



C1 Morgan Plus 8

Limited Edition

Owner's handbook

 Christopher
Ward

Time on your side...

Your Christopher Ward watch has been designed and engineered by highly talented craftspeople to ensure not only accurate and precise timekeeping but also to bring a real pride of ownership that only luxury items of the highest quality can ever hope to deliver.

You have made an investment, a good one, and the aim of this handbook is to help you make the most of that investment during what I hope will be a lifetime of ownership.



Christopher Ward

Contents

| | |
|--|-----|
| C1 Morgan Plus 8 Limited Edition | 2-3 |
| Technical information | 4-5 |
| How to operate your C1 Morgan Plus 8 Limited Edition | 6-9 |
| Our watch care programme | 11 |
| Keeping in touch | 12 |

C1 Morgan Plus 8 Limited Edition

First of all, congratulations on becoming the owner of your Morgan Plus 8 50th Anniversary Edition car.

Supplied with it is this limited edition watch, designed in Britain and built with the utmost care in Switzerland. Between a section of 'MMC 11', the Plus 8's 1968 prototype, visible in its backplate, and our in-house movement, Calibre SH21, you are the owner of a watch whose provenance is already assured. And that is only one part of its story...

When our automotive partners, the Morgan Motor Company, announced that they would be producing fifty Plus 8s to celebrate a half century of their famous roadster, minds started to come together between our respective headquarters in Maidenhead and Malvern over how to mark the occasion.

Fifty watches would be made; one to be supplied with each car. The Plus 8's 50th anniversary no doubt deserved a special approach: what if we could create a watch that wasn't merely inspired by a car, but also had a hand in influencing the design of these fifty Plus 8s too?

The result – devised between CW's Head of Product Adrian Buchmann and Jon Wells, Morgan's Head of Design – is that the C1 Morgan Plus 8 Chronometer's dial is based upon the Plus 8's dashboard, and vice versa. It's a truly innovative approach that ensures a singular vision between watch and car, in turn making you, the owner of a 50th anniversary Plus 8, the custodian of 50 years of Plus 8 history.



C1 Morgan Plus 8 Limited Edition

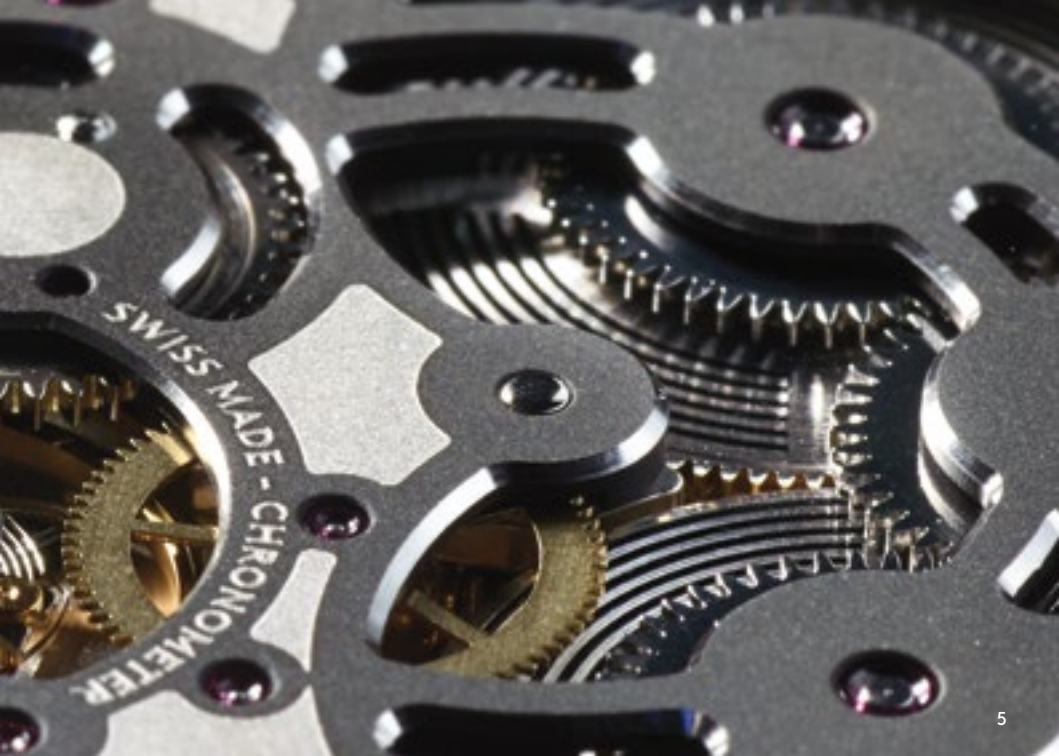
Features

- Swiss made in-house chronometer
- 31 jewel Calibre SH21 hand-wound movement with 120 hour power reserve
- Bespoke black PVD movement bridge with polished chamfers
- Aluminium Morgan disk with lacquered commemorative inscription
- 40.5mm brushed and polished steel case
- Push-down crown with raised and engraved Morgan wings motif
- Anti-reflective domed sapphire crystal
- Matte black textured dial
- Wide bevelled power reserve indicator at 9 o'clock with yellow indicator needle
- Small second sub dial at 6 o'clock with yellow second hand

- Multifaceted polished hour and minute hands filled with SLN T-C1 lume paint
- Screw-in transparent case back with engraved serial number
- Perforated leather strap with dress buckle and yellow interior

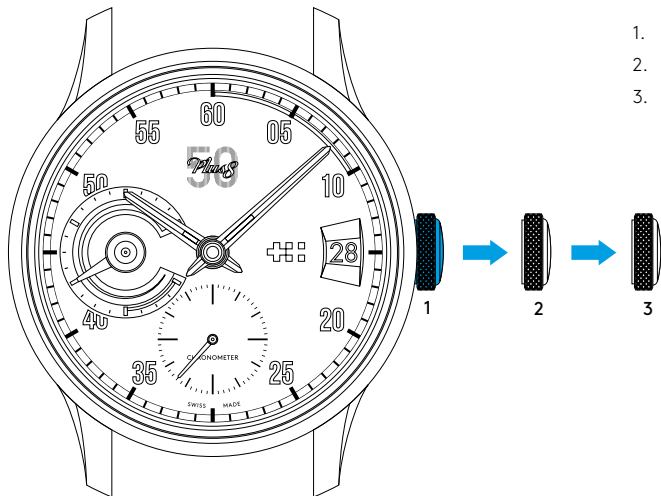
Technical

| | |
|--------------------------|--|
| Diameter: | 40.5mm |
| Height: | 12.1mm |
| Weight: | 62g |
| Calibre: | SH21 hand-wound chronometer with power reserve and small second complication |
| Case: | 316L stainless steel |
| Water Resistance: | 3 ATM (30 metres) |
| Vibrations: | 28,800 per hour (4Hz) |
| Timing tolerance: | -4/+6 secs per day |
| Lug to lug: | 48.55mm |
| Strap: | 20mm |



SWISS MADE - CHRONOMETER

Setting the time/date

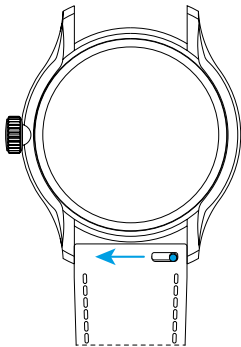


1. Crown position
2. Date setting
3. Time setting

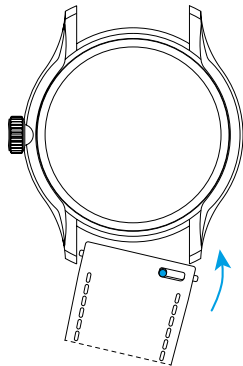
- Position 1 is for winding in power. Wind in a clockwise direction to re-power the watch. Your C1 Morgan Plus 8 Chronometer has a maximum power reserve of 120 hours when fully wound.
- For rapid date correction pull gently into position 2 and turn in an anti-clockwise direction.
- For setting the time pull gently into position 3 and turn clockwise to advance the time. For precise time setting it is recommended to pass beyond the desired minute and to set the hand backwards.
- Push the crown back to position 1. The crown should sit flush to the case in order to maintain water resistance.

PLEASE NOTE: Date correction should not be carried out between 20.00 hr and 02.00 hr as the watch gearing will already be aligning itself to change the date. The crown should always be pushed in after adjustment, and it is best to do so from position 3 to avoid advancing beyond the desired date. Take care not to overwind the crown past the point of resistance as it will damage the movement.

Using the quick-release pins on your strap



1. Locate the quick-release pin on your strap.
Pull the pin to the side to detach your strap.



2. To reattach your strap, align the pins to the lug holes and click the strap into position.
Repeat for the other side.

Water resistance

Although your watch has been through vigorous static pressure testing, it is worth remembering that there are many variables that can affect the water resistance of your watch.

For instance, arm movements during swimming and the sudden impact of diving and water sports will drastically increase the pressure the watch is under. Wearing your watch in the bath, shower, or sauna can also have an effect as a rapid increase in temperature can cause seals to expand and in extreme cases, malfunction or create condensation.

For these reasons, the water resistance rating of your watch (as shown) should only ever be considered a guideline and we strongly recommend they are always adhered to.



1 ATM (10 metres)

Safe to wear your watch while washing your hands with tap water.



3 ATM (30 metres)

Washing your car and/or general hose pipe usage.



5 ATM (50 metres)

Water resistant to most household shower units.



15 ATM (150 metres)

Safe to use while snorkelling in open water.



30 ATM (300 metres)

Ideal for experienced divers and those practising scuba-diving.



60 ATM (600 metres)

Professional divers, experiencing prolonged exposure underwater.



100 ATM (1000 metres)

Professional deep sea diving.



Our watch care programme

Your watch is constructed from the finest components and materials available including one of Switzerland's finest mechanical movements. As with all watches of this quality, with the right care and attention, your new Christopher Ward watch has the potential to become an heirloom piece giving further joy to future generations. It's for this reason we have created our industry leading approach to after-sales care, starting with our famous 60|60 Guarantee which remains the most comprehensive guarantee in the world of watchmaking.

Visit our website for more details about our 60|60 Guarantee and Service and Repair Programme.

60|60 Guarantee

1. 60 Day free returns

Our success depends on you being completely happy with your new Christopher Ward watch. You have up to 60 days to return your watch, absolutely free of charge, and receive a replacement or full refund by return – so long as it has not been worn and is returned in perfect condition with all its original packaging and paperwork.

2. 60 Month movement guarantee

Your watch, at its heart, has a top quality precision engineered Swiss movement – so it's very unlikely to give you problems with the minimum amount of care and attention, including a regular service. We recommend you return your watch to us every 3/4 years for a service, so our expert technicians can keep your fine timepiece in peak condition.

Servicing and repairs...the Christopher Ward way...

Our innovative approach to servicing and repairing your Christopher Ward watch means that having your watch serviced or repaired doesn't mean months of waiting followed by an exorbitant bill – which is more or less the experience guaranteed by every other luxury watch brand. We have developed an easy, quick and affordable expert service and repairs programme that doesn't cost the earth and has your watch back where it belongs – on your wrist – in double-quick time.

Keeping in touch with Christopher Ward

From small beginnings just a few short years ago (our first workshop was actually a refurbished chicken shed!), Christopher Ward has won a worldwide following for his eponymous watch brand and can justifiably claim to manufacture the most affordable luxury watches in the world.

For many, the philosophy behind the brand, of trying to put luxury watches within the reach of everyone, is as attractive as the watches themselves, as is the very open approach of the business which means that Chris and the team spend a lot of time communicating personally with our customers – many of whom have become friends.

As the owner of a Christopher Ward watch, if ever you need to get hold of us we are at your service. We have listed some useful contact details on the back cover.

There is also always something new going on at our website at **www.christopherward.co.uk** and, if you haven't already discovered the independent forum dedicated to our brand at **www.christopherwardforum.com** we would recommend a visit. Informative and fun, it's a great place to hear the unexpurgated view of Christopher Ward.

**Head Office**

1 Park Street, Maidenhead,
Berkshire SL6 1SL
United Kingdom

Customer Services

UK: +44 (0)1628 763040
USA: +44 (0)1.877.226.8224
customerservices@christopherward.co.uk
technical@christopherward.co.uk

christopherward.co.uk