

C65 Sandhurst Series 1

Owner's Handbook



Time on your side

Your Christopher Ward watch has been designed in Britain and engineered in Switzerland by highly talented craftspeople. This ensures not only accurate and precise timekeeping, but also brings a real pride of ownership that only watches of the highest quality standards can hope to deliver.

You have made an investment, a good one, and the aim of this manual is to help you make the most of that investment in what we hope will be a lifetime of ownership.

Chris, Mike and Peter
(Co-founders)

2



C65 Sandhurst Series 1

As a brand licensed by the UK Ministry of Defence to produce watches bearing official insignia, Christopher Ward is proud to present the C65 Sandhurst as its salute to the British Army.

Named after the acclaimed Royal Military Academy Sandhurst situated in Berkshire, the C65 Sandhurst also marks another milestone for Christopher Ward: following repeated customer requests, it marks our first foray into the field watch genre. Taking some influence from the Smiths W10, a rough-and-ready model issued to the British Army in 1967, its combination of blackened dial, white TC-1 Super-LumiNova® Arabic numerals and Old Radium detailing reinforces an absolute commitment to legibility.

Yet there are some important differences between the C65 Sandhurst and its Smiths inspiration. Taking pride of place upon the backplate, the British Army's Heraldic badge has been intricately embossed, its lion, crown and crossed swords deep-stamped with polished surfaces. In comparison to the 35mm original, the Sandhurst measures in at 38mm – still petite, but a recognition of today's preference towards larger sizes.

Not only is the C65 Sandhurst an officially licensed tribute to the British Army, it doubles as a reminder of the continuum of British watch design throughout the ages. Not just for serving personnel, it's a vintage-themed watch that all can enjoy.

Features

- Swiss made
- 26 jewel self-winding mechanical chronometer
- 38 hour power reserve
- Christopher Ward 'Colimaçoné' finish on movement
- Central hacking seconds
- Anti-shock system
- Brushed and polished marine-grade stainless steel case
- Push-in crown stamped with red aluminium ring and stamped twin flag motif
- High Definition British Army Heraldic badge screw-down backplate
- "Glass box" sapphire crystal
- Matte finish dial
- Christopher Ward logo at 12 o'clock
- Old Radium Super-LumiNova®-filled indexes and baton-shaped hands
- T-C1 Super-LumiNova®-printed Arabic numerals
- Printed outer minute track
- White seconds hand with red tip
- Unique engraved serial number
- Luxurious presentation case and owner's handbook

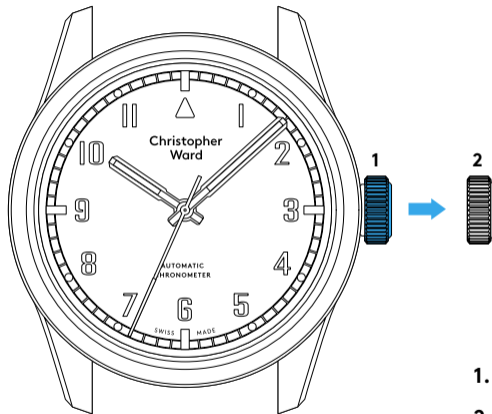
Technical Information

Calibre	Sellita SW200 COSC
Case	316L stainless steel
Diameter	38mm
Height	11.6mm
Lug to lug	45.3mm
Weight	60g
Water resistance	15 ATM (150 metres)
Vibrations	28,800 per hour (4 Hz)
Timing tolerance	-4/+6 seconds per day
Strap width:	20mm

Setting the time and date

The crown should sit flush to the case (position **1**) in order to maintain water resistance.

- To re-power the watch after a period of non-use, simply wind the crown in a clockwise direction. Your C65 Sandhurst Series 1 has a maximum power reserve of 38 hours when fully wound. Normal wearing will allow the rotor to start re-powering the watch over time after putting on your wrist.
- Pull gently into position **2**. This position is used for handsetting and stopping of the second hand. For precise time setting it is recommended to pass beyond the desired minute and to set the hand backwards.



1. Manual winding
2. Time setting

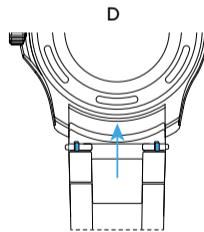
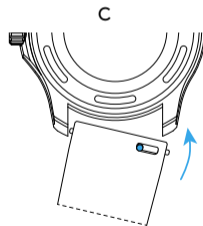
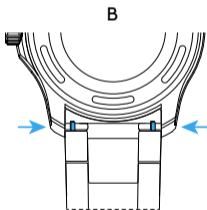
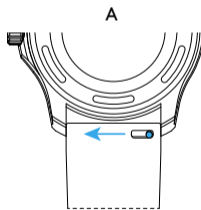
Straps and bracelets

As you would expect, we place as much emphasis on the quality of our straps and bracelets as we do our watches. We only use the finest materials in our straps, with quick-release pins also included for your convenience.

The following guidelines explain how easy it is to use, adjust and replace your Christopher Ward strap or bracelet.

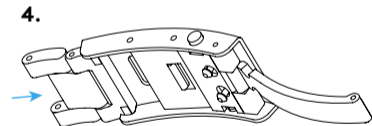
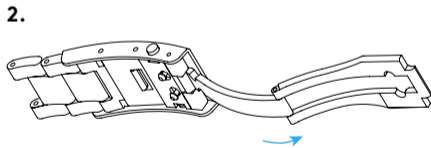
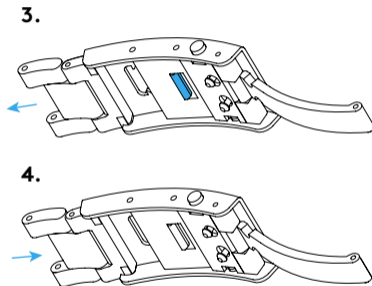
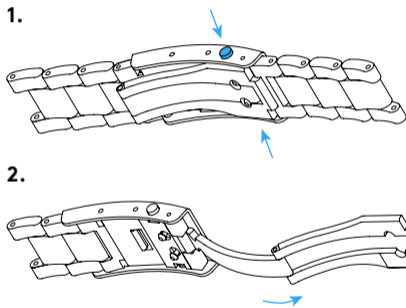
Using the quick-release pins on your strap/bracelet

1. Locate the quick-release pin (or pins) on your strap (A) or bracelet (B). Pull the pin(s) inwards to detach.
2. To reattach your strap (C) or bracelet (D), pull the pin(s) inwards, and align the spring bars so that they click securely into the lug holes on each side.



How to use the micro adjustment on your bracelet

1. Press buttons to release
2. Pull open the clasp
3. There are five micro adjustment positions, which allows for a maximum extension of 8.4mm. To extend, pull the lever to unlock and simultaneously pull on the bracelet into the desired position.
4. To shorten, simply push the bracelet back into the clasp.



Water resistance

Although your watch has been through vigorous static pressure testing, it is worth remembering that there are many variables that can affect the water resistance of your watch. For instance, arm movements during swimming and the sudden impact of diving and water sports will drastically increase the pressure the watch is under.

Wearing your watch in the bath, shower, or sauna can also have an effect as a rapid increase in temperature can cause seals to expand and in extreme cases, malfunction or create condensation.

For these reasons, the water resistance rating of your watch (as shown) should only ever be considered a guideline and we strongly recommend they are always adhered to.



1 ATM (10 metres)

Safe to wear your watch while washing your hands with tap water



15 ATM (150 metres)

Safe to use while snorkelling in open water



100 ATM (1000 metres)

Professional deep sea diving



3 ATM (30 metres)

Washing your car and/or general hose pipe usage



30 ATM (300 metres)

Ideal for experienced divers and those practising scuba-diving



5 ATM (50 metres)

Water resistant to most household shower units



60 ATM (600 metres)

Professional divers, experiencing prolonged exposure underwater

60|60 Guarantee

Your watch is constructed from the finest components and materials available including one of Switzerland's finest mechanical movements. As with all watches of this quality, with the right care and attention, your new Christopher Ward watch has the potential to become an heirloom piece giving further joy to future generations.

It's for this reason we have created our industry leading approach to after-sales care, starting with our famous 60|60 Guarantee which remains the most comprehensive guarantee in the world of watchmaking.

60 Day Free Returns

Our success depends on you being completely happy with your new Christopher Ward watch. You have up to 60 days from despatch to return your watch, with free shipping, and receive a replacement or full refund, for which the watch must be in perfect, unworn condition and accompanied by all its original packaging and paperwork.

60 Month Movement Guarantee

Your watch has a top-quality precision engineered Swiss movement – but if it develops a movement fault within 5 years, and has been serviced by us at the recommended interval (within a maximum of 4 years from date of despatch), we will repair it for free under warranty. Not all mechanical problems or quartz battery replacements are

considered movement faults and your watch will need to be sent to us for diagnosis and service history checks, before processing a repair under warranty.

Servicing and Repairs - the Christopher Ward way...

Our innovative approach to service and repair means that having your watch attended to doesn't mean months of waiting followed by an exorbitant bill. We have developed a quick, easy and affordable expert service and repairs process that doesn't cost the earth and has the watch back where it belongs – on your wrist – in reasonable time.

We recommend you service your watch at intervals of 3-4 years to keep it in peak condition and to maintain your **60 month guarantee**. If your watch develops an issue within 60 months of despatch, we will first check its service history before progressing a repair. If you have not had your watch serviced at the recommended interval, we will not cover the cost of the repair under warranty, and will recommend a maintenance service in addition to any repair work due.

christopherward.co.uk/cservices/60-60-guarantee

Keeping in touch with Christopher Ward

From small beginnings just 15 years ago (our first workshop was actually a refurbished chicken shed!), Christopher Ward has won a worldwide following and can justifiably claim to manufacture the most affordable luxury watches in the world. For many, the philosophy behind the brand, of trying to put luxury watches within the reach of everyone, is as smart as the watches themselves. The very open approach of the business sees Chris, Mike and Peter, as well as the rest of the team, spending lots of time communicating

personally with customers – listening to feedback which helps us continually improve as we grow. As the owner of a Christopher Ward watch, if you ever need to get hold of us we are at your service. There is always something new on our website, across our social media communities and on the Christopher Ward Forum – informative and fun, these are the best places to join the conversation about the latest new releases, news and offers in the world of Christopher Ward.

Head Office

1 Park Street, Maidenhead,
Berkshire SL6 1SL
United Kingdom

Customer Services

UK: +44 (0)1628 763040

USA: 1.877.226.8224

customerservices@christopherward.co.uk

technical@christopherward.co.uk

christopherward.co.uk

