

C65 Trident Bronze SH21

Limited Edition

Owner's handbook



Christopher
Ward

Time on your side...

Your Christopher Ward watch has been designed and engineered by highly talented craftspeople to ensure not only accurate and precise timekeeping, but also to bring a real pride of ownership that only luxury items of the highest quality can ever hope to deliver.

You have made an investment, a good one, and the aim of this handbook is to help you make the most of that investment during what I hope will be a lifetime of ownership.



Christopher Ward

Contents

C65 Trident Bronze SH21 Limited Edition	2-3
Technical information	4-5
How to operate your C65 Trident Bronze SH21	6-10
Our watch care programme	11
Keeping in touch	12

C65 Trident Bronze SH21 Limited Edition

It's not too often you have the opportunity to add the rugged beauty of bronze to a watch fashioned after the iconic divers found throughout the 1960s.

But to mark such a special pairing, the CW team had a thought: if we were going to go all out, why shouldn't our in-house movement Calibre SH21 be included too? The result is the C65 Trident Bronze SH21 Limited Edition, a watch that links a material rooted in maritime history with a notably retro aesthetic (look no further than its distinctive glassbox sapphire crystal). Yet the C65 is a watch of juxtaposition, with its historical influences implemented in a way only made possible by the modern day.

Inside, for example, a hand-wound version of Calibre SH21 provides 120 hours of chronometer-certified timekeeping through its technically marvelous twin-barrel construction, while a small second complication is a nod to a more traditional era of horology. (An interesting note: the last time a

British brand made a commercially viable in-house movement, like SH21 is, was before the 1960s period the C65 draws influence from.)

Elsewhere, the C65's case is made from a premium Japanese bronze alloy – more specifically, CuSn6, a material known for its strength and corrosion resistance. With every interaction you have with your watch resulting in a case that patinates in an entirely unique fashion, the potential here is enormous. Think of it another way: although only 150 of these special watches have been made, yours will become one of a kind.





Technical information

Features

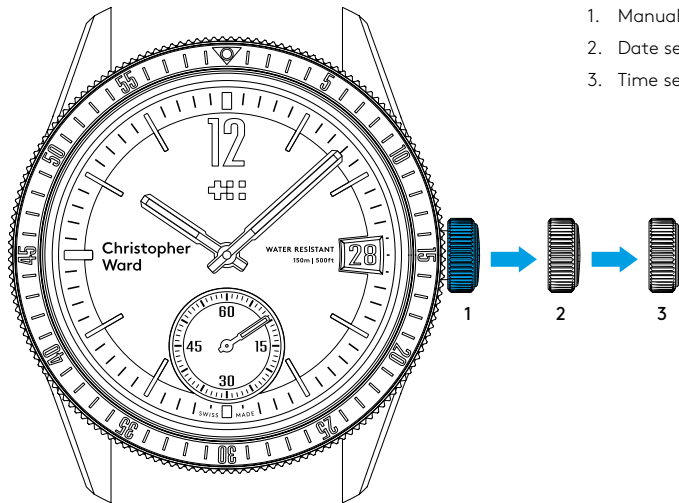
- Limited edition of 150 pieces
- Swiss made
- 27 jewel hand-wound movement
- 120 hour power reserve
- Hour, minute, small second, date
- Anti-shock system
- Bronze C5191 (CuSn6) case with stainless steel high Definition "Trident" motif screw-down backplate
- Push-in crown stamped with twin flag motif
- Unidirectional bronze bezel with aluminium insert
- "Glass box" sapphire crystal
- Matte finish dial with Azzuré subdial finish
- Twin flags debossed at 12 o'clock
- Old Radium SuperLumiNova® indexes and hands
- Unique engraved serial number

Technical

Diameter:	41mm
Height:	12.5mm
Weight:	73g
Calibre:	SH21 hand-wound chronometer (COSC) with small second and date
Case:	Bronze C5191 (CuSn6) with 316L stainless steel backplate
Water Resistance:	15 ATM (150 metres)
Vibrations:	28,800 per hour (4 Hz)
Timing tolerance:	-4/+6 seconds per day
Lug to lug:	47.1mm
Strap:	22mm



Setting the time/date



1. Manual winding
2. Date setting
3. Time setting

The crown should sit flush to the case (position 1) in order to maintain water resistance.

- To re-power the watch after a period of non-use, simply wind the crown in a clockwise direction until you begin to feel a resistance. Your C65 Trident Bronze SH21 has a maximum power reserve of 120 hours when fully wound.
- For rapid date correction pull gently into position 2 and turn in an anti-clockwise direction.
- For setting the time pull gently into position 3 and turn clockwise to advance the time. For precise time setting it is recommended to pass beyond the desired minute and to set the hand backwards.
- Push the crown back to position 1. The crown should sit flush to the case in order to maintain water resistance.

PLEASE NOTE: Date correction should not be carried out between 20.00 hr and 02.00 hr as the watch gearing will already be aligning itself to change the date. The crown should always be pushed in after adjustment, and it is best to do so from position 3 to avoid advancing beyond the desired date.

As this watch uses a manually wound mechanical movement, take care not to overwind the crown past the point of resistance as it will damage the movement.

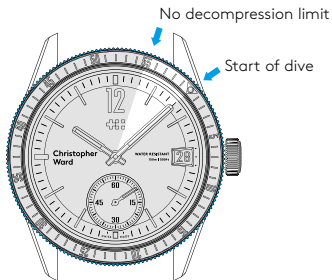
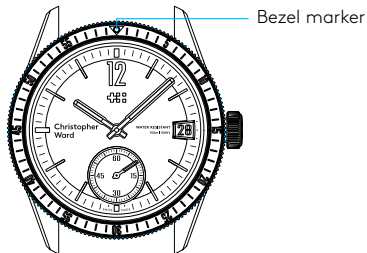
The bezel

If using the bezel for a dive, and let's say the recognised maximum "no-stop time" is 55 minutes, then in this example (shown right) the time at the surface immediately before the dive is 10.08am.

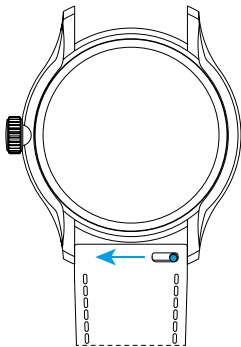
However the bezel marker is at the 12.00 hr position.

- Move the bezel marker anti-clockwise so that it aligns with the 8 minute position.
- You can now read that the 55 minute no decompression limit will occur at 3 minutes past the next hour.

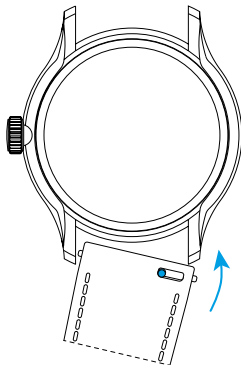
PLEASE NOTE: It is always useful and best practice to make a note on a dive slate before entering the water and to carry a set of dive tables should the dive plan change during the course of a dive. A safety stop for 3 to 5 minutes at 15ft is recommended at the end of all dives. A safety stop for 3 minutes at 15ft is required any time you come within 3 pressure groups of a no decompression limit, and for any dive to a depth of 100ft or deeper.



Using the quick-release pins on your strap



1. Locate the quick-release pin on your strap.
Pull the pin to the side to detach your strap.



2. To reattach your strap, align the pins to the lug holes and click the strap into position.
Repeat for the other side.

Water resistance

Although your watch has been through vigorous static pressure testing, it is worth remembering that there are many variables that can affect the water resistance of your watch.

For instance, arm movements during swimming and the sudden impact of diving and water sports will drastically increase the pressure the watch is under. Wearing your watch in the bath, shower, or sauna can also have an effect as a rapid increase in temperature can cause seals to expand and in extreme cases, malfunction or create condensation.

For these reasons, the water resistance rating of your watch (as shown) should only ever be considered a guideline and we strongly recommend they are always adhered to.



1 ATM (10 metres)

Safe to wear your watch while washing your hands with tap water.



3 ATM (30 metres)

Washing your car and/or general hose pipe usage.



5 ATM (50 metres)

Water resistant to most household shower units.



15 ATM (150 metres)

Safe to use while snorkelling in open water.



30 ATM (300 metres)

Ideal for experienced divers and those practising scuba-diving.



60 ATM (600 metres)

Professional divers, experiencing prolonged exposure underwater.



100 ATM (1000 metres)

Professional deep sea diving.

Our watch care programme

Your watch is constructed from the finest components and materials available including one of Switzerland's finest mechanical movements. As with all watches of this quality, with the right care and attention, your new Christopher Ward watch has the potential to become an heirloom piece giving further joy to future generations. It's for this reason we have created our industry leading approach to after-sales care, starting with our famous 60|60 Guarantee which remains the most comprehensive guarantee in the world of watchmaking.

Visit our website for more details about our 60|60 Guarantee and Service and Repair Programme.

60|60 Guarantee

1. 60 day free returns

Our success depends on you being completely happy with your new Christopher Ward watch. You have up to 60 days to return your watch, absolutely free of charge, and receive a replacement or full refund by return – so long as it has not been worn and is returned in perfect condition.

2. 60 month movement guarantee

Your watch, at its heart, has a top quality precision engineered Swiss movement – so it's very unlikely to give you problems with the minimum amount of care and attention, including a regular service. We recommend you return your watch to us every 3/4 years for a service, so our expert technicians can keep your fine timepiece in peak condition.

Servicing and repairs, the Christopher Ward way...

Our innovative approach to servicing and repairing your Christopher Ward watch means that having your watch serviced or repaired doesn't mean many months of waiting followed by an exorbitant bill – which is more or less the experience guaranteed by every other luxury watch brand. We have developed an easy, quick and affordable expert service and repairs programme that doesn't cost the earth and has your watch back where it belongs – on your wrist – in double-quick time.

Keeping in touch with Christopher Ward

From small beginnings just a few short years ago (our first workshop was actually a refurbished chicken shed!), Christopher Ward has won a worldwide following for his eponymous watch brand and can justifiably claim to manufacture the most affordable luxury watches in the world.

For many, the philosophy behind the brand, of trying to put luxury watches within the reach of everyone, is as attractive as the watches themselves, as is the very open approach of the business which means that Chris and the team spend a lot of time communicating personally with our customers – many of whom have become friends.

As the owner of a Christopher Ward watch, if ever you need to get hold of us we are at your service. We have listed some useful contact details on the back cover.

There is also always something new going on at our website at **www.christopherward.co.uk** and, if you haven't already discovered the independent forum dedicated to our brand at **www.christopherwardforum.com** we would recommend a visit. Informative and fun, it's a great place to hear the unexpurgated view of Christopher Ward.



Head Office

1 Park Street, Maidenhead,
Berkshire SL6 1SL
United Kingdom

Customer Services

UK: +44 (0)1628 763040
USA: 1.877.226.8224
customerservices@christopherward.co.uk
technical@christopherward.co.uk

christopherward.co.uk