

C8 Flyer Quartz

Owner's handbook

**Christopher
Ward**

Time on your side...

Your Christopher Ward watch has been designed and engineered by highly talented craftspeople to ensure not only accurate and precise timekeeping but also to bring a real pride of ownership that only items of the highest quality can ever hope to deliver.

You have made an investment, a good one, and the aim of this handbook is to help you make the most of that investment during what I hope will be a lifetime of ownership.



Christopher Ward

Contents

C8 Flyer Quartz	2-3
Technical information	4-5
How to operate your C8 Flyer Quartz	6-10
Our watch care programme	11
Keeping in touch	12

C8 Flyer Quartz

A welcome addition to our C8 range, the Flyer Quartz adds a welcome element of choice to those who prefer their aviation watch with the guaranteed timekeeping of quartz. In a way, the C8 is a rather appropriate analogy for the philosophy of Christopher Ward as a brand: British and Swiss elements coalesce into a seamless whole, whilst also celebrating the strengths of each.

The best of Swiss engineering is present in the C8 Flyer Quartz. Inside, a gold-plated Ronda 715 has a tolerance of -10/+20 seconds per month, while its potential 60 month battery life can be extended further. Keeping the crown pulled out when not being worn reduces consumption by 70%.

But it is the dial that warrants the closest attention, with depth and texture used to optimum effect. Inspired by the Smiths Mk II clock found inside the Spitfire – an icon of British aeronautics, and used for

night and daytime operations – legibility is a crucial aspect of the Quartz's design. Raised numerals at 6 and 12 o'clock are complemented by cutaway batons to reveal a SuperLuminova®-covered sandwich dial beneath, while an anti-reflective crystal ensures legibility in all conditions.

Sharing an aesthetic with the remainder of our aviation collection, the Quartz is an aviation watch for those who see beyond the B-Uhr designs that dominate the market. There may be a Swiss movement inside, but this is a watch with a distinctly British heart.





Technical information

Features

- Swiss made
- 5 jewel quartz movement
- Power saving mechanism
- Steel or DLC (diamond-like carbon) case
- Multi-layered dial with lume-dipped hands
- Anti-reflective flat sapphire crystal
- SuperLuminova® numerals and indices
- Screw-down backplate deep-stamped with Farnborough wind tunnel design
- Push-down crown with deep-stamped 'Flyer' motif
- Whip stitch Tiber leather strap with CW motif clasp

Technical

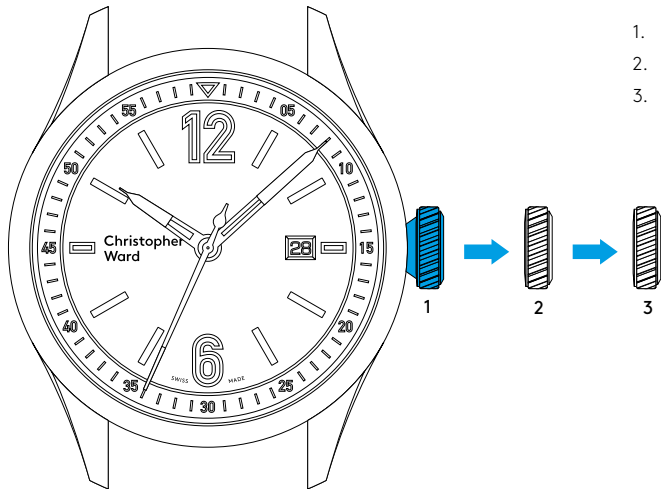
Diameter:	44mm
Height:	11.25mm
Weight:	72g
Calibre:	Ronda 715.2
Case:	316L stainless steel
Water Resistance:	5 ATM (50 metres)
Vibrations:	28,800 per hour (4Hz)
Timing tolerance:	-10/+20 secs per month
Lug to lug:	53.2mm
Strap:	22mm



Christopher
Ward

60
SWISS

Setting the time/date



1. Crown position
2. Date setting
3. Time setting

The crown should sit flush to the case (position 1) in order to maintain water resistance.

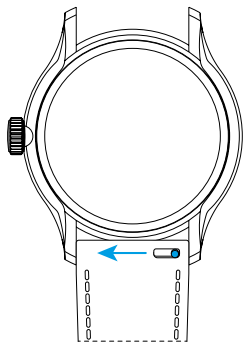
- For rapid date correction pull gently into position 2 and turn in a clockwise direction.
- For setting the time pull gently into position 3 and turn anti-clockwise to advance the time. For precise time setting it is recommended to pass beyond the desired minute and to set the hand backwards.
- Push the crown back to position 1.

Power saving mode

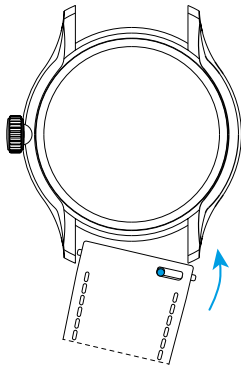
- Pull the crown gently into position 3 to stop the watch and activate the power saving mechanism which will reduce battery consumption by 70%. If the watch is going to remain in the power saving mode for some time please ensure it is in a safe moisture free environment.

PLEASE NOTE: Date correction should not be carried out between 20.00 hr and 02.00 hr as the watch gearing will already be aligning itself to change the date. The crown should always be pushed in after adjustment, and it is best to do so from position 3 to avoid advancing beyond the desired date.

Using the quick-release pins on your strap



1. Locate the quick-release pin on your strap.
Pull the pin to the side to detach your strap.



2. To reattach your strap, align the pins to the lug holes and click the strap into position.
Repeat for the other side.



Water resistance

Although your watch has been through vigorous static pressure testing, it is worth remembering that there are many variables that can affect the water resistance of your watch.

For instance, arm movements during swimming and the sudden impact of diving and water sports will drastically increase the pressure the watch is under. Wearing your watch in the bath, shower, or sauna can also have an effect as a rapid increase in temperature can cause seals to expand and in extreme cases, malfunction or create condensation.

For these reasons, the water resistance rating of your watch (as shown) should only ever be considered a guideline and we strongly recommend they are always adhered to.



1 ATM (10 metres)

Safe to wear your watch while washing your hands with tap water.



3 ATM (30 metres)

Washing your car and/or general hose pipe usage.



5 ATM (50 metres)

Water resistant to most household shower units.



15 ATM (150 metres)

Safe to use while snorkelling in open water.



30 ATM (300 metres)

Ideal for experienced divers and those practising scuba-diving.



60 ATM (600 metres)

Professional divers, experiencing prolonged exposure underwater.



100 ATM (1000 metres)

Professional deep sea diving.

Our watch care programme

Your watch is constructed from the finest components and materials available including one of Switzerland's finest mechanical movements. As with all watches of this quality, with the right care and attention, your new Christopher Ward watch has the potential to become an heirloom piece giving further joy to future generations. It's for this reason we have created our industry leading approach to after-sales care, starting with our famous 60|60 Guarantee which remains the most comprehensive guarantee in the world of watchmaking.

Visit our website for more details about our 60|60 Guarantee and Service and Repair Programme.

60|60 Guarantee

1. 60 Day free returns

Our success depends on you being completely happy with your new Christopher Ward watch. You have up to 60 days to return your watch, absolutely free of charge, and receive a replacement or full refund by return – so long as it has not been worn and is returned in perfect condition.

2. 60 Month movement guarantee

Your watch, at its heart, has a top quality precision engineered Swiss movement – so it's very unlikely to give you problems with the minimum amount of care and attention, including a regular service. We recommend you return your watch to us every 3/4 years for a service, so our expert technicians can keep your fine timepiece in peak condition.

Servicing and repairs...the Christopher Ward way...

Our innovative approach to servicing and repairing your Christopher Ward watch means that having your watch serviced or repaired doesn't mean months of waiting followed by an exorbitant bill – which is more or less the experience guaranteed by every other luxury watch brand. We have developed an easy, quick and affordable expert service and repairs programme that doesn't cost the earth and has your watch back where it belongs – on your wrist – in double-quick time.

Keeping in touch with Christopher Ward

From small beginnings just a few short years ago (our first workshop was actually a refurbished chicken shed!), Christopher Ward has won a worldwide following for his eponymous watch brand and can justifiably claim to manufacture the most affordable luxury watches in the world.

For many, the philosophy behind the brand, of trying to put luxury watches within the reach of everyone, is as attractive as the watches themselves, as is the very open approach of the business which means that Chris and the team spend a lot of time communicating personally with our customers – many of whom have become friends.

As the owner of a Christopher Ward watch, if ever you need to get hold of us we are at your service. We have listed some useful contact details on the back cover.

There is also always something new going on at our website at **www.christopherward.co.uk** and, if you haven't already discovered the independent forum dedicated to our brand at **www.christopherwardforum.com** we would recommend a visit. Informative and fun, it's a great place to hear the unexpurgated view of Christopher Ward.



Head Office

1 Park Street, Maidenhead,
Berkshire SL6 1SL
United Kingdom

Customer Services

UK: +44 (0)1628 763040
USA: +44 (0)1.877.226.8224
customerservices@christopherward.co.uk
technical@christopherward.co.uk

christopherward.co.uk