



C63 Celest

Owner's Handbook

 Christopher
Ward

Time on your side

Your Christopher Ward watch has been designed in England and built by hand in Switzerland by highly talented craftspeople. This ensures not only accurate and precise timekeeping, but also brings a real pride of ownership that only watches of the highest quality standards can hope to deliver.

You have made an investment, a good one, and the aim of this manual is to help you make the most of that investment in what we hope will be a lifetime of ownership.

Mike France
CEO & co-founder

The Sealand collection

There are few things more human than the urge to explore.

To travel, search or discover – just for the joy of it.

And when you do explore, you need a timepiece that's not only accurate but rugged enough to handle whatever comes its way.

This is the thinking behind the Sealand collection. And the reason your new watch looks and functions the way it does.

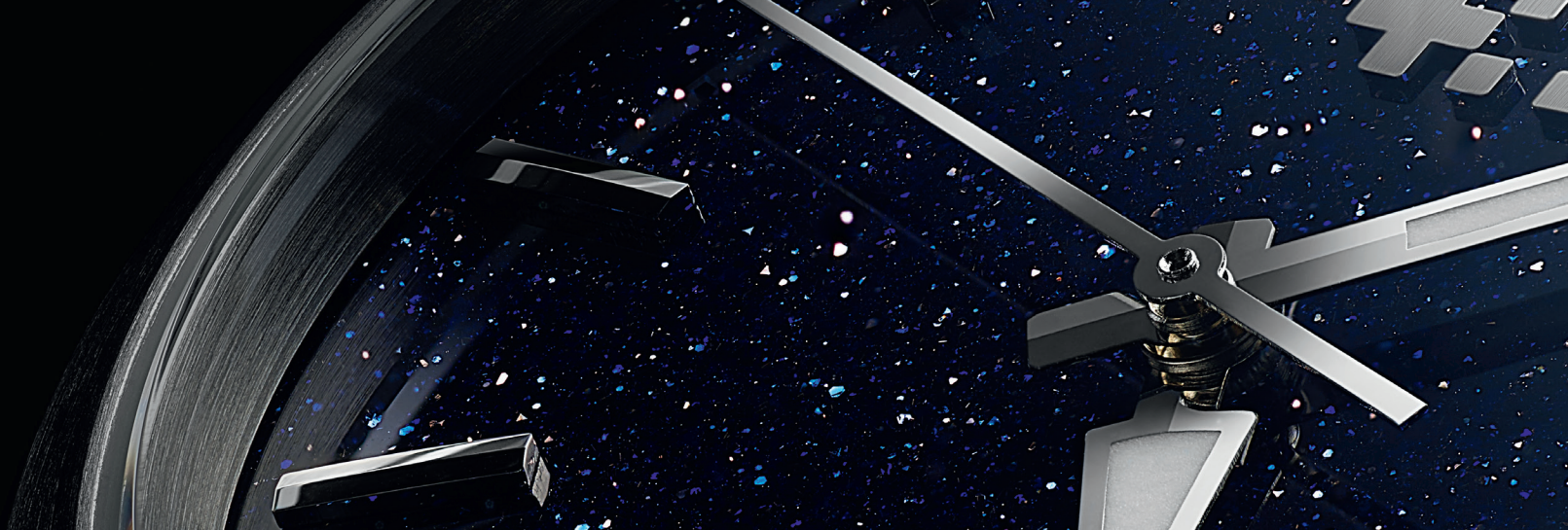
Whether you've gone for the C63 Sealand Automatic (the 'purest' Sealand), the internationally-minded C63 Sealand GMT or the titanium C63 Sealand Elite, you're wearing a watch that's inspired by the sports-explorer watches of the mid 20th century.

But Sealanders are also made for the modern world – a world where leisure and work mix, and where adventure and business are often the same. Watches that are tough but finished to such a high specification, they're as at home in a high-end restaurant as they are up the side of a mountain.

Mike France, our CEO, was one of the main driving forces behind the collection. He knew Christopher Ward needed to produce a range of sports watches that sit somewhere between the practicality of a C60 Trident Pro 600 and the retro-sophistication of a C65 Trident Auto.

"These pieces are as tough as a dive watch, but underplay it with more modest, bezel-free lines," he says. "They can be worn anywhere, and as work and home life continue to blend, that's become more relevant than ever."

Now you know the thinking behind your new watch, you have but one task: to strap it on and see where your explorations take you.



C63 Celest

Congratulations on the purchase of your C63 Celest.

A pure expression of Sealander's go-anywhere, do-everything spirit combined with the speckled beauty of aventurine glass, your timepiece is perfect for those who want the practicality of a sports-explorer watch with the nocturnal glamour of a dress piece.

Look at the aventurine dial, and you'll see how mesmerising this Venetian glass is – especially when paired with the handset, indexes and applied 'twin-flags' logo. Of course, as a Sealander, it's also a precision-engineered timing device.

The Sellita SW200-1 automatic movement provides accurate timekeeping in every environment while the dial is easy to read – day or night. And if you like to witness Swiss horology up close, the exhibition caseback gives you the perfect view of the movement's decorated rotor.

As tastes change and we return to more sensibly sized cases, your new watch is both an on-trend accessory – and a tried-and-tested classic timepiece. With a dial you'll never tire of gazing at.

Features

- Swiss made
- Self-winding 26 jewel mechanical movement
- 38-hour power reserve
- Central hacking seconds hand
- Anti-shock system
- Twin-flags engraving over 'Colimaçoné' finish on the rotor
- Elaboré 'Colimaçoné' finish on the movement
- Aventurine glass dial with applied twin-flags logo
- Diamond polished indexes
- Diamond polished hands
- Brushed and polished marine-grade stainless steel case
- Circular brushed and polished fixed steel bezel
- Screwdown display caseback
- Embossed screwdown crown

Technical Information

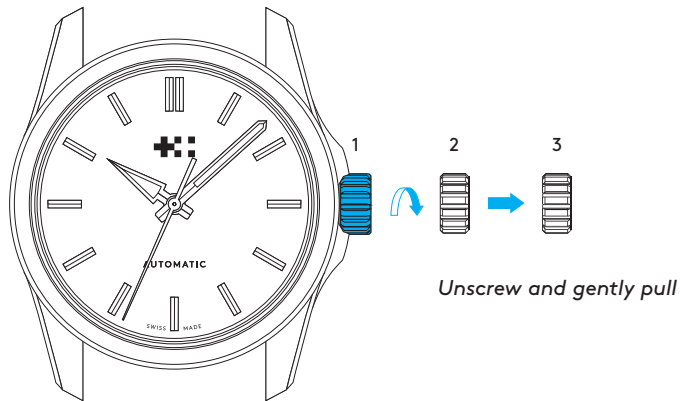
Calibre	Sellita SW200-1
Case	Stainless steel
Diameter	36mm
Height	11.05mm
Lug to lug	42.87mm
Weight	54g
Water resistance	15 ATM (150 metres)
Vibrations	28,800 per hour (4Hz)
Timing tolerance	-20/+20 seconds per day
Strap width	20mm



Setting the time

For a superior water resistance your crown is of the screw-down type. The crown should sit flush to the case (position **1**) in order to maintain water resistance.

- First unscrew the crown anti-clockwise from the case to position **2** for winding in power. Wind in a clockwise direction to re-power the watch. Your C63 Celest has a maximum power reserve of 38 hours when fully wound. Normal wearing will allow the rotor to start re-powering the watch over time after putting on your wrist.
- Pull gently into position **3**. This position is used for handsetting and stopping of the seconds hand. For precise time setting it is recommended to pass beyond the desired minute and to set the hand backwards.



1. Crown screw-down position
2. Manual winding
3. Time setting

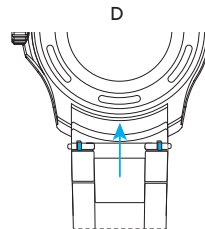
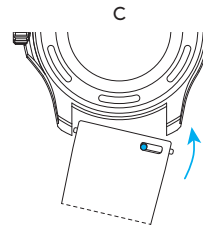
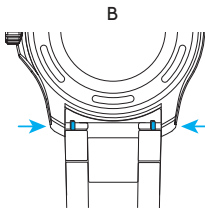
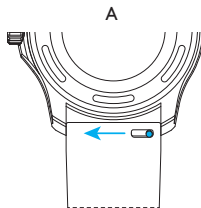
Straps and bracelets

As you would expect, we place as much emphasis on the quality of our straps and bracelets as we do our watches. We only use the finest materials in our straps, with quick-release pins also included for your convenience.

The following guidelines explain how easy it is to use, adjust and replace your Christopher Ward strap or bracelet.

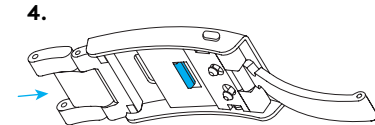
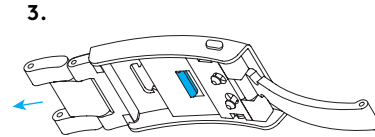
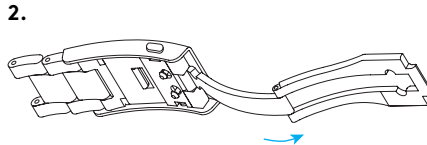
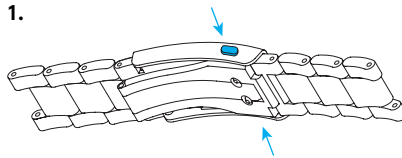
Using the quick-release pins on your strap/bracelet

1. Locate the quick-release pin (or pins) on your strap (A) or bracelet (B). Pull the pin(s) inwards to detach.
2. To reattach your strap (C) or bracelet (D), pull the pin(s) inwards, and align the spring bars so that they click securely into the lug holes on each side.



How to use the micro adjustment on your bracelet

1. Press buttons to release.
2. Pull open the clasp.
3. There are three micro adjustment positions, which allows for a maximum extension of 6mm. To extend, pull the lever to unlock and simultaneously pull on the bracelet into the desired position.
4. To shorten, simply pull the lever to unlock and push the bracelet back into the clasp.



Water resistance

Although your watch has been through vigorous static pressure testing, it is worth remembering that there are many variables that can affect the water resistance of your watch. For instance, arm movements during swimming and the sudden impact of diving and water sports will drastically increase the pressure the watch is under.

Wearing your watch in the bath, shower, or sauna can also have an effect as a rapid increase in temperature can cause seals to expand and in extreme cases, malfunction or create condensation.

For these reasons, the water resistance rating of your watch (as shown) should only ever be considered a guideline and we strongly recommend they are always adhered to.



1 ATM (10 metres)

Safe to wear your watch while washing your hands with tap water



15 ATM (150 metres)

Safe to use while snorkelling in open water



100 ATM (1000 metres)

Professional deep sea diving



3 ATM (30 metres)

Washing your car and/or general hose pipe usage



30 ATM (300 metres)

Ideal for experienced divers and those practising scuba-diving



5 ATM (50 metres)

Water resistant to most household shower units



60 ATM (600 metres)

Professional divers, experiencing prolonged exposure underwater

60|60 Guarantee

Your watch is constructed from the finest components and powered by a Swiss mechanical movement. As with all quality watches, with the right care and attention, your new timepiece has the potential to become an heirloom, giving joy to future generations.

It's for this reason we've created an industry-leading approach to after-sales care, starting with our famous 60|60 Guarantee – the most comprehensive warranty in watchmaking.

60-day free returns

We hope you'll be happy with your watch from the moment it arrives. However, if that's not the case you have 60 days to return it in perfect, unused condition (with all its accompanying paperwork) in order to receive a replacement or full refund.

60-month movement guarantee

Your watch is powered by a precision-engineered Swiss movement. In the rare event that your movement develops a fault within five years we'll repair it for free under warranty. Your watch will need to be sent to us for a full diagnosis before processing a repair under warranty. We will always keep you informed before carrying out any work.

Service and repairs: the Christopher Ward way

Our approach to service and repairs is about uncompromised quality and great value for money. The process, led by our expert technicians, won't cost the earth and will have the watch back on your wrist in reasonable time. We recommend you service your watch every three to four years to keep it in peak condition.

PLEASE NOTE:

The 60|60 Guarantee does not cover accidental damage. Any service or repair by a third-party retailer will void your 60|60 Guarantee. For more details, please visit our website.

Contact us

Keeping in touch with Christopher Ward

From humble beginnings in 2004 (our first workshop was a refurbished chicken shed!) Christopher Ward has won a global following – and can justifiably claim to make the most affordable luxury watches in the world.

For many of our fans, the philosophy of trying to put luxury watches within the reach of everyone, is as smart as the timepieces themselves. This open approach sees co-founders Mike France and

Peter Ellis communicate personally with customers and listen to their feedback. Something that helps us improve our offering to you. As the owner of a Christopher Ward watch, if you ever need to get hold of us we're at your service. And if you'd like to explore the CW world more, you can follow us on social media.



@ChristopherWardLondon



@ChrisWardLondon

Head office

1 Park Street, Maidenhead,
Berkshire SL6 1SL
United Kingdom

Customer support

UK and EU Tel: +44 (0)1628 763040
US Tel: +1 (877) 380 2288
ROW Tel: +1 (877) 380 2288
customerservices@christopherward.co.uk
technical@christopherward.co.uk

christopherward.com

