

**C70** GRAND PRIX CHRONOMETER  
LIMITED EDITION

OWNER'S HANDBOOK

CHR. WARD  
L O N D O N

## TIME ON YOUR SIDE...

Your Christopher Ward watch has been designed and engineered by highly talented craftspeople to ensure not only accurate and precise timekeeping but also to bring a real pride of ownership that only luxury items of the highest quality can ever hope to deliver.

You have made an investment, a good one, and the aim of this handbook is to help you make the most of that investment during what I hope will be a lifetime of ownership.



Christopher Ward

### CONTENTS

THE C70 GRAND PRIX CHRONOMETERS	2-3
- C70 BRITISH GP 1926 CHRONOMETER	4-5
- C70 ITALIAN GP 1921 CHRONOMETER	6-7
- C70 FRENCH GP 1906 CHRONOMETER	8-9
- C70 BELGIAN GP 1925 CHRONOMETER	10-11
TECHNICAL INFORMATION	12-13
OPERATING INSTRUCTIONS	14-29
OUR WATCH CARE PROGRAMME	30-31
GETTING IN TOUCH	32

## THE C70 GRAND PRIX CHRONOMETERS

In 2007, Christopher Ward released a series of chronograph watches celebrating the first Grand Prix races established during the early pioneering years of motorsport when courageous drivers in their temperamental machines put life and limb at risk for glory, fame and, occasionally, riches.

This year we have revisited and updated the collection and are releasing four outstanding designs from the original series, which for the first time will be COSC-certified chronometers.

These 2015 versions emphasise the winning drivers of the inaugural British, French, Italian and Belgium Grand Prix more strongly than the originals, specifically by the inclusion of a recessed plate on the side of the watch case –

a device that has proven hugely successful with the recent C70 D-Type and 3527 GT releases. The plates indicate the driver/s of each race as well as their recorded time.

The back-plate of each watch has also been re-modelled to incorporate under museum-grade crystal, a ceramic flag of each nation alongside the date of the race.

Each watch is limited to an edition of only 500 pieces worldwide.



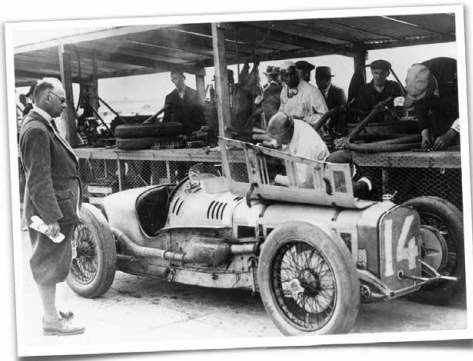
## C70 BRITISH GP 1926 CHRONOMETER



Two Frenchmen, Robert Senechal and Louis Wagner, drove their equally French Delage 155 to victory in the first ever British Grand Prix, no doubt to the chagrin of the British industry which, for years, had been in the shadow of a French automobile industry that was at the time the largest in Europe. That Malcolm Campbell came in second probably rubbed salt into the wound rather than being cause for celebration!

On an overcast day at the famous Brooklands track in Surrey, the Delage was brought home in a time of 4 hours and 56 seconds a time that is etched onto a plate on the case side of this stunning chronometer.

Although the victory was a French one, the British Racing Green colours of this watch, including a ceramic Union Flag beneath museum-grade sapphire crystal on the back of the case, signify the importance of the event (and venue) which was the birth-place of British motorsport and aviation.



The French Delage 155, driven by Senechal and Wagner, at the first ever British Grand Prix, Brooklands 1926.

Available in a Limited Edition of only 500 pieces worldwide, this chronometer is certain to become a keenly sought-after collector's piece.



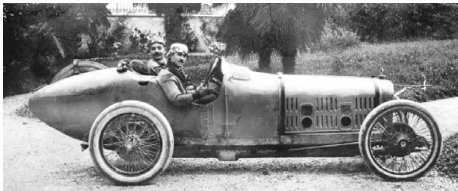
## C70 ITALIAN GP 1921 CHRONOMETER



On 4<sup>th</sup> September 1921, at Brescia, a town nestled at the foot of the Northern Italian Alps and famous mainly for being the start and finish for the prestigious Mille Miglia race, Frenchman, Jules Goux, drove his 3 Litre Ballot car to victory at the first ever Italian Grand Prix.

The car, commissioned by Edouard Ballot specifically to win Grand Prix races, is worthy of note as it had, unusually for the time, twin overhead camshafts and four valves per cylinder. It was also one of the first cars produced with front and rear servo-assisted breaks. This advanced configuration helped Goux achieve a fast winning time of 3 hours, 35 minutes, 9 seconds.

This time is proudly displayed alongside the drivers name on a recessed plate at the side of this stunning chronometer's case adding a personal detail to a watch whose main purpose is to celebrate the birth of Italy's continuing love affair with Grand Prix racing.



Frenchman Jules Goux and his 3 litre Ballot car at the first ever Italian Grand Prix Brescia, Italy 1921.

The Italian flag (Il Tricolore) is resplendent in ceramic on the case back beneath museum-grade sapphire crystal and alongside the year of the race.

Available in a Limited Edition of only 500 pieces worldwide, this chronometer is certain to become a sought-after collector's piece.





## C70 FRENCH GP 1906 CHRONOMETER



Although a Hungarian, Ferenc Szisz, was the winning driver on 27<sup>th</sup> June 1906 at the inaugural French Grand Prix, everything else about the victory had a decidedly Gallic flavour.

Local businesses in Le Mans, sensing the growing attraction of motorsport in France at the time, had clubbed together to finance the events prize of 45,000 Francs (the equivalent of 13kg of gold at the time) which took place on the outskirts of the town. It was to prove a very worthwhile investment whose returns are still coming in to this day!

The winning car was French, a Renault 90CV, and completed the 12 lap race in a time of 12 hours, 14 minutes and 7 seconds. And although Szisz was Hungarian, he had been an engineer in Renault's Paris factory before becoming riding mechanic for Louis Renault.

Marcel Renault, Louis's brother and co-founder of the automobile dynasty, was killed in 1903

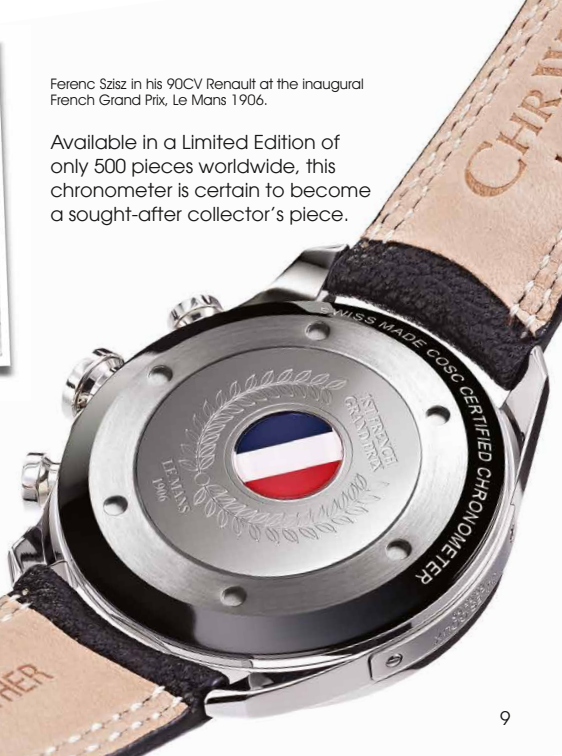


Ferenc Szisz in his 90CV Renault at the inaugural French Grand Prix, Le Mans 1906.

Available in a Limited Edition of only 500 pieces worldwide, this chronometer is certain to become a sought-after collector's piece.

during the Paris-Madrid road race and Szisz became the marque's leading driver.

The winning time is proudly displayed alongside Szisz's name on a recessed plate on the case of this stunning chronometer that celebrates the inaugural French Grand Prix. Appropriately, but also rather beautifully, the Tricolor is displayed in ceramic beneath museum-grade sapphire crystal on the back of the case.



## C70 BELGIAN GP 1925 CHRONOMETER



Italian racing driver, Antonio Ascari, drove his Alfa Romeo P2 to a famous victory at the inaugural Belgian Grand Prix at Spa Francorchamps on June 28<sup>th</sup> 1925. Four weeks later he was dead – fatally injured during the 23<sup>rd</sup> lap of the French Grand Prix at Montlery on 26<sup>th</sup> July.

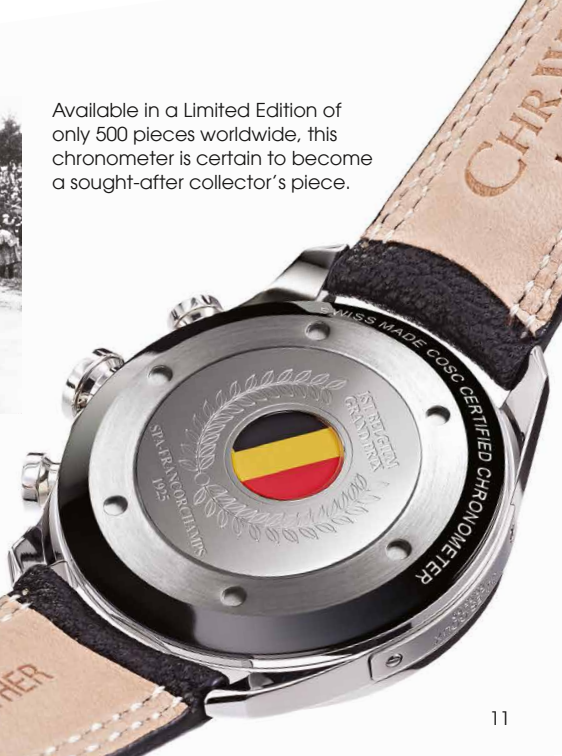
This tragedy is a stark reminder of the risks associated with motorsport, particularly in these pioneering years when little more than a leather helmet and trailing scarf protected drivers, but also adds a pithiness to this chronometer that celebrates the boundless joy for Ascari of only a month earlier.

Remembered as a driver for his daring skilfulness behind the wheel, Ascari won the race in a time of 6 hours, 42 minutes and 57 seconds, a fact that is faithfully recorded alongside the great driver's name on a recessed plate on the case of this wonderful chronometer.



The rest of the watch is devoted to the Belgian nation that played host to its first ever Grand Prix at a circuit that has become one of the most feted in motorsport. The yellow, red and black of the national flag is strikingly used on the dial and hands but is also beautifully reproduced in tricolour form in ceramic beneath museum-grade sapphire crystal on the case-back.

Available in a Limited Edition of only 500 pieces worldwide, this chronometer is certain to become a sought-after collector's piece.





## TECHNICAL INFORMATION

### FEATURES

- Swiss made chronometer
- Special limited edition of only 500 pieces worldwide
- 27 jewel Swiss quartz movement and COSC Certification
- Chronograph dials with split minutes/ seconds/ 1/10th seconds
- Thermo-compensated
- Convex sapphire crystal
- Multi-layered precision dial
- Tachymeter
- Marine-grade stainless steel case with screw-in crown
- "Winning Race Time Plate" on case side
- Back-plate includes ceramic disc of host nation set under museum-grade sapphire crystal

- Premium quality Italian leather strap including Bader deployment, stainless steel adjustable bracelet or high density natural rubber strap
- Unique engraved individual serial number

### TECHNICAL INFORMATION

Diameter:	42mm
Height:	11.8mm
Weight:	87g
Calibre:	ETA 251.264 COSC
Case:	316L stainless steel
Water Resistance:	10 BAR (100 metres)
Strap:	22mm



# HOW TO OPERATE YOUR C70 GRAND PRIX CHRONOMETER



## DISPLAY AND CONTROL BUTTONS

### DISPLAY ELEMENTS

Minute hand

Tenths counter

60 Minute counter

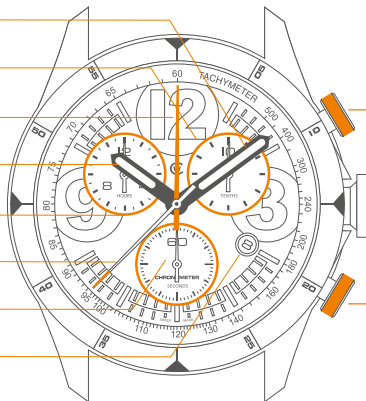
Hour hand

Hours counter

Centre stop-second counter

Seconds

Date window



### CONTROL BUTTONS

Push-button A

Crown

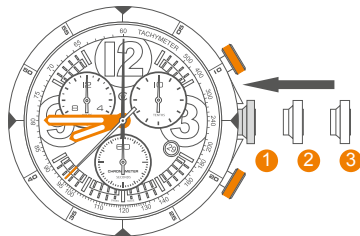
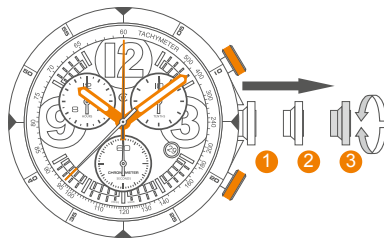
Push-button B



## SETTING THE TIME

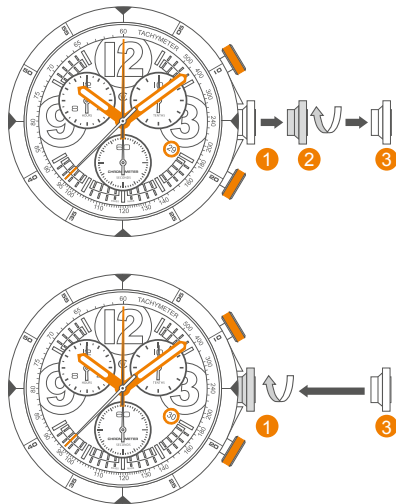
For a superior water resistance your crown is of the screw-in type. To get to position ① turn the crown anti-clockwise until it releases itself.

- Pull out the crown to position ③ (the watch stops).
- Turn the crown until you reach the correct time e.g. **08.45 hr.**
- Push the crown back into position ① and screw the crown in a clockwise direction in order to maintain water resistance. The crown should sit flush to the case.



## SETTING DATE (QUICK MODE)

- Pull out the crown to position **2** (the watch continues to run).
- Turn the crown clockwise, the hour hand moves in one hour increments until the correct date appears.
- Pull the crown to position **3**
- Push the crown back into position **1** until flush with the case and screw in.



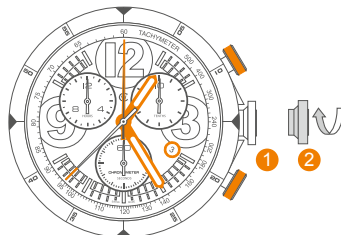
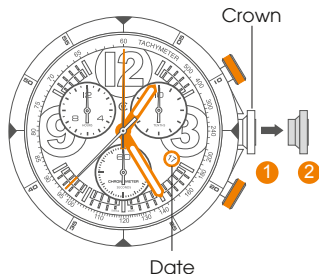
## SETTING THE DATE/TIME

### Example:

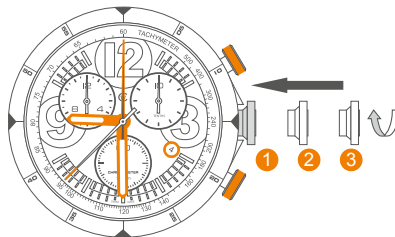
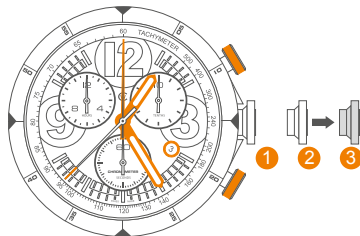
Date / time on the watch: **17th / 01.25 hr**

Present date / time: **4th / 21.25 hr**

- Pull out the crown to position **2** (the watch continues to run).
- Turn the crown clockwise until yesterday's date appears ie. **3rd**.



- Pull out the crown to position ③ (the watch stops).
- Turn the crown clockwise until the correct date ie. 4th appears (after passing through midnight).
- Continue to turn the crown until the correct time 21.30 hr appears.
- Push the crown back into position ① until flush with the case and screw in.



## CHRONOGRAPH FUNCTIONS:

### DISPLAY ELEMENTS

Tenths counter

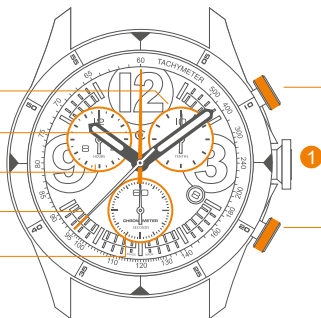
60 Minute counter

Hours counter

Centre stop-second

Seconds

- The **hour counter** measures 12 hours per rotation.
- The **minute counter** measures 60 minutes per rotation.
- The **centre stop-second** measures 60 seconds per rotation.
- The **1/10 second counter** measures 1 second per rotation.



### CONTROL BUTTONS

Push-button A  
(Start / Stop)

Push-button B  
(Reset)

PLEASE NOTE: Before using the chronograph functions, please ensure that:

- The crown is in position **1** (screwed in).
- The 4 chronograph hands are at zero position. Should this not be the case, the positions of the hands must be adjusted (see the chapter entitled 'Adjusting chronograph hands to zero position' on page 24).

## BASIC FUNCTIONS

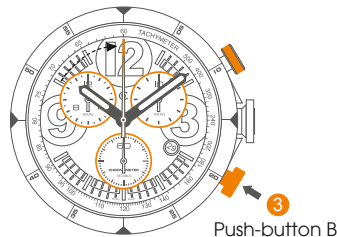
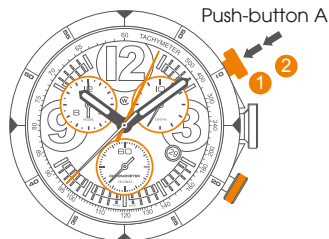
### (START / STOP / RESET)

#### Example:

- ① **Start:** Press push-button A.
- ② **Stop:** to stop the timing, press push-button A once more and read the 4 chronograph counters: 4 min / 38 sec / 7/10 sec.
- ③ **Zero positioning:**  
Press push-button B. (The 4 chronograph hands will be reset to their zero positions).

#### Example of use:

Timing a runner over 100m.



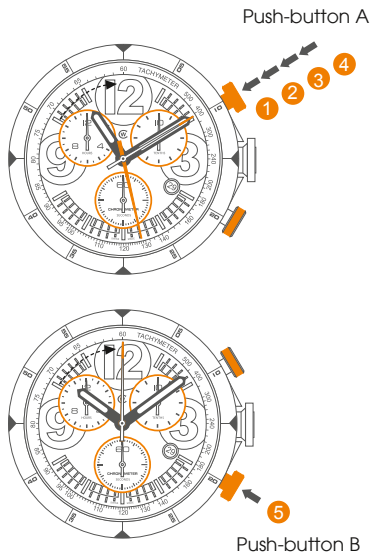
## ACCUMULATED TIMING

### Example:

- 1 **Start:** (start timing).
- 2 **Stop:** (e.g. 15 min 5 sec following 1).
- 3 **Restart:** (timing is resumed).
- 4 **Stop:** (e.g. 13 min 5 sec following 3).  
= 28 min 10 sec (accumulated measured time is shown)
- 5 **Reset:** The 4 chronograph hands are returned to their zero positions.
- 6 **Repeat:** as necessary.

### Example of use:

Overall time to complete a journey less the coffee breaks.



## INTERMEDIATE OR INTERVAL TIMING

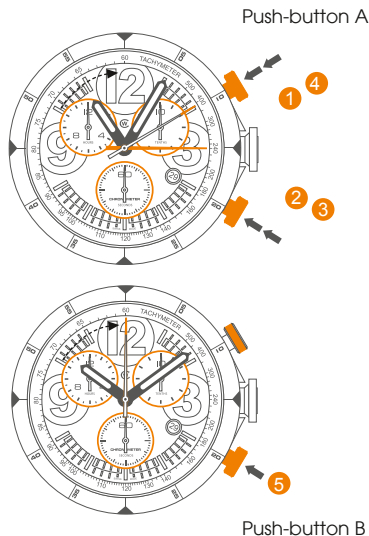
### Example:

- ➊ **Start:** (start timing).
- ➋ **Display interval:**  
e.g. 15 minutes 10 seconds (timing continues in the background).
- \* ➌ **Making up the measured time:**  
(the 4 chronograph hands are quickly advanced to the ongoing measured time).
- ➍ **Stop:** (final time is displayed).
- ➎ **Reset:** The 4 chronograph hands are returned to their zero positions.

### Please note:

- \* Following ➌, further intervals or intermediates can be displayed by pressing **push-button B**.

**Example of use:** 4 x 100m relay.



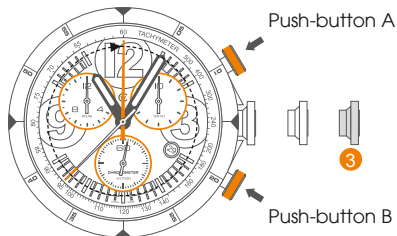
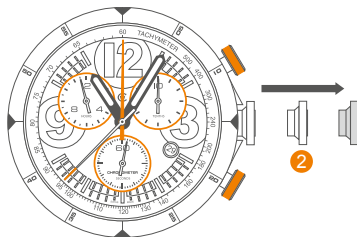


## ADJUSTING CHRONOGRAPH HANDS TO ZERO POSITION

### Example:

One or several chronograph hands are not in their correct zero positions and have to be adjusted (e.g. following a battery change).

- Pull out the crown to position **2** press **Button A** to adjust the hour chronograph hand and **Button B** to reset the 60 minute counter to zero
- Pull out the crown to position **3**. Push **Button A** to adjust the stop second hand and **Button B** to adjust the tenths seconds hand.







## WATER RESISTANCE

Although your watch has been through vigorous static pressure testing, it is worth remembering that there are many variables that can affect the water resistance of your watch.

For instance, arm movements during swimming and the sudden impact of diving and water sports will drastically increase the pressure the watch is under. Wearing your watch in the bath, shower, or sauna can also have an effect as a rapid increase in temperature can cause seals to expand and in extreme cases, malfunction or create condensation.

For these reasons, the water resistance rating of your watch (as shown) **should only ever be considered a guideline** and we strongly recommend they are always adhered to.



### **1 BAR (10 METRES)**

Safe to wear your watch while washing your hands with tap water.



### **3 BAR (30 METRES)**

Washing your car and/or general hose pipe usage.



### **5 BAR (50 METRES)**

Water resistant to most household shower units.



### **10 BAR (100 METRES)**

Safe to use while snorkelling in open water.



### **30 BAR (300 METRES)**

Ideal for experienced divers and those practising scuba-diving.



### **50 BAR (500 METRES)**

Professional divers, experiencing prolonged exposure underwater.



### **100 BAR (1000 METRES)**

Professional deep sea diving.

## STRAPS & BRACELETS

As you would expect, we place as much emphasis on the quality of our straps and bracelets as we do our watches. We only use the finest leathers for our straps and our premium alligator straps are all ethically sourced from CITES approved farms in Louisiana.

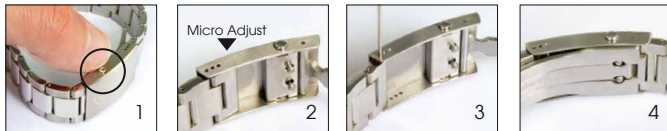
Similarly, we only use the finest metals in the construction of our bracelets, all of which are precision engineered for durability, efficiency and comfort. The following guidelines explain how easy it is to use and adjust your Christopher Ward strap or bracelet.

### LEATHER STRAP WITH BADER DEPLOYMENT



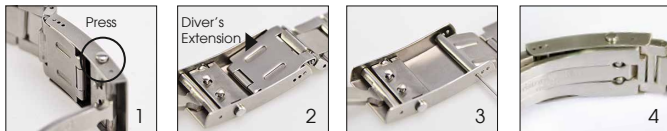
1. Press to release
2. Pull open the clasp
3. Locate the opening and thread the strap through
4. Close the clasp

## BRACELET WITH MICRO-ADJUSTMENT



1. Press to release
2. Locate adjusting pin
3. Adjust pin position
4. Close the clasp

## DIVER'S EXTENSION (WHERE APPLICABLE)



1. Press to release
2. Locate divers extension
3. Expand extension
4. Close the clasp

# OUR WATCH CARE PROGRAMME

Your watch is constructed from the finest components and materials available, including one of Switzerland's finest quartz movements. As with all watches of this quality, with the right care and attention, your new Christopher Ward watch has the potential to become an heirloom piece giving further joy to future generations. It's for this reason we have created our industry leading approach to after-sales care, starting with our famous 60/60 Guarantee which remains the most comprehensive guarantee in the world of watchmaking.

Christopher Ward's 60/60 Guarantee is designed to deliver complete peace of mind and the best support possible throughout the lifetime of your ownership. The guarantee has two key elements and sits alongside our Servicing and Repairs Programme:

## **60/60 GUARANTEE**

### **1. 60 DAY FREE RETURNS**

Our success depends on you being completely happy with your new Christopher Ward watch. You have up to 60 days to return your watch, absolutely free of charge, and receive a replacement or full refund by return – so long as it has not been worn and is returned in box-perfect condition.

### **2. 60 MONTH MOVEMENT GUARANTEE**

Your watch, at its heart, has a top quality precision engineered Swiss movement – so it's very unlikely to give you problems with the minimum amount of care and attention, including a regular service. We recommend you return your watch to us every 3/4 years for a service, so our expert technicians can keep your fine timepiece in peak condition. (We recommend that whenever your quartz battery needs changing you consider having the watch serviced at the same time to keep it in perfect working order.)

## **SERVICING & REPAIRS...THE CHRISTOPHER WARD WAY...**

Our innovative approach to servicing and repairing your Christopher Ward watch means that having your watch serviced or repaired doesn't mean months of waiting followed by an exorbitant bill – which is more or less the experience guaranteed by every other luxury watch brand. We have developed an easy, quick and affordable expert service and repairs programme that doesn't cost the earth and has your watch back where it belongs – on your wrist – in double-quick time.

Visit our website for more details about our 60/60 Guarantee and Service and Repair Programme.



## KEEPING IN TOUCH WITH CHRISTOPHER WARD

From small beginnings just a few short years ago (our first workshop was actually a refurbished chicken shed!), Christopher Ward has won a worldwide following for his eponymous watch brand and can justifiably claim to manufacture the most affordable luxury watches in the world.

For many, the philosophy behind the brand, of trying to put luxury watches within the reach of everyone, is as attractive as the watches themselves, as is the very open approach of the business which means that Chris and the team spend a lot of time communicating personally with our customers – many of whom have become friends.

As the owner of a Christopher Ward watch, if ever you need to get hold of us we are at your service. We have listed some useful contact details on the back cover.

There is also always something new going on at our website at **[www.christopherward.co.uk](http://www.christopherward.co.uk)** and, if you haven't already discovered the independent forum dedicated to our brand at **[www.christopherwardforum.com](http://www.christopherwardforum.com)** we would recommend a visit. Informative and fun, it's a great place to hear the unexpurgated view of Christopher Ward of London!

# CHR. WARD

L O N D O N

## HEAD OFFICE

Christopher Ward (London) Limited,  
1 Park Street, Maidenhead,  
Berkshire SL6 1SL United Kingdom  
+44 (0)1628 763040

## CUSTOMER SERVICES

UNITED KINGDOM: +44 (0)1628 763040  
UNITED STATES OF AMERICA: 1.877.226.8224  
[customerservices@christopherward.co.uk](mailto:customerservices@christopherward.co.uk)  
[technical@christopherward.co.uk](mailto:technical@christopherward.co.uk)

## WEBSITE

[www.christopherward.co.uk](http://www.christopherward.co.uk)  
[www.christopherward.com](http://www.christopherward.com)  
[www.christopherward.eu](http://www.christopherward.eu)