

# C60 Trident GMT 600

Owner's Handbook



## Time on your side

Your Christopher Ward watch has been designed in Britain and engineered in Switzerland by highly talented craftspeople. This ensures not only accurate and precise timekeeping, but also brings a real pride of ownership that only watches of the highest quality standards can hope to deliver.

You have made an investment, a good one, and the aim of this manual is to help you make the most of that investment in what we hope will be a lifetime of ownership.

Chris, Mike and Peter  
(Co-founders)

## Welcome to the evolution

2 If there's a watch that epitomises the progress of Christopher Ward, look no further than the C60 Trident. Modestly introduced in 2009, the original C60 Trident Automatic was a dive watch indebted to the look and feel of the Rolex Submariner, whilst incorporating an aluminium bezel and 300m water resistance.

Yet the largest waves can start with the smallest ripples; a trickle of orders soon became a tide. The launch of a Mk 2 edition in 2015 saw a new premium Pro 600 model swap circular indexes for rectangular ones, double its water resistance and introduce a ceramic bezel into the

equation. Since then, the Trident Collection has grown exponentially – think different case materials, movements and colours – cementing itself as a cornerstone of the brand.

But it's more than just a bestseller: each update has become symbolic of the advancements made by the brand as it reaches adolescence. So when the collective minds between CW's Maidenhead and Biel HQs began to turn to the thought of a Mk 3 update, it's not an understatement to say that there was quite a pressure to make this Trident series the best one yet.

If the transition from Mk 1 from Mk 2 was a full-on revolution in both technicality and design, Trident Mk 3 takes the best elements from its predecessor and refines them further. This is an evolution rather than a revolution; and it stems from both a greater knowledge gained over the five years since the Mk 2 first surfaced, as well as the comments of our customers.

From higher quality materials – Trident Mk 3 answers the call to upgrade the lume found across our dive range – and finer levels of detail through to finessed design, they all culminate here.

With Trident Mk 3, it's the commitment to the smallest details that ultimately make the biggest impact.



## C60 Trident GMT 600

Since its introduction in the mid-1950s, the GMT watch has posed an interesting challenge for many designers around the world.

To begin with, there's the importance of finding clarity from a technical perspective – it has to convey both 12 and 24 hour time in an easy-to-read format, after all – but with so many famous GMT watches on the market, it's also crucial to create something that is distinctively its own. For the team at CW, there was only one way to approach such a brief whilst maintaining the recognisable DNA of the Trident series; as the old expression goes, the devil is in the detail.

With the development of Trident 3, this focus on finessing and improving became crucial to making this GMT 600 superior to its

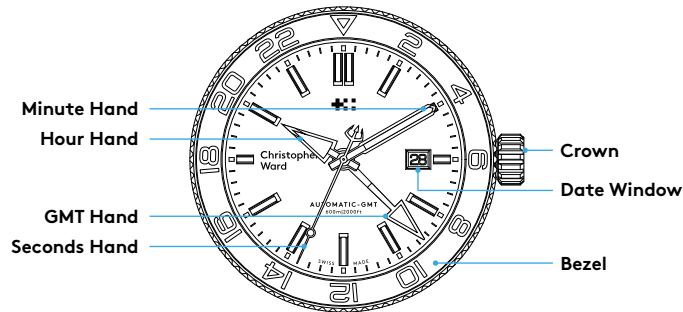
predecessors. From aspects such as its newly brushed and polished multi-faceted indexes filled with Grade X1 GL C1 Super-LumiNova®, through to a new case design sculpted with delicate 'light-catcher' lines, or our signature trident-shaped counter-balance; this is a watch that will provide a graceful distraction for anybody in the midst of their long-haul flight.

With its rugged build quality and modern looks – not to mention an eye for detail – the C60 Trident GMT 600 is a travel watch that's as comfortable at 30,000ft as it is 600m below the waves.



## Display and control buttons

Your C60 Trident GMT 600 has a maximum power reserve of 42 hours when fully wound. To re-power the watch after a period of non-use, simply wind the crown for approximately 20 revolutions. Normal wearing will very quickly allow the rotor to start re-powering the watch over time after putting it on your wrist.





## Features

- Swiss made
- Self-winding mechanical movement
- 42-hour power reserve
- Date calendar
- Anti-shock system
- Marine-grade, stainless steel case
- Embossed screw-in crown
- Anti-reflective sapphire crystal
- Unidirectional, polished ceramic bezel filled with Super-LumiNova®
- Black or blue polished dial
- Diamond polished and Super-LumiNova® filled indexes and hands
- Signature Trident counter-balance on seconds hand
- Screw-down deep-stamped 3D backplate
- Unique engraved serial number
- Luxury presentation case and owner's handbook
- Marine-grade stainless steel bracelet or hybrid rubber strap, both with quick release mechanism

### Technical Information

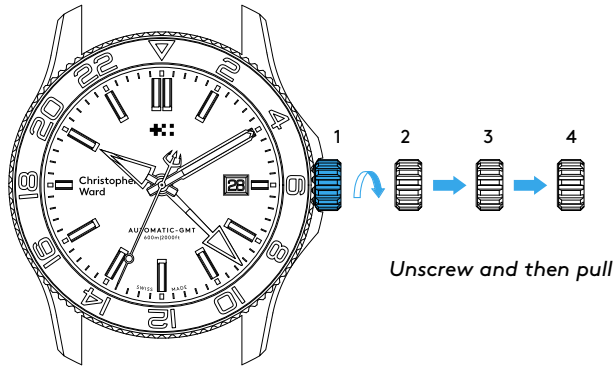
Calibre	<b>ETA 2893</b>
Case	<b>Stainless Steel</b>
Diameter	<b>42mm, 38mm</b>
Weight	<b>95g</b> (42mm), <b>73g</b> (38mm)
Water resistance	<b>60 ATM (600 metres)</b>
Vibrations	<b>28,800 per hour</b>
Timing tolerance	<b>-20/+20 seconds per day</b>
Dial Colour	<b>Black or blue</b>
Lume	<b>Super-LumiNova® Grade X1 GL C1</b>



## Setting the time, date and GMT hand

For a superior water resistance your crown is of the screw-in type. The crown should sit flush to the case (position **1**) in order to maintain water resistance.

- First unscrew the crown anti-clockwise from the case to position **2** for winding in power. Wind in a clockwise direction to re-power the watch. Your C60 Trident GMT 600 has a maximum power reserve of 42 hours when fully wound. Normal wearing will allow the rotor to start re-powering the watch over time after putting on your wrist.
- Pull gently into position **3**. For rapid date correction, turn in an anti-clockwise direction. To set the GMT hand, turn the crown clockwise and rotate the hand until you have reached the desired time indication. The GMT hand moves in one-hour increments.
- Pull gently into position **4**. This position is used for handsetting and stopping of the second hand. For precise time setting it is recommended to pass beyond the desired minute and to set the hand backwards.



1. Crown screw-in position
2. Manual winding
3. Date/GMT setting
4. Time setting

**PLEASE NOTE:**

*Date correction should not be carried out between 20.00 hr and 02.00 hr as the watch gearing will already be aligning itself to change the date. The crown should always be pushed in after adjustment, and it is best to do so from position 3 to avoid advancing beyond the desired date. You must always ensure the crown is fully tightened before any use in water.*

## Using the GMT hand for travel

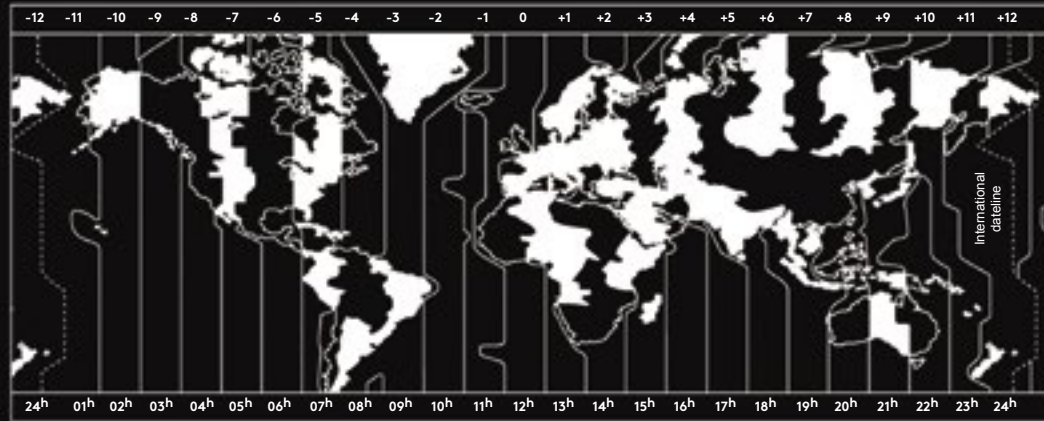
Set the time in your new destination by pulling the crown into position **4** and move the hour/ minute hands until they indicate the desired time.

Push crown into position **3** and wind, clockwise, the GMT hand around the 24-hour scale on the bezel until you have the right time at home. E.g. If you're travelling from London at 12:10 to New York, you would turn the hour/minute hands to 7:10 (New York time is five hours behind London) and wind the GMT hand around to the 12:10 position.

Once set, it means that, for example, you can gauge the time to ring your friends and family without waking them in the middle of the night.

### **PLEASE NOTE:**

*The table opposite can be used to determine the appropriate time zone when setting the hour/minute hands.*



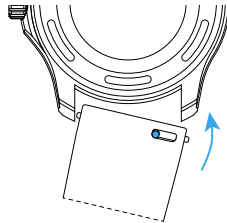
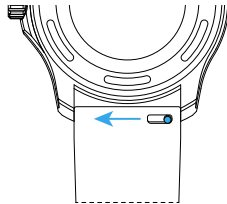
## Straps and bracelets

As you would expect, we place as much emphasis on the quality of our straps and bracelets as we do our watches. We only use the finest materials in our straps, with quick-release pins also included for your convenience.

The following guidelines explain how easy it is to use, adjust and replace your Christopher Ward strap or bracelet.

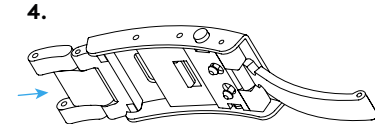
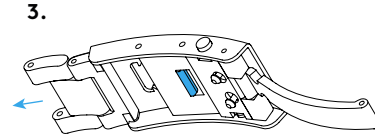
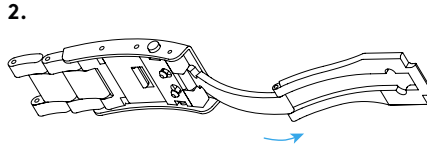
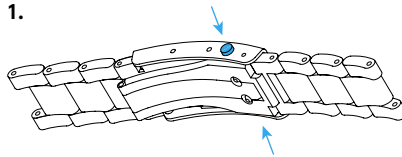
### Using the quick-release pins on your strap

1. Locate the quick-release pin on your strap. Pull the pin to the side to detach your strap.
2. To reattach your strap, align the pins to the lug holes and click the strap into position. Repeat for the other side.



## How to use the micro adjustment on your bracelet

1. Press buttons to release
2. Pull open the clasp
3. There are five micro adjustment positions, which allows for a maximum extension of 8.4mm. To extend, pull the lever to unlock and simultaneously pull on the bracelet into the desired position.
4. To shorten, simply push the bracelet back into the clasp.





## Water resistance

Although your watch has been through vigorous static pressure testing, it is worth remembering that there are many variables that can affect the water resistance of your watch. For instance, arm movements during swimming and the sudden impact of diving and water sports will drastically increase the pressure the watch is under.

Wearing your watch in the bath, shower, or sauna can also have an effect as a rapid increase in temperature can cause seals to expand and in extreme cases, malfunction or create condensation.

For these reasons, the water resistance rating of your watch (as shown) should only ever be considered a guideline and we strongly recommend they are always adhered to.



**1 ATM (10 metres)**

Safe to wear your watch while washing your hands with tap water



**15 ATM (150 metres)**

Safe to use while snorkelling in open water



**100 ATM (1000 metres)**

Professional deep sea diving



**3 ATM (30 metres)**

Washing your car and/or general hose pipe usage



**30 ATM (300 metres)**

Ideal for experienced divers and those practising scuba-diving



**5 ATM (50 metres)**

Water resistant to most household shower units



**60 ATM (600 metres)**

Professional divers, experiencing prolonged exposure underwater

## 60|60 Guarantee

Your watch is constructed from the finest components and materials available including one of Switzerland's finest mechanical movements. As with all watches of this quality, with the right care and attention, your new Christopher Ward watch has the potential to become an heirloom piece giving further joy to future generations.

It's for this reason we have created our industry leading approach to after-sales care, starting with our famous 60|60 Guarantee which remains the most comprehensive guarantee in the world of watchmaking.

### **60 Day Free Returns**

Our success depends on you being completely happy with your new Christopher Ward watch. You have up to 60 days from despatch to return your watch, with free shipping, and receive a replacement or full refund, for which the watch must be in perfect, unworn condition and accompanied by all its original packaging and paperwork.

### **60 Month Movement Guarantee**

Your watch has a top-quality precision engineered Swiss movement – but if it develops a movement fault within 5 years, and has been serviced by us at the recommended interval (within a maximum of 4 years from date of despatch), we will repair it for free under warranty. Not all mechanical problems or quartz battery replacements are

considered movement faults and your watch will need to be sent to us for diagnosis and service history checks, before processing a repair under warranty.

### **Servicing and Repairs - the Christopher Ward way...**

Our innovative approach to service and repair means that having your watch attended to doesn't mean months of waiting followed by an exorbitant bill. We have developed a quick, easy and affordable expert service and repairs process that doesn't cost the earth and has the watch back where it belongs – on your wrist – in reasonable time.

**We recommend you service your watch at intervals of 3-4 years** to keep it in peak condition and to maintain your **60 month guarantee**. If your watch develops an issue within 60 months of despatch, we will first check its service history before progressing a repair. If you have not had your watch serviced at the recommended interval, we will not cover the cost of the repair under warranty, and will recommend a maintenance service in addition to any repair work due.

**[christopherward.co.uk/cservices/60-60-guarantee](https://christopherward.co.uk/cservices/60-60-guarantee)**

## Keeping in touch with Christopher Ward

From small beginnings just 15 years ago (our first workshop was actually a refurbished chicken shed!), Christopher Ward has won a worldwide following and can justifiably claim to manufacture the most affordable luxury watches in the world. For many, the philosophy behind the brand, of trying to put luxury watches within the reach of everyone, is as smart as the watches themselves. The very open approach of the business sees Chris, Mike and Peter, as well as the rest of the team, spending lots of time communicating

personally with customers – listening to feedback which helps us continually improve as we grow. As the owner of a Christopher Ward watch, if you ever need to get hold of us we are at your service. There is always something new on our website, across our social media communities and on the Christopher Ward Forum – informative and fun, these are the best places to join the conversation about the latest new releases, news and offers in the world of Christopher Ward.

### **Head Office**

1 Park Street, Maidenhead,  
Berkshire SL6 1SL  
United Kingdom

### **Customer Services**

UK: +44 (0)1628 763040

USA: 1.877.226.8224

[customerservices@christopherward.co.uk](mailto:customerservices@christopherward.co.uk)

[technical@christopherward.co.uk](mailto:technical@christopherward.co.uk)

**[christopherward.co.uk](http://christopherward.co.uk)**