

**C7 ITALIAN RACING RED CHRONOMETER**  
LIMITED EDITION

OWNER'S HANDBOOK

**CHR. WARD**  
L O N D O N

## TIME ON YOUR SIDE...

Your Christopher Ward watch has been designed and engineered by highly talented craftspeople to ensure not only accurate and precise timekeeping but also to bring a real pride of ownership that only luxury items of the highest quality can ever hope to deliver.

You have made an investment, a good one, and the aim of this handbook is to help you make the most of that investment during what I hope will be a lifetime of ownership.



Christopher Ward

### CONTENTS

C7 ITALIAN RACING RED CHRONOMETER	2-3
THE COSC CERTIFIED CHRONOMETER	4-5
TECHNICAL INFORMATION	6-7
HOW TO OPERATE YOUR C7 CHRONOMETER	8-21
OUR WATCH CARE PROGRAMME	22-23
GENERAL INFORMATION	24

## C7 ITALIAN RACING RED CHRONOMETER

There are few sights in motorsport as evocative as a Ferrari in full flight at Monza, however, even we were surprised at the level of demand for our original C7 Italian Racing Red (C7 IRR) – a watch that celebrated this most perfect of automotive unions. Rather appropriately, it became the fastest selling timepiece we had ever created and the limited edition sold out within weeks.

With the supremely accurate, thermo-compensated ETA 251.233 COSC certified chronograph movement as its engine, the new C7 IRR is one of the most accurate watches in the world. Add the finely-tuned precision of the case, the dashing looks of the “Toro Bravo” Italian leather of the strap with our signature Bader deployment, there is every reason to believe that this new version will also become an object of desire for Tifosi everywhere.





## THE COSC CERTIFIED CHRONOMETER

To gain chronometer status, watchmakers submit their Swiss movements to COSC, an independent, non-profit making watch accuracy verification organisation based in Geneva, to be tested against the international standards of ISO and DIN.

Certification follows exhaustive testing. In achieving the coveted status of Certified Chronometer, a movement must not only be made from the highest quality components, but also be the object of special care on part of the finest horologists and technicians as it is painstakingly assembled.

Only movements which meet the precision criteria are granted an official certificate. Each uncased movement is individually tested for fifteen days, in five positions, at three different temperatures.

Movements are fitted with a second hand for tests and measurements are made daily with the aid of cameras. Based on all of these measurements, seven eliminatory criteria are calculated, each of which must be met.

The exacting and rigorous nature of the COSC certification process means that the achievement of Certified Chronometer status is extremely rare. In fact, of all the watches produced in Switzerland each year, **just 3% bear the coveted COSC 'bulletin de marche'** or certificate of watch performance. Which is why, when you read the words 'Certified Chronometer' on a Swiss watch you can be sure that the movement behind the elegant dial is a rare example of fine Swiss watchmaking which is accurate, precise... **and extremely rare.**



## TECHNICAL INFORMATION

### FEATURES

- Worldwide limited edition of only 500 pieces
- Swiss made
- 27 jewel, multi-functional thermo-compensated Swiss quartz chronometer
- 1/10ths second split-timing
- 42mm, 316L marine-grade stainless steel case with deep-etched back-plate engraving
- Tachymeter bezel
- Anti-reflective sapphire crystal
- SuperLuminova™ indexes and hands
- Luxurious 'Toro Bravo' leather strap with Bader deployment

### TECHNICAL INFORMATION

Diameter:	42mm
Height:	11.6mm
Calibre:	ETA 251.233 COSC
Case:	316L stainless steel
Water Resistance:	10 ATM (100 metres)
Strap:	22mm
Dial colour:	Italian Racing Red





# HOW TO OPERATE YOUR C7 CHRONOMETER

The background of the slide is a detailed, blue-toned image of a chronometer watch face. It features a large outer scale with numbers from 0 to 60 in increments of 5. There are three sub-dials: one at the 12 o'clock position, one at the 3 o'clock position, and one at the 6 o'clock position. The watch has multiple hands, including a large central hand and several smaller hands for the sub-dials. The brand name 'CHRWARD' is visible in the center of the watch face.

## DISPLAY AND CONTROL BUTTONS

### DISPLAY ELEMENTS

Minute Hand

Tenths counter

Hour hand

Hour counter

Centre stop-second

Minute counter

Seconds hand

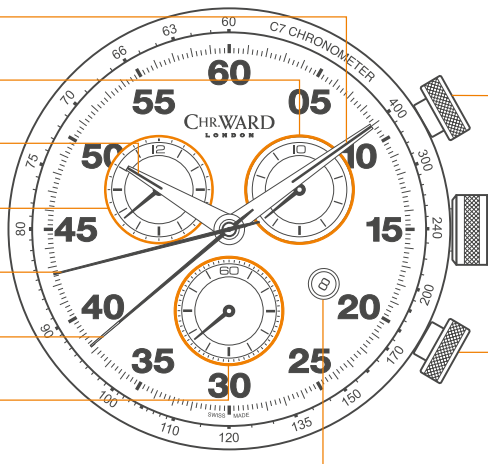
Date Window

### CONTROL BUTTONS

Push-button A

Crown

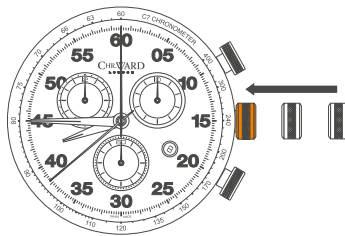
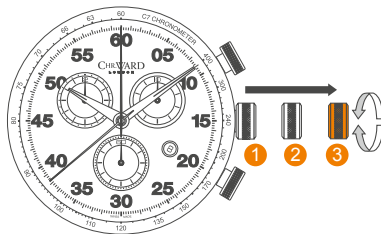
Push-button B



## SETTING THE TIME

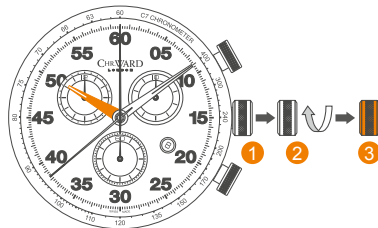
For a superior water resistance your crown is of the screw-in type. To get to position ① turn the crown anti-clockwise until it releases itself.

- Pull out the crown to position ③ (the watch stops).
- Turn the crown until you reach the correct time e.g. **08.45 hr.**
- Push the crown back into position ① and screw the crown in a clockwise direction in order to maintain water resistance. The crown should sit flush to the case.

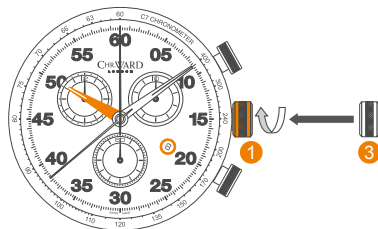


## SETTING DATE (QUICK MODE)

- Pull out the crown to position **2** (the watch continues to run).
- Turn the crown clockwise, the hour hand moves in one hour increments until the correct date appears.
- Pull the crown to position **3**
- Push the crown back into position **1** until flush with the case and screw in.



**PLEASE NOTE:** The date can not be changed during the date changing phase between 20.00 hrs and 02.00 hrs as the watch gearing will already be aligning itself to change the date. The crown should always be screwed in after adjustment, and it is best to do so from position **3** to avoid advancing beyond the desired date.



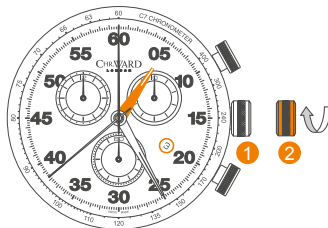
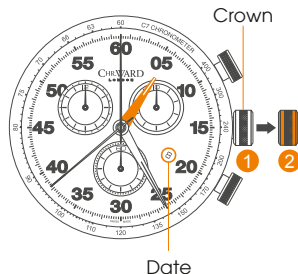
## SETTING THE DATE/TIME

### Example:

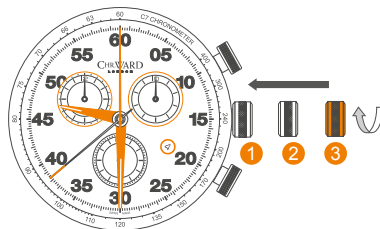
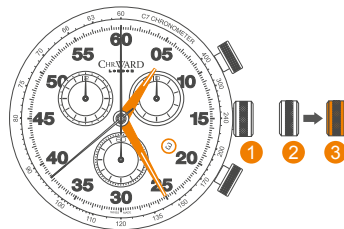
Date / time on the watch: **8th / 01.25 hr**

Present date / time: **4th / 21.25 hr**

- Pull out the crown to position **2** (the watch continues to run).
- Turn the crown clockwise until yesterday's date appears ie. **3rd**.



- Pull out the crown to position **3** (the watch stops).
- Turn the crown clockwise until the correct date ie. 4th appears (after passing through midnight).
- Continue to turn the crown until the correct time 21.30 hr appears.
- Push the crown back into position **1** until flush with the case and screw in.



## CHRONOGRAPH FUNCTIONS:

### DISPLAY ELEMENTS

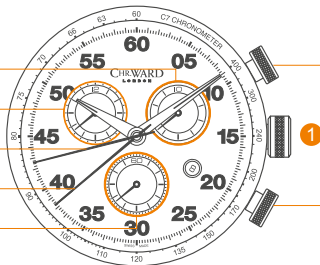
Tenths

Hours

Centre stop-second

60 minute counter

Seconds



### CONTROL BUTTONS

Push-button A  
(Start / Stop)

Push-button B  
(Reset)

- The **hour counter** measures 12 hours per rotation.
- The **minute counter** measures 60 minutes per rotation.
- The **centre stop-second** measures 60 seconds per rotation.
- The **1/10 second counter** measures 1 second per rotation.

PLEASE NOTE: Before using the chronograph functions, please ensure that:

- The crown is in position **1** (screwed in).
- The 4 chronograph hands are at zero position. Should this not be the case, the positions of the hands must be adjusted (see the chapter entitled 'Adjusting the chronograph hands to zero position').

## BASIC FUNCTIONS

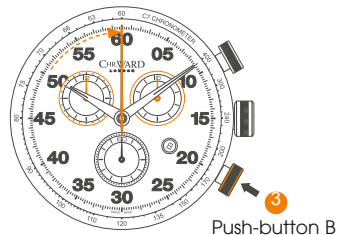
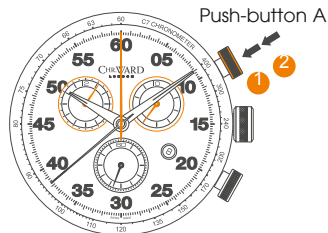
### (START / STOP / RESET)

#### Example:

- ➊ **Start:** Press push-button A.
- ➋ **Stop:** to stop the timing, press push-button A once more and read the 4 chronograph counters: 1 hour / 38 min / 0 sec / 6/10 sec.
- ➌ **Zero positioning:**  
Press push-button B. (The 4 chronograph hands will be reset to their zero positions).

#### Example of use:

Timing a runner over 100m.





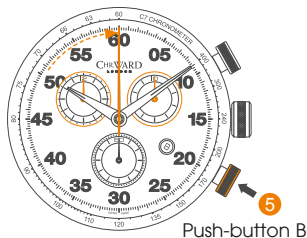
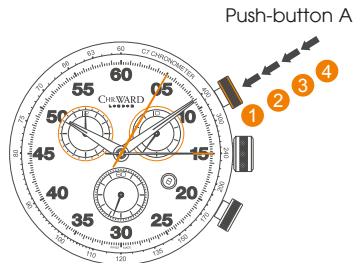
## ACCUMULATED TIMING

### Example:

- ➊ **Start:** (start timing).
- ➋ **Stop:** (e.g. 15 min 5 sec following ➊).
- ➌ **Restart:** (timing is resumed).
- ➍ **Stop:** (e.g. 13 min 5 sec following ➌).  
= 28 min 10 sec
- ➎ **Reset:** The 4 chronograph hands are returned to their zero positions.
- ➏ **Repeat:** as necessary.

### Example of use:

Overall time to complete a journey less the coffee breaks.



## INTERMEDIATE OR INTERVAL TIMING

### Example:

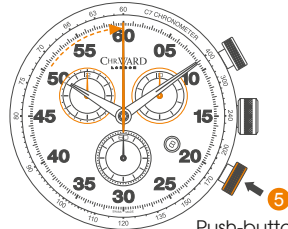
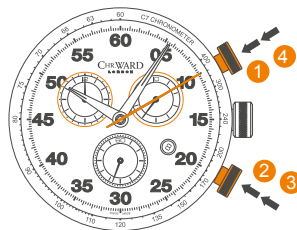
- ➊ **Start:** (start timing).
- ➋ **Display interval:**  
e.g. 10 minutes 10 seconds (timing continues in the background).
- \* ➌ **Making up the measured time:**  
(the 4 chronograph hands are quickly advanced to the ongoing measured time).
- ➍ **Stop:** (final time is displayed).
- ➎ **Reset:** The 4 chronograph hands are returned to their zero positions.

### Please note:

- \* Following ➌, further intervals or intermediates can be displayed by pressing **push-button B**.

**Example of use:** 4 x 100m relay.

Push-button A



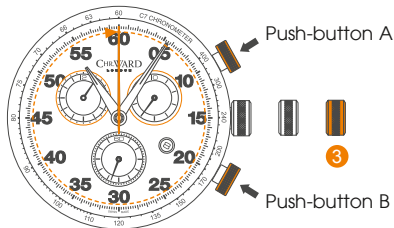
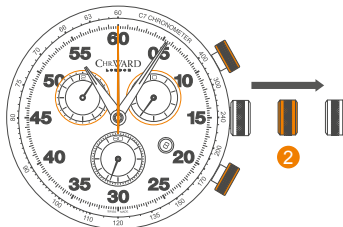
Push-button B

## ADJUSTING CHRONOGRAPH HANDS TO ZERO POSITION

### Example:

One or several chronograph hands are not in their correct zero positions and have to be adjusted (e.g. following a battery change).

- Pull out the crown to position **2** press **Button A** to adjust the hour counter and **Button B** to reset the 60 minute counter to zero
- Pull out the crown to position **3**. Push **Button A** to adjust the stop second hand and **Button B** to adjust the tenths seconds hand.



## WATER RESISTANCE

Although your watch has been through vigorous static pressure testing, it is worth remembering that there are many variables that can affect the water resistance of your watch.

For instance, arm movements during swimming and the sudden impact of diving and water sports will drastically increase the pressure the watch is under. Wearing your watch in the bath, shower, or sauna can also have an effect as a rapid increase in temperature can cause seals to expand and in extreme cases, malfunction or create condensation.

For these reasons, the water resistance rating of your watch (as shown) **should only ever be considered a guideline** and we strongly recommend they are always adhered to.



### **1 ATM (10 METRES)**

Safe to wear your watch while washing your hands with tap water.



### **3 ATM (30 METRES)**

Washing your car and/or general hose pipe usage.



### **5 ATM (50 METRES)**

Water resistant to most household shower units.



### **10 ATM (100 METRES)**

Safe to use while snorkelling in open water.



### **30 ATM (300 METRES)**

Ideal for experienced divers and those practising scuba-diving.



### **50 ATM (500 METRES)**

Professional divers, experiencing prolonged exposure underwater.



### **100 ATM (1000 METRES)**

Professional deep sea diving.

## STRAPS & BRACELETS

As you would expect, we place as much emphasis on the quality of our straps and bracelets as we do our watches. We only use the finest leathers for our straps and our premium alligator straps are all ethically sourced from CITES approved farms in Louisiana.

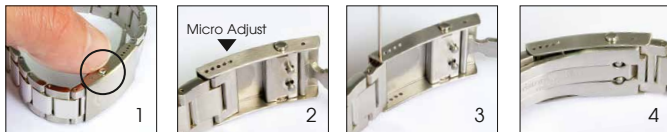
Similarly, we only use the finest metals in the construction of our bracelets, all of which are precision engineered for durability, efficiency and comfort. The following guidelines explain how easy it is to use and adjust your Christopher Ward strap or bracelet.

### LEATHER STRAP WITH BADER DEPLOYMENT



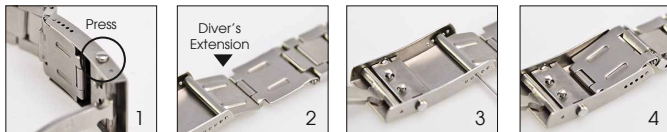
1. Press to release
2. Pull open the clasp
3. Locate the opening and thread the strap through
4. Close the clasp

## BRACELET WITH MICRO-ADJUSTMENT



1. Press to release
2. Expand adjustment
3. Adjust pin position
4. Close the clasp

## DIVER'S EXTENSION (WHERE APPLICABLE)



1. Press to release
2. Expand adjustment
3. Adjust pin position
4. Close the clasp

## QUICK-RELEASE PINS (WHERE APPLICABLE)



1. Locate the release
2. Drag button back
3. Detach strap
4. Align holes to click a new strap in position

# OUR WATCH CARE PROGRAMME

Your watch is constructed from the finest components and materials available including one of Switzerland's finest quartz movements. As with all watches of this quality, with the right care and attention, your new Christopher Ward watch has the potential to become an heirloom piece giving further joy to future generations. It's for this reason we have created our industry leading approach to after-sales care, starting with our famous 60/60 Guarantee which remains the most comprehensive guarantee in the world of watchmaking.

Christopher Ward's 60/60 Guarantee is designed to deliver you complete peace of mind and the best support possible throughout the lifetime of your ownership. The guarantee has two key elements and sits alongside our Servicing and Repairs Programme:

## **60/60 GUARANTEE**

### **1. 60 DAY FREE RETURNS**

Our success depends on you being completely happy with your new Christopher Ward watch. If for any reason you aren't, you have up to 60 days to return your watch, absolutely free of charge, and receive a replacement or full refund by return – and without any quibbles from us!

### **2. 60 MONTH MOVEMENT GUARANTEE**

Your watch, at its heart, has a top quality precision engineered Swiss movement – so it's very unlikely to give you problems with the minimum amount of care and attention, including a regular service. We recommend you return your watch to us every 3/4 years for a service, so our expert technicians can keep your fine timepiece in the peak of condition. (We recommend that whenever your quartz battery needs changing you consider having the watch serviced at the same time to keep it in perfect working order.)

## **SERVICING & REPAIRS...THE CHRISTOPHER WARD WAY...**

Our innovative approach to servicing and repairing your Christopher Ward watch means that having your watch serviced or repaired doesn't mean months of waiting followed by an exorbitant bill – which is pretty much the experience guaranteed by every other luxury watch brand. We have developed an easy, quick and affordable expert service and repairs programme that doesn't cost the earth and has your watch back where it belongs – on your wrist – in double-quick time.

Visit our website for more details about our 60/60 Guarantee and Service and Repair Programme.



## KEEPING IN TOUCH WITH CHRISTOPHER WARD

From small beginnings just a few short years ago (our first workshop was actually a refurbished chicken shed!), Christopher Ward has won a worldwide following for his eponymous watch brand and can justifiably claim to manufacture the most affordable luxury watches in the world.

For many, the philosophy behind the brand, of trying to put luxury watches within the reach of everyone, is as attractive as the watches themselves, as is the very open approach of the business which means that Chris and the team spend a lot of time communicating personally with our customers – many of whom have become friends.

As the owner of a Christopher Ward watch, if ever you need to get hold of us we are at your service. We have listed some useful contact details on the back cover.

There is also always something new going on at our website at **[www.christopherward.co.uk](http://www.christopherward.co.uk)** and, if you haven't already discovered the independent forum dedicated to our brand at **[www.christopherwardforum.com](http://www.christopherwardforum.com)** we would recommend a visit. Informative and fun, it's a great place to hear the unexpurgated view of Christopher Ward of London!

# CHR. WARD

L O N D O N

## HEAD OFFICE

Christopher Ward (London) Limited,  
1 Park Street, Maidenhead,  
Berkshire SL6 1SL United Kingdom  
+44 (0)1628 763040

## CUSTOMER SERVICES

UNITED KINGDOM: +44 (0)844 875 1515  
UNITED STATES OF AMERICA: 1.877.226.8224  
[customerservices@christopherward.co.uk](mailto:customerservices@christopherward.co.uk)  
[technical@christopherward.co.uk](mailto:technical@christopherward.co.uk)

## WEBSITE

[www.christopherward.co.uk](http://www.christopherward.co.uk)  
[www.christopherward-usa.com](http://www.christopherward-usa.com)