

C5 MALVERN AUTOMATIC MKII

OWNER'S HANDBOOK

CHR. WARD
L O N D O N

TIME ON YOUR SIDE...

Your Christopher Ward watch has been designed and engineered by highly talented craftspeople to ensure not only accurate and precise timekeeping but also to bring a real pride of ownership that only luxury items of the highest quality can ever hope to deliver.

You have made an investment, a good one, and the aim of this handbook is to help you make the most of that investment during what I hope will be a lifetime of ownership.

A handwritten signature in black ink, reading 'Chris', with a stylized, flowing script.

Christopher Ward

CONTENTS

C5 MALVERN AUTOMATIC MK II	2-3
TECHNICAL INFORMATION	4-5
OPERATING INSTRUCTIONS	6-13
THE CW360 WATCH CARE PROGRAMME	14-15
GENERAL INFORMATION	16

C5 MALVERN AUTOMATIC MK II

No watch is more closely associated with the Christopher Ward story than the MK I version of this watch.

It was both a landmark for Christopher Ward being one of the first two designs introduced in 2005 as well as for the luxury watch industry which had never before witnessed a watch of such sublime quality being made available at such an accessible price.

Echoes of the original Malvern Automatic are everywhere in the 39mm MK II version, as you might expect. The same embellished automatic movement is visible through the exhibition window on the reverse of the case. The same sapphire crystal protects the dial and the same superb leather straps and bracelets provide a wonderfully comfortable feeling in wear.

The most significant change is the one-piece metal dial.



Subtle elongations to the raised nickel indexes add to the contemporary but timeless appeal of the new design. The Malvern MK II is a worthy successor to its famous predecessor. A new legend in the making.



TECHNICAL INFORMATION

FEATURES

- Swiss made
- *25 or 26 jewel Swiss mechanical movement
- Self-winding automatic movement
- Date indicator
- Convex sapphire crystal with anti-reflective coating
- Water resistant to 5 ATM
- 38 hours power reserve (maximum)
- Transparent case back
- Screw-in crown
- Hand polished stainless steel case with unique serial number
- Incabloc™ anti-shock system

TECHNICAL INFORMATION

Diameter:	39mm
Height:	10.4mm
Calibre:	*ETA 2824-2 or Sellita SW200-1
Vibrations:	28,000 per hour (4 Hz)
Case:	316L stainless steel
Accuracy:	+20/-10 seconds per day
Water Resistance:	5 ATM (50 metres)
Strap:	18mm leather or 316L stainless steel bracelet



OPERATING INSTRUCTIONS

CHR. WARD
LONDON

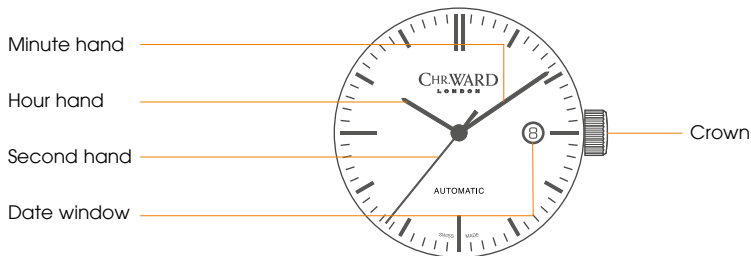


AUTOMATIC

DISPLAY AND CONTROL BUTTONS

The C5 Malvern Automatic MK II model has a maximum power reserve of 38 hours when fully wound. To re-power the watch after a period of non-use, simply unscrew the crown and wind in

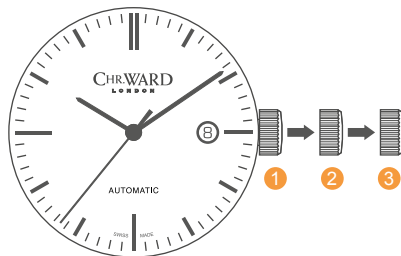
approximately 20 revolutions. Normal wearing will very quickly allow the rotor to start re-powering the watch over time after putting it on your wrist.



SETTING THE TIME/DATE

For a superior water resistance your crown is of the screw-in type. To get to position ① turn the crown anti-clockwise until it releases itself.

- Wind in a clockwise direction to re-power the watch.
- Pull gently into position ②. For rapid date correction, turn in a clockwise direction.
- Pull gently into position ③. This position is used for handsetting, and stopping of the second hand. For precise time setting it is recommended to pass beyond the desired minute and to set the hand backwards.
- Push the crown back into position ① and screw the crown in a clockwise direction in order to maintain water resistance. The crown should sit flush to the case.



PLEASE NOTE: The date cannot be changed during the date changing phase between 21.00 hrs and 02.00 hrs as the watch gearing will already be aligning itself to change the date. The crown should always be screwed in after adjustment, and it is best to do so from position ③ to avoid advancing beyond the desired date.





WATER RESISTANCE

Although your watch has been through vigorous static pressure testing, it is worth remembering that there are many variables that can affect the water resistance of your watch.

For instance, arm movements during swimming and the sudden impact of diving and water sports will drastically increase the pressure the watch is under. Wearing your watch in the bath, shower, or sauna can also have an effect as a rapid increase in temperature can cause seals to expand and in extreme cases, malfunction or create condensation.

For these reasons, the water resistance rating of your watch (as shown) **should only ever be considered a guideline** and we strongly recommend they are always adhered to.



1 ATM (10 METRES)

Safe to wear your watch while washing your hands with tap water.



3 ATM (30 METRES)

Washing your car and/or general hose pipe usage.



5 ATM (50 METRES)

Water resistant to most household shower units.



10 ATM (100 METRES)

Safe to use while snorkelling in open water.



30 ATM (300 METRES)

Ideal for experienced divers and those practising scuba-diving.



50 ATM (500 METRES)

Professional divers, experiencing prolonged exposure underwater.



100 ATM (1000 METRES)

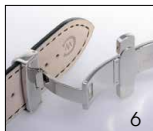
Professional deep sea diving.

STRAPS & BRACELETS

As you would expect, we place as much emphasis on the quality of our straps and bracelets as we do our watches. We only use the finest leathers for our straps and our premium alligator straps are all ethically sourced from CITES approved farms in Louisiana.

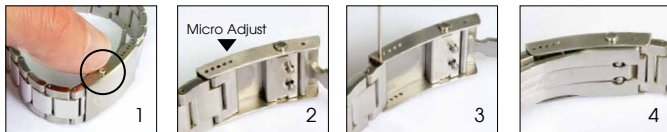
Similarly, we only use the finest metals in the construction of our bracelets, all of which are precision engineered for durability, efficiency and comfort. The following guidelines explain how easy it is to use and adjust your Christopher Ward strap or bracelet.

LEATHER STRAP WITH EASY RELEASE BUTTERFLY CLASP



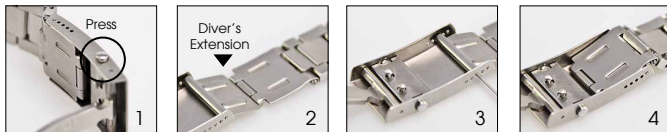
1. Locate the clasp
2. Press the quick-release
3. Pull open the clasp
4. Locate the opening
5. Thread strap through
6. Secure the strap
7. Close the clasp
8. Complete

BRACELET WITH MICRO-ADJUSTMENT



1. Press to release
2. Expand adjustment
3. Adjust pin position
4. Close the clasp

DIVER'S EXTENSION (WHERE APPLICABLE)



1. Press to release
2. Expand adjustment
3. Adjust pin position
4. Close the clasp

QUICK-RELEASE PINS (WHERE APPLICABLE)



1. Locate the release
2. Drag button back
3. Detach strap
4. Align holes to click a new strap in position

THE CW360 WATCH CARE PROGRAMME

Your watch is constructed from the finest components and materials available including one of Switzerland's finest automatic movements. As with all watches of this quality, with the right care and attention, your new Christopher Ward watch has the potential to become an heirloom piece giving further joy to future generations. It's for this reason we have created our industry leading approach to after-sales care which we term the CW360 Watch care Programme.

Christopher Ward's CW360 Watch Care Programme is designed to deliver you complete peace of mind and the best support possible throughout the lifetime of your ownership. The programme has three key elements:

1 60 DAY FREE RETURNS

Our success depends on you being completely happy with your new Christopher Ward watch. If for any reason you aren't, you have up to 60 Days to return your watch, absolutely free of charge, and receive a replacement or full refund by return – and without any quibbles from us!

2 FREE 5 YEAR MOVEMENT GUARANTEE

Your watch, at its heart, has a top quality precision engineered Swiss movement – so it's very unlikely to give you problems with the minimum amount of care and attention, including a regular service. We recommend you return your watch to us every 3/4 years for a service, so our expert technicians can keep your fine timepiece in the peak of condition. (We recommend that whenever your quartz battery needs changing you consider having the watch serviced at the same time to keep it in perfect working order.)

3 SERVICING & REPAIRS...THE CHRISTOPHER WARD WAY...

Our innovative approach to servicing and repairing your Christopher Ward watch means that having your watch serviced or repaired doesn't mean months of waiting followed by an exorbitant bill – which is pretty much the experience guaranteed by every other luxury watch brand. We have developed an easy, quick and affordable expert service and repairs programme that doesn't cost the earth and has your watch back where it belongs – on your wrist – in double-quick time.

Visit our website for more details about the CW360 Watch Care Programme

KEEPING IN TOUCH WITH CHRISTOPHER WARD

From small beginnings just a few short years ago (our first workshop was actually a refurbished chicken shed!), Christopher Ward has won a worldwide following for his eponymous watch brand and can justifiably claim to manufacture the most affordable luxury watches in the world.

For many, the philosophy behind the brand, of trying to put luxury watches within the reach of everyone, is as attractive as the watches themselves, as is the very open approach of the business which means that Chris and the team spend a lot of time communicating personally with our customers – many of whom have become friends.

As the owner of a Christopher Ward watch, if ever you need to get hold of us we are at your service. We have listed some useful contact details on the back cover.

There is also always something new going on at our website at **www.christopherward.co.uk** and, if you haven't already discovered the independent forum dedicated to our brand at **www.christopherwardforum.com** we would recommend a visit. Informative and fun, it's a great place to hear the unexpurgated view of Christopher Ward of London!

CHR. WARD

L O N D O N

CERTIFICATE OF AUTHENTICITY

MODEL

SERIAL NUMBER

DATE

CHECKED

christopherward.co.uk

Christopher Ward (London) Limited, 1 Park Street, Maidenhead
Berkshire SL6 1SL United Kingdom

CHR. WARD

L O N D O N

HEAD OFFICE

Christopher Ward (London) Limited,
1 Park Street, Maidenhead,
Berkshire SL6 1SL United Kingdom
+44 (0)1628 763040

CUSTOMER SERVICES

UNITED KINGDOM: +44 (0)844 875 1515
UNITED STATES OF AMERICA: 1.877.226.8224
customerservices@christopherward.co.uk
technical@christopherward.co.uk

WEBSITE

www.christopherward.co.uk
www.christopherward-usa.com