



C60 Sapphire Edge

Owner's handbook



Congratulations on the purchase of your C60 Sapphire Edge.

Carrying the DNA of three iconic CW timepieces, the Edge is a love letter to the versatility, durability and beauty of pure sapphire crystal.

Take the watch out. See how the sapphire dial – machined to a thickness of 0.6m – lets you see the Sellita SW300 calibre inside. Turn the piece over, and again, you'll see the movement, this time through a sapphire case back.

From the luminous strap to the lustrous sapphire bezel, your C60 Sapphire Edge is both a beautiful object and a professional diving instrument in its own right.

Wear it in good health!

 Christopher
Ward



Features

- Swiss made
- 25 jewel self-winding mechanical movement
- 56-hour power reserve
- Christopher Ward "Colimaçoné" finish on the rotor
- Brushed and polished Light-catcher™ stainless steel case
- Unidirectional sapphire bezel
- Central hacking seconds hand
- Screw-down crown stamped with twin-flag motif
- Anti-reflective sapphire crystal
- Sapphire crystal dial
- Exhibition case back with blue gradient sapphire crystal
- Unique engraved serial number
- Signature Trident counter-balance on seconds hand
- Sapphire bezel insert
- Luminous bezel markers
- Super-LumiNova® Grade X1 BL C1-filled hands and indexes

Technical details

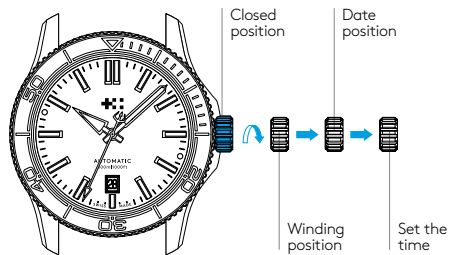
Calibre:	Sellita SW300-1
Case:	Stainless steel
Diameter:	42 mm
Height:	10.70mm
Weight:	70.87g
Water resistance:	30 ATM (300m)
Vibrations:	28,800 p/hr (4Hz)
Timing tolerance:	-20/+20 sec/day
Lug to lug:	49.32 mm
Strap width:	22 mm
Power reserve:	56 hours
Jewels:	25 pcs

Setting the time and date

Unscrew the crown* anti-clockwise from the case to position 2 for winding in power. Wind in a anti-clockwise direction to re-power the watch.

To set the date pull gently into position 3 and turn in a clockwise direction.

Pull gently into position 4. This position is used for handseting and stopping of the seconds hand. For precise time setting it is recommended to pass beyond the desired minute and to set the hand backwards.



*The screw-down crown should sit flush to the case (position 1) in order to maintain water resistance.

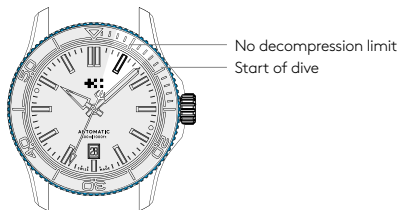
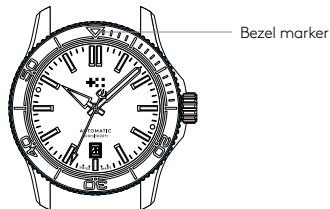
Date correction should not be carried out between 20.00 hr and 02.00 hr as the watch gearing will already be aligning itself to change the date.

Diving with your watch

If using the bezel for a dive and let's say the recognised maximum "no-stop time" is 55 minutes, then in this example (shown right) the time at the surface immediately before the dive is 10.08am. However the bezel marker is at the 12.00 hr position.

Move the bezel marker anti-clockwise so that it aligns with the 8 minute position.

You can now read that the 55 minute no decompression limit will occur at 3 minutes past the next hour.

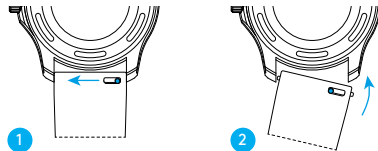


It is always useful and best practice to make a note on a dive slate before entering the water and to carry a set of dive tables should the dive plan change during the course of a dive. A safety stop for 3 to 5 minutes at 15ft is recommended at the end of all dives. A safety stop for 3 minutes at 15ft is required any time you come within 3 pressure groups of a no decompression limit, and for any dive to a depth of 100ft or deeper.

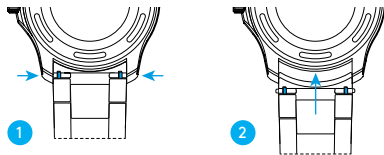
Using the quick-release pins

- 1 Locate the quick-release pins on your strap or bracelet. Pinch the pins inwards to detach.
- 2 To reattach your strap or bracelet, pinch the pins inwards, and align the spring bars so they click securely into the lug holes on each side.

Detaching and reattaching a strap

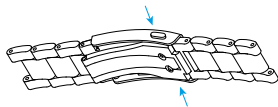


Detaching and reattaching a bracelet

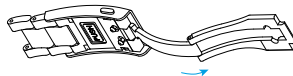


Using the micro adjustment on your bracelet

- 1 Press buttons to release.
- 2 Pull open the clasp.
- 3 There are three micro adjustment positions, which allows for a maximum extension of 6mm. To extend, push the button to unlock and simultaneously pull on the bracelet into the desired position.
- 4 To shorten, simply push the button and then slide the bracelet back into the clasp.



1



2



3



4

Water resistance

Although your watch has been through vigorous static pressure testing, it is worth remembering that there are many variables that can affect the water resistance of your watch. For instance, arm movements during swimming and the sudden impact of diving and water sports will drastically increase the pressure the watch is under.

Wearing your watch in the bath, shower, or sauna can also have an effect as a rapid increase in temperature can cause seals to expand and in extreme cases, malfunction or create condensation.

For these reasons, the water resistance rating of your watch (as shown) should only ever be considered a guideline and we strongly recommend they are always adhered to.

60 ATM (600 metres)

Professional divers experiencing prolonged exposure underwater





5 year movement guarantee

Your watch is powered by a precision-engineered Swiss movement. In the rare event that your movement develops a fault within five years we'll repair it for free under warranty. Your watch will need to be sent to us for a full diagnosis before processing a repair under warranty. You'll always be informed before carrying out any work.

The Guarantee does not cover accidental damage. Any service or repair by a third-party retailer will void your Guarantee. For more details, please visit our website.

Service and repairs

Our approach to service and repairs is about uncompromised quality and great value for money. The process, led by our expert technicians, won't cost the earth and will have the watch back on your wrist in reasonable time. We recommend you service your watch every three to four years to keep it in peak condition.

60-day free returns

We hope you'll be happy with your watch from the moment it arrives. However, if that's not the case you have 60 days to return it in perfect, unused condition (with all its accompanying paperwork) in order to receive a replacement or full refund.



S24-071

SWISS MADE

S-STEEL - 30 ATM

CHRISTOPHER WARD





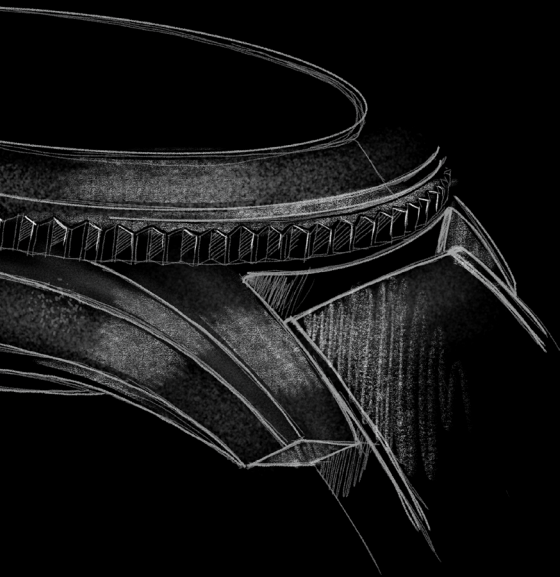
A Christopher Ward watch brings idiosyncratic English design together with Swiss watchmaking expertise. We obsessively oversee every part of the process – and only when we're delighted with each element of the watch, will we sell it. Something you'll appreciate whenever you wear it.

Swiss made

Every Christopher Ward is built by hand in Switzerland, the epicentre of fine watchmaking, which offers an unrivalled pool of talent, enabling us to create watches and movements that rival the best.

It's here that our world-renowned 'JJ Calibres' movements were created, bringing haute horology to a new, wider audience of watch-lovers. And it's in the spotless rooms – and on those rows of white tables – that we created Calibre SH21, the first commercially viable movement from a British brand in 50 years.





English design

Watchmaking can be conservative. A little too conservative for our taste. From the smooth lines of our iconic Light-catcher™ case to the precision engraving of our twin flags logo on a movement's rotor arm, our approach to design is both bold and detailed. We're careful to play by the rule book but occasionally like to rip it up as well.

England is the nation that gave the world the Aston Martin and the Sex Pistols. The design of our watches reflects both sides of our nature. Often at the same time.

Innovation

Mechanical watchmaking may be a traditional discipline, but this never stops us from pushing – and breaking – its boundaries.

Which is why we engineered a perpetual moonphase movement that's accurate for 128 years. Re-created the first super compressor mechanism in 50 years. And launched Calibre SH21, the first in-house British movement in decades.

Innovation is as the core of what we do. And our timepieces show this.





Your Christopher Ward watch is covered by our 60|60 Guarantee.

This means that you can return it 60 days after purchase and receive a full refund (as long as the watch is in perfect condition).

And if your watch develops a mechanical fault within five years (60 months), we'll repair it for free. Please use the warranty card opposite to arrange this.

If you ever need to get hold of us we're at your service. And if you'd like to explore the CW world more, you can follow us on social media.



ChristopherWardLondon



@chriswardlondon