

C12 Loco

Owner's handbook



Congratulations on the purchase of your C12 Loco.

A watch that doesn't just tell the time, but which demonstrates the dynamism and beauty of *haute horlogerie*.

The Loco began with a doodle by our technical director. Two years later, after endless experimentation (and many late nights), it's finally ready to be worn.

From the oscillations of the visible balance wheel to the view of our CW-003 movement through the clear case back, this is a timepiece that begs to be studied at leisure.

But first, there's the small matter of strapping it on and taking it out in the world.

Wear it in good health!

 **Christopher  
Ward**



## Features

- Swiss made
- Handwound mechanical in-house Calibre CW-003
- 144-hour power reserve
- Dial-side view of the exposed free-sprung balance and escapement
- Brushed, sandblasted and polished stainless steel case
- Exhibition caseback
- Brushed and polished hands
- Anti-reflective front and rear sapphire crystal
- Multi-layer dial
- Floating sapphire dial for time display
- Top-brushed indexes with diamond polished facets
- Super-LumiNova® Grade X1 BL C1 filled hands and indexes

## Technical details

Calibre	CW-003
Case	Stainless steel
Diameter	41mm
Height	13.70mm
Weight	69g
Water resistance	3 ATM (30m)
Vibrations	28,800 p/hr (4Hz)
Timing tolerance	-0/+7
Lug to lug	47.50mm
Strap width	25mm integrated
Power Reserve	144 hours

## Setting the time

First, unscrew the crown\* anti-clockwise from the case to Position 2. Then, wind in a clockwise direction to power the watch.

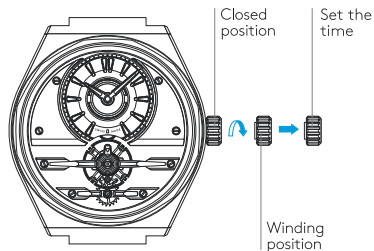
To wind the movement from empty to full power turn the crown fully 95 times.

When fully wound, your C12 Loco has a maximum power reserve of 144 hours.

Pull the crown gently into Position 3. This position is used for handsetting and the stopping of the seconds hand.

For precise time setting, we recommend passing beyond the desired minute and setting the hand backwards.

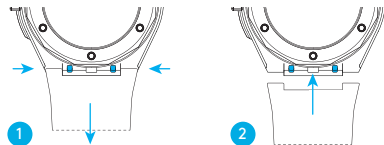
\*The screw-down crown should sit flush to the case (position 1) in order to maintain water resistance.



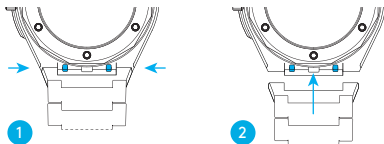
## Using the quick-release pins

- 1 Locate the quick-release pins on the underside of your case. Pinch the pins inwards to detach.
- 2 To reattach your strap or bracelet, pinch the pins inwards, and align the spring bars so they click securely into the lug holes on either side of the strap or bracelet.

## Detaching and reattaching a strap



## Detaching and reattaching a bracelet

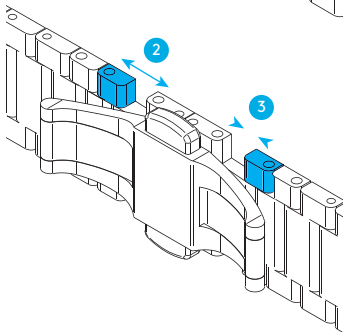
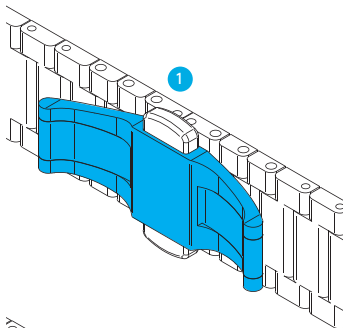


## Using the micro adjustment on your bracelet

- 1 Ensure butterfly clasp is closed.
- 2 Pull firmly on either side of the bracelet to open micro adjust.

There is two 1.5mm micro adjust positions on either side of the butterfly clasp allowing for a maximum extension of 3mm. To extend simply pull gently on one, or both sides of the bracelet clasp depending on the desired amount of extension.

- 3 To shorten simply push the bracelet back towards the clasp.



## Water resistance

Although your watch has been through vigorous static pressure testing, it is worth remembering that there are many variables that can affect the water resistance of your watch. For instance, arm movements during swimming and the sudden impact of diving and water sports will drastically increase the pressure the watch is under.

Wearing your watch in the bath, shower, or sauna can also have an effect as a rapid increase in temperature can cause seals to expand and in extreme cases, malfunction or create condensation.

For these reasons, the water resistance rating of your watch (as shown) should only ever be considered a guideline and we strongly recommend they are always adhered to.

### 3 ATM (30 metres)

Washing your car and/or  
general hose pipe usage





### **5 year movement guarantee**

Your watch is powered by a precision-engineered Swiss movement. In the rare event that your movement develops a fault within five years we'll repair it for free under warranty. Your watch will need to be sent to us for a full diagnosis before processing a repair under warranty. You'll always be informed before carrying out any work.

The Guarantee does not cover accidental damage. Any service or repair by a third-party retailer will void your Guarantee. For more details, please visit our website.

### **Service and repairs**

Our approach to service and repairs is about uncompromised quality and great value for money. The process, led by our expert technicians, won't cost the earth and will have the watch back on your wrist in reasonable time. We recommend you service your watch every three to four years to keep it in peak condition.

### **60-day free returns**

We hope you'll be happy with your watch from the moment it arrives. However, if that's not the case you have 60 days to return it in perfect, unused condition (with all its accompanying paperwork) in order to receive a replacement or full refund.



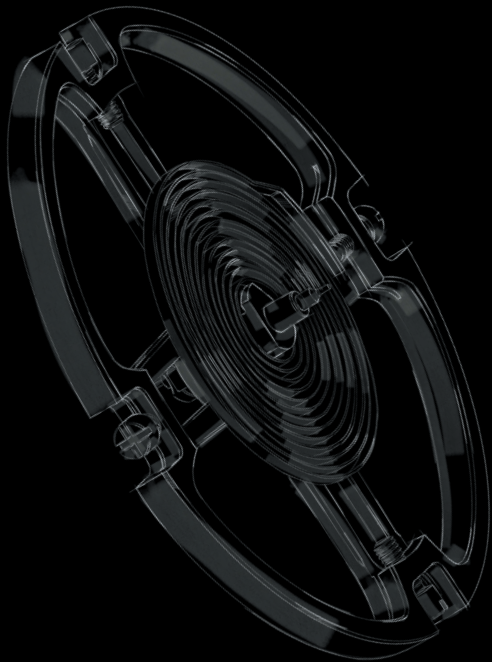
A Christopher Ward watch brings idiosyncratic English design together with Swiss watchmaking expertise. We obsessively oversee every part of the process – and only when we're delighted with each element of the watch, will we sell it. Something you'll appreciate whenever you wear it.

## Swiss made

Every Christopher Ward is built by hand in Switzerland, the epicentre of fine watchmaking, which offers an unrivalled pool of talent, enabling us to create watches and movements that rival the best.

It's here that our world-renowned 'JJ Calibres' movements were created, bringing haute horology to a new, wider audience of watch-lovers. And it's in the spotless rooms – and on those rows of white tables – that we created Calibre SH21, the first commercially viable movement from a British brand in 50 years.





## English design

Watchmaking can be conservative. A little too conservative for our taste. From the smooth lines of our iconic Light-catcher™ case to the precision engraving of our twin flags logo on a movement's rotor arm, our approach to design is both bold and detailed. We're careful to play by the rule book but occasionally like to rip it up as well.

England is the nation that gave the world the Aston Martin and the Sex Pistols. The design of our watches reflects both sides of our nature. Often at the same time.

## Innovation

Mechanical watchmaking may be a traditional discipline, but this never stops us from pushing – and breaking – its boundaries.

Which is why we engineered a perpetual moonphase movement that's accurate for 128 years. Re-created the first super compressor mechanism in 50 years. And launched Calibre SH21, the first in-house British movement in decades.

Innovation is as the core of what we do. And our timepieces show this.





Your Christopher Ward watch is covered by our 60|60 Guarantee.

This means that you can return it 60 days after purchase and receive a full refund (as long as the watch is in perfect condition).

And if your watch develops a mechanical fault within five years (60 months), we'll repair it for free. Please use the warranty card opposite to arrange this.

If you ever need to get hold of us we're at your service. And if you'd like to explore the CW world more, you can follow us on social media.



ChristopherWardLondon



@chriswardlondon