

C60 Apex Limited Edition

Owner's Handbook



Time on your side

Your Christopher Ward watch has been designed in Britain and engineered in Switzerland by highly talented craftspeople. This ensures not only accurate and precise timekeeping, but also brings a real pride of ownership that only watches of the highest quality standards can hope to deliver.

You have made an investment, a good one, and the aim of this manual is to help you make the most of that investment in what we hope will be a lifetime of ownership.

Chris, Mike and Peter
(Co-founders)



C60 Apex Limited Edition

On July 2, 2014, the Christopher Ward team descended upon London's Charlotte Street Hotel to unleash a development that would send shockwaves rippling throughout the Swiss watch industry.

That development was Calibre SH21, CW's in-house chronometer complete with 120-hour power reserve. Not only a feat of engineering, it doubled as proof that a small British watchmaker could innovate just as much as brands far larger, older and wealthier. Five years on from when CW's three co-founders dropping that particular horological depth charge, the new C60 Apex Limited Edition is the ultimate celebration of Calibre SH21's half-decade anniversary.

The second CW Apex release, this 100-piece Limited Edition marks the first time the series' architectural aesthetic has appeared in dive form.

Thanks to our partners at Swiss skeletonised watch experts Armin Strom, both its front and back have been stripped away to allow as much of SH21 to be admired as possible; with an anodised orange rotor and detailed bridge present, such engineering prowess means the Apex also marks the debut of an exhibition caseback in a C60 (although it still remains water resistant to 300m). A power reserve indicator on the Apex's dial also enables its wearer to track what remains of the 120 hours of power stored within SH21's twin barrels once fully wound.

A technical colossus, the C60 Apex Limited Edition shows just what Christopher Ward's Anglo-Swiss can accomplish when working together to create the best watch possible at this level. But then again for a model whose title refers to the pinnacle of achievement, what else would you expect?

Features

- Swiss made
- Limited edition of 100 pieces
- 33 jewel self-winding chronometer with power reserve complication
- 120 hour power reserve
- Hour, minute, central seconds, date
- Skeletonised bridge and decorated barrels, with anodised aluminium and tungsten rotor
- Brushed and polished marine-grade stainless steel case
- Unidirectional ZrO₂ ceramic bezel
- Integrated automatic helium release valve
- Anti-reflective flat sapphire crystal
- Semi-open dial with circular brushed Ruthenium ring, engraved Ruthenium plate and orange anodised aluminium bridge
- Bevelled matte blue outer ring with white minute markers
- Blue power reserve indicator ring with orange numerals and circular brushed rhodium outer ring
- Altimeter-inspired date wheel
- Super-LumiNova Grade® X1 GL C1 hands, indexes and bezel
- Top-brushed indexes with diamond polished facets
- Sandblasted and polished hands
- Signature Trident counterbalance on seconds hand
- Exhibition backplate with unique engraved serial number

Technical Information

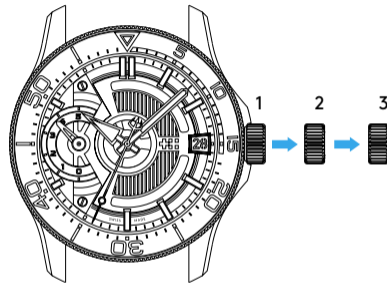
Calibre	SH21 – automatic with power reserve complication
Case	316L stainless steel
Diameter	42mm
Height	16.35mm
Lug to lug	54mm
Weight	99g
Water resistance	30 ATM (300 metres)
Vibrations	28,800 per hour (4Hz)
Timing tolerance	-4/+6 seconds per day
Strap width	22mm



Setting the time and date

The crown should sit flush to the case (position **1**) in order to maintain water resistance.

- To re-power the watch after a period of non-use, simply wind the crown in a clockwise direction. Take care not to overwind the crown past the point of resistance as it will damage the movement.
- For rapid date correction pull gently into position **2** and turn in an anti-clockwise direction.
- For setting the time pull gently into position **3** and turn anti-clockwise to advance the time. For precise time setting it is recommended to pass beyond the desired minute and to set the hand backwards. Push the crown back to position **1**.



1. Manual winding
2. Date setting
3. Time setting

PLEASE NOTE: Date correction should not be carried out between 20.00 hr and 02.00 hr as the watch gearing will already be aligning itself to change the date. The crown should always be pushed in after adjustment, and it is best to do so from position **3** to avoid advancing beyond the desired date.



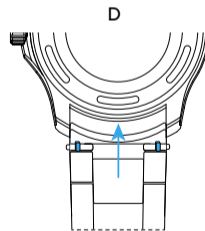
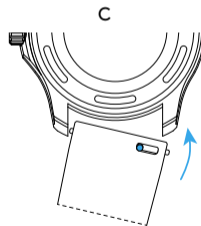
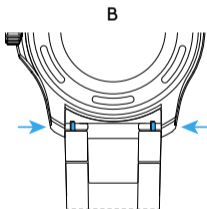
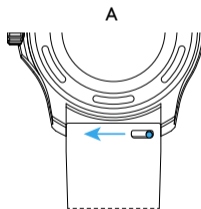
Straps and bracelets

As you would expect, we place as much emphasis on the quality of our straps and bracelets as we do our watches. We only use the finest materials in our straps, with quick-release pins also included for your convenience.

The following guidelines explain how easy it is to use, adjust and replace your Christopher Ward strap or bracelet.

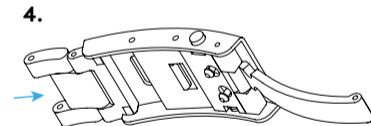
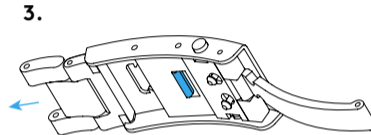
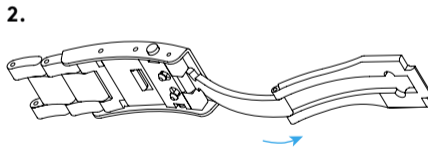
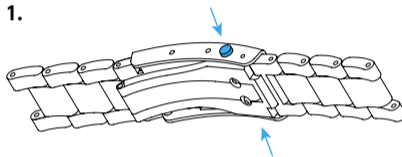
Using the quick-release pins on your strap/bracelet

1. Locate the quick-release pin (or pins) on your strap (A) or bracelet (B). Pull the pin(s) inwards to detach.
2. To reattach your strap (C) or bracelet (D), pull the pin(s) inwards, and align the spring bars so that they click securely into the lug holes on each side.



How to use the micro adjustment on your bracelet

1. Press buttons to release
2. Pull open the clasp
3. There are five micro adjustment positions, which allows for a maximum extension of 8.4mm. To extend, pull the lever to unlock and simultaneously pull on the bracelet into the desired position.
4. To shorten, simply push the bracelet back into the clasp.





Water resistance

Although your watch has been through vigorous static pressure testing, it is worth remembering that there are many variables that can affect the water resistance of your watch. For instance, arm movements during swimming and the sudden impact of diving and water sports will drastically increase the pressure the watch is under.

Wearing your watch in the bath, shower, or sauna can also have an effect as a rapid increase in temperature can cause seals to expand and in extreme cases, malfunction or create condensation.

For these reasons, the water resistance rating of your watch (as shown) should only ever be considered a guideline and we strongly recommend they are always adhered to.

**1 ATM (10 metres)**

Safe to wear your watch while washing your hands with tap water

**15 ATM (150 metres)**

Safe to use while snorkelling in open water

**100 ATM (1000 metres)**

Professional deep sea diving

**3 ATM (30 metres)**

Washing your car and/or general hose pipe usage

**30 ATM (300 metres)**

Ideal for experienced divers and those practising scuba-diving

**5 ATM (50 metres)**

Water resistant to most household shower units

**60 ATM (600 metres)**

Professional divers, experiencing prolonged exposure underwater



60|60 Guarantee

Your watch is constructed from the finest components and materials available including one of Switzerland's finest mechanical movements. As with all watches of this quality, with the right care and attention, your new Christopher Ward watch has the potential to become an heirloom piece giving further joy to future generations.

It's for this reason we have created our industry leading approach to after-sales care, starting with our famous 60|60 Guarantee which remains the most comprehensive guarantee in the world of watchmaking.

60 Day Free Returns

Our success depends on you being completely happy with your new Christopher Ward watch. You have up to 60 days from despatch to return your watch, with free shipping, and receive a replacement or full refund, for which the watch must be in perfect, unworn condition and accompanied by all its original packaging and paperwork.

60 Month Movement Guarantee

Your watch has a top-quality precision engineered Swiss movement – but if it develops a movement fault within 5 years, and has been serviced by us at the recommended interval (within a maximum of 4 years from date of despatch), we will repair it for free under warranty. Not all mechanical problems or quartz battery replacements are

considered movement faults and your watch will need to be sent to us for diagnosis and service history checks, before processing a repair under warranty.

Servicing and Repairs - the Christopher Ward way...

Our innovative approach to service and repair means that having your watch attended to doesn't mean months of waiting followed by an exorbitant bill. We have developed a quick, easy and affordable expert service and repairs process that doesn't cost the earth and has the watch back where it belongs – on your wrist – in reasonable time.

We recommend you service your watch at intervals of 3-4 years to keep it in peak condition and to maintain your **60 month guarantee**. If your watch develops an issue within 60 months of despatch, we will first check its service history before progressing a repair. If you have not had your watch serviced at the recommended interval, we will not cover the cost of the repair under warranty, and will recommend a maintenance service in addition to any repair work due.

christopherward.co.uk/cservices/60-60-guarantee

Keeping in touch with Christopher Ward

From small beginnings just 15 years ago (our first workshop was actually a refurbished chicken shed!), Christopher Ward has won a worldwide following and can justifiably claim to manufacture the most affordable luxury watches in the world. For many, the philosophy behind the brand, of trying to put luxury watches within the reach of everyone, is as smart as the watches themselves. The very open approach of the business sees Chris, Mike and Peter, as well as the rest of the team, spending lots of time communicating

personally with customers – listening to feedback which helps us continually improve as we grow. As the owner of a Christopher Ward watch, if you ever need to get hold of us we are at your service. There is always something new on our website, across our social media communities and on the Christopher Ward Forum – informative and fun, these are the best places to join the conversation about the latest new releases, news and offers in the world of Christopher Ward.

Head Office

1 Park Street, Maidenhead,
Berkshire SL6 1SL
United Kingdom

Customer Services

UK: +44 (0)1628 763040

USA: 1.877.226.8224

customerservices@christopherward.co.uk

technical@christopherward.co.uk

christopherward.co.uk