



# C65 AM GT Limited Edition

Owner's Handbook

 Christopher  
Ward

## Time on your side

Your Christopher Ward watch has been designed in Britain and engineered in Switzerland by highly talented craftspeople. This ensures not only accurate and precise timekeeping, but also brings a real pride of ownership that only watches of the highest quality standards can hope to deliver.

You have made an investment, a good one, and the aim of this manual is to help you make the most of that investment in what we hope will be a lifetime of ownership.

Mike France  
CEO & co-founder



### C65 AM GT Limited Edition

When the difference between victory and defeat is milliseconds, accuracy is vital. That's why motorsport has always been at the forefront of timing technology – something that's encapsulated by the 'chronograph': a timepiece that combines timekeeping with stopwatch complications.

The golden age of the racing chronograph stretched between the 1950s and '70s. And it's this period the C65 AM GT Limited Edition celebrates.

The first thing you'll notice is the beautiful 41mm dial. Replacing the traditional '12-hour' design with a speedometer aesthetic influenced by the dashboard of the Aston Martin DB4 Zagato, the dial also carries the DNA of two earlier Christopher Ward chronographs: the C9 DB4 '1 VEV' and C9 AM GT.

Powered by the ETA 251.264 quartz movement, there's a wealth of timing options available, from the centre-stop seconds function to the 60-minute and 12-hour counters, plus the 1/10 seconds register. There's also a tachymeter bezel to calculate the speed of passing vehicles at the track.

All of this is possible thanks to the COSC-certified ETA 251.264, one of the most accurate quartz movements ever created, which boasts a tolerance of just -10/+10 seconds per year (0.027 seconds a day). And its thermo-compensated structure means extreme heat won't affect its accuracy either.

With one foot in the past and one placed firmly in contemporary watchmaking, the C65 AM GT Limited Edition is the perfect watch for those who like retro-chic backed up by the technical advances of today.

## Features

- Limited edition of 350 pieces
- Swiss made
- 72-month power reserve
- 27 jewel quartz chronograph chronometer
- Hour, minute, small second, date, centre stop second (1/1 sec), 60 minute counter, 12 hours counter, tenths second counter
- 316L stainless steel case
- Aluminium bezel with 5 minute markers
- Tri-compax dial layout
- Super-LumiNova® Grade X1 GL C1-filled hands and numerals
- Anti-reflective flat sapphire crystal
- Screw-in crown
- Deep-stamped screw-down backplate with unique engraved serial number
- Eco-friendly luxury presentation case and owner's handbook

## Technical Information

Calibre	<b>ETA 251.264 BD PRD (PreciDrive and PowerDrive)</b>
Case	<b>316L stainless steel</b>
Diameter	<b>41mm</b>
Height	<b>12.2mm</b>
Lug to lug	<b>47.1mm</b>
Weight	<b>75g</b>
Water resistance	<b>15 ATM (150 metres)</b>
Timing tolerance	<b>-10/+10 seconds per year</b>
Strap width	<b>22mm</b>



## Setting the time and date

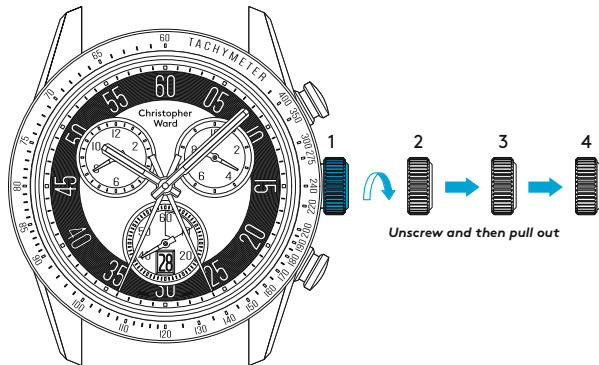
6

For a superior water resistance your crown is of the screw-in type. The crown should sit flush to the case (position **1**) in order to maintain water resistance.

- First unscrew the crown anti-clockwise from the case to position **2**.
- To advance or reverse the date, pull out the crown into position **3**. Turn in a clockwise direction to advance the date, anti-clockwise to reverse the date (please note the hour hand will jump in incremental steps). Once the hour hand passes

12 o'clock, the date wheel will jump forwards or backwards based on the direction used. Please note that the date wheel cannot be changed independently.

- Pull gently into position **4**. This position is used for handsetting and stopping of the second hand. For precise time setting it is recommended to pass beyond the desired minute and to set the hand backwards.



1. Crown screw-in position
2. Unscrewed position
3. Date setting
4. Time setting

**PLEASE NOTE:**

*Date correction should not be carried out between 20.00 hr and 02.00 hr as the watch gearing will already be aligning itself to change the date. The crown should always be pushed in after adjustment, and it is best to do so from position **3** to avoid advancing beyond the desired date. You must always ensure the crown is fully tightened before any use in water.*



## Using the chronograph

### START

Press push-button **A** to start timing.

**PLEASE NOTE:** Before starting the time, reset the chronograph hands to their original position. See the Reset section to set the counters to zero.



### STOP

To stop the timing, press push-button **A** once more and read the 12 hour counter, 60 minutes counter, 60 seconds counter and 1/10 second counter. For example: 5 mins, 57 seconds and 7/10 second.



## How to operate your C65 AM GT Limited Edition

### RESTART/STOP

To restart the timing, press push-button **A** again (timing is resumed).

To stop timing press push-button **A** and read the 4 chronograph hands. For example: 3 hours, 20 mins, 3 seconds and 4/10 second.



### RESET

To reset the timing, press push-button **B** (The 4 chronograph hands will be reset to their zero positions).





## Adjusting chronograph hands to zero position

One or several chronograph hands are not in their correct zero positions and have to be adjusted (e.g. following a battery change).

### Adjusting the hour and minutes chronograph hands

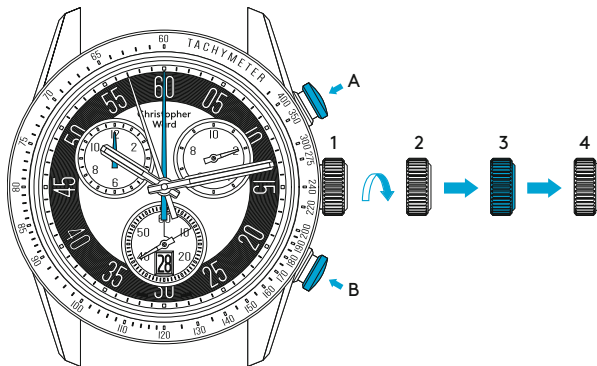
Pull out the crown to position **3**. Press Button **A** to adjust the hour chronograph hand and button **B** to reset the 60 minute counter to zero.

### Adjusting the stop second and tenths seconds hands

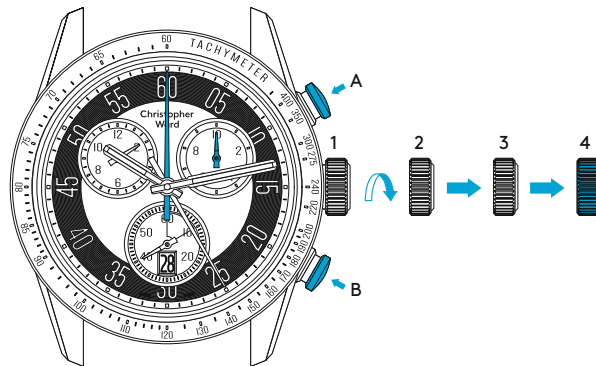
Pull out the crown to position **4**. Push Button **A** to adjust the stop second hand and Button **B** to adjust the tenths seconds hand.

When chronograph hands have been reset, return the crown to position **2** and screw-in to position **1**.

### Adjusting the hour and minutes chronograph hands



### Adjusting the stop second and tenths seconds hands



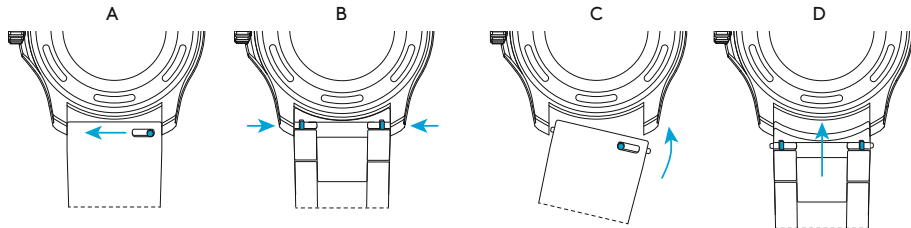
## Straps and bracelets

As you would expect, we place as much emphasis on the quality of our straps and bracelets as we do our watches. We only use the finest materials in our straps, with quick-release pins also included for your convenience.

The following guidelines explain how easy it is to use, adjust and replace your Christopher Ward strap or bracelet.

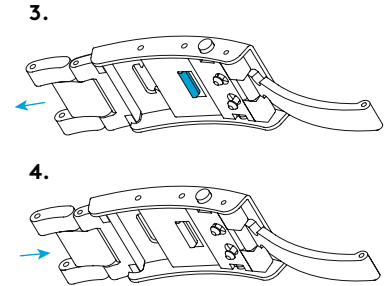
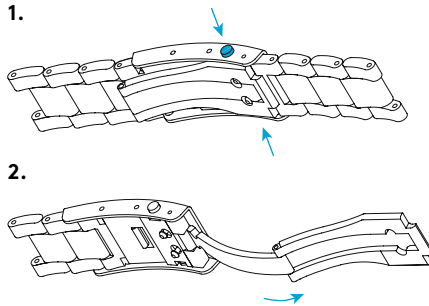
### Using the quick-release pins on your strap/bracelet

1. Locate the quick-release pin (or pins) on your strap (A) or bracelet (B). Pull the pin(s) inwards to detach.
2. To reattach your strap (C) or bracelet (D), pull the pin(s) inwards, and align the spring bars so that they click securely into the lug holes on each side.



## How to use the micro adjustment on your bracelet

1. Press buttons to release.
2. Pull open the clasp.
3. There are five micro adjustment positions, which allows for a maximum extension of 8.4mm. To extend, pull the lever to unlock and simultaneously pull on the bracelet into the desired position.
4. To shorten, simply push the bracelet back into the clasp.



## Water resistance

Although your watch has been through vigorous static pressure testing, it is worth remembering that there are many variables that can affect the water resistance of your watch. For instance, arm movements during swimming and the sudden impact of diving and water sports will drastically increase the pressure the watch is under.

Wearing your watch in the bath, shower, or sauna can also have an effect as a rapid increase in temperature can cause seals to expand and in extreme cases, malfunction or create condensation.

For these reasons, the water resistance rating of your watch (as shown) should only ever be considered a guideline and we strongly recommend they are always adhered to.



**1 ATM (10 metres)**

Safe to wear your watch while washing your hands with tap water



**15 ATM (150 metres)**

Safe to use while snorkelling in open water



**100 ATM (1000 metres)**

Professional deep sea diving



**3 ATM (30 metres)**

Washing your car and/or general hose pipe usage



**30 ATM (300 metres)**

Ideal for experienced divers and those practising scuba-diving



**5 ATM (50 metres)**

Water resistant to most household shower units



**60 ATM (600 metres)**

Professional divers, experiencing prolonged exposure underwater

Our watch care programme

## 60|60 Guarantee

Your watch is constructed from the finest components and materials available including one of Switzerland's finest mechanical movements. As with all watches of this quality, with the right care and attention, your new Christopher Ward watch has the potential to become an heirloom piece giving further joy to future generations.

It's for this reason we have created our industry leading approach to after-sales care, starting with our famous 60|60 Guarantee which remains the most comprehensive guarantee in the world of watchmaking.

### 60 Day Free Returns

Our success depends on you being completely happy with your new Christopher Ward watch. You have up to 60 days from despatch to return your watch, with free shipping, and receive a replacement or full refund, for which the watch must be in perfect, unworn condition and accompanied by all its original packaging and paperwork.

### 60 Month Movement Guarantee

Your watch has a top-quality precision engineered Swiss movement – but if it develops a movement fault within 5 years, and has been serviced by us at the recommended interval (within a maximum of 4 years from date of despatch), we will repair it for free under warranty. Not all mechanical problems or quartz battery replacements are

considered movement faults and your watch will need to be sent to us for diagnosis and service history checks, before processing a repair under warranty.

### **Servicing and Repairs - the Christopher Ward way...**

Our innovative approach to service and repair means that having your watch attended to doesn't mean months of waiting followed by an exorbitant bill. We have developed a quick, easy and affordable expert service and repairs process that doesn't cost the earth and has the watch back where it belongs – on your wrist – in reasonable time.

**We recommend you service your watch at intervals of 3-4 years** to keep it in peak condition and to maintain your **60 month guarantee**. If your watch develops an issue within 60 months of despatch, we will first check its service history before progressing a repair. If you have not had your watch serviced at the recommended interval, we will not cover the cost of the repair under warranty, and will recommend a maintenance service in addition to any repair work due.

### **PLEASE NOTE:**

*The 60|60 Guarantee does not cover accidental damage. Any service or repair by a third party retailer will void your 60|60 Guarantee. For more details, please visit our website.*

Contact us

## Keeping in touch with Christopher Ward

From small beginnings just 15 years ago (our first workshop was actually a refurbished chicken shed!), Christopher Ward has won a worldwide following and can justifiably claim to manufacture the most affordable luxury watches in the world. For many, the philosophy behind the brand, of trying to put luxury watches within the reach of everyone, is as smart as the watches themselves. The very open approach of the business sees Chris, Mike and Peter, as well as the rest of the team, spending lots of time communicating

personally with customers – listening to feedback which helps us continually improve as we grow. As the owner of a Christopher Ward watch, if you ever need to get hold of us we are at your service. There is always something new on our website, across our social media communities and on the Christopher Ward Forum – informative and fun, these are the best places to join the conversation about the latest new releases, news and offers in the world of Christopher Ward.

### **Head office**

1 Park Street, Maidenhead,  
Berkshire SL6 1SL  
United Kingdom

### **Customer support**

UK and EU Tel: +44 (0)1628 763040  
US Tel: +1 (877) 380 2288  
ROW Tel: +1 (877) 380 2288  
[customerservices@christopherward.co.uk](mailto:customerservices@christopherward.co.uk)  
[technical@christopherward.co.uk](mailto:technical@christopherward.co.uk)

**[christopherward.com](http://christopherward.com)**

