

# **C60** TRIDENT COSC 600

OWNER'S HANDBOOK

**CHR. WARD**  
L O N D O N

## TIME ON YOUR SIDE...

Your Christopher Ward watch has been designed and engineered by highly talented craftspeople to ensure not only accurate and precise timekeeping but also to bring a real pride of ownership that only luxury items of the highest quality can ever hope to deliver.

You have made an investment, a good one, and the aim of this handbook is to help you make the most of that investment during what I hope will be a lifetime of ownership.



Christopher Ward

### CONTENTS

TRIDENT_REDEFINED	2-3
TRIDENT_RE-ENGINEERED	4-5
CHOICE_REDEFINED	6-7
C60 TRIDENT COSC 600	8-9
TECHNICAL INFORMATION	10-11
HOW TO OPERATE YOUR TRIDENT COSC 600	12-18
OUR WATCH CARE PROGRAMME	19
KEEPING IN TOUCH	20

## Trident\_redefined

Faced with a challenge, the team at Christopher Ward will usually jump at the task – and reinventing the iconic best-selling Trident Mark I was never going to be easy.

When the Mark I was originally launched back in 2009, the storm of approval was as strong as the tsunamis Poseidon whipped up by stirring his three-pronged spear in the oceans of Greek mythology. The Trident Mark I represented a new value benchmark for premium quality watches and established the then fledgling CW brand as a force to be reckoned with.

With the launch of Trident Mark II came the opportunity to redefine the best-selling Trident Collection. We decided a mere face-lift for our much-loved design wasn't sufficient and instead opted for a painstakingly comprehensive re-engineering, with almost every component of this most iconic of diving timepieces upgraded.

The new Tridents are available in a myriad of colour, price and strap options, with the changes we've wrought redefining not only the watches themselves, but the choice available to the discerning collector.

We're incredibly proud that our new Trident watches, the 38mm and 42mm Pro 600s, 300s, GMTs and of course the flagship COSC, featuring our own in-house Calibre SH21, pay due homage to both their predecessors and some of the most successful watches in history, in a way that is distinctively Christopher Ward.



## Trident\_*re-engineered*

We may have kept the overall look of the original but nearly everything else has been revamped...

### 4 MOVEMENTS

Creating more choice within the range, four movements are utilised in the new Trident Collection.

**ETA 2824-2 / Sellita 200-1:** C60 Trident Pro 600 (38 and 42mm)

**Ronda 515 Quartz:** C60 Trident 300 (38 and 42mm)

**ETA 2893:** C60 Trident GMT 600 (38 and 42mm)

**Calibre SH21:** C60 Trident COSC 600

### RE-ENGINEERED CASE

One of the world's best case manufacturers has helped us rework every aspect of the new case to deliver:

- Sharper architectural lines
- Superior finishes
- Greater water resistance (600 metres in the mechanical versions)
- A remarkable 3 dimensional deep-stamped back-plate

### CERAMIC (ZrO<sub>2</sub>) UNI-DIRECTIONAL BEZEL

Not only is Zirconia ceramic (ZrO<sub>2</sub>) hard and fracture-tough owing to its tetragonal, sub-micron chemical make-up, it's also incredibly glossy and rich to view.

### ENHANCED LUMINOSITY

At 600m down, there is very little visibility – so we've used all-new SuperLuminova™ SLN-T-C1 to fill deep indexes, hands and the 12 o'clock point on the bezel.



## Choice\_redefined

Some entire businesses have been set up on less choice than the current Trident offering – but for Christopher Ward, extensive choice is merely what our customers deserve.

The Trident Collection delivers flexibility, affordability and style, all with a keen eye on our company aim – that of putting premium quality timepieces within the reach of everyone.

With 38mm and 42mm case sizes available, 4 movements (including our own in-house 5 Day Automatic, Calibre SH21), 6 strap styles, 7 models and multiple colour combinations, there is a Trident to fit most wrists, pockets and styles, putting the choice in the hands of the customer to find their perfect Trident.







## C60 TRIDENT COSC 600

With our own in-house, 120 hour power reserve automatic calibre SH21 at its heart, the C60 Trident COSC is marked out immediately as something special.

The engineering excellence of Johannes Jahnke's ground breaking movement is matched by the superbly constructed all-new marine-grade stainless-steel case which will keep Calibre SH21 dry as a bone all the way down to a remarkable depth of 600 metre/2000 feet. Not only that, the zirconia (ZrO<sub>2</sub>) ceramic countdown bezel will be perfectly resistant to whatever knocks and scratches it receives on the way down.

Of course, very few of us will test the C60 Trident COSC 600 to the limits it has been exactly designed to withstand but we will all relish the prospect of owning a watch as beautiful, rare and important.





## TECHNICAL INFORMATION

### FEATURES

- Swiss made
- 31 Jewel in-house self-winding mechanical chronometer by Johannes Jahnke
- COSC certified
- 5 day power reserve
- Date calendar
- Central hacking seconds
- Anti-shock system
- Full tungsten automatic rotor with ball bearings
- Date display at 3 o'clock
- 42mm marine grade, stainless steel case
- Uni-directional ceramic bezel
- Water resistant to 600m/2000ft
- Screw-down deep-stamped 3D back plate
- Screw-in crown
- Unique engraved serial number
- 3.4mm Anti-reflective sapphire crystal

- SuperLuminova™ indices, bezel marker and hands
- Guilloche wave pattern dial
- Signature Trident counter-balance

### TECHNICAL INFORMATION

Diameter:	42mm
Height:	15.55mm
Calibre:	SH21 chronometer
Vibrations:	28,800 per hour (4 Hz)
Timing tolerance:	+6 / -4 seconds per day
Case:	316L Stainless steel
Water Resistance:	60 bar
Bezel:	Zirconia dioxide ceramic
Lume:	SuperLuminova™ SLN-T-C1
Strap:	22mm strap



# HOW TO OPERATE YOUR TRIDENT COSC 600

CHR. WARD  
LONDON

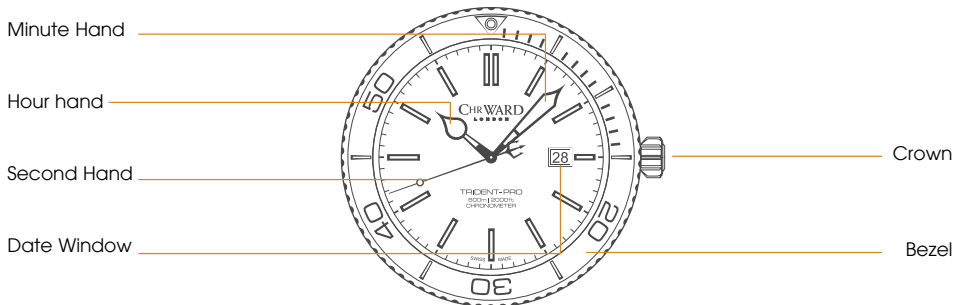
28

TRIDENT-PRO  
600m | 2000ft  
AUTOMATIC

## DISPLAY AND CONTROL BUTTONS

### DISPLAY ELEMENTS

### CONTROL BUTTONS

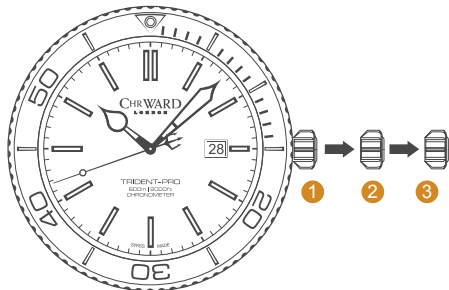


## SETTING THE TIME/DATE

- First unscrew the crown anti-clockwise from the case to position ① for winding in power. Wind in a clockwise direction to re-power the watch.
- Pull gently into position ②. For rapid date correction, turn in a anti-clockwise direction.
- Pull gently into position ③. This position is used for handsetting (clockwise to advance), and stopping of the second hand. For precise time setting it is recommended to pass beyond the desired minute and to set the hand backwards.

**PLEASE NOTE:** Date correction should not be carried out between 20.00 hr and 02.00 hr as the watch gearing will already be aligning itself to change the date. The crown should always be pushed in after adjustment, and it is best to do so from position ③ to avoid advancing beyond the desired date.

**You must always ensure the crown is fully tightened before any use in water.**



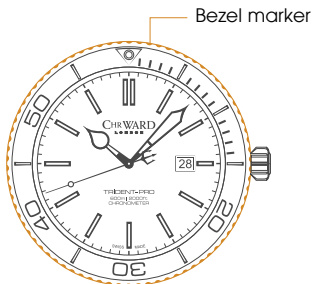
## THE BEZEL

If using the bezel for a dive and let's say the recognised maximum "no-stop time" is 55 minutes, then in this example (shown left) the time at the surface immediately before the dive is 10.08am.

However the bezel marker is at the 12.00 hr position.

- 1 Move the bezel marker anti-clockwise so that it aligns with the 8 minute position.
- 2 You can now read that the 55 minute no decompression limit will occur at 3 minutes past the next hour.

**PLEASE NOTE:** It is always useful and best practice to make a note on a dive slate before entering the water and to carry a set of dive tables should the dive plan change during the course of a dive. A safety stop for 3 to 5 minutes at 15ft is recommended at the end of all dives. A safety stop for 3 minutes at 15ft is required any time you come within 3 pressure groups of a no decompression limit, and for any dive to a depth of 100ft or deeper.





## STRAPS & BRACELETS

As you would expect, we place as much emphasis on the quality of our straps and bracelets as we do our watches. We only use the finest leathers for our straps and our premium alligator straps are all ethically sourced from CITES approved farms in Louisiana.

Similarly, we only use the finest metals in the construction of our bracelets, all of which are precision engineered for durability, efficiency and comfort. The following guidelines explain how easy it is to use and adjust your Christopher Ward strap or bracelet.

### LEATHER STRAP WITH BADER DEPLOYMENT



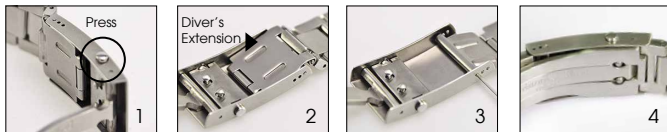
1. Press to release
2. Pull open the clasp
3. Locate the opening and thread the strap through
4. Close the clasp

## BRACELET WITH MICRO-ADJUSTMENT



1. Press to release
2. Locate adjusting pin
3. Adjust pin position
4. Close the clasp

## DIVER'S EXTENSION (WHERE APPLICABLE)



1. Press to release
2. Locate divers extension
3. Expand extension
4. Close the clasp

## WATER RESISTANCE

Although your watch has been through vigorous static pressure testing, it is worth remembering that there are many variables that can affect the water resistance of your watch.

For instance, arm movements during swimming and the sudden impact of diving and water sports will drastically increase the pressure the watch is under. Wearing your watch in the bath, shower, or sauna can also have an effect as a rapid increase in temperature can cause seals to expand and in extreme cases, malfunction or create condensation.

For these reasons, the water resistance rating of your watch (as shown) **should only ever be considered a guideline** and we strongly recommend they are always adhered to.



### **1 BAR (10 METRES)**

Safe to wear your watch while washing your hands with tap water.



### **3 BAR (30 METRES)**

Washing your car and/or general hose pipe usage.



### **5 BAR (50 METRES)**

Water resistant to most household shower units.



### **10 BAR (100 METRES)**

Safe to use while snorkelling in open water.



### **30 BAR (300 METRES)**

Ideal for experienced divers and those practising scuba-diving.



### **60 BAR (600 METRES)**

Professional divers, experiencing prolonged exposure underwater.



### **100 BAR (1000 METRES)**

Professional deep sea diving.

## OUR WATCH CARE PROGRAMME

Your watch is constructed from the finest components and materials available including one of Switzerland's finest mechanical movements. As with all watches of this quality, with the right care and attention, your new Christopher Ward watch has the potential to become an heirloom piece giving further joy to future generations. It's for this reason we have created our industry leading approach to after-sales care, starting with our famous 60/60 Guarantee which remains the most comprehensive guarantee in the world of watchmaking.

Visit our website for more details about our 60/60 Guarantee and Service and Repair Programme.

### 60/60 GUARANTEE

#### 1. 60 DAY FREE RETURNS

Our success depends on you being completely happy with your new Christopher Ward watch. You have up to 60 days to return your watch, absolutely free of charge, and receive a replacement or full refund by return – so long as it has not been worn and is returned in box-perfect condition.

#### 2. 60 MONTH MOVEMENT GUARANTEE

Your watch, at its heart, has a top quality precision engineered Swiss movement – so it's very unlikely to give you problems with the minimum amount of care and attention, including a regular service. We recommend you return your watch to us every 3/4 years for a service, so our expert technicians can keep your fine timepiece in peak condition.

### SERVICING & REPAIRS...THE CHRISTOPHER WARD WAY...

Our innovative approach to servicing and repairing your Christopher Ward watch means that having your watch serviced or repaired doesn't mean months of waiting followed by an exorbitant bill – which is more or less the experience guaranteed by every other luxury watch brand. We have developed an easy, quick and affordable expert service and repairs programme that doesn't cost the earth and has your watch back where it belongs – on your wrist – in double-quick time.

## KEEPING IN TOUCH WITH CHRISTOPHER WARD

From small beginnings just a few short years ago (our first workshop was actually a refurbished chicken shed!), Christopher Ward has won a worldwide following for his eponymous watch brand and can justifiably claim to manufacture the most affordable luxury watches in the world.

For many, the philosophy behind the brand, of trying to put luxury watches within the reach of everyone, is as attractive as the watches themselves, as is the very open approach of the business which means that Chris and the team spend a lot of time communicating personally with our customers – many of whom have become friends.

As the owner of a Christopher Ward watch, if ever you need to get hold of us we are at your service. We have listed some useful contact details on the back cover.

There is also always something new going on at our website at **[www.christopherward.co.uk](http://www.christopherward.co.uk)** and, if you haven't already discovered the independent forum dedicated to our brand at **[www.christopherwardforum.com](http://www.christopherwardforum.com)** we would recommend a visit. Informative and fun, it's a great place to hear the unexpurgated view of Christopher Ward of London!

# CHR. WARD

L O N D O N

## HEAD OFFICE

Christopher Ward (London) Limited,  
1 Park Street, Maidenhead,  
Berkshire SL6 1SL United Kingdom  
+44 (0)1628 763040

## CUSTOMER SERVICES

UNITED KINGDOM: +44 (0)1628 763040  
UNITED STATES OF AMERICA: 1.877.226.8224  
[customerservices@christopherward.co.uk](mailto:customerservices@christopherward.co.uk)  
[technical@christopherward.co.uk](mailto:technical@christopherward.co.uk)

## WEBSITE

[www.christopherward.co.uk](http://www.christopherward.co.uk)  
[www.christopherward.com](http://www.christopherward.com)  
[www.christopherward.eu](http://www.christopherward.eu)