

# **C1000** TYPHOON CHRONOGRAPH

OWNER'S HANDBOOK

**CHR. WARD**  
L O N D O N

## TIME ON YOUR SIDE...

Your Christopher Ward watch has been designed and engineered by highly talented craftspeople to ensure not only accurate and precise timekeeping but also to bring a real pride of ownership that only luxury items of the highest quality can ever hope to deliver.

You have made an investment, a good one, and the aim of this handbook is to help you make the most of that investment during what I hope will be a lifetime of ownership.

A handwritten signature in black ink, appearing to read 'Chris', with a stylized, flowing script.

Christopher Ward

### CONTENTS

THE EUROFIGHTER TYPHOON	2-3
C1000 TYPHOON	4-7
TECHNICAL INFORMATION	8-9
OPERATING INSTRUCTIONS	10-17
THE CW360 WATCH CARE PROGRAMME	18-19
GENERAL INFORMATION	20

## THE EUROFIGHTER TYPHOON

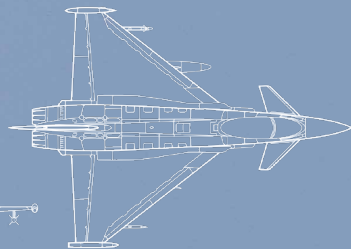
**The Eurofighter Typhoon is a twin-engine, canard-delta wing, multirole fighter. It has been a joint development by the United Kingdom, Germany, Italy and Spain.**

Initial agreement was made in 1988, but contracts for the first batch of 148 aircraft – of which 53 were for the RAF – was not signed until 10 years later.

The first Typhoon Squadron at RAF Coningsby was formally activated on 1st July 2005. A second tranche of 67 Typhoons has been added since then.

The early version of the Typhoon, which is most often a single-seater, cost £64.8 million. The improved second generation models carry a price tag of £90m. For this, the RAF (and the German, Italian, Spanish airforces, plus those of Saudi and Oman) get a sleek looking craft that is just over 52ft long (almost 16m) with a delta wingspan of more than 36 ft (just over 11m).

Two Eurojet EJ200 turbojets, the afterburners of which sit side by side at the rear of the fighter, provide 20,000 lbs of thrust each to deliver a top speed of 1.8 Mach (1370mph) at a maximum altitude of 55,000ft (16,764m). Ready for action, the Typhoon is armed with air-to-air missiles, Mauser 27mm cannon and a 1000lb bomb.



## C1000 TYPHOON FGR4 CERAMIC

**The current version of this twin engined master of the skies, the Typhoon FGR4, has provided the inspiration for the latest aviator's watch from Christopher Ward.**

In keeping with the technical sophistication of the computer-controlled jet fighter, the C1000 Typhoon marks another technical advancement for Christopher Ward, being the first of its watches to boast a ceramic outer case. In a further refinement, a titanium frame supporting the movement sits inside the ceramic. The protective carapace of ceramic is fitted around the inner case through intense pressure.

The appeal of this advanced composite comes from its light weight, scratch-resistance, durability, smooth touch and deep opaque appearance,

especially in the matt black finish used for the C1000 Typhoon. Today's ceramic is six or seven times tougher than steel; it is so tough that only a diamond can scratch it.

Details taken from the plane itself have enriched the appearance of the watch. The chrono eyes echo the twin circles of the jet's after-burners. In one variation, the lower eye is modelled on the official low-visibility RAF roundel of baby blue and salmon pink. The white numerals are rendered in the font used on the Typhoon's HUD (Head Up Display), part of its sophisticated Cockpit Information Unit (CIU). In a very neat touch, the counter balance of the second hand displays the unmistakable silhouette of the Typhoon while its tip carries a canard delta reference.





"WE BELIEVE IN THE C1000 WE HAVE A WATCH THAT NOT ONLY HONOURS THE AMAZING TYPHOON AIRCRAFT, BUT FURTHER CONFIRMS CHRISTOPHER WARD AS A WATCHMAKER THAT CONTINUES TO SEEK PERFECTION THROUGH INNOVATION"

CW CO-FOUNDER MIKE FRANCE

On the backplate a detailed rendition of the wonderful shape of the FGR4 is seen in the form of an intricate 3-D raised coin effect. The plate is engraved with "Typhoon FGR4 Multi-Role Combat" and the RAF motto "Per Ardua Ad Astra" ("Through struggles to the stars").

A modified version of the revered ETA Valjoux 7750 movement has been used for the new chronograph. This lightweight yet strong watch is as impressive as the eurofighter that inspired it.

**For those of us who dream, the C1000 is as close as we will ever come to being a fighter pilot!**





## TECHNICAL INFORMATION

### FEATURES

- Swiss made
- Customised self-winding automatic chronograph
- Hour/min chronograph function
- 42 hour power reserve
- Ceramic case with titanium sub-frame, titanium crown and pushers with PVD black finish
- Anti-reflective sapphire crystal with museum grade AR08 coating to both sides
- SuperLuminova™ indexes and hands with blue emission
- Unique engraved back plate with Eurofighter
- Highly detailed, deep etched Typhoon medallion on case back
- Individually engraved serial number
- High density webbing strap with titanium buckle

### TECHNICAL INFORMATION

Diameter:	42mm
Height:	14mm
Calibre:	Modified ETA 7750
Vibrations:	28,000 per hour
Case:	Titanium/Ceramic
Water Resistance:	5 ATM (50 metres)
Strap:	20mm



# OPERATING INSTRUCTIONS

CHR. WARD  
LONDON

# DISPLAY AND CONTROL BUTTONS

## DISPLAY ELEMENTS

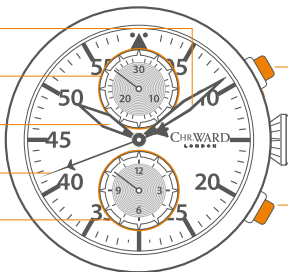
Minute hand

Minute counter

Hour hand

Centre stop-second hand

Hour counter



## CONTROL BUTTONS

Push-button A  
(Start / Stop)

Crown

Push-button B  
(Reset)

- The **minute counter** measures 30 minutes per rotation.
- The **hour counter** measures 12 hours per rotation.
- The **centre stop-second** measures 60 seconds per rotation.

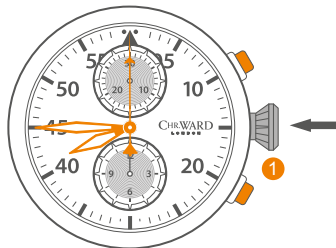
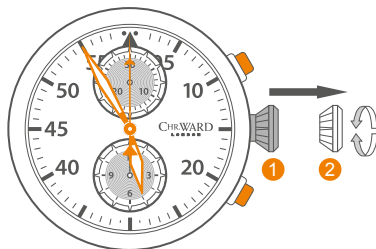
PLEASE NOTE: Before using the chronograph functions, please ensure that:

- The crown is in position ①.
- The 3 chronograph hands are precisely at zero position following activation of push-button B.

## SETTING THE TIME

- Pull out the crown to position ② (the watch stops).
- Turn the crown until you reach the correct time e.g. **08.45 hr.**
- Push the crown back into position ① and the crown should sit flush to the case.

PLEASE NOTE: The watch can also be manually wound from position ①.



# CHRONOGRAPH BASIC FUNCTION

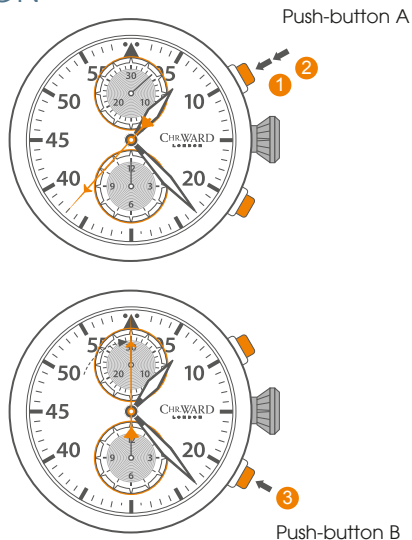
## (START / STOP / RESET)

### Example:

- ➊ **Start:** Press push-button **A**.
- ➋ **Stop:** to stop the timing, press push-button **A** once more and read the 2 chronograph counters: **4 min / 37 sec.**
- ➌ **Zero positioning:**  
Press push-button **B**.  
(The 3 chronograph hands will be reset to their zero positions).

### Example of use:

Timing a runner over 100m.





## WATER RESISTANCE

Although your watch has been through vigorous static pressure testing, it is worth remembering that there are many variables that can affect the water resistance of your watch.

For instance, arm movements during swimming and the sudden impact of diving and water sports will drastically increase the pressure the watch is under. Wearing your watch in the bath, shower, or sauna can also have an effect as a rapid increase in temperature can cause seals to expand and in extreme cases, malfunction or create condensation.

For these reasons, the water resistance rating of your watch (as shown) **should only ever be considered a guideline** and we strongly recommend they are always adhered to.



### **1 ATM (10 METRES)**

Safe to wear your watch while washing your hands with tap water.



### **3 ATM (30 METRES)**

Washing your car and/or general hose pipe usage.



### **5 ATM (50 METRES)**

Water resistant to most household shower units.



### **10 ATM (100 METRES)**

Safe to use while snorkelling in open water.



### **30 ATM (300 METRES)**

Ideal for experienced divers and those practising scuba-diving.



### **50 ATM (500 METRES)**

Professional divers, experiencing prolonged exposure underwater.



### **100 ATM (1000 METRES)**

Professional deep sea diving.



## STRAPS & BRACELETS

As you would expect, we place as much emphasis on the quality of our straps and bracelets as we do our watches. We only use the finest leathers for our straps and our premium alligator straps are all ethically sourced from CITES approved farms in Louisiana.

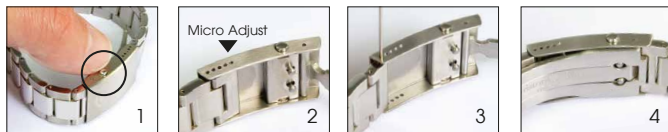
Similarly, we only use the finest metals in the construction of our bracelets, all of which are precision engineered for durability, efficiency and comfort. The following guidelines explain how easy it is to use and adjust your Christopher Ward strap or bracelet.

### LEATHER STRAP WITH BADER DEPLOYMENT



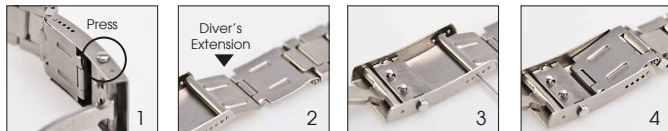
1. Press to release
2. Pull open the clasp
3. Locate the opening and thread the strap through
4. Close the clasp

## BRACELET WITH MICRO-ADJUSTMENT



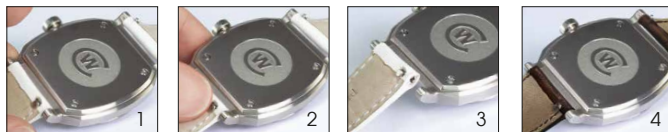
1. Press to release
2. Expand adjustment
3. Adjust pin position
4. Close the clasp

## DIVER'S EXTENSION (WHERE APPLICABLE)



1. Press to release
2. Expand adjustment
3. Adjust pin position
4. Close the clasp

## QUICK-RELEASE PINS (WHERE APPLICABLE)



1. Locate the release
2. Drag button back
3. Detach strap
4. Align holes to click a new strap in position

# THE CW360 WATCH CARE PROGRAMME

Your watch is constructed from the finest components and materials available including one of Switzerland's finest quartz movements. As with all watches of this quality, with the right care and attention, your new Christopher Ward watch has the potential to become an heirloom piece giving further joy to future generations. It's for this reason we have created our industry leading approach to after-sales care which we term the CW360 Watch care Programme.

**Christopher Ward's CW360 Watch Care Programme is designed to deliver you complete peace of mind and the best support possible throughout the lifetime of your ownership. The programme has three key elements:**

Visit our website for more details about the CW360 Watch Care Programme

### **1 60 DAY **FREE** RETURNS**

---

Our success depends on you being completely happy with your new Christopher Ward watch. If for any reason you aren't, you have up to 60 Days to return your watch, absolutely free of charge, and receive a replacement or full refund by return – and without any quibbles from us!

### **2 **FREE** 5 YEAR MOVEMENT GUARANTEE**

---

Your watch, at its heart, has a top quality precision engineered Swiss movement – so it's very unlikely to give you problems with the minimum amount of care and attention, including a regular service. We recommend you return your watch to us every 3/4 years for a service, so our expert technicians can keep your fine timepiece in the peak of condition. (We recommend that whenever your quartz battery needs changing you consider having the watch serviced at the same time to keep it in perfect working order.)

### **3 **SERVICING & REPAIRS...**THE CHRISTOPHER WARD WAY...**

---

Our innovative approach to servicing and repairing your Christopher Ward watch means that having your watch serviced or repaired doesn't mean months of waiting followed by an exorbitant bill – which is pretty much the experience guaranteed by every other luxury watch brand. We have developed an easy, quick and affordable expert service and repairs programme that doesn't cost the earth and has your watch back where it belongs – on your wrist – in double-quick time.

## KEEPING IN TOUCH WITH CHRISTOPHER WARD

From small beginnings just a few short years ago (our first workshop was actually a refurbished chicken shed!), Christopher Ward has won a worldwide following for his eponymous watch brand and can justifiably claim to manufacture the most affordable luxury watches in the world.

For many, the philosophy behind the brand, of trying to put luxury watches within the reach of everyone, is as attractive as the watches themselves, as is the very open approach of the business which means that Chris and the team spend a lot of time communicating personally with our customers – many of whom have become friends.

As the owner of a Christopher Ward watch, if ever you need to get hold of us we are at your service. We have listed some useful contact details on the back cover.

There is also always something new going on at our website at **[www.christopherward.co.uk](http://www.christopherward.co.uk)** and, if you haven't already discovered the independent forum dedicated to our brand at **[www.christopherwardforum.com](http://www.christopherwardforum.com)** we would recommend a visit. Informative and fun, it's a great place to hear the unexpurgated view of Christopher Ward of London!

# CHR. WARD

L O N D O N

## HEAD OFFICE

Christopher Ward (London) Limited,  
1 Park Street, Maidenhead,  
Berkshire SL6 1SL United Kingdom  
+44 (0)1628 763040

## CUSTOMER SERVICES

UNITED KINGDOM: +44 (0)844 875 1515  
UNITED STATES OF AMERICA: 1.877.226.8224  
[customerservices@christopherward.co.uk](mailto:customerservices@christopherward.co.uk)  
[technical@christopherward.co.uk](mailto:technical@christopherward.co.uk)

## WEBSITE

[www.christopherward.co.uk](http://www.christopherward.co.uk)  
[www.christopherward-usa.com](http://www.christopherward-usa.com)