

# C60 TRIDENT PRO AUTOMATIC

OWNER'S HANDBOOK

CHR. WARD  
L O N D O N

## TIME ON YOUR SIDE...

Your Christopher Ward watch has been designed and engineered by highly talented craftspeople to ensure not only accurate and precise timekeeping but also to bring a real pride of ownership that only luxury items of the highest quality can ever hope to deliver.

You have made an investment, a good one, and the aim of this handbook is to help you make the most of that investment during what I hope will be a lifetime of ownership.



Christopher Ward

### CONTENTS

TRIDENT COLLECTION	2-3
C60 TRIDENT PRO AUTOMATIC	4-5
TECHNICAL INFORMATION	6-7
HOW TO OPERATE YOUR C60 TRIDENT PRO	8-14
OUR WATCH CARE PROGRAMME	15
GENERAL INFORMATION	16

## TRIDENT COLLECTION



When Jacques Cousteau invented the aqua-lung in the 1950's he instantly made diving both easier and more accessible.

And when around this time Rolex asked him to help test their new diver's watch, the Submariner, it quickly became the most successful watch in history.

In 1954, Rolex used the same aesthetic to create the GMT Master, since which time, many watch brands have interpreted the design – although few mention their source of inspiration!

We, however, are proud our Trident watches, the 38mm and 42mm Pro's, GMT's and Chronometers, pay due homage to the most successful watches in history, in a way that is distinctively Christopher Ward.

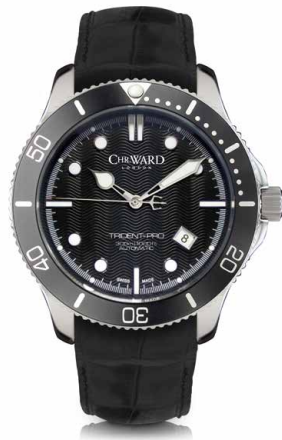
*Opposite page (L–R): C60 Trident GMT Automatic, C60 Trident Pro Chronometer, C61 Trident Pro Automatic and C60 Trident Automatic – Blue.*



## C60 TRIDENT PRO AUTOMATIC

No premium diving watch ever looked as cool as the C60 Trident Pro. With the ability to withstand water pressure up to 300 metres (1000 feet), the C60 was an instant hit with landlubbers as well as scuba divers and has remained one of our best selling watches since its launch in 2010.

Whilst the C60 Automatic can't describe the time in two time zones simultaneously, like its stable companion the C60 GMT, it is a diving watch which has been engineered for perfection and that famous Swiss precision.





## TECHNICAL INFORMATION

### FEATURES

- Swiss made
- \*25 or 26 jewel Swiss mechanical movement
- Self winding (automatic)
- Uni-directional bezel
- Screw-in crown and back plate
- Water resistant to 30 ATM
- Date indicator
- Anti-reflective sapphire crystal
- 38 hours maximum power reserve
- SuperLuminova™ indices, bezel marker and hands
- Unique engraved individual serial number

### TECHNICAL INFORMATION

Diameter:	42mm
Height:	12.6mm
Calibre:	*ETA 2824-2 or Sellita SW200-1
Case:	316L Stainless steel
Water Resistance:	30 ATM (300 metres)
Vibrations:	28,800 per hour (4 Hz)
Accuracy:	+20 / -10 seconds per day
Strap:	22mm strap





# HOW TO OPERATE YOUR C60 TRIDENT PRO

CHR. WARD  
LONDON

TRIDENT-PRO  
300m | 1000ft

## DISPLAY AND CONTROL BUTTONS

Your C60 Trident Pro Automatic has a maximum power reserve of 38 hours when fully wound. To re-power the watch after a period of non-use, simply wind the crown in approximately

20 revolutions. Normal wearing will very quickly allow the rotor to start re-powering the watch over time after putting it on your wrist.

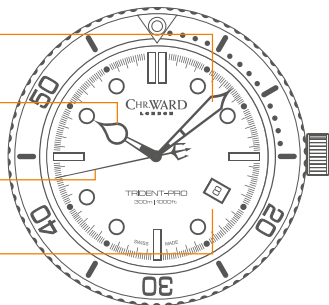
### DISPLAY ELEMENTS

Minute Hand

Hour hand

Second Hand

Date Window



### CONTROL BUTTONS

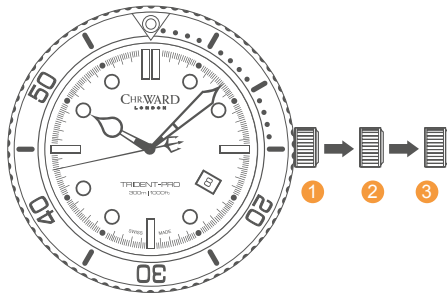
Crown

## SETTING THE TIME/DATE

- First unscrew the crown anti-clockwise from the case to position ① for winding in power. Wind in a clockwise direction to re-power the watch.
- Pull gently into position ②. For rapid date correction, turn in a clockwise direction.
- Pull gently into position ③. This position is used for handsetting, and stopping of the second hand. For precise time setting it is recommended to pass beyond the desired minute and to set the hand backwards.

**PLEASE NOTE:** Date correction should not be carried out between 20.00 hr and 02.00 hr as the watch gearing will already be aligning itself to change the date. The crown should always be pushed in after adjustment, and it is best to do so from position ③ to avoid advancing beyond the desired date.

**You must always ensure the crown is fully tightened before any use in water.**



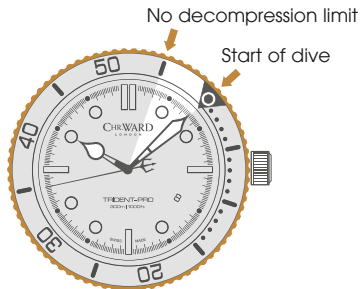
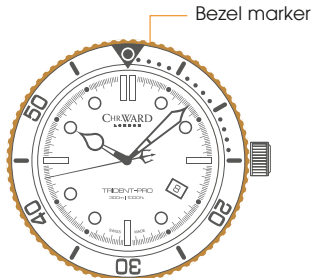
## THE BEZEL

If using the bezel for a dive and let's say the recognised maximum "no-stop time" is 55 minutes, then in this example (shown left) the time at the surface immediately before the dive is 10.08am.

However the bezel marker is at the 12.00 hr position.

- 1 Move the bezel marker anti-clockwise so that it aligns with the 8 minute position.
- 2 You can now read that the 55 minute no decompression limit will occur at 3 minutes past the next hour.

**PLEASE NOTE:** It is always useful and best practice to make a note on a dive slate before entering the water and to carry a set of dive tables should the dive plan change during the course of the dive. A safety stop for 3 to 5 minutes at 15ft is recommended at the end of all dives. A safety stop for 3 minutes at 15ft is required any time you come within 3 pressure groups of a no decompression limit, and for any dive to a depth of 100ft or deeper.

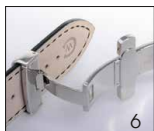


## STRAPS & BRACELETS

As you would expect, we place as much emphasis on the quality of our straps and bracelets as we do our watches. We only use the finest leathers for our straps and our premium alligator straps are all ethically sourced from CITES approved farms in Louisiana.

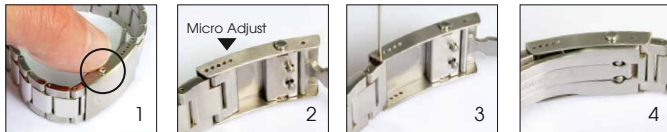
Similarly, we only use the finest metals in the construction of our bracelets, all of which are precision engineered for durability, efficiency and comfort. The following guidelines explain how easy it is to use and adjust your Christopher Ward strap or bracelet.

### LEATHER STRAP WITH EASY RELEASE BUTTERFLY CLASP



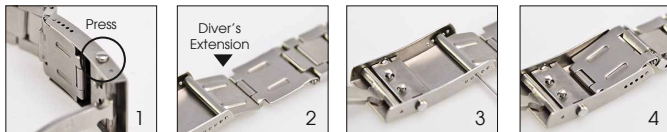
1. Locate the clasp
2. Press the quick-release
3. Pull open the clasp
4. Locate the opening
5. Thread strap through
6. Secure the strap
7. Close the clasp
8. Complete

## BRACELET WITH MICRO-ADJUSTMENT



1. Press to release
2. Expand adjustment
3. Adjust pin position
4. Close the clasp

## DIVER'S EXTENSION (WHERE APPLICABLE)



1. Press to release
2. Expand adjustment
3. Adjust pin position
4. Close the clasp

## QUICK-RELEASE PINS (WHERE APPLICABLE)



1. Locate the release
2. Drag button back
3. Detach strap
4. Align holes to click a new strap in position

## WATER RESISTANCE

Although your watch has been through vigorous static pressure testing, it is worth remembering that there are many variables that can affect the water resistance of your watch.

For instance, arm movements during swimming and the sudden impact of diving and water sports will drastically increase the pressure the watch is under. Wearing your watch in the bath, shower, or sauna can also have an effect as a rapid increase in temperature can cause seals to expand and in extreme cases, malfunction or create condensation.

For these reasons, the water resistance rating of your watch (as shown) **should only ever be considered a guideline** and we strongly recommend they are always adhered to.



### **1 ATM (10 METRES)**

Safe to wear your watch while washing your hands with tap water.



### **3 ATM (30 METRES)**

Washing your car and/or general hose pipe usage.



### **5 ATM (50 METRES)**

Water resistant to most household shower units.



### **10 ATM (100 METRES)**

Safe to use while snorkelling in open water.



### **30 ATM (300 METRES)**

Ideal for experienced divers and those practising scuba-diving.



### **50 ATM (500 METRES)**

Professional divers, experiencing prolonged exposure underwater.



### **100 ATM (1000 METRES)**

Professional deep sea diving.

## OUR WATCH CARE PROGRAMME

Your watch is constructed from the finest components and materials available including one of Switzerland's finest mechanical movements. As with all watches of this quality, with the right care and attention, your new Christopher Ward watch has the potential to become an heirloom piece giving further joy to future generations. It's for this reason we have created our industry leading approach to after-sales care, starting with our famous 60/60 Guarantee which remains the most comprehensive guarantee in the world of watchmaking.

Visit our website for more details about our 60/60 Guarantee and Service and Repair Programme.

Christopher Ward's 60/60 Guarantee is designed to deliver you complete peace of mind and the best support possible throughout the lifetime of your ownership. The guarantee has two key elements and sits alongside our Servicing and Repairs Programme:

### **60/60 GUARANTEE**

#### **1. 60 DAY FREE RETURNS**

Our success depends on you being completely happy with your new Christopher Ward watch. If for any reason you aren't, you have up to 60 days to return your watch, absolutely free of charge, and receive a replacement or full refund by return – and without any quibbles from us!

#### **2. 60 MONTH MOVEMENT GUARANTEE**

Your watch, at its heart, has a top quality precision engineered Swiss movement – so it's very unlikely to give you problems with the minimum amount of care and attention, including a regular service. We recommend you return your watch to us every 3/4 years for a service, so our expert technicians can keep your fine timepiece in the peak of condition.

### **SERVICING & REPAIRS...THE CHRISTOPHER WARD WAY...**

Our innovative approach to servicing and repairing your Christopher Ward watch means that having your watch serviced or repaired doesn't mean months of waiting followed by an exorbitant bill – which is pretty much the experience guaranteed by every other luxury watch brand. We have developed an easy, quick and affordable expert service and repairs programme that doesn't cost the earth and has your watch back where it belongs – on your wrist – in double-quick time.



## KEEPING IN TOUCH WITH CHRISTOPHER WARD

From small beginnings just a few short years ago (our first workshop was actually a refurbished chicken shed!), Christopher Ward has won a worldwide following for his eponymous watch brand and can justifiably claim to manufacture the most affordable luxury watches in the world.

For many, the philosophy behind the brand, of trying to put luxury watches within the reach of everyone, is as attractive as the watches themselves, as is the very open approach of the business which means that Chris and the team spend a lot of time communicating personally with our customers – many of whom have become friends.

As the owner of a Christopher Ward watch, if ever you need to get hold of us we are at your service. We have listed some useful contact details on the back cover.

There is also always something new going on at our website at **[www.christopherward.co.uk](http://www.christopherward.co.uk)** and, if you haven't already discovered the independent forum dedicated to our brand at **[www.christopherwardforum.com](http://www.christopherwardforum.com)** we would recommend a visit. Informative and fun, it's a great place to hear the unexpurgated view of Christopher Ward of London!

# CHR. WARD

L O N D O N

## **HEAD OFFICE AND SHOWROOM**

Christopher Ward (London) Limited,  
1 Park Street, Maidenhead,  
Berkshire SL6 1SL United Kingdom  
+44 (0)1628 763040

## **CUSTOMER SERVICES**

UNITED KINGDOM: +44 (0)844 875 1515  
UNITED STATES OF AMERICA: 1.877.226.8224  
[customerservices@christopherward.co.uk](mailto:customerservices@christopherward.co.uk)  
[technical@christopherward.co.uk](mailto:technical@christopherward.co.uk)

## **WEBSITE**

[www.christopherward.co.uk](http://www.christopherward.co.uk)  
[www.christopherward-usa.com](http://www.christopherward-usa.com)