

C60 Trident Bronze

Owner's Handbook

 Christopher
Ward

Time on your side

Your Christopher Ward watch has been designed in Britain and engineered in Switzerland by highly talented craftspeople. This ensures not only accurate and precise timekeeping, but also brings a real pride of ownership that only watches of the highest quality standards can hope to deliver.

You have made an investment, a good one, and the aim of this manual is to help you make the most of that investment in what we hope will be a lifetime of ownership.

Mike France
CEO & co-founder



C60 Trident Bronze

The C60 Trident Bronze is a one-of-a-kind diving watch.

Not because of its water-resistance to 600m. Or the accuracy that comes with being powered by the Sellita SW200-1 automatic movement.

But because the materials and processes at its heart are by their nature unique.

Take the bronze case. Used in early diving helmets, bronze is an alloy, primarily made of copper, with 12-15 percent tin, making it both durable and resistant to salt-water corrosion. Best of all, it ages beautifully, developing a unique patina that increases over time.

The dial reinforces the bespoke credentials. Each one has been distressed by hand, delivering a one-of-a-kind textured surface. Combined with the patina on the case, your C60 Trident Bronze is an authentic limited edition of one.

All this adds up to one thing: the watch you hold today will be a subtly different proposition in a couple of years. And like a pair of selvedge denim jeans that have faded with use, all the better for it.

So while it might have been instant attraction with the C60 Trident Bronze, as time passes we hope it'll develop into something like a lifelong love affair.

Enjoy the watch!

Features

- Swiss made
- Self-winding mechanical movement
- 38-hour power reserve
- Brushed bronze case
- Unidirectional bronze sandblasted bezel with raised numbers
- Embossed screw-in crown
- Screw-down deep-stamped 3D backplate
- Unique engraved serial number
- 3.4mm anti-reflective sapphire crystal
- Central hacking seconds
- Date calendar
- Ombré dial with 'twin flags' matte finished at 12 o'clock
- Top-brushed indexes with diamond polished facets
- Sandblasted and polished hands
- Signature Trident counter-balance on seconds hand
- Super-LumiNova® Grade X1 GL C1-filled hands and indexes
- Eco-friendly luxury presentation case and owner's handbook

Technical Information

Calibre	Sellita SW200-1
Case	Bronze
Diameter	40mm
Height	12.95mm
Lug to lug	47.46mm
Weight	83g
Water resistance	60 ATM (600 metres)
Vibrations	28,800 per hour (4Hz)
Timing tolerance	-20/+20 seconds per day
Strap width	20mm



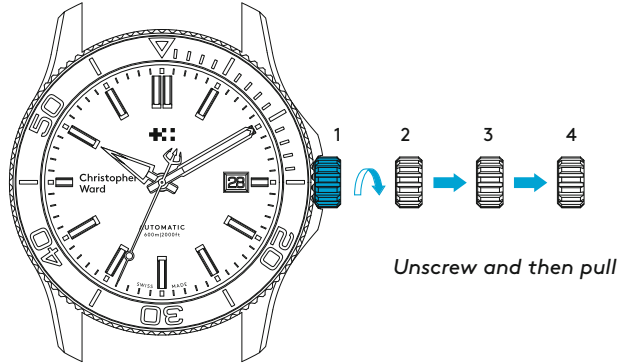
Setting the time and date

For a superior water resistance your crown is of the screw-in type. The crown should sit flush to the case (position **1**) in order to maintain water resistance.

- First unscrew the crown anti-clockwise from the case to position **2** for winding in power. Wind in a clockwise direction to re-power the watch. Your C60 Trident Bronze has a maximum power reserve of 38 hours when fully wound. Normal wearing will allow the rotor to start re-powering the watch over time after putting on your wrist. After a period of non-use we recommend that

you manually wind the watch at least 20 times to ensure there is sufficient power in the watch before the rotor maintains the power.

- Pull gently into position **3**. For rapid date correction, turn in a clockwise direction.
- Pull gently into position **4**. This position is used for handsetting and stopping of the seconds hand. For precise time setting it is recommended to pass beyond the desired minute and to set the hand backwards.



1. Crown screw-in position
2. Manual winding
3. Date setting
4. Time setting

PLEASE NOTE:

*Date correction should not be carried out between 20.00 hr and 02.00 hr as the watch gearing will already be aligning itself to change the date. The crown should always be pushed in after adjustment, and it is best to do so from position **3** to avoid advancing beyond the desired date. You must always ensure the crown is fully tightened before any use in water.*

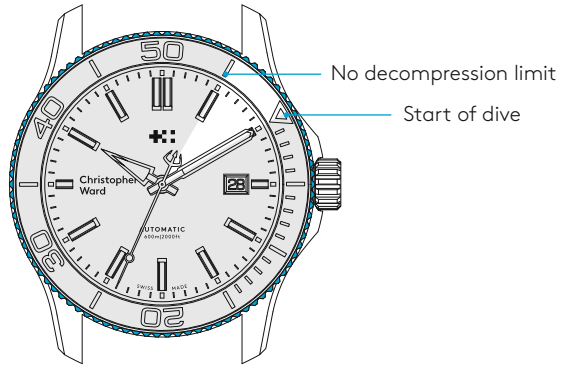
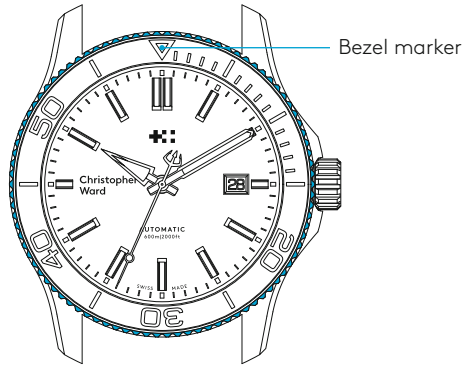
Diving with your watch

If using the bezel for a dive and let's say the recognised maximum "no-stop time" is 55 minutes, then in this example (shown right) the time at the surface immediately before the dive is 10.10am. However the bezel marker is at the 12.00 hr position.

- Move the bezel marker anti-clockwise so that it aligns with the 10 minute position.
- You can now read that the 55 minute no decompression limit will occur at 5 minutes past the next hour.

PLEASE NOTE:

It is always useful and best practice to make a note on a dive slate before entering the water and to carry a set of dive tables should the dive plan change during the course of a dive. A safety stop for 3 to 5 minutes at 15ft is recommended at the end of all dives. A safety stop for 3 minutes at 15ft is required any time you come within 3 pressure groups of a no decompression limit, and for any dive to a depth of 100ft or deeper.

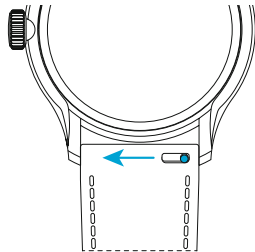


Straps

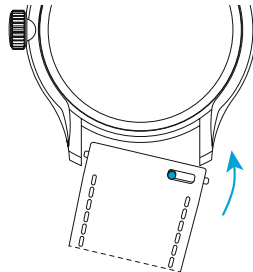
As you would expect, we place as much emphasis on the quality of our straps as we do our watches. We only use the finest materials in our straps, with quick-release pins also included for your convenience.

The following guidelines explain how easy it is to use, adjust and replace your Christopher Ward strap.

Using the quick-release pins on your strap



1. Locate the quick-release pin on your strap.
Pull the pin to the side to detach your strap.



2. To reattach your strap, align the pins to the lug holes and click the strap into position. Repeat for the other side.



Water resistance

Although your watch has been through vigorous static pressure testing, it is worth remembering that there are many variables that can affect the water resistance of your watch. For instance, arm movements during swimming and the sudden impact of diving and water sports will drastically increase the pressure the watch is under.

Wearing your watch in the bath, shower, or sauna can also have an effect as a rapid increase in temperature can cause seals to expand and in extreme cases, malfunction or create condensation.

For these reasons, the water resistance rating of your watch (as shown) should only ever be considered a guideline and we strongly recommend they are always adhered to.



1 ATM (10 metres)

Safe to wear your watch while washing your hands with tap water



15 ATM (150 metres)

Safe to use while snorkelling in open water



100 ATM (1000 metres)

Professional deep sea diving



3 ATM (30 metres)

Washing your car and/or general hose pipe usage



30 ATM (300 metres)

Ideal for experienced divers and those practising scuba-diving



5 ATM (50 metres)

Water resistant to most household shower units



60 ATM (600 metres)

Professional divers, experiencing prolonged exposure underwater

60|60 Guarantee

Your watch is constructed from the finest components and powered by a Swiss mechanical movement. As with all quality watches, with the right care and attention, your new timepiece has the potential to become an heirloom, giving joy to future generations.

It's for this reason we've created an industry-leading approach to after-sales care, starting with our famous 60|60 Guarantee – the most comprehensive warranty in watchmaking.

60-day free returns

We hope you'll be happy with your watch from the moment it arrives. However, if that's not the case you have 60 days to return it in perfect, unused condition (with all its accompanying paperwork) in order to receive a replacement or full refund.

60-month movement guarantee

Your watch is powered by a precision-engineered Swiss movement. In the rare event that your movement develops a fault within five years we'll repair it for free under warranty. Your watch will need to be sent to us for a full diagnosis before processing a repair under warranty. We will always keep you informed before carrying out any work.

Service and repairs: the Christopher Ward way

Our approach to service and repairs is about uncompromised quality and great value for money. The process, led by our expert technicians, won't cost the earth and will have the watch back on your wrist in reasonable time. We recommend you service your watch every three to four years to keep it in peak condition.

PLEASE NOTE:

The 60|60 Guarantee does not cover accidental damage. Any service or repair by a third-party retailer will void your 60|60 Guarantee. For more details, please visit our website.

Contact us

Keeping in touch with Christopher Ward

From humble beginnings in 2004 (our first workshop was a refurbished chicken shed!) Christopher Ward has won a global following – and can justifiably claim to make the most affordable luxury watches in the world.

For many of our fans, the philosophy of trying to put luxury watches within the reach of everyone, is as smart as the timepieces themselves. This open approach sees co-founders Mike France and

Peter Ellis communicate personally with customers and listen to their feedback. Something that helps us improve our offering to you. As the owner of a Christopher Ward watch, if you ever need to get hold of us we're at your service. And if you'd like to explore the CW world more, you can follow us on social media.



@ChristopherWardLondon



@ChrisWardLondon

Head office

1 Park Street, Maidenhead,
Berkshire SL6 1SL
United Kingdom

Customer support

UK and EU Tel: +44 (0)1628 763040
US Tel: +1 (877) 380 2288
ROW Tel: +1 (877) 380 2288
customerservices@christopherward.co.uk
technical@christopherward.co.uk

christopherward.com

