



C63 Bilbao Chronometer

Owner's handbook

Time on your side

Your C63 Bilbao Chronometer watch has been designed in England and handbuilt in Switzerland by highly talented craftspeople. This ensures not only accurate and precise timekeeping, but also brings a real pride of ownership that only watches of the highest quality standards can hope to deliver.

You have made an investment, a good one, and the aim of this handbook is to help you make the most of that investment in what we hope will be a lifetime of ownership.

Mike France

CEO & co-founder



 **Christopher
Ward**



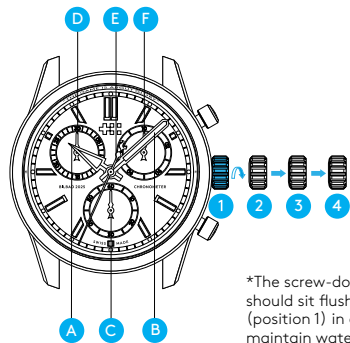
The features and technical details of your C63 Bilbao Chronometer

- Swiss made
- Limited edition of 2,025 individually numbered pieces
- COSC-certified quartz chronograph movement, featuring PowerDrive and PreciDrive technology
- White polished lacquer dial with applied Twin-flag logo, and polished and brushed indexes
- 1/10th second counter, 30-minute counter, and running seconds sub-dial
- Polished hour and minute hands, with central 60-second counter featuring the Spurs crest
- Brushed and polished Light-catcher™ case
- Anti-reflective sapphire crystal
- Case rehaut engraved with the Spurs motto
- Circular-brushed pushers with polished facets
- Screw-down crown and deep-etched caseback featuring the official European Winners 2025 logo

Calibre	ETA G10.202 AD COSC
Jewels	4
Frequency	32,768 Hz
Battery	394
Battery lifetime	20-38 months, depending on chronograph use
Timing tolerance	+/-10 sec per year
Material	Stainless steel
Diameter/Weight	39mm : 56g
Height	12.30mm
Lume	Super-LumiNova® Grade X1 BL C1
Water resistance	15 ATM (150m)
Strap width	20mm

Setting the time

- A** Hour hand
- B** Minute hand
- C** Running seconds hand
- D** 30-minute counter
- E** 60-seconds counter
- F** 1/10 second counter



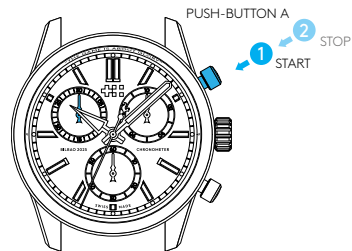
4-position crown

- 1** Crown secured position
- 2** Neutral position
- 3** Synchronisation position
- 4** Time-setting position (unscrewed, fully pulled out)

*The screw-down crown should sit flush to the case (position 1) in order to maintain water resistance.

Using the chronograph function to measure game duration

When the half starts, engage the chronograph function using push-button A. Then, use the subdial at 10 o'clock to track the elapsed time. When the hand has made one and a half revolutions – and reaches the dotted line – 45 minutes have elapsed. To stop the timing, press push-button A.



Single timing function

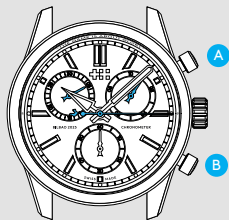
START Press **A**

STOP Press **A**

Time readout on example

- 5 minutes,
- 15 seconds
- 1/10th of a second

Reset, Press **B**



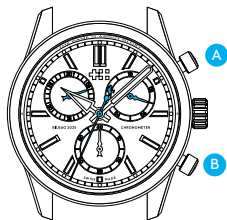
Split time function

START Press **A**

SPLIT 1 Press **B**

Time readout on example

- 6 minutes,
- 34 seconds
- 3/10th of a second



RESTART Press **B**

SPLIT 2 Press **B**

Time readout on example

- 12 minutes,
- 26 seconds
- 7/10th of a second



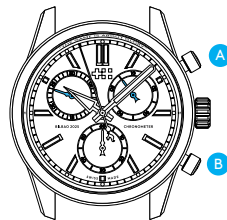
RESTART Press **B**

STOP Press **A**

Time readout on example

- 24 minutes,
- 57 seconds
- 9/10th of a second

Reset subdials, Press **B**





Synchronisation of the subdials

If chronograph hands are not aligned all at 12 o'clock before starting the single timing function or split time function they need resetting

First pull crown out to position **3**

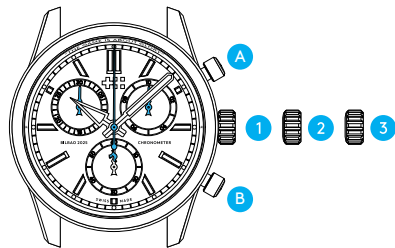
Press push-button **A** to select hand needed to set, the selected hand will complete a full revolution of the dial when selected

Press push-button **B** to adjust the selected hand (single pushing for finer adjustment and hold down for quicker adjustment)

Press push-button **A** to select the next hand

Follow for all hands

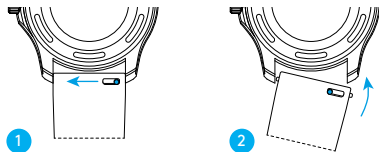
When finished screw crown to position **1** to exit resetting



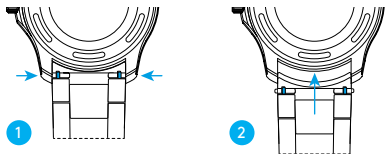
Changing your strap

- 1 Locate the quick-release pins on the underside of your case. Pinch the pins inwards to detach.
- 2 To reattach your strap or bracelet, pinch the pins inwards, and align the spring bars so they click securely into the lug holes on either side of the strap or bracelet.

Detaching and reattaching a strap

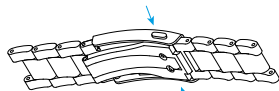


Detaching and reattaching a bracelet

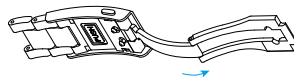


Using the micro adjustment on your bracelet

- 1 Press buttons to release.
- 2 Pull open the clasp.
- 3 There are three micro adjustment positions, which allows for a maximum extension of 6mm. To extend, push the button to unlock and simultaneously pull on the bracelet into the desired position.
- 4 To shorten, simply push the button and then slide the bracelet back into the clasp.



1



2



3



4

Servicing your watch

Our approach to service is about uncompromised quality and great value for money. The process, led by our expert technicians, won't cost the earth and will have the watch back on your wrist in reasonable time. We recommend you service your watch every three to four years to keep it in peak condition.





Your Christopher Ward watch is covered by our 60|60 Guarantee.

This means that you can return it 60 days after purchase and receive a full refund (as long as the watch is in perfect condition).

And if your watch develops a mechanical fault within five years (60 months), we'll repair it for free. Please use the warranty card opposite to arrange this.

If you ever need to get hold of us we're at your service. And if you'd like to explore the CW world more, you can follow us on social media.

