

C9 BIG DAY-DATE

OWNER'S HANDBOOK

CHR. WARD
L O N D O N

TIME ON YOUR SIDE...

Your Christopher Ward watch has been designed and engineered by highly talented craftspeople to ensure not only accurate and precise timekeeping but also to bring a real pride of ownership that only luxury items of the highest quality can ever hope to deliver.

You have made an investment, a good one, and the aim of this handbook is to help you make the most of that investment during what I hope will be a lifetime of ownership.

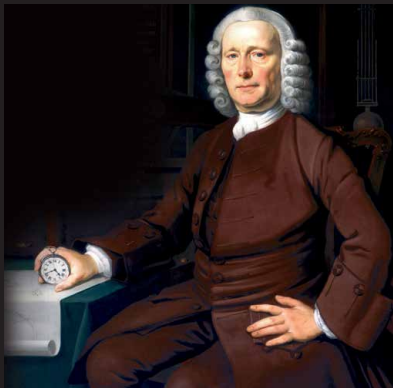


Christopher Ward

CONTENTS

JOHN HARRISON - WATCHMAKER	2-5
C9 BIG DAY-DATE	6-7
TECHNICAL INFORMATION	8-9
HOW TO OPERATE YOUR C9 BIG DAY-DATE	10-17
OUR WATCH CARE PROGRAMME	18-19
KEEPING IN TOUCH	20

JOHN HARRISON – THE MAN AND HIS MACHINES



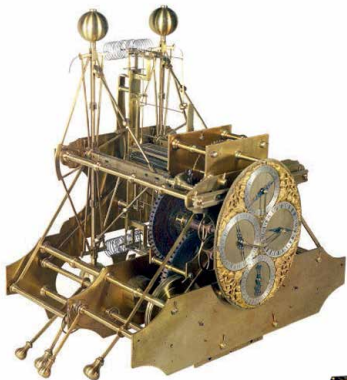
John Harrison (1693 – 1776), English inventor and horologist. Harrison's timepieces displayed a standard of accuracy never seen before, saving countless naval lives and helping to propel British power around the world.

John Harrison was born in 1693 in Foulby, West Yorkshire and lived for most of his life in Barrow upon Humber.

He became a carpenter, like his father, was a gifted musician and a self-taught watchmaker. In 1713 at the age of 20, Harrison built his first longcase clock.

Although there was nothing particularly revolutionary about the mechanics of the clock, the fact that the movement was made almost entirely from wood makes this a special moment in the history of horology. In the 19th Century, especially in Germany and the USA, clock movements made from wood became more common but it is generally agreed that Harrison was the first person to use the material for this purpose.

This example of Harrison's determined genius would ignite his lifetime's vocation and mark the beginning of an extraordinary horological journey.



Above: It took Harrison five years to build his first Sea Clock (or H1).

Right: The earliest known clock by John Harrison, signed 'John Harrison 1713' in ink on the calendar wheel. Oak dial with date aperture, 8-day striking movement and anchor escapement.



Harrison, working with his brother and later with his sons, engineered a clock that remained accurate under the changing conditions experienced on board ships – changes of humidity, temperature, salination, movement, gravitational pull, and compression, among others. He solved the problem by using different metals in the movement that expanded and contracted in complementary measures and by doing away with the need for unstable lubricants through the use of his own invention of the grasshopper escapement.

His first 'sea clock', the H1 (pictured top-left), was tested in 1736 on a trip to Lisbon in Portugal. On the return voyage Harrison's calculation of landfall was accurate – the sea master's own calculation was 60 miles out.

In 1760 horologist John Harrison took his 1735 invention of the Marine Chronometer to a higher level by making it portable in the form of a pocket watch – his H4 was effectively the first precision watch and the true ancestor of the Christopher Ward collection.

It was a very slow process to move from that first machine – a large and ungainly instrument – to the H4 pocket version of 1760. Intervening were wars, lack of funds, engineering breakthroughs and the development by Harrison himself and by other watchmakers of precision movements on a much smaller scale than had previously been thought possible.

The H4, which measures 5.2 inches in diameter, was trialled in 1761 by Harrison's son. He set sail from England for Jamaica on November 18th. On arrival in Jamaica the H4 was four minutes slow, an error in longitude of 1.25 minutes or about one nautical mile. Its unprecedented accuracy had enabled navigators to position the ship's landing point more accurately than had previously been possible.

Below: Harrison's first 'Sea watch' (H4) which took six years to construct is housed in silver pair cases. Just 13cm in diameter and weighing 1.45kg, it looks like a very large pocket watch. The movement, which has a novel type of 'vertical' escapement, is highly complex for this period.



Captain James Cook used copies of his H4 on his historic voyages to the southern Pacific. Harrison's masterpiece was a major stepping stone towards perfecting watchmaking and a catalyst to the expansion of the British Empire.

He moved to London in the 1750s, at the height of his development of his 'sea watches' and died in the capital in 1776. The ship's chronometers were rediscovered at the Royal Greenwich Observatory in the mid-20th century and restored.

“He showed a combination of determination, grit, fortitude and perseverance plus a touch of genius. He’s probably the finest watchmaker we have ever had and his legacy goes on today.”

CHRIS WARD ON JOHN HARRISON

John Harrison is widely acknowledged as one of the greatest Britons that ever lived. A memorial plaque bearing his name was unveiled in Westminster Abbey in 2006.

Today the H1, H2, H3 and H4 are on display at the National Maritime Museum in Greenwich. The H5 is owned by the Worshipful Company of Clockmakers, and is displayed in the Clockmaker's Museum in London's Guildhall.

Chris Ward is himself inspired by John Harrison, both as an individual and as a watchmaker. “Apart from the navigational breakthrough, in the history of watches the ship's chronometer was revolutionary in that it made accurate time keeping portable.”

“As a business, we find John Harrison a real stimulus to our work,” says Ward. “He showed a combination of determination, grit, fortitude and perseverance plus a touch of genius. He's probably the finest watchmaker we have ever had and his legacy goes on today.”

C9 BIG DAY-DATE

The C9 Collection celebrates the real art of watchmaking and each watch has a special movement complication created by our own master watchmaker, Johannes Jahnke, that raises each model to levels of mechanical excellence no other watch brand has achieved at such accessible price levels.

It is the Christopher Ward difference writ large and the C9 Big Day-Date is a supreme example of this difference.

Johannes has modified an ETA 2836-2 calibre automatic movement to produce the complication that gives the watch its name and when combined with the exquisitely understated design aesthetic, the result is a watch of great provenance and beauty.

Simple yet complex; a rare example of form and function in perfect balance; a design that transcends fashion and marks its wearer as someone who understands the principles of real style; a watch that would grace anyone's collection and one that we are very proud to have created. This is the C9 Big Day-Date.



TECHNICAL INFORMATION

FEATURES

- Swiss made
- Modified ETA 2836-2 automatic movement with Big Day-Date complication by Johannes Jahnke
- 38 hour power reserve
- Hand-polished surgical grade stainless steel case
- 5 ATM water resistance
- Unique engraved individual serial number
- Anti-reflective sapphire crystal
- Optic white one-piece metal dial
- Exhibition case-back
- Italian leather strap with Bader deployment

TECHNICAL INFORMATION

Diameter:	43mm
Height:	12.3mm
Calibre:	ETA 2836-2 (Modified)
Case:	316L stainless steel
Water Resistance:	5 ATM (50 metres)
Strap:	22mm leather
Dial colour:	Optic White



HOW TO OPERATE YOUR C9 BIG DAY-DATE



AUTOMATIC

DISPLAY AND CONTROL BUTTONS

DISPLAY ELEMENTS

Minute Hand

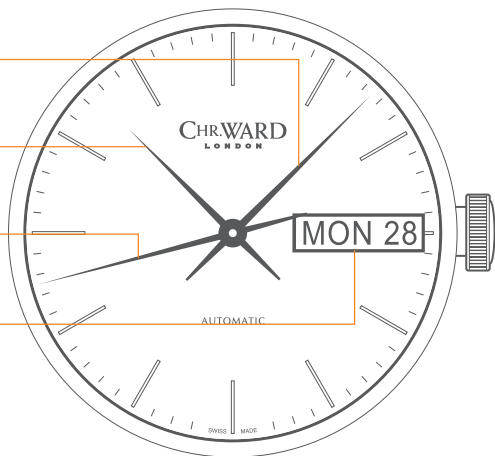
Hour hand

Second hand

Date Window

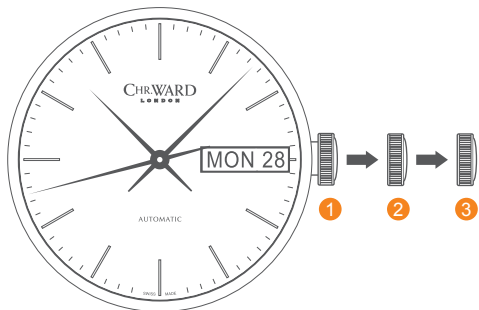
CONTROL BUTTONS

Crown



SETTING THE TIME/DATE

- Position ① is for winding in power. Wind in a clockwise direction to re-power the watch.
- Pull gently into position ②. For rapid date correction, turn in a clockwise direction. For rapid day correction, turn in an anti-clockwise direction.
- Pull gently into position ③. This position is used for handsetting, and stopping of the second hand.



PLEASE NOTE: The date can not be changed during the date changing phase between 20.00 hrs and 02.00 hrs as the watch gearing will already be aligning itself to change the date.





WATER RESISTANCE

Although your watch has been through vigorous static pressure testing, it is worth remembering that there are many variables that can affect the water resistance of your watch.

For instance, arm movements during swimming and the sudden impact of diving and water sports will drastically increase the pressure the watch is under. Wearing your watch in the bath, shower, or sauna can also have an effect as a rapid increase in temperature can cause seals to expand and in extreme cases, malfunction or create condensation.

For these reasons, the water resistance rating of your watch (as shown) **should only ever be considered a guideline** and we strongly recommend they are always adhered to.



1 ATM (10 METRES)

Safe to wear your watch while washing your hands with tap water.



3 ATM (30 METRES)

Washing your car and/or general hose pipe usage.



5 ATM (50 METRES)

Water resistant to most household shower units.



10 ATM (100 METRES)

Safe to use while snorkelling in open water.



30 ATM (300 METRES)

Ideal for experienced divers and those practising scuba-diving.



50 ATM (500 METRES)

Professional divers, experiencing prolonged exposure underwater.



100 ATM (1000 METRES)

Professional deep sea diving.

STRAPS & BRACELETS

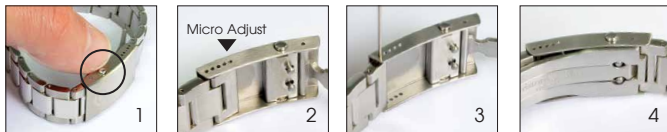
As you would expect, we place as much emphasis on the quality of our straps and bracelets as we do our watches. We only use the finest leathers for our straps and our premium alligator straps are all ethically sourced from CITES approved farms in Louisiana. Similarly, we only use the finest metals in the construction of our bracelets, all of which are precision engineered for durability, efficiency and comfort. The following guidelines explain how easy it is to use and adjust your Christopher Ward strap or bracelet.

LEATHER STRAP WITH BADER DEPLOYMENT



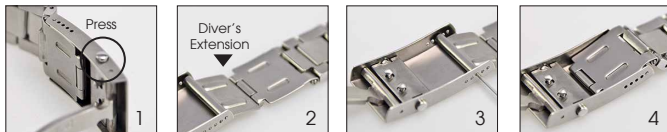
1. Press to release
2. Pull open the clasp
3. Locate the opening and thread the strap through
4. Close the clasp

BRACELET WITH MICRO-ADJUSTMENT



1. Press to release
2. Expand adjustment
3. Adjust pin position
4. Close the clasp

DIVER'S EXTENSION (WHERE APPLICABLE)



1. Press to release
2. Expand adjustment
3. Adjust pin position
4. Close the clasp

QUICK-RELEASE PINS (WHERE APPLICABLE)



1. Locate the release
2. Drag button back
3. Detach strap
4. Align holes to click a new strap in position

OUR WATCH CARE PROGRAMME

Your watch is constructed from the finest components and materials available including one of Switzerland's finest mechanical movements. As with all watches of this quality, with the right care and attention, your new Christopher Ward watch has the potential to become an heirloom piece giving further joy to future generations. It's for this reason we have created our industry leading approach to after-sales care, starting with our famous 60/60 Guarantee which remains the most comprehensive guarantee in the world of watchmaking.

Christopher Ward's 60/60 Guarantee is designed to deliver you complete peace of mind and the best support possible throughout the lifetime of your ownership. The guarantee has two key elements and sits alongside our Servicing and Repairs Programme:

60/60 GUARANTEE

1. 60 DAY FREE RETURNS

Our success depends on you being completely happy with your new Christopher Ward watch. You have up to 60 days to return your watch, absolutely free of charge, and receive a replacement or full refund by return – so long as it has not been worn and is returned in box-perfect condition.

2. 60 MONTH MOVEMENT GUARANTEE

Your watch, at its heart, has a top quality precision engineered Swiss movement – so it's very unlikely to give you problems with the minimum amount of care and attention, including a regular service. We recommend you return your watch to us every 3/4 years for a service, so our expert technicians can keep your fine timepiece in peak condition.

SERVICING & REPAIRS...THE CHRISTOPHER WARD WAY...

Our innovative approach to servicing and repairing your Christopher Ward watch means that having your watch serviced or repaired doesn't mean months of waiting followed by an exorbitant bill – which is more or less the experience guaranteed by every other luxury watch brand. We have developed an easy, quick and affordable expert service and repairs programme that doesn't cost the earth and has your watch back where it belongs – on your wrist – in double-quick time.

Visit our website for more details about our 60/60 Guarantee and Service and Repair Programme.

KEEPING IN TOUCH WITH CHRISTOPHER WARD

From small beginnings just a few short years ago (our first workshop was actually a refurbished chicken shed!), Christopher Ward has won a worldwide following for his eponymous watch brand and can justifiably claim to manufacture the most affordable luxury watches in the world.

For many, the philosophy behind the brand, of trying to put luxury watches within the reach of everyone, is as attractive as the watches themselves, as is the very open approach of the business which means that Chris and the team spend a lot of time communicating personally with our customers – many of whom have become friends.

As the owner of a Christopher Ward watch, if ever you need to get hold of us we are at your service. We have listed some useful contact details on the back cover.

There is also always something new going on at our website at **www.christopherward.co.uk** and, if you haven't already discovered the independent forum dedicated to our brand at **www.christopherwardforum.com** we would recommend a visit. Informative and fun, it's a great place to hear the unexpurgated view of Christopher Ward of London!

CHR. WARD

L O N D O N

HEAD OFFICE

Christopher Ward (London) Limited,
1 Park Street, Maidenhead,
Berkshire SL6 1SL United Kingdom
+44 (0)1628 763040

CUSTOMER SERVICES

UNITED KINGDOM: +44 (0)1628 763040
UNITED STATES OF AMERICA: 1.877.226.8224
customerservices@christopherward.co.uk
technical@christopherward.co.uk

WEBSITE

www.christopherward.co.uk
www.christopherward.com
www.christopherward.eu