



## The Twelve 660

Owner's handbook



## Time on your side

Your Twelve 660 watch has been designed in England and handbuilt in Switzerland by highly talented craftspeople. This ensures not only accurate and precise timekeeping, but also brings a real pride of ownership that only watches of the highest quality standards can hope to deliver.

You have made an investment, a good one, and the aim of this handbook is to help you make the most of that investment in what we hope will be a lifetime of ownership.

**Mike France**

CEO & co-founder



 Christopher  
Ward



## The features and technical details of your Twelve 660

- Swiss made
- Elaboré 'Colimaçoné', vertical brushed and sandblasted finish on the movement
- Sunray brushed wheels on the movement
- Embossed push-in crown
- Exhibition caseback
- The BLK model features a DLC (Diamond-Like Carbon) coating for enhanced surface hardness (660 HV)
- Unique engraved serial number
- Anti-reflective box sapphire crystal
- Grained surface on dial
- Top-Brushed with diamond polished facets on indexes and hands

Calibre:	Sellita SW210-1 b
Jewels:	18
Power reserve:	42-45 hours
Frequency:	28,800vph (4Hz)
Power reserve:	42-45 hours
Timing tolerance:	+/-15 secs per day
Complication:	Central hacking seconds
Material:	Steel
Diameter/Weight:	38mm:38g
Height:	6.6mm
Water resistance:	3 ATM (30 meters)
Strap width:	23.3mm integrated



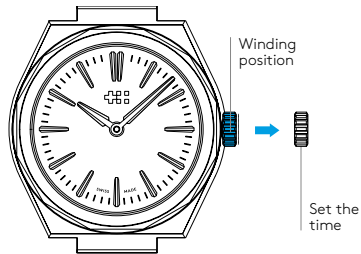
## Setting the time

Wind in a clockwise direction to re-power the watch in position 1.

Pull gently into position 2. This position is used for handsetting and hacking of the movement.

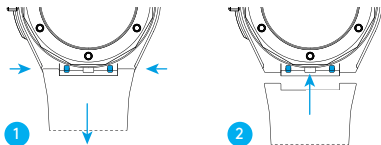
For precise time setting it is recommended to pass beyond the desired minute and to set the hand backwards.

Starting from a stopped state, a minimum of 23 full crown revolutions is required to achieve a full power reserve. Do not wind beyond the point of resistance.

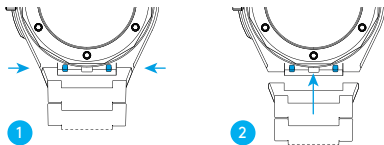


## Changing your strap

- 1 Locate the quick-release pins on the underside of your case. Pinch the pins inwards to detach.
- 2 To reattach your strap or bracelet, pinch the pins inwards, and align the spring bars so they click securely into the lug holes on either side of the strap or bracelet.



## Detaching and reattaching a bracelet





## Servicing your watch

Our approach to service is about uncompromised quality and great value for money. The process, led by our expert technicians, won't cost the earth and will have the watch back on your wrist in reasonable time. We recommend you service your watch every three to four years to keep it in peak condition.



## Your 60|60 Guarantee

Your Christopher Ward watch is covered by our industry-leading 60|60 Guarantee.

This means that you can return it 60 days after purchase and receive a full refund (as long as the watch is in perfect condition).

And if your watch develops a mechanical fault within five years (60 months), we'll repair it for free. Please use the warranty card to arrange this.

If you ever need to get hold of us we're at your service. And if you'd like to explore the CW world more, you can follow us on social media.



ChristopherWardLondon



@chriswardlondon