

C50 Malvern Chronometer  
50-piece Special Limited Edition  
Owner's handbook

**Christopher  
Ward**

## Time on your side...

Your Christopher Ward watch has been designed and engineered by highly talented craftspeople to ensure not only accurate and precise timekeeping but also to bring a real pride of ownership that only luxury items of the highest quality can ever hope to deliver.

You have made an investment, a good one, and the aim of this handbook is to help you make the most of that investment during what I hope will be a lifetime of ownership.



Christopher Ward

### Contents

C50 Malvern Chronometer	2
Technical information	4
How to operate your Malvern Chronometer	6-10
Our watch care programme	11
Keeping in touch	12

## C50 Malvern Chronometer

50-piece Special Limited Edition

**The C50 Malvern Chronometer is a watch that inhabits a unique position in the Christopher Ward range. As you'd expect for a watch under the Malvern banner, it's a classically elegant dress piece; it features our Mk II Malvern case, too (and will be the last CW to do so).**

Yet, with the movement found within – the Swiss-made ETA 2836, COSC-certified and with day date functionality – shares more in common with the premium horology of our Grand Malvern Collection. But the C50 exists within a wholly separate price bracket; in fact, it may be one of the most affordable mechanical chronometer-certified models available anywhere in the world.

The Malvern's dial design is timeless. Finished in a rich sunray blue, allowing optimum play with the light, polished steel indexes have been applied at five minute intervals, while the Mk II Malvern steel hour, minutes and second hands contrast strongly and ensure legibility.

Combined with the distinctive curved bezel and straight sided profile of our Mk II Malvern case, not only does the Malvern Chronometer blend aesthetic and horological prowess, it also provides the perfect send off to our trusty case design. Limited to 50 pieces as it is, the C50's legacy is confirmed.





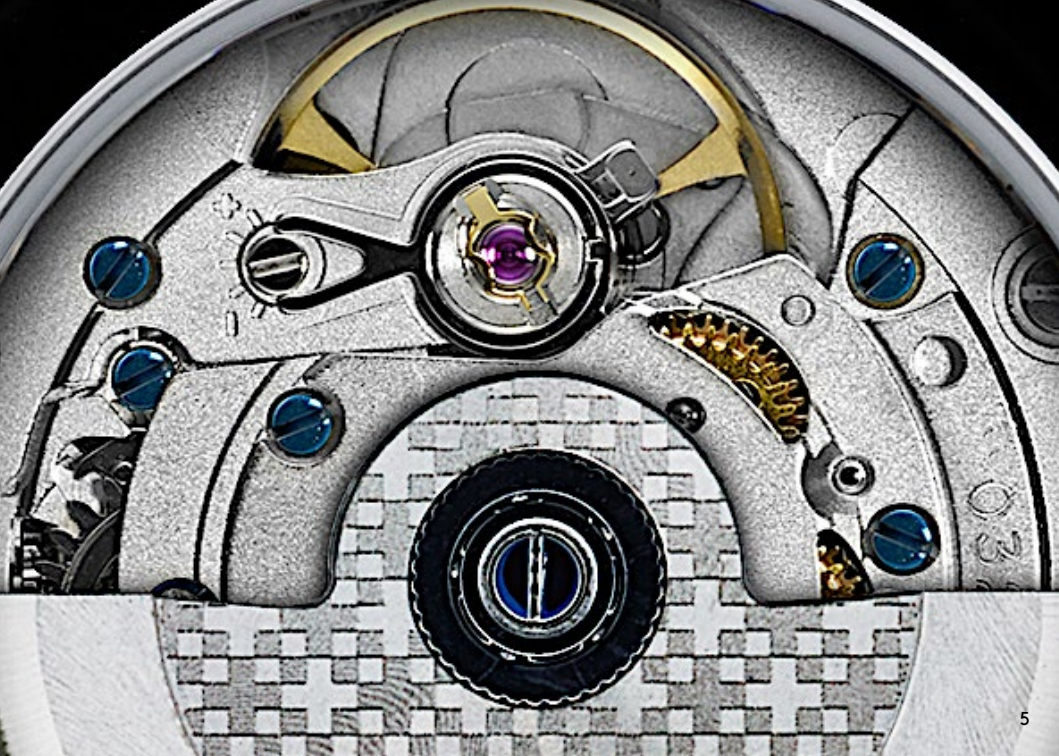
## Technical information

### Features

- Swiss made
- Limited edition of 50 pieces
- 25 jewel self-winding mechanical chronometer
- 38 hour power reserve
- Unique twin-flag engraving over 'Colimaçoné' finish on the rotor
- 39mm steel case with fully polished sides
- Screw-in crown with twin flag motif
- Anti-reflective sapphire crystal
- Blue sunray finish dial
- Date window revealing date disc
- Polished hour, minute and central second hands
- Screw-down exhibition caseback with engraved serial number
- Italian hand-stitched Shell Cordovan quick-release strap with Bader deployment

### Technical

<b>Diameter:</b>	39mm
<b>Height:</b>	10.8mm
<b>Weight:</b>	78g
<b>Calibre:</b>	ETA 2836 COSC
<b>Case:</b>	316L stainless steel
<b>Water Resistance:</b>	3 ATM (30 metres)
<b>Vibrations:</b>	28,800 per hour (4Hz)
<b>Timing tolerance:</b>	-4/+6 secs per day
<b>Lug to lug:</b>	45.8mm
<b>Strap:</b>	18mm

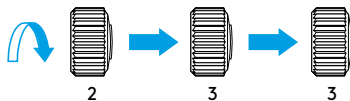


## Setting the time/date



1. Crown screw-in position
2. Manual winding
3. Date setting
4. Time setting

*Unscrew and then pull out*



For a superior water resistance your crown is of the screw-in type. The crown should sit flush to the case (position **1**) in order to maintain water resistance.

- First unscrew the crown anti-clockwise from the case to position **2** for winding in power. Wind in a clockwise direction to re-power the watch. Your C50 Malvern COSC has a maximum power reserve of 38 hours when fully wound. After a period of non-use, we recommend manually winding the watch to ensure the rotor weight sustains the amount of power in the mainspring whilst worn on your wrist – this can be done via twenty full revolutions of the crown.
- Pull gently into position **3**. For rapid day correction, turn in an anti-clockwise direction. For rapid date correction, turn in a clockwise direction.
- Pull gently into position **4**. This position is used for handsetting and stopping of the second hand. For precise time setting it is recommended to pass beyond the desired minute and to set the hand backwards.

**PLEASE NOTE:** Date correction should not be carried out between 20.00 hr and 02.00 hr as the watch gearing will already be aligning itself to change the date. The crown should always be pushed in after adjustment, and it is best to do so from position **3** to avoid advancing beyond the desired date.

You must always ensure the crown is fully tightened before any use in water.



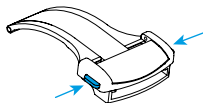
## Straps and bracelets

As you would expect, we place as much emphasis on the quality of our straps and bracelets as we do our watches. We only use the finest leathers for our straps. Similarly, we only use the finest metals in the construction of our bracelets, all of which are precision engineered for durability, efficiency and comfort.

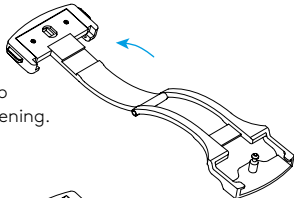
The following guidelines explain how easy it is to use and adjust your Christopher Ward strap or bracelet.

### Leather strap with Bader deployment

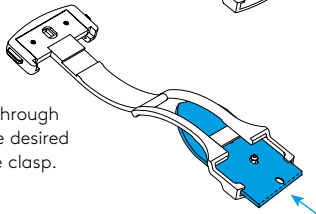
1.  
Press to release.



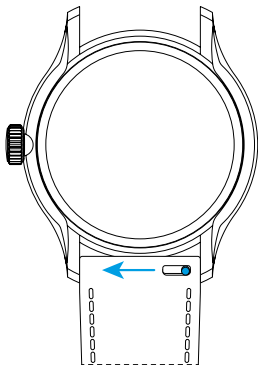
2.  
Pull open the clasp  
and locate the opening.



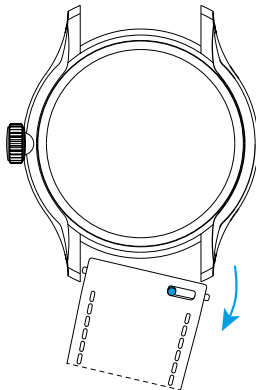
3.  
Thread the strap through  
the opening to the desired  
position. Close the clasp.



## Using the quick-release pins on your strap



1. Locate the quick-release pin on your strap.  
Pull the pin to the side to detach your strap.



2. To reattach your strap, align the pins to the lug holes and click the strap into position.  
Repeat for the other side.

## Water resistance

Although your watch has been through vigorous static pressure testing, it is worth remembering that there are many variables that can affect the water resistance of your watch.

For instance, arm movements during swimming and the sudden impact of diving and water sports will drastically increase the pressure the watch is under. Wearing your watch in the bath, shower, or sauna can also have an effect as a rapid increase in temperature can cause seals to expand and in extreme cases, malfunction or create condensation.

For these reasons, the water resistance rating of your watch (as shown) should only ever be considered a guideline and we strongly recommend they are always adhered to.



### **1 ATM (10 metres)**

Safe to wear your watch while washing your hands with tap water.



### **3 ATM (30 metres)**

Washing your car and/or general hose pipe usage.



### **5 ATM (50 metres)**

Water resistant to most household shower units.



### **15 ATM (150 metres)**

Safe to use while snorkelling in open water.



### **30 ATM (300 metres)**

Ideal for experienced divers and those practising scuba-diving.



### **60 ATM (600 metres)**

Professional divers, experiencing prolonged exposure underwater.



### **100 ATM (1000 metres)**

Professional deep sea diving.

## Our watch care programme

Your watch is constructed from the finest components and materials available including one of Switzerland's finest mechanical movements. As with all watches of this quality, with the right care and attention, your new Christopher Ward watch has the potential to become an heirloom piece giving further joy to future generations. It's for this reason we have created our industry leading approach to after-sales care, starting with our famous 60|60 Guarantee which remains the most comprehensive guarantee in the world of watchmaking.

Visit our website for more details about our 60|60 Guarantee and Service and Repair Programme.

### **60|60 Guarantee**

#### **1. 60 Day free returns**

Our success depends on you being completely happy with your new Christopher Ward watch. You have up to 60 days to return your watch, absolutely free of charge, and receive a replacement or full refund by return – so long as it has not been worn and is returned in perfect condition.

#### **2. 60 Month movement guarantee**

Your watch, at its heart, has a top quality precision engineered Swiss movement – so it's very unlikely to give you problems with the minimum amount of care and attention, including a regular service. We recommend you return your watch to us every 3/4 years for a service, so our expert technicians can keep your fine timepiece in peak condition.

### **Servicing and repairs...the Christopher Ward way...**

Our innovative approach to servicing and repairing your Christopher Ward watch means that having your watch serviced or repaired doesn't mean months of waiting followed by an exorbitant bill – which is more or less the experience guaranteed by every other luxury watch brand. We have developed an easy, quick and affordable expert service and repairs programme that doesn't cost the earth and has your watch back where it belongs – on your wrist – in double-quick time.

## Keeping in touch with Christopher Ward

From small beginnings just a few short years ago (our first workshop was actually a refurbished chicken shed!), Christopher Ward has won a worldwide following for his eponymous watch brand and can justifiably claim to manufacture the most affordable luxury watches in the world.

For many, the philosophy behind the brand, of trying to put luxury watches within the reach of everyone, is as attractive as the watches themselves, as is the very open approach of the business which means that Chris and the team spend a lot of time communicating personally with our customers – many of whom have become friends.

As the owner of a Christopher Ward watch, if ever you need to get hold of us we are at your service. We have listed some useful contact details on the back cover.

There is also always something new going on at our website at **[www.christopherward.co.uk](http://www.christopherward.co.uk)** and, if you haven't already discovered the independent forum dedicated to our brand at **[www.christopherwardforum.com](http://www.christopherwardforum.com)** we would recommend a visit. Informative and fun, it's a great place to hear the unexpurgated view of Christopher Ward.



**Head Office**

1 Park Street, Maidenhead,  
Berkshire SL6 1SL  
United Kingdom

**Customer Services**

UK: +44 (0)1628 763040  
USA: +44 (0)1.877.226.8224  
[customerservices@christopherward.co.uk](mailto:customerservices@christopherward.co.uk)  
[technical@christopherward.co.uk](mailto:technical@christopherward.co.uk)

[christopherward.co.uk](http://christopherward.co.uk)