

**C7** RAPIDE CHRONOMETER  
LIMITED EDITION

OWNER'S HANDBOOK

CHR. WARD  
L O N D O N

## TIME ON YOUR SIDE...

Your Christopher Ward watch has been designed and engineered by highly talented craftspeople to ensure not only accurate and precise timekeeping but also to bring a real pride of ownership that only luxury items of the highest quality can ever hope to deliver.

You have made an investment, a good one, and the aim of this handbook is to help you make the most of that investment during what I hope will be a lifetime of ownership.

A handwritten signature in black ink, appearing to read 'Chris', with a stylized flourish at the end.

Christopher Ward

### CONTENTS

C7 RAPIDE CHRONOMETER	2-3
TECHNICAL INFORMATION	4-5
OPERATING INSTRUCTIONS	6-21
OUR WATCH CARE PROGRAMME	22-23
GETTING IN TOUCH	24

## C7 RAPIDE CHRONOMETER

What better way to perfectly capture the spirit of the track than in the release of a Chronometer version of the ever-popular C7 Rapide Chronograph Mark II – v390.

The new model is powered by the thermo-compensated ETA 251.264 quartz movement , its COSC certification setting a new benchmark of precision in bringing chronometer status to the C7 Rapide family, making it not only one of the most stunning of our motorsport watches, but also the most accurate. The dial represents the sub-division of time and measurement in highly visible detail, while the watch's tachymeter provides an invaluable tool for on-track timekeeping.

Ad genus set vivere – to race is to live – has long been the credo by which our Motorsport Collection is created, and never more accurately realised than in this new edition,



representing the pinnacle of both achievement and accuracy on the race track.

The C7 COSC is a limited edition of only 500 pieces worldwide



## TECHNICAL INFORMATION

### FEATURES

- Swiss made chronometer
- Limited edition of 500 pieces worldwide
- 27 jewel Swiss quartz movement and COSC Certification
- Chronograph dials with split minutes/ seconds/ 1/10th seconds
- Thermo-compensated
- Sapphire crystal
- Multi-layered precision dial
- Tachymeter
- Marine-grade stainless steel case with screw-in crown
- Unique engraved individual serial number
- Premium quality Italian leather strap including Bader deployment, stainless steel adjustable bracelet or high density natural rubber strap

### TECHNICAL INFORMATION

Diameter:	42mm
Height:	11.8mm
Weight:	87g
Calibre:	ETA 251.264 COSC
Case:	316L stainless steel
Water Resistance:	10 BAR (100 metres)
Strap:	22mm





# HOW TO OPERATE YOUR C7 RAPIDE CHRONOMETER

The background of the slide is a detailed, monochromatic blue-toned image of a chronometer face. It features a large outer scale with markings from 0 to 60, and several sub-dials: a 12-hour sub-dial at the top left, a 15-minute sub-dial at the top right, and a 60-second sub-dial at the bottom center. The hands are thin and light-colored, contrasting with the darker blue background.

## DISPLAY AND CONTROL BUTTONS

### DISPLAY ELEMENTS

Minute hand

Tenths counter

Minute counter

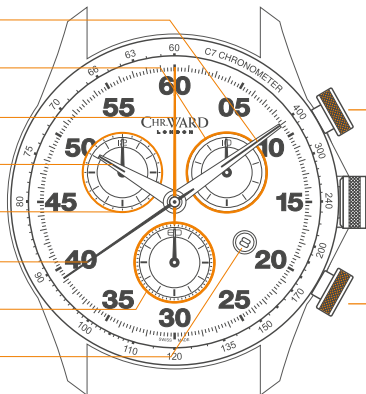
Hour hand

Hours counter

Centre stop-second

Seconds

Date window



### CONTROL BUTTONS

Push-button A

Crown

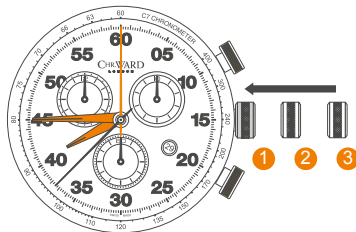
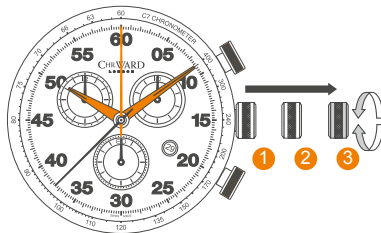
Push-button B



## SETTING THE TIME

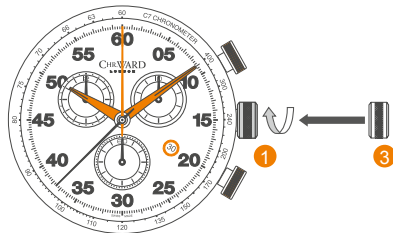
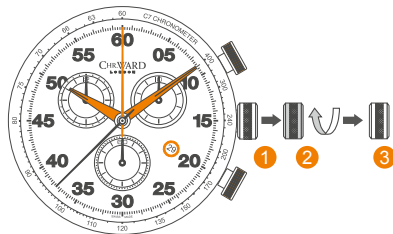
For a superior water resistance your crown is of the screw-in type. To get to position ① turn the crown anti-clockwise until it releases itself.

- Pull out the crown to position ③ (the watch stops).
- Turn the crown until you reach the correct time e.g. **08.45 hr.**
- Push the crown back into position ① and screw the crown in a clockwise direction in order to maintain water resistance. The crown should sit flush to the case.



## SETTING DATE (QUICK MODE)

- Pull out the crown to position **2** (the watch continues to run).
- Turn the crown clockwise, the hour hand moves in one hour increments until the correct date appears.
- Pull the crown to position **3**
- Push the crown back into position **1** until flush with the case and screw in.



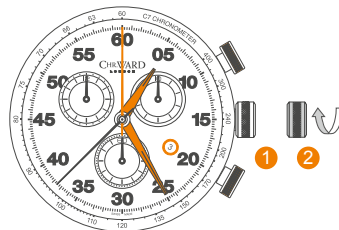
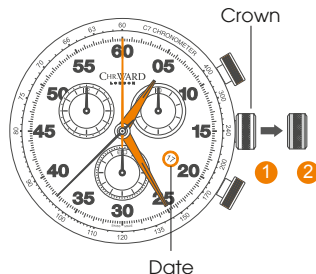
## SETTING THE DATE/TIME

### Example:

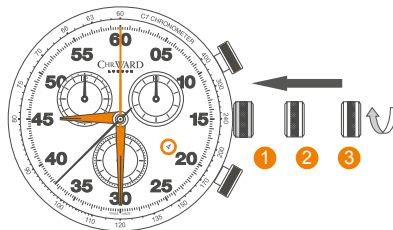
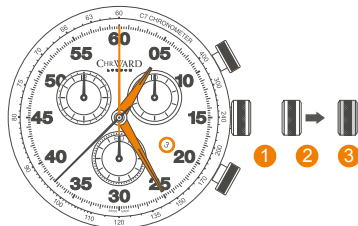
Date / time on the watch: **17th / 01.25 hr**

Present date / time: **4th / 21.25 hr**

- Pull out the crown to position **2** (the watch continues to run).
- Turn the crown clockwise until yesterday's date appears ie. **3rd**.



- Pull out the crown to position **3** (the watch stops).
- Turn the crown clockwise until the correct date ie. 4th appears (after passing through midnight).
- Continue to turn the crown until the correct time 21.30 hr appears.
- Push the crown back into position **1** until flush with the case and screw in.



## CHRONOGRAPH FUNCTIONS:

### DISPLAY ELEMENTS

Tenths counter

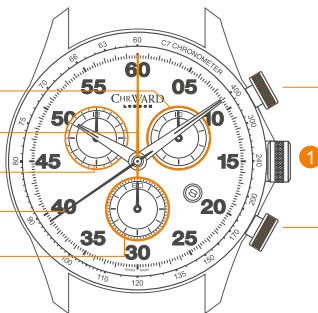
Minute counter

Hours counter

Centre stop-second counter

Seconds

- The **hour counter** measures 12 hours per rotation.
- The **minute counter** measures 60 minutes per rotation.
- The **centre stop-second counter** measures 60 seconds per rotation.
- The **1/10 second counter** measures 1 second per rotation.



### CONTROL BUTTONS

Push-button A  
(Start / Stop)

Push-button B  
(Reset)

PLEASE NOTE: Before using the chronograph functions, please ensure that:

- The crown is in position **1** (screwed in).
- The 4 chronograph hands are at zero position. Should this not be the case, the positions of the hands must be adjusted (see the chapter entitled 'Adjusting the chronograph hands to zero position' on page 16).

## BASIC FUNCTIONS

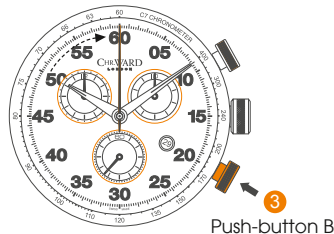
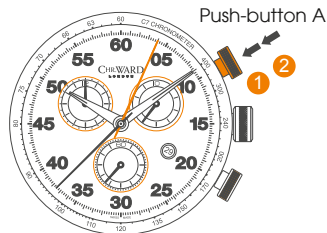
### (START / STOP / RESET)

#### Example:

- 1 **Start:** Press push-button A.
- 2 **Stop:** to stop the timing, press push-button A once more and read the 4 chronograph counters: 4 min / 38 sec / 7/10 sec.
- 3 **Zero positioning:**  
Press push-button B. (The 4 chronograph hands will be reset to their zero positions).

#### Example of use:

Timing a runner over 100m.



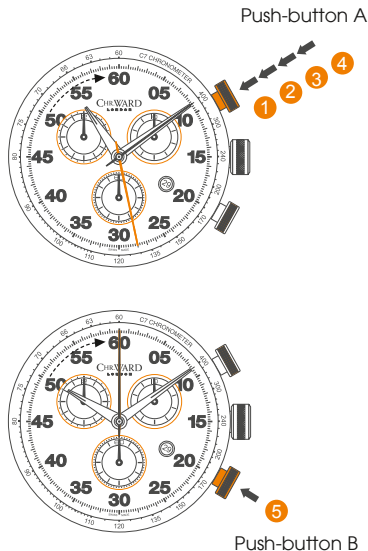
## ACCUMULATED TIMING

### Example:

- ➊ **Start:** (start timing).
- ➋ **Stop:** (e.g. 15 min 5 sec following ➊).
- ➌ **Restart:** (timing is resumed).
- ➍ **Stop:** (e.g. 13 min 5 sec following ➌).  
= 28 min 10 sec (accumulated measured time is shown)
- ➎ **Reset:** The 4 chronograph hands are returned to their zero positions.
- ➏ **Repeat:** as necessary.

### Example of use:

Overall time to complete a journey less the coffee breaks.



**1 Start:** (start timing).

- 2 Display interval:**  
e.g. 15 minutes 9 seconds (timing continues in the background).

- \* **③ Making up the measured time:**  
(the 4 chronograph hands are quickly advanced to the ongoing measured time).

- 4 Stop:** (final time is displayed).

- 5 Reset:** The 4 chronograph hands are returned to their zero positions.

\* Following **3**, further intervals or intermediates can be displayed by pressing **push-button B**.

**Example of use:** 4 x 100m relay.



Push-button B

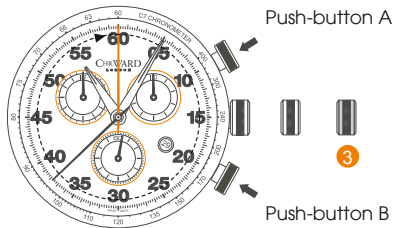
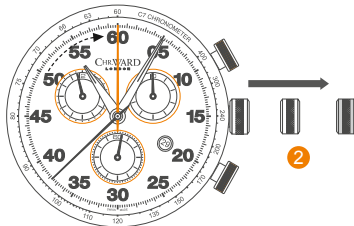


## ADJUSTING CHRONOGRAPH HANDS TO ZERO POSITION

### Example:

One or several chronograph hands are not in their correct zero positions and have to be adjusted (e.g. following a battery change).

- Pull out the crown to position **2** press **Button A** to adjust the hour chronograph hand and **Button B** to reset the 60 minute counter to zero
- Pull out the crown to position **3**. Push **Button A** to adjust the stop second hand and **Button B** to adjust the tenths seconds hand.







SWISS MADE COSC CERTIFIED CHRONOMETER

## WATER RESISTANCE

Although your watch has been through vigorous static pressure testing, it is worth remembering that there are many variables that can affect the water resistance of your watch.

For instance, arm movements during swimming and the sudden impact of diving and water sports will drastically increase the pressure the watch is under. Wearing your watch in the bath, shower, or sauna can also have an effect as a rapid increase in temperature can cause seals to expand and in extreme cases, malfunction or create condensation.

For these reasons, the water resistance rating of your watch (as shown) **should only ever be considered a guideline** and we strongly recommend they are always adhered to.



### **1 BAR (10 METRES)**

Safe to wear your watch while washing your hands with tap water.



### **3 BAR (30 METRES)**

Washing your car and/or general hose pipe usage.



### **5 BAR (50 METRES)**

Water resistant to most household shower units.



### **10 BAR (100 METRES)**

Safe to use while snorkelling in open water.



### **30 BAR (300 METRES)**

Ideal for experienced divers and those practising scuba-diving.



### **50 BAR (500 METRES)**

Professional divers, experiencing prolonged exposure underwater.



### **100 BAR (1000 METRES)**

Professional deep sea diving.

## STRAPS & BRACELETS

As you would expect, we place as much emphasis on the quality of our straps and bracelets as we do our watches. We only use the finest leathers for our straps and our premium alligator straps are all ethically sourced from CITES approved farms in Louisiana.

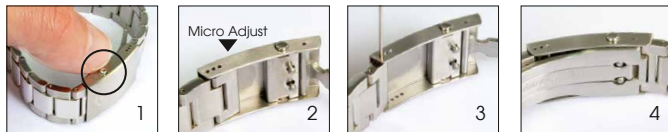
Similarly, we only use the finest metals in the construction of our bracelets, all of which are precision engineered for durability, efficiency and comfort. The following guidelines explain how easy it is to use and adjust your Christopher Ward strap or bracelet.

### LEATHER STRAP WITH BADER DEPLOYMENT



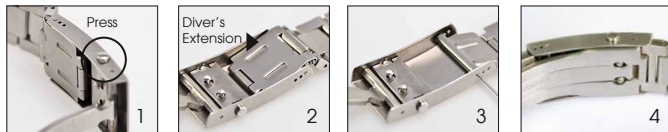
1. Press to release
2. Pull open the clasp
3. Locate the opening and thread the strap through
4. Close the clasp

## BRACELET WITH MICRO-ADJUSTMENT



1. Press to release
2. Locate adjusting pin
3. Adjust pin position
4. Close the clasp

## DIVER'S EXTENSION (WHERE APPLICABLE)



1. Press to release
2. Locate divers extension
3. Expand extension
4. Close the clasp

# OUR WATCH CARE PROGRAMME

Your watch is constructed from the finest components and materials available, including one of Switzerland's finest quartz movements. As with all watches of this quality, with the right care and attention, your new Christopher Ward watch has the potential to become an heirloom piece giving further joy to future generations. It's for this reason we have created our industry leading approach to after-sales care, starting with our famous 60/60 Guarantee which remains the most comprehensive guarantee in the world of watchmaking.

Christopher Ward's 60/60 Guarantee is designed to deliver complete peace of mind and the best support possible throughout the lifetime of your ownership. The guarantee has two key elements and sits alongside our Servicing and Repairs Programme:

## **60/60 GUARANTEE**

### **1. 60 DAY FREE RETURNS**

Our success depends on you being completely happy with your new Christopher Ward watch. You have up to 60 days to return your watch, absolutely free of charge, and receive a replacement or full refund by return – so long as it has not been worn and is returned in box-perfect condition.

### **2. 60 MONTH MOVEMENT GUARANTEE**

Your watch, at its heart, has a top quality precision engineered Swiss movement – so it's very unlikely to give you problems with the minimum amount of care and attention, including a regular service. We recommend you return your watch to us every 3/4 years for a service, so our expert technicians can keep your fine timepiece in peak condition. (We recommend that whenever your quartz battery needs changing you consider having the watch serviced at the same time to keep it in perfect working order.)

## **SERVICING & REPAIRS...THE CHRISTOPHER WARD WAY...**

Our innovative approach to servicing and repairing your Christopher Ward watch means that having your watch serviced or repaired doesn't mean months of waiting followed by an exorbitant bill – which is more or less the experience guaranteed by every other luxury watch brand. We have developed an easy, quick and affordable expert service and repairs programme that doesn't cost the earth and has your watch back where it belongs – on your wrist – in double-quick time.

Visit our website for more details about our 60/60 Guarantee and Service and Repair Programme.



## KEEPING IN TOUCH WITH CHRISTOPHER WARD

From small beginnings just a few short years ago (our first workshop was actually a refurbished chicken shed!), Christopher Ward has won a worldwide following for his eponymous watch brand and can justifiably claim to manufacture the most affordable luxury watches in the world.

For many, the philosophy behind the brand, of trying to put luxury watches within the reach of everyone, is as attractive as the watches themselves, as is the very open approach of the business which means that Chris and the team spend a lot of time communicating personally with our customers – many of whom have become friends.

As the owner of a Christopher Ward watch, if ever you need to get hold of us we are at your service. We have listed some useful contact details on the back cover.

There is also always something new going on at our website at **[www.christopherward.co.uk](http://www.christopherward.co.uk)** and, if you haven't already discovered the independent forum dedicated to our brand at **[www.christopherwardforum.com](http://www.christopherwardforum.com)** we would recommend a visit. Informative and fun, it's a great place to hear the unexpurgated view of Christopher Ward of London!

# CHR. WARD

L O N D O N

## HEAD OFFICE

Christopher Ward (London) Limited,  
1 Park Street, Maidenhead,  
Berkshire SL6 1SL United Kingdom  
+44 (0)1628 763040

## CUSTOMER SERVICES

UNITED KINGDOM: +44 (0)1628 763040  
UNITED STATES OF AMERICA: 1.877.226.8224  
customerservices@christopherward.co.uk  
technical@christopherward.co.uk

## WEBSITE

[www.christopherward.co.uk](http://www.christopherward.co.uk)  
[www.christopherward.com](http://www.christopherward.com)  
[www.christopherward.eu](http://www.christopherward.eu)