



C63 Sealander GMT

Owner's handbook



Time on your side

Your C63 Sealander GMT watch has been designed in England and handbuilt in Switzerland by highly talented craftspeople. This ensures not only accurate and precise timekeeping, but also brings a real pride of ownership that only watches of the highest quality standards can hope to deliver.

You have made an investment, a good one, and the aim of this handbook is to help you make the most of that investment in what we hope will be a lifetime of ownership.

Mike France
CEO & co-founder

Mike

 **Christopher
Ward**



The features and technical details of your C63 Sealander GMT

- Swiss Made
- Automatic mechanical GMT movement
- Elaboré-grade Colimaçoné movement finishing with twin-flags engraved rotor
- Brushed and polished marine-grade stainless steel case
- Fixed stainless steel bezel with black lacquer filling
- Tapered, embossed screw-down crown and exhibition caseback
- Anti-reflective sapphire crystal
- Polished lacquer dial
- Diamond-polished applied indexes and hands with Super-LumiNova®, lacquered GMT hand
- Marine-grade stainless steel bracelet with engraved clasp, micro-adjustable ratchet clasp and quick-release system
- iLink™ “no tool” removable links for easy sizing

Calibre:	Sellita SW330-2
Jewels:	25
Frequency:	28,800 vph (4Hz)
Power reserve:	50-56 hours
Timing tolerance	-5/+12 secs per day
Complication:	Automatic, Date, GMT
Material:	Stainless steel
Diameter/Weight:	36mm : 50g 39mm : 60g 42mm : 73g
Height:	11.30mm
Lume:	Super-LumiNova® Grade X1 BL C1
Water resistance:	15 ATM (150 metres)
Strap width:	36mm : 20mm 39mm : 20mm 42mm : 22mm

Setting the time, date and GMT hand

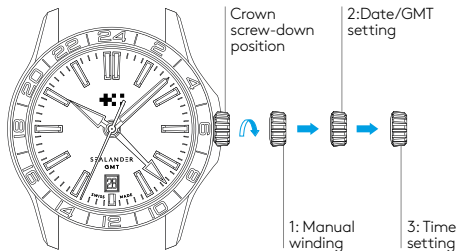
Unscrew the crown* anti-clockwise from the case to position 1 for winding in power. Wind in a clockwise direction to re-power the watch.

To set the date pull gently into position 2 and turn in an anti-clockwise direction.

To set the GMT hand, turn the crown clockwise and rotate the hand until you have reached the desired time indication. The GMT hand moves in one-hour increments.

Pull gently into position 3 This position is used for handsetting and stopping of the seconds hand. For precise time setting it is recommended to pass beyond the desired minute and to set the hand backwards.

*The screw-down crown should sit flush to the case (closed position) in order to maintain water resistance.



Date correction should not be carried out between 20:00 hrs to 2:00 hrs as the watch gear will already be aligning itself to change the date.

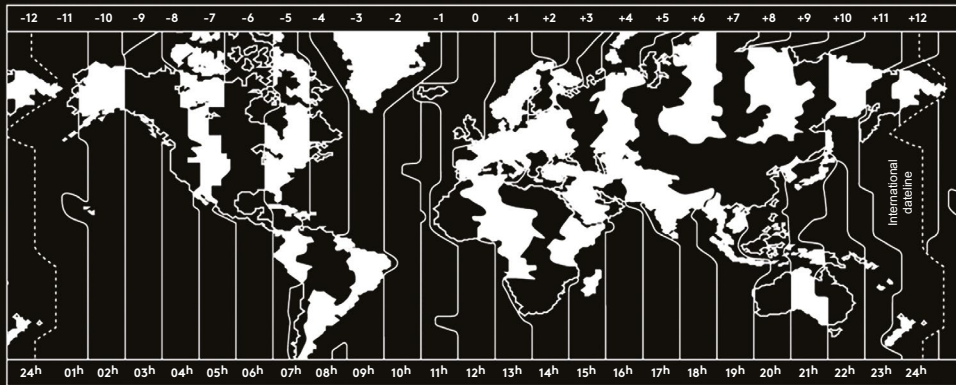
Using the GMT hand for travel

Set the time in your new destination by pulling the crown into position 3 and move the hour/minute hands until they indicate the desired time.

Push crown into position 2 and wind, clockwise, the GMT hand around the 24-hour scale on the bezel until you have the right time at home. E.g. If you're travelling from London at 12.10 to New York, you would turn the hour/minute hands to 7.10 (New York time is five hours behind London) and wind the GMT hand around to the 12.10 position.

Once set, it means that, for example, you can gauge the time to ring your friends and family without waking them in the middle of the night.

The table below can be used to determine the appropriate time zone when setting the hour/minute hands.

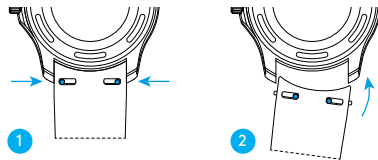




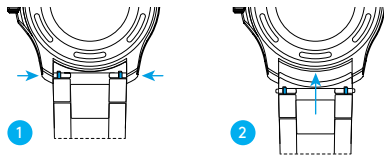
Changing your strap

- 1 Locate the quick-release pins on the underside of your case. Pinch the pins inwards to detach.
- 2 To reattach your strap or bracelet, pinch the pins inwards, and align the spring bars so they click securely into the lug holes on either side of the strap or bracelet.

Detaching and reattaching a strap

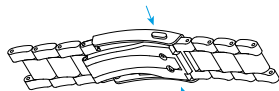


Detaching and reattaching a bracelet

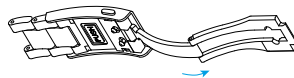


Using the micro adjustment on your bracelet

- 1 Press buttons to release.
- 2 Pull open the clasp.
- 3 There are three micro adjustment positions, which allows for a maximum extension of 6mm. To extend, push the button to unlock and simultaneously pull on the bracelet into the desired position.
- 4 To shorten, simply push the button and then slide the bracelet back into the clasp.



1



2



3

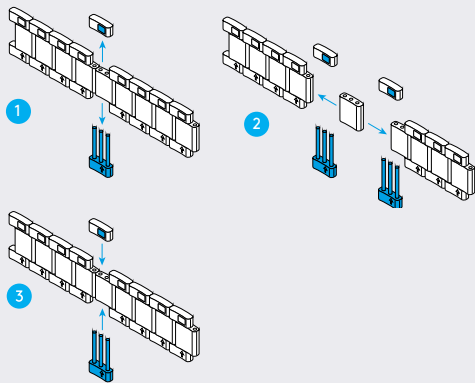


4

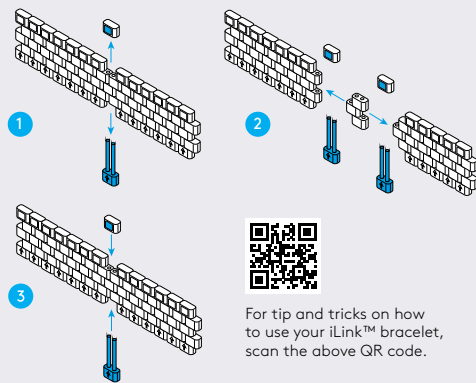
Using the iLink™ system on your bracelet

- 1 To carry out the adjustment, firstly take your bracelet off the head (using quick release) and lay it down flat. To release the top piece, pinch it between thumb and forefinger, using your thumbnail to press down on the button and pull upwards, then slide the bottom piece (arrow side) downwards out of the mid-link. The buttons are small and may require a pointed object (e.g. a toothpick) for easier operation. Avoid using metal objects, as they may scratch the surface.
- 2 Repeat on the adjacent button link, then slide out and remove the mid-link.
- 3 To reconnect, slide the bottom piece pins back through the remaining mid-link (align the arrow with the button). Then insert the top piece and press firmly until it clicks into place. Keep removed pieces safe for future adjustments.

Bader bracelet iLink™ system



Consort bracelet iLink™ system



For tip and tricks on how to use your iLink™ bracelet, scan the above QR code.

Servicing your watch

Our approach to service is about uncompromised quality and great value for money. The process, led by our expert technicians, won't cost the earth and will have the watch back on your wrist in reasonable time. We recommend you service your watch every three to four years to keep it in peak condition.



Your 60|60 Guarantee

Your Christopher Ward watch is covered by our industry-leading 60|60 Guarantee.

This means that you can return it 60 days after purchase and receive a full refund (as long as the watch is in perfect condition).

And if your watch develops a mechanical fault within five years (60 months), we'll repair it for free. Please use the warranty card opposite to arrange this.

If you ever need to get hold of us we're at your service. And if you'd like to explore the CW world more, you can follow us on social media.



ChristopherWardLondon



@chriswardlondon