

**C900** SINGLE PUSHER CHRONOGRAPH  
LIMITED EDITION

OWNER'S HANDBOOK

CHR. WARD  
L O N D O N

# WELCOME TO YOUR C900

Having taken possession of a C900 Chronograph, you are now the owner of a very special timepiece; a timepiece that has taken more than three years to create and one that everyone connected with Christopher Ward is immensely proud.

Two master watchmakers, Johannes Jahnke and Jean Fillon, worked with our design team in Maidenhead to realise Johannes's dream of allowing the owner of such a complicated movement to see and understand how the movement really works. The C900 is the realisation of that dream and is a perfect example of how, through innovative design as well as fair and honest pricing, Christopher Ward is determined to make fine watchmaking accessible to as many people as possible.

I encourage you to invest a little time in reading the following pages of this handbook which have been designed to help you maximise your enjoyment of your new watch. And should you ever wish or need to talk to me about your C900, you can contact me in the first instance by emailing, [chris@christopherward.co.uk](mailto:chris@christopherward.co.uk).

Kind regards,

A handwritten signature in black ink, appearing to read 'Chris', with a stylized flourish at the end.

Christopher Ward

# The C900 Story by Simon de Burton

Nothing unites young and old so effectively as a shared passion. For some it is sport, for others it might be music, art, classic cars, travel or history. But the common denominator which enabled 28-year-old Johannes Jahnke and 87-year-old Jean Fillon to form an almost instant bond is their mutual fascination for horology - or, more specifically, for solving the problems it so often produces.

Jean Fillon was just 24 years of age when he arrived at James Aubert, the Swiss movement manufacturer that had been established in the early 20th century to specialise in supplying chronograph mechanisms for the leading watch brands of the day.

Following founder James Aubert's death at the young age of 59, Fillon was recruited as a director of the company and expanded the business to include the production of stop watches designed for sport and aviation, which were sold under a variety of high quality dial names in Switzerland, Germany and Japan. James Aubert SA, as the company continues to be known, also developed complicated mechanisms for niche markets as well as more widely used products.

Today, more than 63 years after his arrival, Fillon still wields his watchmaker's tools with the deft hand of a far younger man while his mind is as quick as ever to find solutions to those tricky horological conundrums which leave the less experienced entirely stumped.

Johannes Jahnke, meanwhile, has already packed a remarkable number of achievements into his 28 years. Born in the former East Germany, he grew-up watching (and helping) his father repair everything from old watches to the family motorbike, a 1951 BMW, which had to be kept running as a matter of necessity.

After completing his military service, Jahnke studied in the famous watch-making town of Glashütte before becoming apprentice to Marco Lang, a fifth-generation watchmaker who was one of the founders of Dresden-based Lang & Heyne.

One of Lang's dreams was to establish an entirely electricity-free workshop in which components are made using manually-powered lathes – a return to the truly 'handmade' watch. It was an idea that Jahnke could relate to well as he had grown up having to make do and mend with only the most basic tools. It led to him making a prototype of a monopusher chronograph without resorting to modern machinery.

This resulted in the Lang & Heyne King Albert of Saxony watch, a £60,000 platinum work of art which was produced in tiny numbers.

Since 2008, however, Jahnke has worked with a small, high-end firm in the watchmaking town of Biel, which devises, develops and produces watch mechanisms for a few select watch brands – one of which is Christopher Ward.

Here, Jahnke is allowed to work without constraints and allowed to realise, or attempt to realise, his wildest watch-making dreams. When I visited him at his workshop in March, he had recently designed Christopher Ward's innovative Jumping Hour movement which, unusually, takes its power from the central-minutes wheel, resulting in more efficient energy use and greater accuracy than conventional jump hour mechanisms.



At the time, Jahnke told me of his latest project – the creation of another monopusher chronograph based on a highly modified Unitas movement. More than six months later, this has come to fruition in the form of Christopher Ward's most sophisticated and complex watch to date, the C900 SP – a beautifully understated, classic-looking chronograph powered by its own, exclusive, monopusher movement.

The tourbillon, the minute repeater and the perpetual calendar are often cited as representing the pinnacle of the watchmaker's art while the chronograph is regularly taken for granted. In reality, however, this mechanism which can accurately dice time into fractions of hours, minutes and seconds remains one of the most noble complications of all and is still among the most exacting to create – especially when its functions are controlled by one pusher rather than the usual two.

It is partly for that reason that this new movement has taken almost three years to develop following Jahnke's discovery of a prototype chronograph in 2009 which was based on the well known Unitas 6497 calibre. Jahnke was immediately taken with the thinking behind the mechanism, recognising similarities with the single pusher movement he had developed at Lang & Heyne for the aforementioned King Albert single pusher chronograph.

What really excited him about the Unitas project, however, was his belief that it could be extensively improved both mechanically and aesthetically in order to create a superbly clean and functional wristwatch – and one which would also offer instant appeal to horophiles due to the fact that the mechanics of the movement could be clearly seen and understood.

Jahnke did not, however, want to realise this new mechanism entirely alone and it is for that reason that he sought the collaboration of Fillon, whose knowledge of creating and manufacturing parts for chronograph movements had become the stuff of legend.

The prospect of working with such an industry veteran could have been daunting for Jahnke, who is Fillon's junior by more than half a century, but the old hand instantly recognised the abilities and talent of the younger man who quickly came to affectionately refer to his mentor as 'opi' or 'grandpa'.

Working together, the pair deconstructed the Unitas base and effectively re-designed its chronograph function with hand-drawn, annotated sketches that enabled Jahnke to then reconstruct the module using a CAD programme. The result was an extensively reworked movement with a new main plate, bridges, winding mechanism, centre and second wheels.

A swan neck adjustment system was added and a clean, uncluttered dial designed at the Christopher Ward studio that allows for the inclusion of a continuous seconds sub-dial and a 30-minute totaliser. Inverting the watch, however, reveals the beauty of the new movement in all its glory. A wide transparent case back allows the function of each component to be seen from the instant the single push piece is depressed to activate the clutch, sliding gear and intermediate wheel which engage the minute counter. Press the pusher again and the clutch separates, a brake lever is activated and the minute counter instantly stops.

'The C900 Single Pusher Chronograph is beyond question our most complicated watch to date and will make an entirely new level of sophistication accessible to more people than ever before because of the unique



Christopher Ward value equation,' explains Chris Ward.

'However, it's the magnificence of the movement that really moves me. I was completely transfixed when I first saw what Johannes had accomplished and I don't mind admitting that I almost cried with a combination of joy and pride.

We may produce even more complicated watches in the future but the C900 will always be a very special watch for me. The C900 SP 'owner's club' will not, however, be a crowded one. Due to the complexity of its movement, just 250 examples of the C900 SP, in this form, will be available worldwide.

# JOHANNES JAHNKE – CREATOR OF THE JJ02 CALIBRE

Born in East Germany, Johannes first dismantled and repaired a broken clock at the age of 12. Championed by Marco Heyne of Lang & Heyne, he first made a functional escapement model by building the wheels and cogs by hand. The “King Albert of Saxony” is a column-wheel chronograph with a central minute counter. The necessity for a vertical clutch, together with the position of the chronograph, makes this construction extremely challenging. With some assistance from Lang & Heyne, in 2006 Johannes finished his watch.

“When ‘King Albert of Saxony’ went on sale there was a lot of buzz about me being so young but I don’t think I am particularly special,” says Johannes. “A hundred years ago there were several watchmakers in their early twenties making wonderful watches – there just aren’t any now.”

In 2008 Johannes, eager to produce watches that were not merely the preserve of monied collectors, was asked to join Jörg Bader, Christopher Ward’s Swiss partner. The partnership with Christopher Ward that produced the exciting Single Pusher Chronograph suits Johannes particularly well as the relationship allows him to bring luxury watches within the reach of more people. He also appreciates the very close relationship the company has with its customers.

“There are a lot of barriers between watchmakers and their customers and that is a shame. Creating a watch for someone you don’t know and never hear from isn’t that rewarding.”

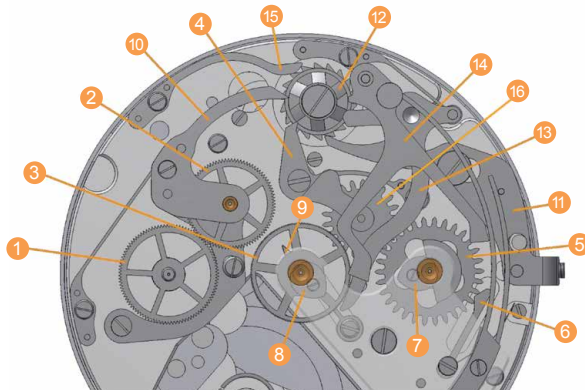




## INSIDE YOUR C900

The following pages are designed to give you a unique insight into how the JJ02 Calibre complication inside your C900 really works. Drawn from Johannes Jahnke's original CAD drawings, a little time studying them will not only give you a thorough understanding of how your watch works but also take you inside the mind of a master watchmaker.

# KEY COMPONENTS OF CALIBRE JJ02



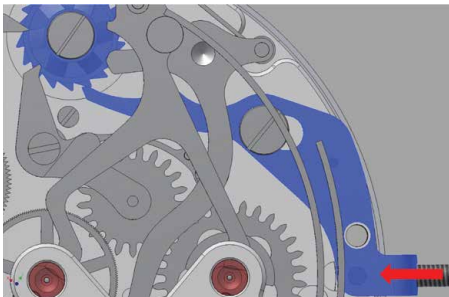
(Fig.1)

- |                             |                         |                        |                                      |
|-----------------------------|-------------------------|------------------------|--------------------------------------|
| 1 Second transmission wheel | 5 Minute counter        | 10 Clutch              | 15 Column wheel jumper               |
| 2 Intermediate wheel        | 6 Minute counter jumper | 11 Column wheel pusher | 16 Minute counter intermediate wheel |
| 3 Centre wheel              | 7 Minute counter heart  | 12 Column wheel        |                                      |
| 4 Sliding gear lever        | 8 Centre wheel heart    | 13 Break lever         |                                      |
|                             | 9 Finger-piece          | 14 Reset lever         |                                      |

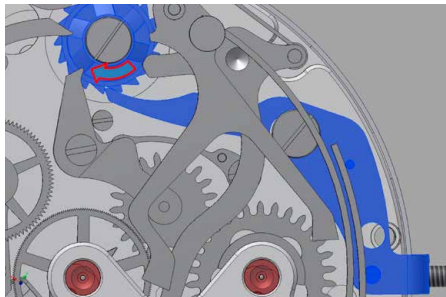
# THE 3 CYCLES OF THE SINGLE PUSHER MOVEMENT

## 1. Starting the chronograph

After pressing the Pusher (Fig 2) which sits inside the Crown, the *Column Wheel* pusher pushes the *Column Wheel* one cog forward. The *Column Wheel* has 18 teeth and turns 20 degrees per step. The *Column Wheel* Jumper locks the *Column Wheel* into the new position (Fig 3).

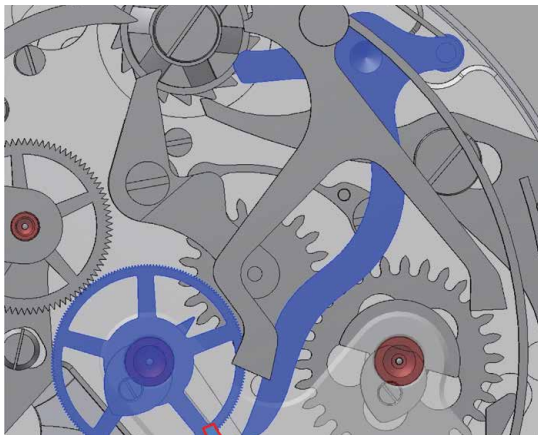


(Fig.2)



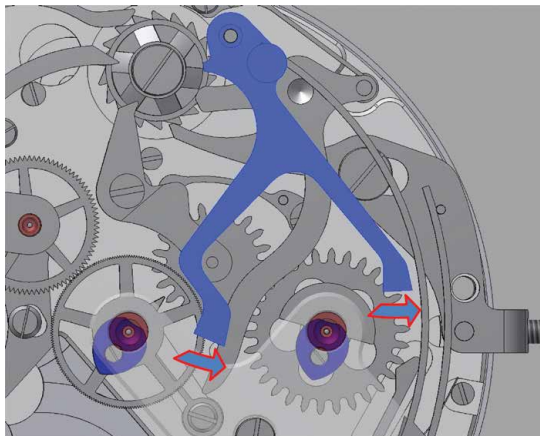
(Fig.3)

When the *Column Wheel* turns, the *Break Lever* releases the *Centre Wheel* (Fig 4).



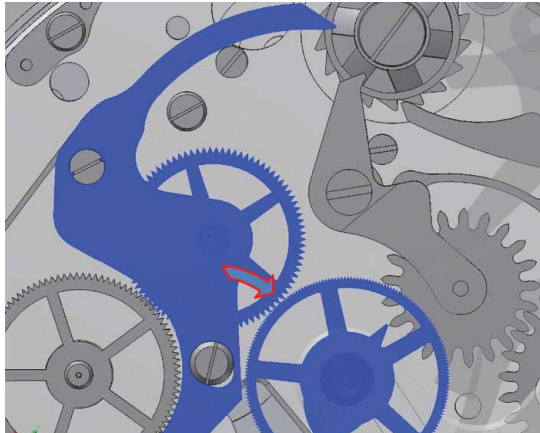
(Fig.4)

The *Reset Lever* now releases the *Heart* of the *Centre Wheel* and *Minute Counter Wheel* (Fig 5).



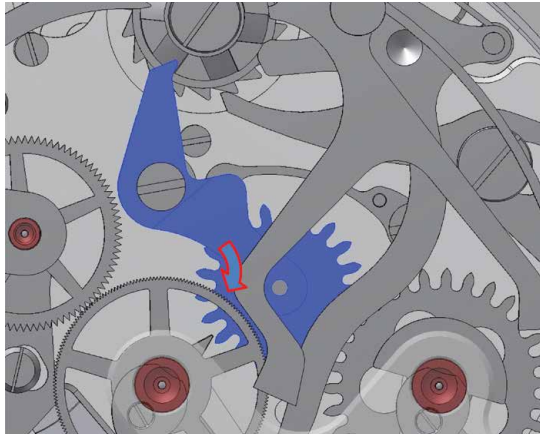
(Fig.5)

The *Clutch* falls into the space between the *Columns* so that the *Intermediate Wheel*, which turns continuously with the *Second Wheel*, is connected to the *Centre Wheel* (Fig 6). The *Centre Wheel* now turns in the same direction as the *Second Wheel*.



(Fig.6)

The *Sliding Gear Lever* falls between the *Columns* and the *Minute Counter Intermediate Wheel* moves to the centre and engages the *Minute Counter* (Fig 7).



(Fig.7)

The *Finger-Piece*, which is fixed to the *Centre Wheel*, pushes, after 60 seconds, one tooth of the *Minute Counter Intermediate Wheel*. The *Minute Counter Wheel* turns one step forward when the *Minute Counter Intermediate Wheel Jumper* rests between the next two teeth (Figs 8 & 9). This procedure repeats for as long as the chronograph is working.



(Fig.8)



(Fig.9)

## 2. Stopping the chronograph

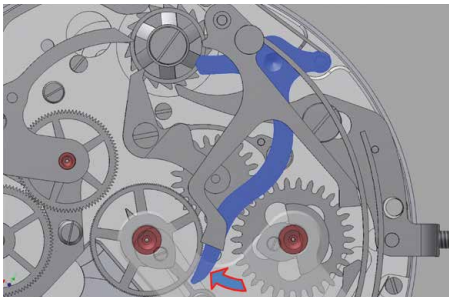
When you press the Pusher for a second time the chronograph stops (Fig 10).



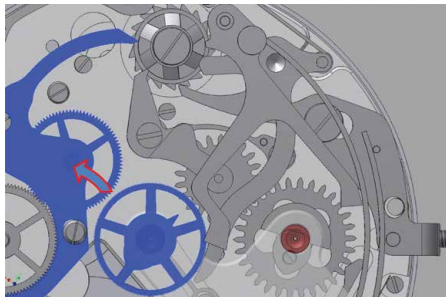
(Fig.10)

The *Column Wheel* turns one tooth forward, the *Brake Lever* falls into a space between the *Columns* and holds the *Centre Wheel* in position (Fig 11).

The *Clutch* separates the *Intermediate* and *Centre Wheels* (Fig 12).

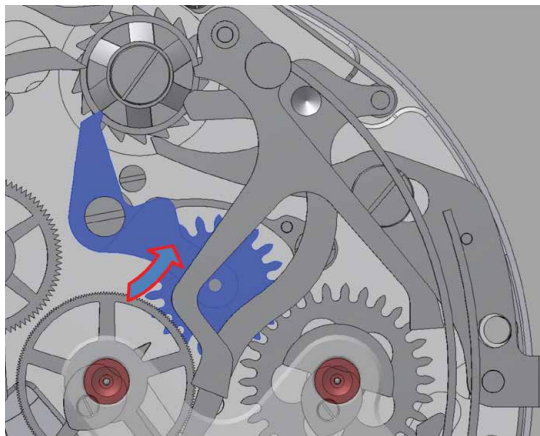


(Fig.11)



(Fig.12)

The *Sliding Gear Lever* moves out of the centre and separates the *Minute Counter Wheel* (Fig 13).



(Fig.13)

### 3. Re-setting the chronograph

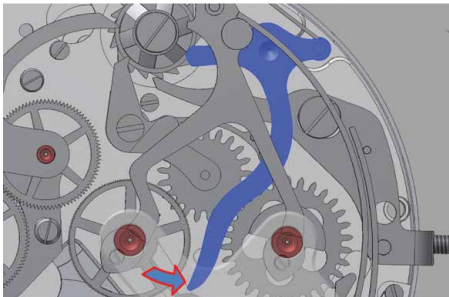
Pressing the pusher for a third time moves all the pieces of the chronograph back into the start position (Fig 14).



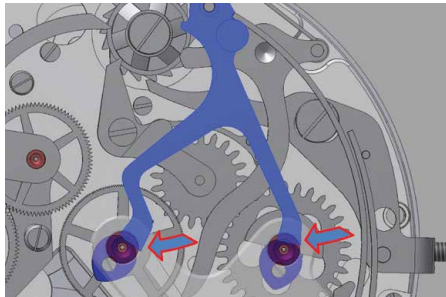
(Fig.14)

The *Column Wheel* again turns another single tooth forward. The *Brake Lever* releases the *Centre Wheel* (Fig 15).

The *Reset Lever* falls into space between the *Columns* and pushes the chronograph wheels back to the start position by turning the *Hearts* through pressure (Fig 16).



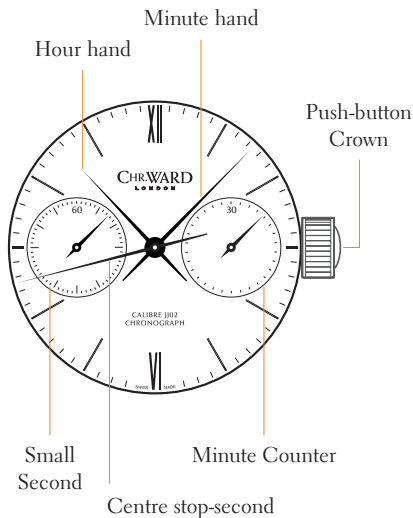
(Fig.15)



(Fig.16)



# DISPLAY AND CONTROLS



## DISPLAY ON DIAL

Center: chrono second

Left eye: Continuous second

Right eye: Minute counter (30 mins)

## 3 FUNCTIONS:

**Clutch:** separates/engages chrono function; sliding gear separates/engages minute counter

**Brake:** fixes stopped time

**Reset function**

## 3 CYCLES:

The 3 Cycles follow each other endlessly (no continuation of stopped time)

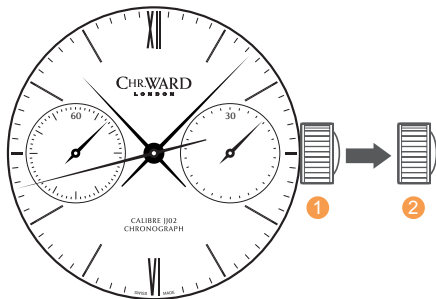
**Start** (clutch engages chrono, brake released, reset off)

**Stop** (clutch separates chrono, brake on, reset off)

**Reset** (clutch off, brake off, reset on)

## SETTING THE TIME

- Pull gently into position ②. This position is used for handsetting.
- Push the crown back into position ① until flush with the case.



# THE C900 SINGLE PUSHER CHRONOGRAPH

## FEATURES

Bespoke Uitas 6497 hand-wound mechanical chronograph by Johannes Jahnke with Jean Fillon

40 hour power reserve

Continuous seconds and 30 minute totaliser sub-dials operated through central crown function

Worldwide limited edition of 250 pieces

Personally assembled by master watchmaker, Johannes Jahnke

Handfinished, surgical grade, stainless steel case and crown

Museum-grade sapphire crystal with AR08 coating

Screw-down transparent case back with full diameter anti-reflective crystal

Serial number engraved on case and movement

Personalised authenticity certificate signed by Johannes Jahnke

## TECHNICAL DATA

Diameter: 43mm

Height: 15.9mm

Calibre: JJ02, hand-wound chronograph, highly modified from Uitas 6497

Vibrations: 18,000 vph

Case: 316L stainless steel

Water resistance: 5 ATM/50 metres

Strap: CITES approved, premium Louisiana alligator deployment strap

Dial: Optic white one-piece 3-9 bi-compax dial

# C900 STRAP

The following guidelines explain how easy it is to use and adjust your premium grade Louisiana alligator strap.



- Step 1 Locate the clasp
- Step 2 Press the quick-release
- Step 3 Pull open the clasp
- Step 4 Locate the opening
- Step 5 Thread strap through
- Step 6 Secure the strap
- Step 7 Close the clasp
- Step 8 Complete

# OUR WATCH CARE PROGRAMME

Your C900 Single Pusher Chronograph is constructed from the finest components and materials available including one of Switzerland's finest automatic movements. As with all watches of this quality, with the right care and attention, your new Christopher Ward watch has the potential to become an heirloom piece giving further joy to future generations. It's for this reason we have created our industry leading approach to after-sales care, starting with our famous 60/60 Guarantee which remains the most comprehensive guarantee in the world of watchmaking. Christopher Ward's 60/60 Guarantee is designed to deliver you complete peace of mind and the best support possible throughout the lifetime of your ownership. The guarantee has two key elements and sits alongside our Servicing and Repairs Programme:

## **60/60 GUARANTEE**

### **1. 60 DAY FREE RETURNS**

Our success depends on you being completely happy with your new Christopher Ward watch. You have up to 60 days to return your watch, absolutely free of charge, and receive a replacement or full refund by return – so long as it has not been worn and is returned in box-perfect condition.

### **2. 60 MONTH MOVEMENT GUARANTEE**

Your watch, at its heart, has a top quality precision engineered Swiss movement – so it's very unlikely to give you problems with the minimum amount of care and attention, including a regular service. We recommend you return your watch to us every 3/4 years for a service, so our expert technicians can keep your fine timepiece in the peak of condition.

## **SERVICING & REPAIRS...THE CHRISTOPHER WARD WAY...**

Our innovative approach to servicing and repairing your Christopher Ward watch means that having your watch serviced or repaired doesn't mean months of waiting followed by an exorbitant bill – which is pretty much the experience guaranteed by every other luxury watch brand. We have developed an easy, quick and affordable expert service and repairs programme that doesn't cost the earth and has your watch back where it belongs – on your wrist – in double-quick time.

Visit our website for more details about our 60/60 Guarantee and Service and Repair Programme.



And here's a few tips to help keep your watch working perfectly...

- Carefully rinse your watch in fresh water after immersion = exposure in salt water.
- Always ensure the crown is fully tightened before use in any water.
- Always adhere to the water resistance rating of your watch which you will find later in this handbook.
- Never fully wind your watch if it stops; 15-20 revolutions should suffice to have it restart.
- Wear your watch every day if possible as this will enable it to keep better time as well as preventing the lubricants in the movement from solidifying.



**1 ATM (10 METRES)**

Safe to wear your watch while washing your hands with tap water.



**3 ATM (30 METRES)**

Washing your car and/or general hosepipe usage.



**5 ATM (50 METRES)**

Water resistant to most household shower units.



**10 ATM (100 METRES)**

Safe to use while snorkelling in open water.



**30 ATM (300 METRES)**

Ideal for experienced divers and those practising scuba-diving.



**50 ATM (500 METRES)**

Professional divers, experiencing prolonged exposure underwater.



**100 ATM (1000 METRES)**

Professional deep sea diving.

## WATER RESISTANCE

Although your watch has been through vigorous static pressure testing, it is worth remembering that there are many variables that can affect the water resistance of your watch.

For instance, arm movements during swimming and the sudden impact of diving and watersports will drastically increase the pressure the watch is under. Wearing your watch in the bath, shower, or sauna can also have an effect as a rapid increase in temperature can cause seals to expand and in extreme cases, malfunction or create condensation.

For these reasons, the water resistance rating of your watch (as shown) **should only ever be considered a guideline** and we strongly recommend they are always adhered to.

## KEEPING IN TOUCH WITH CHRISTOPHER WARD...

From small beginnings just a few short years ago (our first workshop was actually a refurbished chicken shed!), Christopher Ward has won a worldwide following for his eponymous watch brand and can justifiably claim to manufacture the most affordable luxury watches in the world.

For many, the philosophy behind the brand, of trying to put luxury watches within the reach of everyone, is as attractive as the watches themselves, as is the very open approach of the business which means that Chris and the team spend a lot of time communicating personally with our customers - many of whom have become friends.

As the owner of a Christopher Ward watch, if ever you need to get hold of us we are at your service. We have listed some useful contact details on the back cover.

There is also always something new going on at our website at **[www.christopherward.co.uk](http://www.christopherward.co.uk)** and, if you haven't already discovered the independent forum dedicated to our brand at **[www.christopherwardforum.com](http://www.christopherwardforum.com)** we would recommend a visit. Informative and fun, it's a great place to hear the unexpurgated view of Christopher Ward of London!

# CHR. WARD

L O N D O N

## HEAD OFFICE

Christopher Ward (London) Limited,  
1 Park Street, Maidenhead,  
Berkshire SL6 1SL United Kingdom  
+44 (0)1628 763040

## CUSTOMER SERVICES

UNITED KINGDOM: +44 (0)1628 763040  
UNITED STATES OF AMERICA: 1.877.226.8224  
[customerservices@christopherward.co.uk](mailto:customerservices@christopherward.co.uk)  
[technical@christopherward.co.uk](mailto:technical@christopherward.co.uk)

## WEBSITE

[www.christopherward.co.uk](http://www.christopherward.co.uk)  
[www.christopherward.com](http://www.christopherward.com)  
[www.christopherward.eu](http://www.christopherward.eu)