



C60 Sapphire Edge
Owner's handbook



Time on your side

Your C60 Sapphire Edge watch has been designed in England and handbuilt in Switzerland by highly talented craftspeople. This ensures not only accurate and precise timekeeping, but also brings a real pride of ownership that only watches of the highest quality standards can hope to deliver.

You have made an investment, a good one, and the aim of this handbook is to help you make the most of that investment in what we hope will be a lifetime of ownership.

Mike France

CEO & co-founder



 Christopher
Ward



The features and technical details of your C60 Sapphire Edge

- Swiss made
- Self-winding mechanical movement
- Christopher Ward “Colimaçoné” finish on the rotor
- Brushed and polished Light-catcher™ stainless steel case
- Unidirectional sapphire bezel
- Central hacking seconds hand
- Screw-down crown stamped with twin-flag motif
- Anti-reflective sapphire crystal
- Sapphire crystal dial
- Exhibition case back with blue gradient sapphire crystal
- Unique engraved serial number
- Signature Trident counter-balance on seconds hand
- Sapphire bezel insert
- Luminous bezel markers
- Super-LumiNova® Grade X1 BL C1-filled hands and indexes

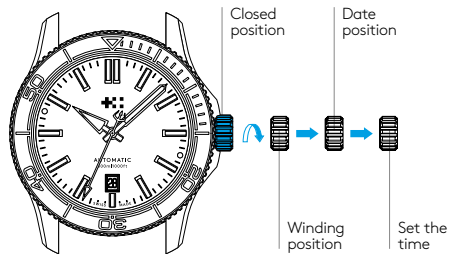
Calibre:	Sellita SW300-1
Jewels:	25
Frequency:	28,800 vph (4Hz)
Power reserve:	52-56 hours
Timing tolerance:	-20/+20 secs per day
Complication:	Central hacking seconds, date
Material:	Stainless steel
Diameter/Weight:	42 mm:70.87g
Height:	10.70mm
Water resistance:	30 ATM (300 meters)
Lume:	Super-LumiNova® Grade X1 BL C1
Strap width:	22 mm

Setting the time and date

Unscrew the crown* anti-clockwise from the case to position 2 for winding in power. Wind in a clockwise direction to re-power the watch.

To set the date pull gently into position 3 and turn in an clockwise direction.

Pull gently into position 4. This position is used for handsetting and stopping of the seconds hand. For precise time setting it is recommended to pass beyond the desired minute and to set the hand backwards.



*The screw-down crown should sit flush to the case (position 1) in order to maintain water resistance.

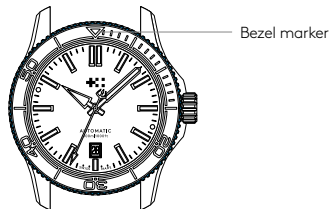
Date correction should not be carried out between 20.00 hr and 02.00 hr as the watch gearing will already be aligning itself to change the date.

Diving with your watch

If using the bezel for a dive and let's say the recognised maximum "no-stop time" is 55 minutes, then in this example (shown right) the time at the surface immediately before the dive is 10.08am. However the bezel marker is at the 12.00 hr position.

Move the bezel marker anti-clockwise so that it aligns with the 8 minute position.

You can now read that the 55 minute no decompression limit will occur at 3 minutes past the next hour.

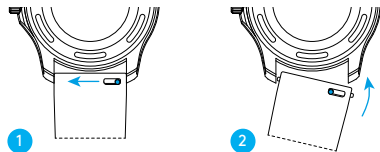


It is always useful and best practice to make a note on a dive slate before entering the water and to carry a set of dive tables should the dive plan change during the course of a dive. A safety stop for 3 to 5 minutes at 15ft is recommended at the end of all dives. A safety stop for 3 minutes at 15ft is required any time you come within 3 pressure groups of a no decompression limit, and for any dive to a depth of 100ft or deeper.

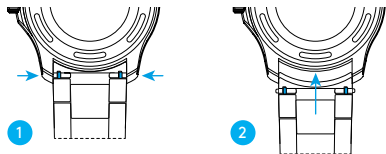
Changing your strap

- 1 Locate the quick-release pins on your strap or bracelet. Pinch the pins inwards to detach.
- 2 To reattach your strap or bracelet, pinch the pins inwards, and align the spring bars so they click securely into the lug holes on each side.

Detaching and reattaching a strap

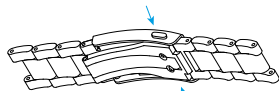


Detaching and reattaching a bracelet

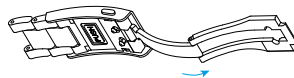


Using the micro adjustment on your bracelet

- 1 Press buttons to release.
- 2 Pull open the clasp.
- 3 There are three micro adjustment positions, which allows for a maximum extension of 6mm. To extend, push the button to unlock and simultaneously pull on the bracelet into the desired position.
- 4 To shorten, simply push the button and then slide the bracelet back into the clasp.



1



2



3



4

Servicing your watch

Our approach to service is about uncompromised quality and great value for money. The process, led by our expert technicians, won't cost the earth and will have the watch back on your wrist in reasonable time. We recommend you service your watch every three to four years to keep it in peak condition.



Your 60|60 Guarantee

Your Christopher Ward watch is covered by our industry-leading 60|60 Guarantee.

This means that you can return it 60 days after purchase and receive a full refund (as long as the watch is in perfect condition).

And if your watch develops a mechanical fault within five years (60 months), we'll repair it for free. Please use the warranty card to arrange this.

If you ever need to get hold of us we're at your service. And if you'd like to explore the CW world more, you can follow us on social media.



ChristopherWardLondon



@chriswardlondon