

# C65 Trident GMT

Owner's handbook

## Time on your side...

Your Christopher Ward watch has been designed and engineered by highly talented craftspeople to ensure not only accurate and precise timekeeping, but also to bring a real pride of ownership that only luxury items of the highest quality can ever hope to deliver.

You have made an investment, a good one, and the aim of this handbook is to help you make the most of that investment during what I hope will be a lifetime of ownership.

A handwritten signature in black ink, appearing to read 'Chris', written in a cursive, flowing style.

Christopher Ward

### Contents

C65 Trident GMT	2-3
Technical information	4-5
How to operate your C65 Trident GMT	6-14
Our watch care programme	15
Keeping in touch	16

## C65 Trident GMT

In the C65 Trident GMT, a watch that can allow its wearer to track the time in three separate time zones, the '60s dive watch aesthetic first unveiled in our C65 Trident Diver has gone global.

Initially introduced in the 1950s and '60s, the first GMT watches were created at the request of Pan Am pilots seeking the ability to track multiple time zones throughout their transatlantic flights. Watches like Rolex's GMT Master proved a particularly elegant solution to the newfound problem posed by long haul journeys; the C65 Trident GMT channels the same excitement and possibility of the Golden Age of air travel, a time when air hostesses were the height of glamour – and there was considerably more legroom!

One of the GMT's strengths lies in how it blends functionality and design to evoke its '60s theming with such charming finesse. For the blue and black dial options, a 24 hour brushed stainless steel bezel insert



has been engraved and then filled with lacquer. The alternative is a red and blue dual-toned anodised aluminium bezel insert – a design touch to enhance the matte black dial. The other stand-out addition is the C65's GMT hand, present in a bright hue that in turn complements its SuperLumiNova®-filled baton indexes.

Add the precision and robust nature of the Swiss-made ETA 2893-2 (Sellita SW330 for the red/blue bezel and blue dial options) inside – movements whose 42-hour power reserve will comfortably outlast even the longest of flights – and the combinative effect confirms the C65 Trident GMT as a rugged traveller's watch ready for its next globe-trotting adventure.



## Technical information

### Features

- Swiss made
- 21 (ETA 2893-2) or 25 (Sellita SW330) jewel self-winding elaboré-grade mechanical movement
- 42 hour power reserve
- Dual-time GMT function
- Date calendar
- Central hacking seconds
- Anti-shock system
- Twin flags debossed at 12 o'clock
- Brushed and polished marine-grade stainless steel case
- Push-in crown stamped with twin flag motif
- Unidirectional stainless steel 24hr bezel insert (blue and black dial versions)
- Anodised aluminium colour insert (red/blue bezel version)

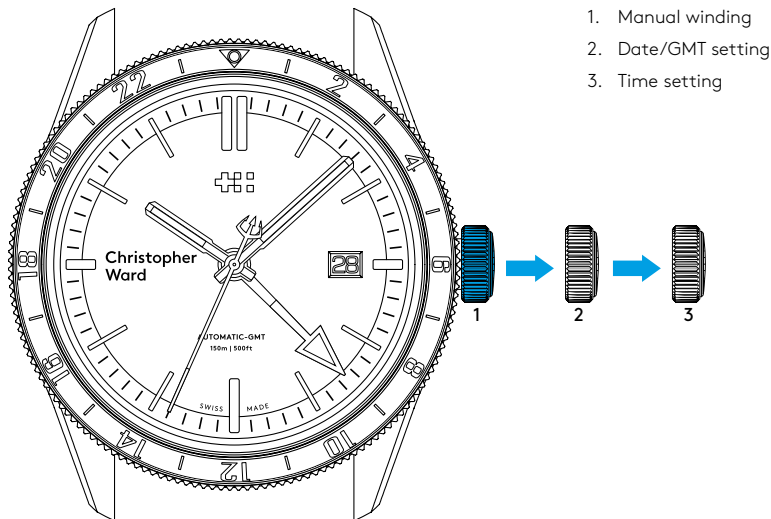
- "Glass box" sapphire crystal
- Matte finish dial
- SuperLumiNova® indexes and hands
- Signature Trident counter-balance on seconds hand
- High Definition "Trident" motif screw-down backplate
- Unique engraved serial number

### Technical

<b>Diameter:</b>	41mm
<b>Height:</b>	12.05mm
<b>Weight:</b>	71g
<b>Calibre:</b>	ETA 2893-2/Sellita SW330
<b>Case:</b>	316L stainless steel
<b>Water Resistance:</b>	15 ATM (150 metres)
<b>Vibrations:</b>	28,800 per hour (4 Hz)
<b>Timing tolerance:</b>	±20 seconds per day
<b>Lug to lug:</b>	47.1mm
<b>Strap:</b>	22mm



## Setting the time/date



The crown should sit flush to the case (position 1) in order to maintain water resistance.

- To re-power the watch after a period of non-use, simply wind the crown in a clockwise direction. Your C65 Trident GMT has a maximum power reserve of 42 hours when fully wound.
- Pull gently into position 2. For rapid date correction, turn in an anti-clockwise direction. To set the GMT hand, turn the crown clockwise and rotate the hand until you have reached the desired time indication. The GMT hand moves in one-hour increments.
- To set the time pull out the crown gently into position 3. This position is used for handsetting and stopping of the second hand. Turn the crown until you reach the correct time e.g. 10.08 hr. For precise time setting it is recommended you pass beyond the desired minute and to set the hand backwards.

**PLEASE NOTE:** Date correction should not be carried out between 20.00 hr and 02.00 hr as the watch gearing will already be aligning itself to change the date. The crown should always be pushed in after adjustment, and it is best to do so from position 3 to avoid advancing beyond the desired date.

## Using the GMT hand for travel

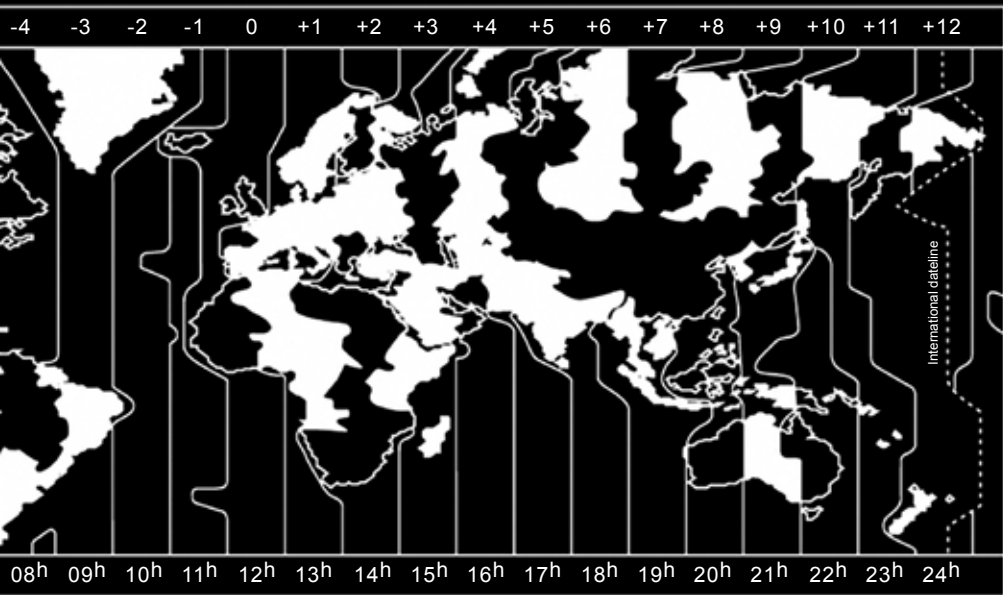
Set the time in your new destination by pulling the crown into position **3** and move the hour/minute hands until they indicate the desired time.

Push crown into position **2** and wind, clockwise, the GMT hand around the 24-hour scale on the bezel until you have the right time at home. E.g. If you're travelling from London at 12:10 to New York, you would turn the hour/minute hands to 7:10 (NY time is five hours behind London) and wind the GMT hand around to the 12:10 position.

Once set, it means that, for example, you can gauge the time to ring your friends and family without waking them in the middle of the night.

Note: The table opposite can be used to determine the appropriate time zone when setting the hour/minute hands.







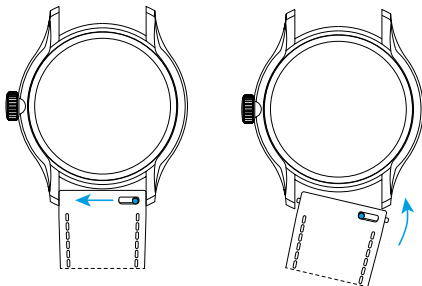


## Straps and bracelets

As you would expect, we place as much emphasis on the quality of our straps and bracelets as we do our watches. We only use the finest leathers for our straps. Similarly, we only use the finest metals in the construction of our bracelets, all of which are precision engineered for durability, efficiency and comfort.

The following guidelines explain how easy it is to use and adjust your Christopher Ward strap or bracelet.

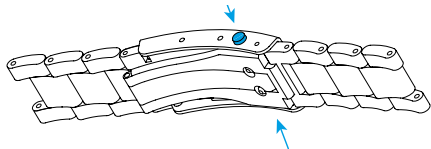
### Using the quick-release pins on your strap



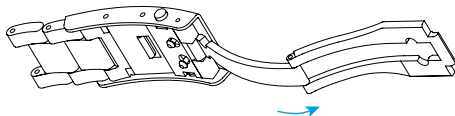
1. Locate the quick-release pin on your strap. Pull the pin to the side to detach your strap.
2. To reattach your strap, align the pins to the lug holes and click the strap into position. Repeat for the other side.

## Integrated bracelet with micro adjustment

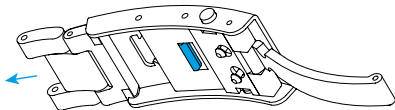
1. Press buttons to release.



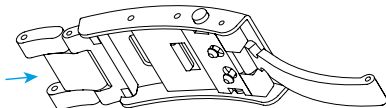
2. Pull open the clasp.



3. There are five micro adjustment positions, which allows for a maximum extension of 8.4mm. To extend, pull the lever to unlock and simultaneously pull on the bracelet into the desired position.



4. To shorten, simply push the bracelet back into the clasp.



## Water resistance

Although your watch has been through vigorous static pressure testing, it is worth remembering that there are many variables that can affect the water resistance of your watch.

For instance, arm movements during swimming and the sudden impact of diving and water sports will drastically increase the pressure the watch is under. Wearing your watch in the bath, shower, or sauna can also have an effect as a rapid increase in temperature can cause seals to expand and in extreme cases, malfunction or create condensation.

For these reasons, the water resistance rating of your watch (as shown) should only ever be considered a guideline and we strongly recommend they are always adhered to.



### **1 ATM (10 metres)**

Safe to wear your watch while washing your hands with tap water.



### **3 ATM (30 metres)**

Washing your car and/or general hose pipe usage.



### **5 ATM (50 metres)**

Water resistant to most household shower units.



### **15 ATM (150 metres)**

Safe to use while snorkelling in open water.



### **30 ATM (300 metres)**

Ideal for experienced divers and those practising scuba-diving.



### **60 ATM (600 metres)**

Professional divers, experiencing prolonged exposure underwater.



### **100 ATM (1000 metres)**

Professional deep sea diving.

## Our watch care programme

Your watch is constructed from the finest components and materials available including one of Switzerland's finest mechanical movements. As with all watches of this quality, with the right care and attention, your new Christopher Ward watch has the potential to become an heirloom piece giving further joy to future generations. It's for this reason we have created our industry leading approach to after-sales care, starting with our famous 60|60 Guarantee which remains the most comprehensive guarantee in the world of watchmaking.

Visit our website for more details about our 60|60 Guarantee and Service and Repair Programme.

### **60|60 Guarantee**

#### **1. 60 day free returns**

Our success depends on you being completely happy with your new Christopher Ward watch. You have up to 60 days to return your watch, absolutely free of charge, and receive a replacement or full refund by return – so long as it has not been worn and is returned in perfect condition.

#### **2. 60 month movement guarantee**

Your watch, at its heart, has a top quality precision engineered Swiss movement – so it's very unlikely to give you problems with the minimum amount of care and attention, including a regular service. We recommend you return your watch to us every 3/4 years for a service, so our expert technicians can keep your fine timepiece in peak condition.

### **Servicing and repairs, the Christopher Ward way...**

Our innovative approach to servicing and repairing your Christopher Ward watch means that having your watch serviced or repaired doesn't mean many months of waiting followed by an exorbitant bill – which is more or less the experience guaranteed by every other luxury watch brand. We have developed an easy, quick and affordable expert service and repairs programme that doesn't cost the earth and has your watch back where it belongs – on your wrist – in double-quick time.

## Keeping in touch with Christopher Ward

From small beginnings just a few short years ago (our first workshop was actually a refurbished chicken shed!), Christopher Ward has won a worldwide following for his eponymous watch brand and can justifiably claim to manufacture the most affordable luxury watches in the world.

For many, the philosophy behind the brand, of trying to put luxury watches within the reach of everyone, is as attractive as the watches themselves, as is the very open approach of the business which means that Chris and the team spend a lot of time communicating personally with our customers – many of whom have become friends.

As the owner of a Christopher Ward watch, if ever you need to get hold of us we are at your service. We have listed some useful contact details on the back cover.

There is also always something new going on at our website at **[www.christopherward.co.uk](http://www.christopherward.co.uk)** and, if you haven't already discovered the independent forum dedicated to our brand at **[www.christopherwardforum.com](http://www.christopherwardforum.com)** we would recommend a visit. Informative and fun, it's a great place to hear the unexpurgated view of Christopher Ward.

**Head Office**

1 Park Street, Maidenhead,  
Berkshire SL6 1SL  
United Kingdom

**Customer Services**

UK: +44 (0)1628 763040

USA: 1.877.226.8224

[customerservices@christopherward.co.uk](mailto:customerservices@christopherward.co.uk)

[technical@christopherward.co.uk](mailto:technical@christopherward.co.uk)

[christopherward.co.uk](http://christopherward.co.uk)