

C7 RAPIDE CHRONOGRAPH MK II

OWNER'S HANDBOOK

CHR. WARD
L O N D O N

TIME ON YOUR SIDE...

Your Christopher Ward watch has been designed and engineered by highly talented craftspeople to ensure not only accurate and precise timekeeping but also to bring a real pride of ownership that only luxury items of the highest quality can ever hope to deliver.

You have made an investment, a good one, and the aim of this handbook is to help you make the most of that investment during what I hope will be a lifetime of ownership.

A handwritten signature in black ink, reading "Chris", with a stylized flourish at the end.

Christopher Ward

CONTENTS

C7 RAPIDE CHRONOGRAPH MK II	2-3
TECHNICAL INFORMATION	4-5
OPERATING INSTRUCTIONS	6-21
THE CW360 WATCH CARE PROGRAMME	22-23
GENERAL INFORMATION	24

C7 RAPIDE CHRONOGRAPH MK II

Ad genus set vivere – to race is to live; perfectly captures the spirit of the many motorsport racing legends of the track to whom this exceptional chronograph pays homage.



If the MK I was a triumph of substance and style, then the Mark II is an exceptionally worthy successor. A new Ronda movement, new aluminium bezel and two new dials all serve to emphasise Christopher Ward's intuitive feel for how to evolve a classic design without losing the essence of the original. Like the racing drivers the C7 Mark II honours, this is a watch that represents the pinnacle of achievement and accuracy in a chosen field.

Far Left; C7 Rapide Chronograph Mark I

Left/Right; C7 Rapide Chronograph MK II



TECHNICAL INFORMATION

FEATURES

- Swiss made
- Quartz chronograph movement
- 1/10ths second split timing
- 316L stainless steel case
- 42mm diameter
- Tachymeter
- Special back plate engraving
- Unique engraved serial number
- 10 ATM water resistance
- Screw-in crown and back plate
- Anti-reflective sapphire crystal
- Super-Luminova™
- Stainless steel bracelet

TECHNICAL INFORMATION

Diameter:	42mm
Height:	10.7mm
Calibre:	Ronda 3540.D
Case:	316L stainless steel
Water Resistance:	10 ATM (100 metres)
Strap:	22mm black leather (or bracelet or rubber strap)



OPERATING INSTRUCTIONS

CHR. WARD
LONDON

28

C7 RAPIDE MKII

DISPLAY AND CONTROL BUTTONS

DISPLAY ELEMENTS

Minute Hand

Tenths counter

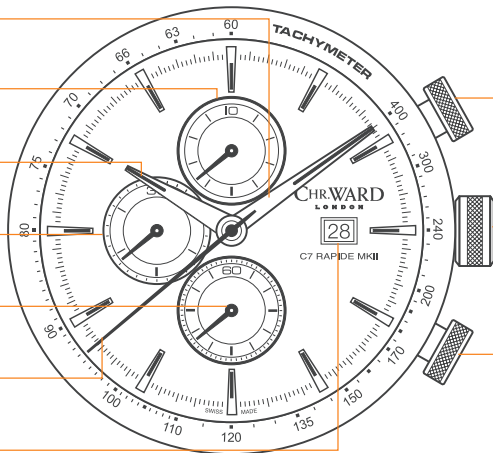
Hour hand

Minutes counter

Seconds hand

Centre stop-second

Date Window



CONTROL BUTTONS

Push-button A

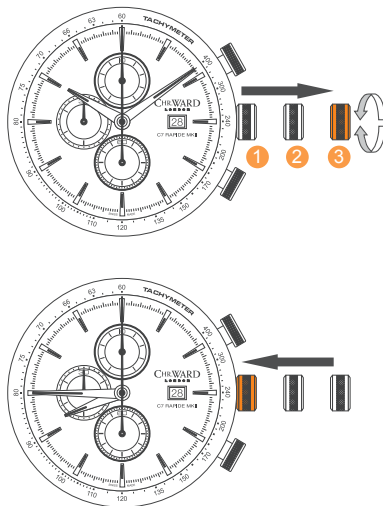
Crown

Push-button B

SETTING THE TIME

For a superior water resistance your crown is of the screw-in type. To get to position **1** turn the crown anti-clockwise until it releases itself.

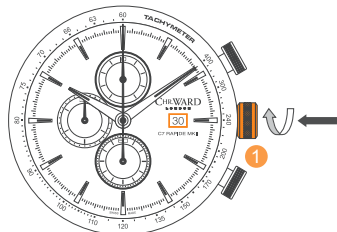
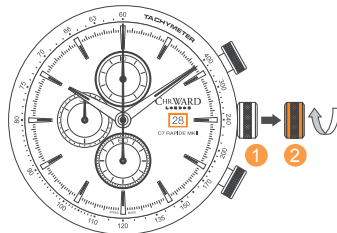
- Pull out the crown to position **3** (the watch stops).
- Turn the crown until you reach the correct time e.g. **08.45 hr.**
- Push the crown back into position **1** and screw the crown in a clockwise direction in order to maintain water resistance. The crown should sit flush to the case.



SETTING DATE (QUICK MODE)

- Pull out the crown to position **2** (the watch continues to run).
- Turn the crown anti-clockwise until the correct date appears.
- Push the crown back into position **1** until flush with the case and screw in.

PLEASE NOTE: The date can not be changed during the date changing phase between 20.00 hrs and 02.00 hrs as the watch gearing will already be aligning itself to change the date. The crown should always be screwed in after adjustment, and it is best to do so from position **3** to avoid advancing beyond the desired date.



CHRONOGRAPH FUNCTIONS:

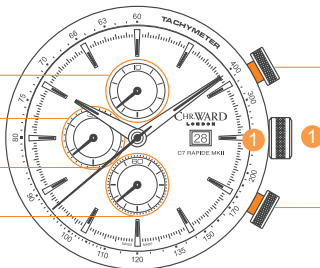
DISPLAY ELEMENTS

Tenths

Minutes

Centre stop-second

Seconds



CONTROL BUTTONS

Push-button A
(Start / Stop)

Push-button B
(Reset)

- The **minute counter** measures 30 minutes per rotation.
- The **centre stop-second** measures 60 seconds per rotation.
- The **1/10 second counter** measures 1 second per rotation.

PLEASE NOTE: Before using the chronograph functions, please ensure that:

- The crown is in position ① (screwed in).
- The 3 chronograph hands are at zero position.

Should this not be the case, the positions of the hands must be adjusted (see the chapter entitled 'Adjusting the chronograph hands to zero position').

BASIC FUNCTIONS

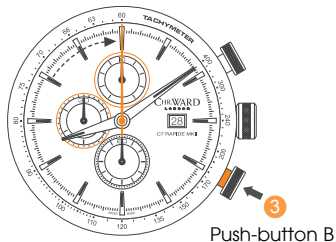
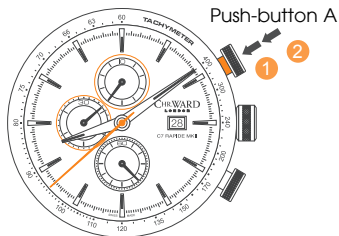
(START / STOP / RESET)

Example:

- 1 **Start:** Press push-button A.
- 2 **Stop:** to stop the timing, press push-button A once more and read the 3 chronograph counters: 4 min / 38 sec / 7/10 sec.
- 3 **Zero positioning:**
Press push-button B. (The 3 chronograph hands will be reset to their zero positions).

Example of use:

Timing a runner over 100m.



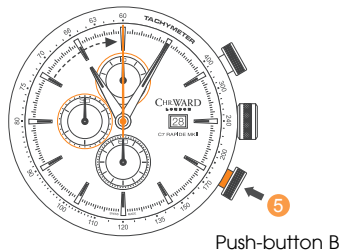
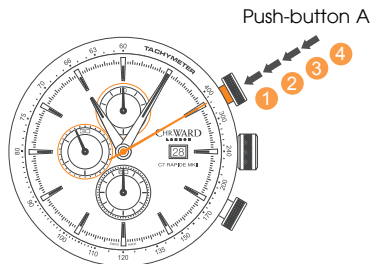
ACCUMULATED TIMING

Example:

- ➊ **Start:** (start timing).
- ➋ **Stop:** (e.g. 15 min 5 sec following ➊).
- ➌ **Restart:** (timing is resumed).
- ➍ **Stop:** (e.g. 13 min 5 sec following ➌).
= 28 min 10 sec (accumulated measured time is shown)
- ➎ **Reset:** The 3 chronograph hands are returned to their zero positions.
- ➏ **Repeat:** as necessary.

Example of use:

Overall time to complete a journey less the coffee breaks.



INTERMEDIATE OR INTERVAL TIMING

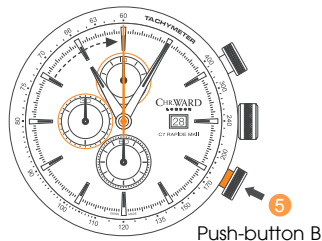
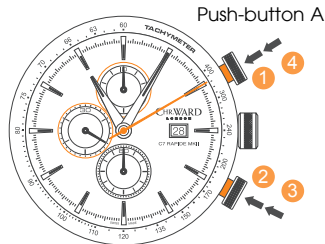
Example:

- ➊ **Start:** (start timing).
- ➋ **Display interval:**
e.g. 10 minutes 10 seconds (timing continues in the background).
- * ➌ **Making up the measured time:**
(the 3 chronograph hands are quickly advanced to the ongoing measured time).
- ➍ **Stop:** (final time is displayed).
- ➎ **Reset:** The 3 chronograph hands are returned to their zero positions.

Please note:

- * Following ➌, further intervals or intermediates can be displayed by pressing **push-button B**.

Example of use: 4 x 100m relay.

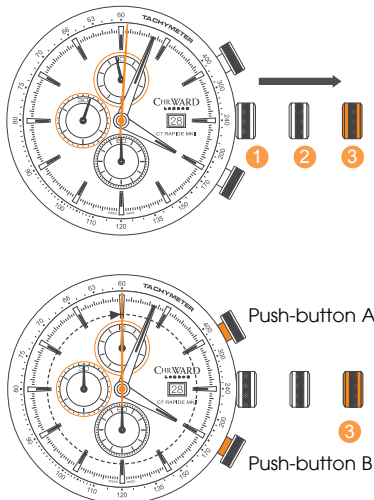


ADJUSTING CHRONOGRAPH HANDS TO ZERO POSITION

Example:

One or several chronograph hands are not in their correct zero positions and have to be adjusted (e.g. following a battery change).

- Pull out the crown to position **3** (all three chronograph hands are in their correct or incorrect zero position).
- Keep push-buttons **A** and **B** depressed **simultaneously** for at least 2 seconds (the centre stop-second rotates by 360° → corrective mode is activated).



ADJUSTING CHRONOGRAPH HANDS TO ZERO POSITION

Adjusting the centre stop second

Single step	A	1 x short
Continuous	A	long

When correct press button B to set.

Corrective mode for the 1/10 second counter is now activated.

Adjusting the 1/10 second counter hand (position 12h)

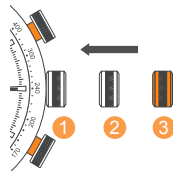
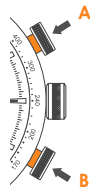
Single step	A	1 x short
Continuous	A	long

When correct press button B to set. Corrective mode for the minute counter is now activated.

Adjusting the minute counter (position 9h)

Single step	A	1 x short
Continuous	A	long

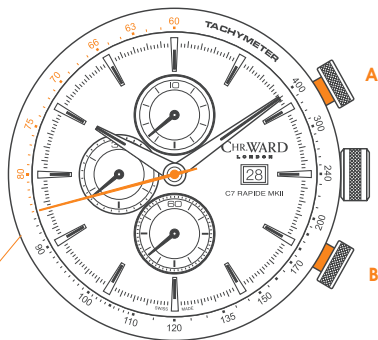
- Return the crown to **position 1** (flush with the case).
- Termination of the chronograph hands adjustment can be carried out at any time.



USING THE TACHYMETRIC SCALE TO CALCULATE SPEED

Example: calculating the speed of a race car over the course of a mile.

Record the time the race car takes to cover a known distance of 1 mile. Read off the speed on the tachymetric scale indicated by the central seconds hand. In this case, the race car is travelling at 85mph.



Tachymetric Scale



WATER RESISTANCE

Although your watch has been through vigorous static pressure testing, it is worth remembering that there are many variables that can affect the water resistance of your watch.

For instance, arm movements during swimming and the sudden impact of diving and water sports will drastically increase the pressure the watch is under. Wearing your watch in the bath, shower, or sauna can also have an effect as a rapid increase in temperature can cause seals to expand and in extreme cases, malfunction or create condensation.

For these reasons, the water resistance rating of your watch (as shown) **should only ever be considered a guideline** and we strongly recommend they are always adhered to.



1 ATM (10 METRES)

Safe to wear your watch while washing your hands with tap water.



3 ATM (30 METRES)

Washing your car and/or general hose pipe usage.



5 ATM (50 METRES)

Water resistant to most household shower units.



10 ATM (100 METRES)

Safe to use while snorkelling in open water.



30 ATM (300 METRES)

Ideal for experienced divers and those practising scuba-diving.



50 ATM (500 METRES)

Professional divers, experiencing prolonged exposure underwater.



100 ATM (1000 METRES)

Professional deep sea diving.

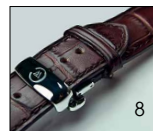


STRAPS & BRACELETS

As you would expect, we place as much emphasis on the quality of our straps and bracelets as we do our watches. We only use the finest leathers for our straps and our premium alligator straps are all ethically sourced from CITES approved farms in Louisiana.

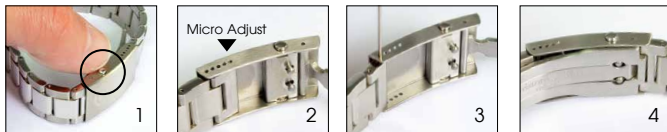
Similarly, we only use the finest metals in the construction of our bracelets, all of which are precision engineered for durability, efficiency and comfort. The following guidelines explain how easy it is to use and adjust your Christopher Ward strap or bracelet.

LEATHER STRAP WITH EASY RELEASE BUTTERFLY CLASP



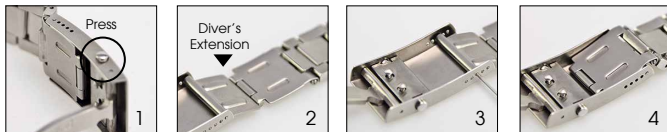
1. Locate the clasp
2. Press the quick-release
3. Pull open the clasp
4. Locate the opening
5. Thread strap through
6. Secure the strap
7. Close the clasp
8. Complete

BRACELET WITH MICRO-ADJUSTMENT



1. Press to release
2. Expand adjustment
3. Adjust pin position
4. Close the clasp

DIVER'S EXTENSION (WHERE APPLICABLE)



1. Press to release
2. Expand adjustment
3. Adjust pin position
4. Close the clasp

QUICK-RELEASE PINS (WHERE APPLICABLE)



1. Locate the release
2. Drag button back
3. Detach strap
4. Align holes to click a new strap in position

THE CW360 WATCH CARE PROGRAMME

Your watch is constructed from the finest components and materials available including one of Switzerland's finest quartz movements. As with all watches of this quality, with the right care and attention, your new Christopher Ward watch has the potential to become an heirloom piece giving further joy to future generations. It's for this reason we have created our industry leading approach to after-sales care which we term the CW360 Watch care Programme.

Christopher Ward's CW360 Watch Care Programme is designed to deliver you complete peace of mind and the best support possible throughout the lifetime of your ownership. The programme has three key elements:

1 60 DAY FREE RETURNS

Our success depends on you being completely happy with your new Christopher Ward watch. If for any reason you aren't, you have up to 60 Days to return your watch, absolutely free of charge, and receive a replacement or full refund by return – and without any quibbles from us!

2 FREE 5 YEAR MOVEMENT GUARANTEE

Your watch, at its heart, has a top quality precision engineered Swiss movement – so it's very unlikely to give you problems with the minimum amount of care and attention, including a regular service. We recommend you return your watch to us every 3/4 years for a service, so our expert technicians can keep your fine timepiece in the peak of condition. (We recommend that whenever your quartz battery needs changing you consider having the watch serviced at the same time to keep it in perfect working order.)

3 SERVICING & REPAIRS...THE CHRISTOPHER WARD WAY...

Our innovative approach to servicing and repairing your Christopher Ward watch means that having your watch serviced or repaired doesn't mean months of waiting followed by an exorbitant bill – which is pretty much the experience guaranteed by every other luxury watch brand. We have developed an easy, quick and affordable expert service and repairs programme that doesn't cost the earth and has your watch back where it belongs – on your wrist – in double-quick time.

Visit our website for more details about the CW360 Watch Care Programme

KEEPING IN TOUCH WITH CHRISTOPHER WARD

From small beginnings just a few short years ago (our first workshop was actually a refurbished chicken shed!), Christopher Ward has won a worldwide following for his eponymous watch brand and can justifiably claim to manufacture the most affordable luxury watches in the world.

For many, the philosophy behind the brand, of trying to put luxury watches within the reach of everyone, is as attractive as the watches themselves, as is the very open approach of the business which means that Chris and the team spend a lot of time communicating personally with our customers – many of whom have become friends.

As the owner of a Christopher Ward watch, if ever you need to get hold of us we are at

your service. We have listed some useful contact details on the back cover.

There is also always something new going on at our website at **www.christopherward.co.uk** and, if you haven't already discovered the independent forum dedicated to our brand at **www.christopherwardforum.com** we would recommend a visit. Informative and fun, it's a great place to hear the unexpurgated view of Christopher Ward of London!

CHR. WARD

L O N D O N

CERTIFICATE OF AUTHENTICITY

MODEL

SERIAL NUMBER

DATE

CHECKED

christopherward.co.uk

Christopher Ward (London) Limited, 1 Park Street, Maidenhead
Berkshire SL6 1SL United Kingdom

CHR. WARD

L O N D O N

HEAD OFFICE

Christopher Ward (London) Limited,
1 Park Street, Maidenhead,
Berkshire SL6 1SL United Kingdom
+44 (0)1628 763040

CUSTOMER SERVICES

UNITED KINGDOM: +44 (0)844 875 1515
UNITED STATES OF AMERICA: 1.877.226.8224
customerservices@christopherward.co.uk
technical@christopherward.co.uk

WEBSITE

www.christopherward.co.uk
www.christopherward-usa.com