

Alex

by Christopher Ward

Time on your side...

Your Christopher Ward watch has been designed and engineered by highly talented craftspeople to ensure not only accurate and precise timekeeping but also to bring a real pride of ownership that only luxury items of the highest quality can ever hope to deliver.

You have made an investment, a good one, and the aim of this handbook is to help you make the most of that investment during what I hope will be a lifetime of ownership.

A handwritten signature in black ink, appearing to read 'Chris', with a stylized, cursive script.

Christopher Ward

Caring for your Christopher Ward quartz watch

Your Alex quartz watch is constructed from the finest components and materials available including one of Switzerland's finest quartz movements.

As with all watches of this quality, with just a little care, it has the potential to become an heirloom piece giving further joy to future generations.

Here are a few hints to help keep your watch working perfectly over the years:

- Although the battery in your watch may last longer, we recommend you have it changed every 2/3 years by a reputable watch repairer.
- At the same time as having the battery changed it makes sense to have the watch repaired cleaned and lubricated. Our CW360° Watch Care Programme has been designed to make this easy, fast and affordable. You will find full details on our website.
- Adhere to the water resistance ratings towards the end of the handbook to prevent water getting to the movement which could result in a very costly repair or the need for a replacement movement.
- Your watch is shock resistant to minor impacts but dropping from height onto a hard surface may damage the movement.

Should you need a replacement part - don't worry, we keep stocks of spare parts for years, even for discontinued models. It's all part of the Christopher Ward service.

Finally, don't forget our CW360° Watch Care Programme allows you to return your watch absolutely free, for any reason, and with no quibbles, for up to 60 days after purchase and we also guarantee your movement for up to 60 months, so long as it is regularly serviced.

After all, why shouldn't you enjoy peace of mind as much as you enjoy your watch?

Please note. Your chronograph watch allows you to time any important events in your life. You will gain most satisfaction from your watch by carefully reading how to set and use the chronograph function we describe on the following pages.

Alex

Features

Swiss Made

5 jewel Swiss quartz movement

Sapphire crystal with anti-reflective coating

Water resistant to 3 atm (30 metres)

Unique serial number

Screw back case

Technical Data

Diameter: 16mm

Height: 6.9mm

Weight: 24g - 110g

Case: 316L Stainless steel

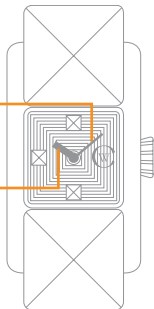
Calibre: Ronda 1042

Display and Control Functions

Display elements

Minute Hand

Hour hand



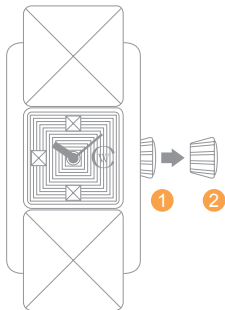
Control buttons

Crown

Setting the Time

From position ①, pull the crown to position ②, and adjust the time setting in either a clockwise or anti-clockwise direction

Return the crown to position ①, after adjustment to retain water resistance





Alex Sport

Features

Swiss Made

10 jewel Swiss quartz movement

Sapphire crystal with anti-reflective coating

Water resistant to 5 atm (50 metres)

Unique serial number

Screw back case

Technical Data

Diameter: 37.6mm

Height: 7.6mm

Weight: 151g

Case: 316L Stainless steel

Calibre: Ronda 5020.B

Display and Control Functions

Display elements

Centre stop-second

Minute Hand

Minutes (Outer dial)

Hours (Inner dial)

Hour hand

Seconds

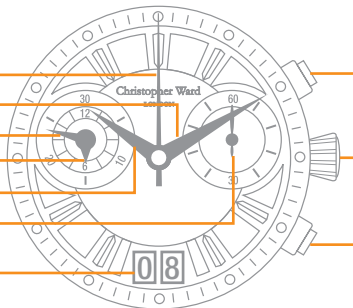
Date Window

Control buttons

Push-button A

Crown

Push-button B

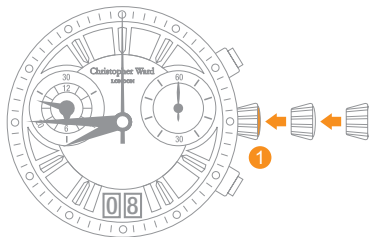
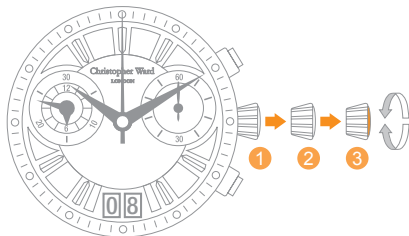


Setting the time

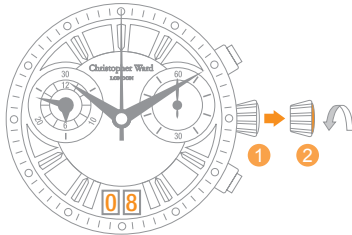
Pull out the crown to position ③ (the watch stops)

Turn the crown until you reach the correct time
eg. 08.45hr

Push the crown back into position ①



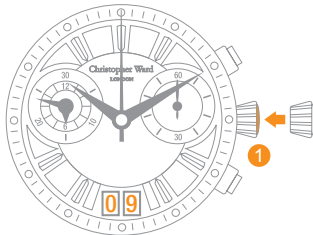
Setting the date (quick mode)



Pull out the crown to position 2 (the watch continues to run)

Turn the crown clockwise until the correct date appears

Push the crown back into position 1 until flush with the case



Please note: The date can not be changed during the date changing phase between 21.00 hr and 02.00 hr as the watch gearing will already be aligning itself to change the date. The crown should always be pushed in after adjustment, and it is best to do so from position 3 to avoid advancing beyond the desired date.

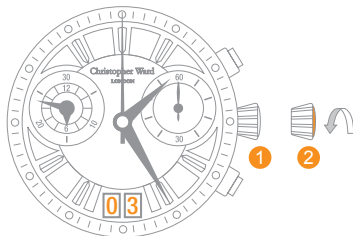
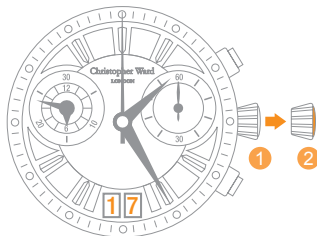
Setting the date (quick mode)

Example:

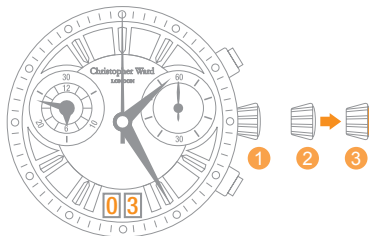
Date / time on the watch: **17th** / 01.25 hr

Present date / time: **4th** / 20.30 hr

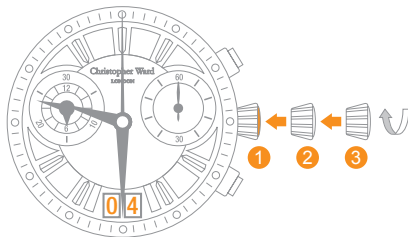
Pull out the crown to position **2** (the watch continues to run)



Turn the crown clockwise until yesterday's date appears ie. **3rd**



Pull out the crown to position **3** (the watch stops)



Turn the crown clockwise until the correct date
ie. **4th** appears (after passing through midnight)

Continue to turn the crown until the correct time
21.30hr appears

Push the crown back into position **1** until
flush with the case



Chronograph (basic function)

(Start / Stop / Reset)

Example:

Start: Press push-button A

Stop: to stop the timing, press push-button A once more and read the 3 chronograph counters:

4 min / 38 sec

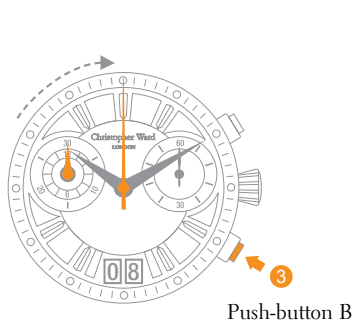
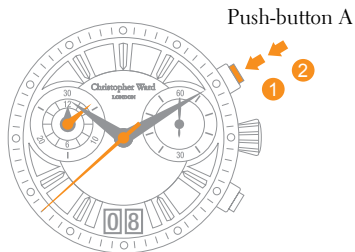
Zero positioning:

Press push-button B

(The 3 chronograph hands will be reset to their zero positions). The secondhand continues to run.

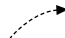
Example of use:

Timing a runner over 100m.



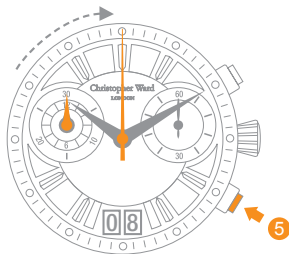
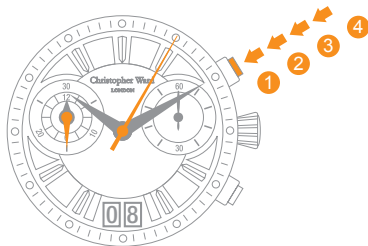
Chronograph (accumulated timing)

Example:

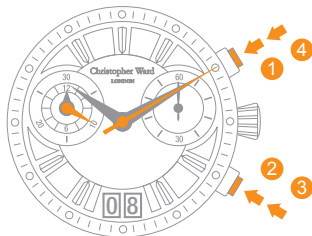
- ➊ **Start:** (start timing).
- ➋ **Stop:** (e.g. 15 min 5 sec following).
- ➌ **Restart:** (timing is resumed).
- ➍ **Stop:** (e.g. 13 min 5 sec following)
= 28 min 10 sec
(the accumulated measured time is shown)
- ➎ **Reset:** 
The 3 chronograph hands are returned to their zero positions.
- ➏ **Repeat:** as necessary.

Example of use:

Overall time to complete a journey less the coffee breaks.



Chronograph (intermediate or interval timing)



Example:

1 Start: (start timing).



2 Display interval:

e.g. 10 minutes 10 seconds (timing continues in the background).



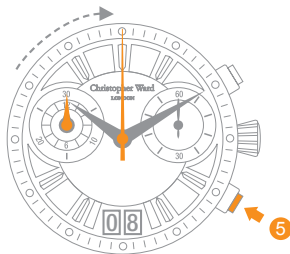
3 Making up the measured time:

(the 3 chronograph hands are quickly advanced to the ongoing measured time).

4* Stop: (final time is displayed).

5 Reset:

The 3 chronograph hands are returned to their zero positions.



Please note:

* Following **3**, further intervals or intermediates can be displayed by pressing push-button **B**.

Example of use: 4 x 100m relay.

Re-setting Chronograph hands

Example: One or several chronograph hands need to be adjusted (e.g. following a battery change)

- Pull out the crown to position **3** (all three hands are in their correct or incorrect zero position)
- Keep both **A** and **B** depressed simultaneously for at least 2 seconds (the centre stop-second rotates by 360° corrective mode is activated)

Adjusting the centre stop second

Single step A 1 x short

Continuous A long

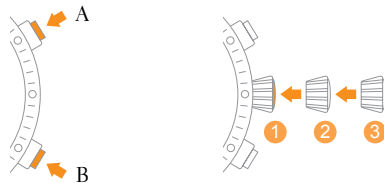
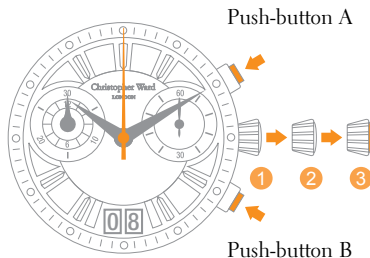
When correct press button B to set. Corrective mode for the minute/hour counters is now activated

Adjusting the minute/hour counter hand positions

Single step A 1 x short

Continuous A long

When correct return crown to position **1**



Water Resistance

Please note. these are only guidelines but we strongly urge you to adhere to them to retain the integrity of your watch. If you have any queries regarding this please contact us direct.

NB. To safeguard watch movement please ensure the crown is, at all times, screwed in correctly.



1 ATM
(10 Metres)

Safe to wear your watch while washing your hands with tap water



3 ATM
(30 Metres)

Washing your car and or general hosepipe usage



5 ATM
(50 Metres)

Water resistant to most household shower units



10 ATM
(100 Metres)

Safe to use while snorkelling in open water, it is not advisable to dive with your watch



30 ATM
(300 Metres)

Ideal for experienced divers and, in general, anybody practising scuba-diving



50 ATM
(500 Metres)

Professional divers, experienced prolonged exposure underwater

Keeping in touch with Christopher Ward

From small beginnings just a few short years ago (our first workshop was actually a refurbished chicken shed!), Christopher Ward has won a worldwide following for his eponymous watch brand and can justifiably claim to manufacture the most affordable luxury watches in the world.

For many, the philosophy behind the brand, trying to put luxury watches within the reach of everyone, is as attractive as the watches themselves as is the very open approach of the business which means that Chris and the team spend a lot of time communicating personally with customers - many of whom have become friends.

As the owner of a Christopher Ward watch, if ever you need to get hold of us we are at your service. We have listed some useful contact details on the back cover.

There is also always something new going on at our website at www.christopherward.co.uk and, if you haven't already discovered the independent forum dedicated to our brand at www.christopherwardforum.com we would recommend a visit. Informative and fun, it's a great place to hear the unexpurgated view of Christopher Ward of London!

CHR.WARD

christopherward.co.uk

Head Office

Christopher Ward (London) Limited, 1 Park Street, Maidenhead, Berkshire SL6 1SL United Kingdom

Telephone

+44 (0)1628 763040 (Head Office)

Customer Services

0844 875 1515 (UK) 1.877.226.8224 (USA)

Website

www.christopherward.co.uk (United Kingdom)
www.christopherward-usa.com (United States of America)
www.christopherward.eu (Europe)

General

customerservices@christopherward.co.uk

Technical

technical@christopherward.co.uk