

VICTORIA

OWNER'S HANDBOOK

CHR. WARD
L O N D O N

TIME ON YOUR SIDE...

Your Christopher Ward watch has been designed and engineered by highly talented craftspeople to ensure not only accurate and precise timekeeping but also to bring a real pride of ownership that only luxury items of the highest quality can ever hope to deliver.

You have made an investment, a good one, and the aim of this handbook is to help you make the most of that investment during what I hope will be a lifetime of ownership.

A handwritten signature in black ink, appearing to read 'Chris', with a stylized, flowing script.

Christopher Ward

CONTENTS

VICTORIA	2-3
TECHNICAL INFORMATION	4-5
OPERATING INSTRUCTIONS	6-13
THE CW360 WATCH CARE PROGRAMME	14-15
GENERAL INFORMATION	16

VICTORIA

Victoria is a classic design with a contemporary, urban aesthetic, which has the versatility to be worn for any occasion, day into evening.

Christopher Ward's renowned meticulous attention to detail is evident from the "Big Ben" inspired craquelure dials to the finesse of the roman numeral indexes and exciting electric blue hands.

When a refined elegance is required, Victoria will not let you down.





TECHNICAL INFORMATION

FEATURES

- Swiss made
- 6 jewel Swiss quartz movement
- Sapphire crystal with anti-reflective coating
- Water resistant to 3 ATM (30 metres)
- Unique serial number
- Screw-in back plate

TECHNICAL INFORMATION

Diameter:	34mm
Height:	7mm
Width:	22mm (Tonneau)
Weight:	38g-96g, 32g-90g (Tonneau)
Calibre:	Ronda 1069, Ronda 1064 (Tonneau)
Case:	316L stainless steel



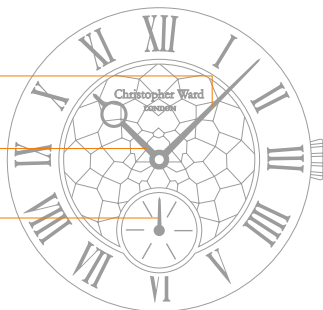
DISPLAY AND CONTROL BUTTONS

DISPLAY ELEMENTS

Minute hand

Hour hand

Second hand



CONTROL BUTTONS

Crown

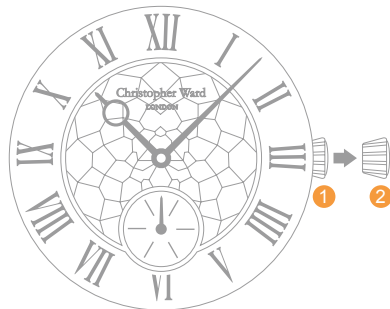


SETTING THE TIME

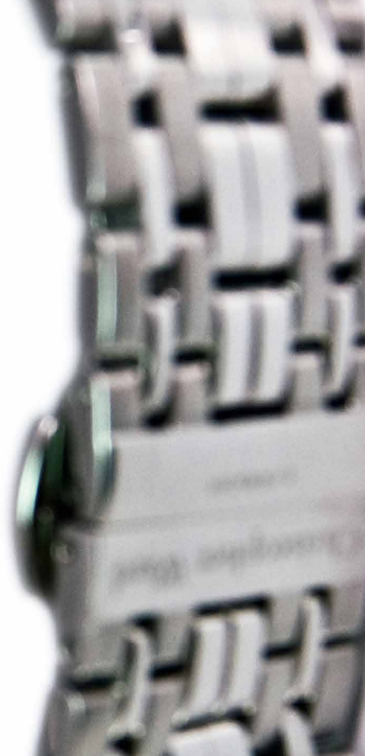
From position ①, pull the crown to position ②, and adjust the time setting in either a clockwise or anti-clockwise direction.

Pulling the crown out to position ②, stops the second hand.

Return the crown to position ①, after adjustment to retain water resistance.







WATER RESISTANCE

Although your watch has been through vigorous static pressure testing, it is worth remembering that there are many variables that can affect the water resistance of your watch.

For instance, arm movements during swimming and the sudden impact of diving and water sports will drastically increase the pressure the watch is under. Wearing your watch in the bath, shower, or sauna can also have an effect as a rapid increase in temperature can cause seals to expand and in extreme cases, malfunction or create condensation.

For these reasons, the water resistance rating of your watch (as shown) **should only ever be considered a guideline** and we strongly recommend they are always adhered to.



1 ATM (10 METRES)

Safe to wear your watch while washing your hands with tap water.



3 ATM (30 METRES)

Washing your car and/or general hose pipe usage.



5 ATM (50 METRES)

Water resistant to most household shower units.



10 ATM (100 METRES)

Safe to use while snorkelling in open water.



30 ATM (300 METRES)

Ideal for experienced divers and those practising scuba-diving.



50 ATM (500 METRES)

Professional divers, experiencing prolonged exposure underwater.



100 ATM (1000 METRES)

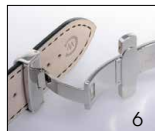
Professional deep sea diving.

STRAPS & BRACELETS

As you would expect, we place as much emphasis on the quality of our straps and bracelets as we do our watches. We only use the finest leathers for our straps and our premium alligator straps are all ethically sourced from CITES approved farms in Louisiana.

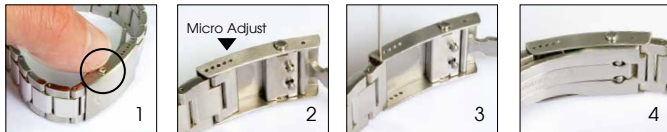
Similarly, we only use the finest metals in the construction of our bracelets, all of which are precision engineered for durability, efficiency and comfort. The following guidelines explain how easy it is to use and adjust your Christopher Ward strap or bracelet.

LEATHER STRAP WITH EASY RELEASE BUTTERFLY CLASP



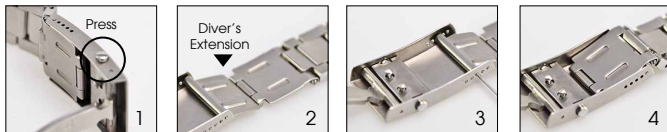
1. Locate the clasp
2. Press the quick-release
3. Pull open the clasp
4. Locate the opening
5. Thread strap through
6. Secure the strap
7. Close the clasp
8. Complete

BRACELET WITH MICRO-ADJUSTMENT



1. Press to release
2. Expand adjustment
3. Adjust pin position
4. Close the clasp

DIVER'S EXTENSION (WHERE APPLICABLE)



1. Press to release
2. Expand adjustment
3. Adjust pin position
4. Close the clasp

QUICK-RELEASE PINS (WHERE APPLICABLE)



1. Locate the release
2. Drag button back
3. Detach strap
4. Align holes to click a new strap in position

THE CW360 WATCH CARE PROGRAMME

Your watch is constructed from the finest components and materials available including one of Switzerland's finest quartz movements. As with all watches of this quality, with the right care and attention, your new Christopher Ward watch has the potential to become an heirloom piece giving further joy to future generations. It's for this reason we have created our industry leading approach to after-sales care which we term the CW360 Watch care Programme.

Christopher Ward's CW360 Watch Care Programme is designed to deliver you complete peace of mind and the best support possible throughout the lifetime of your ownership. The programme has three key elements:

1 60 DAY FREE RETURNS

Our success depends on you being completely happy with your new Christopher Ward watch. If for any reason you aren't, you have up to 60 Days to return your watch, absolutely free of charge, and receive a replacement or full refund by return – and without any quibbles from us!

2 FREE 5 YEAR MOVEMENT GUARANTEE

Your watch, at its heart, has a top quality precision engineered Swiss movement – so it's very unlikely to give you problems with the minimum amount of care and attention, including a regular service. We recommend you return your watch to us every 3/4 years for a service, so our expert technicians can keep your fine timepiece in the peak of condition. (We recommend that whenever your quartz battery needs changing you consider having the watch serviced at the same time to keep it in perfect working order.)

3 SERVICING & REPAIRS...THE CHRISTOPHER WARD WAY...

Our innovative approach to servicing and repairing your Christopher Ward watch means that having your watch serviced or repaired doesn't mean months of waiting followed by an exorbitant bill – which is pretty much the experience guaranteed by every other luxury watch brand. We have developed an easy, quick and affordable expert service and repairs programme that doesn't cost the earth and has your watch back where it belongs – on your wrist – in double-quick time.

Visit our website for more details about the CW360 Watch Care Programme

KEEPING IN TOUCH WITH CHRISTOPHER WARD

From small beginnings just a few short years ago (our first workshop was actually a refurbished chicken shed!), Christopher Ward has won a worldwide following for his eponymous watch brand and can justifiably claim to manufacture the most affordable luxury watches in the world.

For many, the philosophy behind the brand, of trying to put luxury watches within the reach of everyone, is as attractive as the watches themselves, as is the very open approach of the business which means that Chris and the team spend a lot of time communicating personally with our customers – many of whom have become friends.

As the owner of a Christopher Ward watch, if ever you need to get hold of us we are at your service. We have listed some useful contact details on the back cover.

There is also always something new going on at our website at **www.christopherward.co.uk** and, if you haven't already discovered the independent forum dedicated to our brand at **www.christopherwardforum.com** we would recommend a visit. Informative and fun, it's a great place to hear the unexpurgated view of Christopher Ward of London!

CHR. WARD

L O N D O N

CERTIFICATE OF AUTHENTICITY

MODEL

SERIAL NUMBER

DATE

CHECKED

christopherward.co.uk

Christopher Ward (London) Limited, 1 Park Street, Maidenhead
Berkshire SL6 1SL United Kingdom

CHR. WARD

L O N D O N

HEAD OFFICE

Christopher Ward (London) Limited,
1 Park Street, Maidenhead,
Berkshire SL6 1SL United Kingdom
+44 (0)1628 763040

CUSTOMER SERVICES

UNITED KINGDOM: +44 (0)844 875 1515
UNITED STATES OF AMERICA: 1.877.226.8224
customerservices@christopherward.co.uk
technical@christopherward.co.uk

WEBSITE

www.christopherward.co.uk
www.christopherward-usa.com