

C9 MOONPHASE

OWNER'S HANDBOOK

CHR. WARD
L O N D O N

TIME ON YOUR SIDE...

Your Christopher Ward watch has been designed and engineered by highly talented craftspeople to ensure not only accurate and precise timekeeping but also to bring a real pride of ownership that only luxury items of the highest quality can ever hope to deliver.

You have made an investment, a good one, and the aim of this handbook is to help you make the most of that investment during what I hope will be a lifetime of ownership.

A handwritten signature in black ink that reads "Chris". The script is fluid and cursive, with a large initial "C" and a small dot above the "i".

CONTENTS

C9 MOONPHASE	2-3
TECHNICAL INFORMATION	4-5
HOW TO OPERATE YOUR C9 MOONPHASE	6-14
OUR WATCH CARE PROGRAMME	15
KEEPING IN TOUCH	16

C9 MOONPHASE

Humans have looked to the moon as a device for telling the time for some 34,000 years. Today, what we know as a year consists of 12 calendar months, with eight lunar cycles (or “phases of the moon”) of 29.5 days – 29.5306 days exactly, for the pernickety among you – the time elapsed from one full moon to the next.

Breguet introduced the first wrist watch with a moon phase complication, the Perpetual Calendar No. 4244, in 1929 and it wasn't long before the big names in haute horlogerie such as Patek Philippe and Audemars Piguet followed with their own interpretations. And now, we are proud to introduce the first ever Christopher Ward moonphase watch, created by our own master watchmaker, Johannes Jahnke.

With his Calibre JJ04, Johannes modified the base ETA 2836-2 by creating two gear systems incorporating four wheels to drive the moon disc, and a further two wheels for the setting mechanism. The result is a smooth and continuous movement of the moon disc, in synch with the minutes and hours – the norm for moonphase watches is that the disc jumps once a day leaving the moon inaccurate for several hours each day. Once set, the representation of the moon's phase at any particular moment is unerringly precise. Additionally, the new gearing means that the moon disc is also accurate to within one day every 128 years of the base movement's accuracy.

If the C9 Moonphase is an astronomically precise watch, it is also a very beautiful one. Within the perfectly sized and hand-finished 40mm case and beneath a domed sapphire crystal is perhaps our finest dial to date, displaying through a wide curved aperture a generously-cut moon disc, allowing the

increments of the moon's stately and accurate passage through the skies to be admired in detail. Onto the large moon disc, the moon's surface is 3D stamped and given a semi-matt galvanic finish, revealing its texture to full effect. The bespoke guilloché pattern on the lower half of the centre dial is inspired by the tidal patterns the moon's gravitational pull determines, and when taken together with the polished nickel hands and indexes, the overall effect is quite magnificent.

The complication most requested by our followers since CW was founded in 2004, in the C9 Moonphase we have created a timepiece that fulfils ours and our customers' common desire, but also one that, hopefully, does credit to the source of its inspiration, our waxing, waning, wondrous moon.



TECHNICAL INFORMATION

FEATURES

- 25 jewel, 128 year moonphase complication by Johannes Jahnke – JJ04
- Modified in Switzerland from ETA 2836-2 automatic movement by Johannes and his team
- Self-winding movement with 38 hour power reserve
- Date display at 6 o'clock
- Central hour, minute and second hands
- Stop-second hacking mechanism
- Large moonphase disk with 3-dimensional, deep stamped moons in either nickel or PVD gold finish
- One-piece metal dial with tidal pattern guilloché, raised indexes and hands finished in either nickel or PVD gold
- Hand finished, surgical grade, stainless steel case and crown
- Museum-grade sapphire crystal with AR08 anti-reflective coating
- Screw-down transparent case back
- Option of either embossed Italian leather strap, Alligator strap or stainless steel bracelet, each with Bader Deployment
- Luxury presentation case and owner's handbook.

TECHNICAL INFORMATION

Diameter:	40mm
Height:	13.5mm
Calibre:	JJ04 modification of ETA 2836-2
Vibrations:	28,800 per hour (4 Hz)
Timing Tolerance:	+20 / -10 seconds per day
Case:	316L stainless steel
Water Resistance:	5 BAR (50 metres)
Strap:	20mm



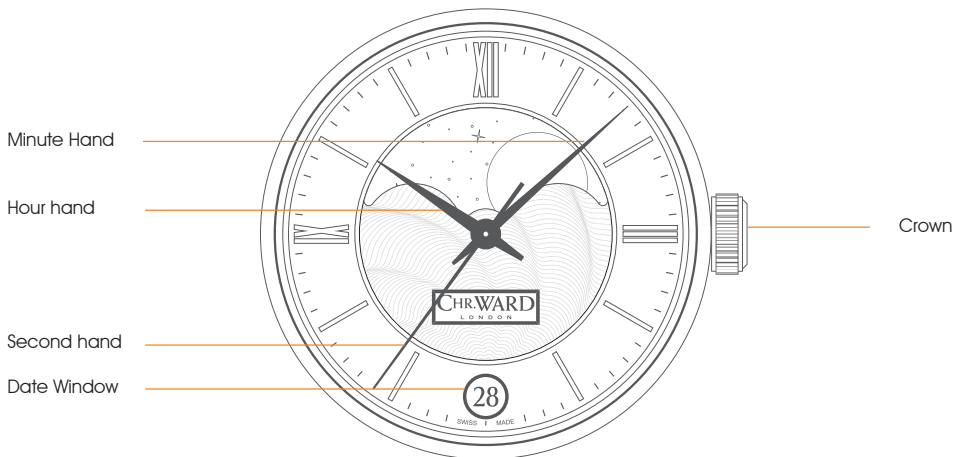
HOW TO OPERATE YOUR C9 MOONPHASE



DISPLAY AND CONTROL BUTTONS

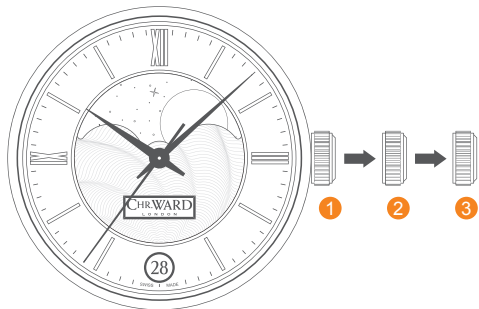
DISPLAY ELEMENTS

CONTROL BUTTONS



SETTING THE TIME/DATE

- Position ① is for winding in power. Wind in a clockwise direction to re-power the watch.
- Pull gently into position ②. For rapid date correction, turn in a clockwise direction.
- Pull gently into position ③. This position is used for handsetting, and stopping of the second hand.



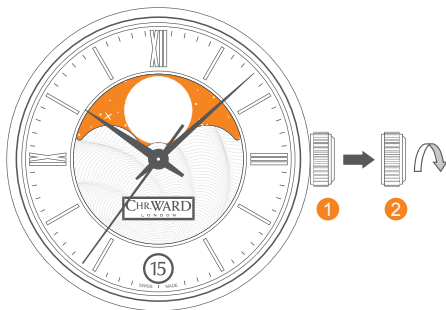
PLEASE NOTE: The date should not be changed during the date changing phase between 20.00 hrs and 02.00 hrs as the watch gearing will already be aligning itself to change the date.

RAPID ADJUSTMENT OF THE MOON PHASE

Setting the moon phase is relatively simple. For perfect synchronization, adjustment of the moon phase must be done after setting the current time and date. You will also need the date of the last full or new moon.

- To adjust the moon phase pull gently into position ②. Turn in an anti-clockwise direction to rotate the moonphase disk into the desired position.

PLEASE NOTE: Rapid correction of the moon phase is possible at any time without risk of damaging the mechanism.



THE MOON AND ITS PHASES

The phases of the moon cycle, from one new moon to the next one, lasts 29 days, 12 hours, 44 minutes and 2.8 seconds. The new moon corresponds to the first lunar day (fig. 1). The moon is not visible because its dark side is facing us.

On the 8th day (fig. 2), after completing one quarter turn, a crescent moon appears on the left-hand side of the moonphase window with the curve facing to the right.

On the 15th day of the lunar cycle (fig. 3), at the mid-point of its revolution, we see a fully illuminated circle at the 12 o'clock position, indicating the full moon. The moon at this point is directly opposite the sun.

On the 23rd day of the lunar cycle (fig. 4), at the end of its third quarter, the crescent appears on the right-hand side of the moonphase window. A new lunar cycle now commences.



Fig. 1



Fig. 2



Fig. 3



Fig. 4

The moon changes continuously between these characteristic positions. The time which has elapsed between two new moons corresponds to approximately one month.

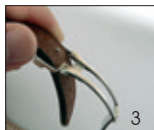
Due to the regular and repetitive nature of this movement and its phases, the moon has always served as a means of counting the passage of time. Indeed, this is why the lunar calendar is still used for timekeeping purposes.



STRAPS & BRACELETS

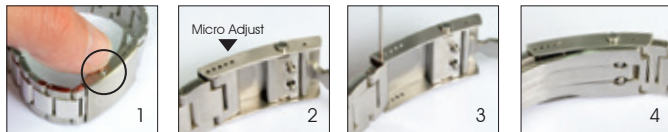
As you would expect, we place as much emphasis on the quality of our straps and bracelets as we do our watches. We only use the finest leathers for our straps. Similarly, we only use the finest metals in the construction of our bracelets, all of which are precision engineered for durability, efficiency and comfort. The following guidelines explain how easy it is to use and adjust your Christopher Ward strap or bracelet.

LEATHER STRAP WITH BADER DEPLOYMENT



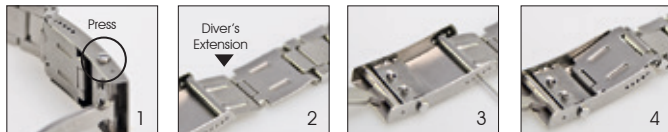
1. Press to release
2. Pull open the clasp
3. Locate the opening and thread the strap through
4. Close the clasp

BRACELET WITH MICRO-ADJUSTMENT



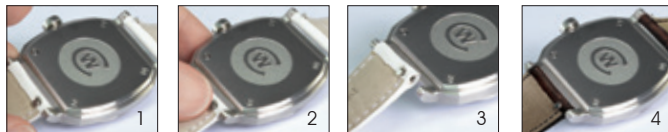
1. Press to release
2. Expand adjustment
3. Adjust pin position
4. Close the clasp

DIVER'S EXTENSION (WHERE APPLICABLE)



1. Press to release
2. Expand adjustment
3. Adjust pin position
4. Close the clasp

QUICK-RELEASE PINS (WHERE APPLICABLE)



1. Locate the release
2. Drag button back
3. Detach strap
4. Align holes to click a new strap in position

WATER RESISTANCE

Although your watch has been through vigorous static pressure testing, it is worth remembering that there are many variables that can affect the water resistance of your watch.

For instance, arm movements during swimming and the sudden impact of diving and water sports will drastically increase the pressure the watch is under. Wearing your watch in the bath, shower, or sauna can also have an effect as a rapid increase in temperature can cause seals to expand and in extreme cases, malfunction or create condensation.

For these reasons, the water resistance rating of your watch (as shown) **should only ever be considered a guideline** and we strongly recommend they are always adhered to.



1 BAR (10 METRES)

Safe to wear your watch while washing your hands with tap water.



3 BAR (30 METRES)

Washing your car and/or general hose pipe usage.



5 BAR (50 METRES)

Water resistant to most household shower units.



10 BAR (100 METRES)

Safe to use while snorkelling in open water.



30 BAR (300 METRES)

Ideal for experienced divers and those practising scuba-diving.



50 BAR (500 METRES)

Professional divers, experiencing prolonged exposure underwater.



100 BAR (1000 METRES)

Professional deep sea diving.

OUR WATCH CARE PROGRAMME

Your watch is constructed from the finest components and materials available including one of Switzerland's finest mechanical movements. As with all watches of this quality, with the right care and attention, your new Christopher Ward watch has the potential to become an heirloom piece giving further joy to future generations. It's for this reason we have created our industry leading approach to after-sales care, starting with our famous 60|60 Guarantee which remains the most comprehensive guarantee in the world of watchmaking.

Visit our website for more details about our 60|60 Guarantee and Service and Repair Programme.

60|60 GUARANTEE

1. 60 DAY FREE RETURNS

Our success depends on you being completely happy with your new Christopher Ward watch. You have up to 60 days to return your watch, absolutely free of charge, and receive a replacement or full refund by return – so long as it has not been worn and is returned in box-perfect condition.

2. 60 MONTH MOVEMENT GUARANTEE

Your watch, at its heart, has a top quality precision engineered Swiss movement – so it's very unlikely to give you problems with the minimum amount of care and attention, including a regular service. We recommend you return your watch to us every 3/4 years for a service, so our expert technicians can keep your fine timepiece in peak condition.

SERVICING & REPAIRS...THE CHRISTOPHER WARD WAY...

Our innovative approach to servicing and repairing your Christopher Ward watch means that having your watch serviced or repaired doesn't mean months of waiting followed by an exorbitant bill – which is more or less the experience guaranteed by every other luxury watch brand. We have developed an easy, quick and affordable expert service and repairs programme that doesn't cost the earth and has your watch back where it belongs – on your wrist – in double-quick time.

KEEPING IN TOUCH WITH CHRISTOPHER WARD

From small beginnings just a few short years ago (our first workshop was actually a refurbished chicken shed!), Christopher Ward has won a worldwide following for his eponymous watch brand and can justifiably claim to manufacture the most affordable luxury watches in the world.

For many, the philosophy behind the brand, of trying to put luxury watches within the reach of everyone, is as attractive as the watches themselves, as is the very open approach of the business which means that Chris and the team spend a lot of time communicating personally with our customers – many of whom have become friends.

As the owner of a Christopher Ward watch, if ever you need to get hold of us we are at your service. We have listed some useful contact details on the back cover.

There is also always something new going on at our website at **www.christopherward.co.uk** and, if you haven't already discovered the independent forum dedicated to our brand at **www.christopherwardforum.com** we would recommend a visit. Informative and fun, it's a great place to hear the unexpurgated view of Christopher Ward of London!

CHR. WARD

L O N D O N

HEAD OFFICE

Christopher Ward (London) Limited,
1 Park Street, Maidenhead,
Berkshire SL6 1SL United Kingdom
+44 (0)1628 763040

CUSTOMER SERVICES

UNITED KINGDOM: +44 (0)1628 763040
UNITED STATES OF AMERICA: +1.877.226.8224
customerservices@christopherward.co.uk
technical@christopherward.co.uk

WEBSITE

www.christopherward.co.uk
www.christopherward.com