

Time on your side

Your Christopher Ward watch has been designed in Britain and engineered in Switzerland by highly talented craftspeople. This ensures not only accurate and precise timekeeping, but also brings a real pride of ownership that only watches of the highest quality standards can hope to deliver.

You have made an investment, a good one, and the aim of this manual is to help you make the most of that investment in what we hope will be a lifetime of ownership.

Mike France
CEO & co-founder



C60 Anthropocene GMT

Every watch says something beyond telling the time.

And your C60 Anthropocene GMT is no exception.

Inspired by Christopher Ward Challenger, Tom Hicks, the C60 Anthropocene GMT is both a robust timing instrument – and a reminder of the fragility of the planet we live on.

Water-resistance to 600m. A Light-catcher™ case that sits snug on the wrist. A frosted sapphire dial that recalls the look of Arctic pack ice.

And power from the exceptional Sellita SW330-2 GMT movement that not only lets you monitor two time zones at once but also gives you a 56-hour power reserve.

The C60 Anthropocene GMT – ‘Anthropocene’ is the name of the era in which humans have affected the environment – won’t solve the climate crisis on its own. But take comfort that you’re supporting those who are trying to reverse the damage our species has done, one precisely measured tick at a time.

Features

- Swiss made
- 25 jewel self-winding mechanical movement
- Up to 56-hour power reserve
- GMT complication
- Date calendar
- Central hacking seconds
- Anti-shock system
- Twin-flag engraving over 'Colimaçoné' finish on the rotor
- Elaboré 'Colimaçoné' finish on the movement
- Frosted sapphire crystal dial with twin-flags logo at 12 o'clock
- Super-LumiNova® Grade X1 BL C1-filled hands and indexes
- Top-brushed gunmetal indexes with diamond polished facets
- Signature Trident counter-balance on seconds hand
- Brushed and polished Light-catcher™ stainless steel case
- Anti-reflective sapphire crystal
- Embossed screw-down crown
- Eco-friendly luxury presentation case and owner's handbook

Technical Information

Calibre	Sellita SW330-2
Case	Stainless steel
Diameter	42mm
Height	14.3mm
Lug to lug	49.32mm
Weight	95g
Water resistance	60 ATM (600 metres)
Vibrations	28,800 per hour (4Hz)
Timing tolerance	-20/+20 seconds per day
Strap width	22mm

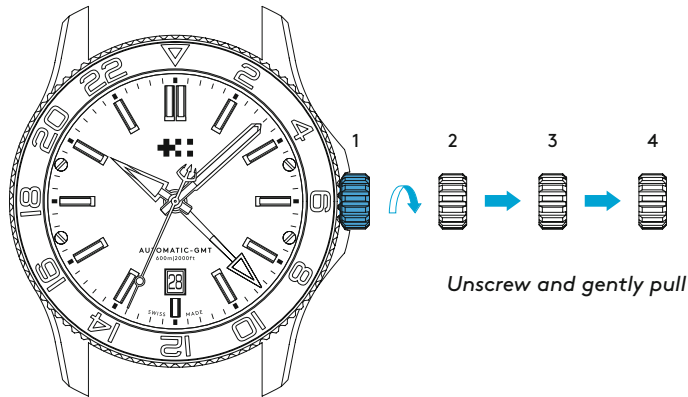


Setting the time, date and GMT hand

For a superior water resistance your crown is of the screw-down type. The crown should sit flush to the case (position **1**) in order to maintain water resistance.

- First unscrew the crown anti-clockwise from the case to position **2** for winding in power. Wind in a clockwise direction to re-power the watch. Your C60 Anthropocene GMT has a maximum power reserve of up to 56 hours when fully wound. Normal wearing will allow the rotor to start re-powering the watch over time after putting on your wrist.

- Pull gently into position **3**. For rapid date correction, turn in an anti-clockwise direction. To set the GMT hand, turn the crown clockwise and rotate the hand until you have reached the desired time indication. The GMT hand moves in one-hour increments.
- Pull gently into position **4**. This position is used for handsetting and stopping of the seconds hand. For precise time setting it is recommended to pass beyond the desired minute and to set the hand backwards.



1. Crown screw-down position
2. Manual winding
3. Date/GMT setting
4. Time setting

PLEASE NOTE:

*Date correction should not be carried out between 20.00 hr and 02.00 hr as the watch gearing will already be aligning itself to change the date. The crown should always be pushed in after adjustment, and it is best to do so from position **3** to avoid advancing beyond the desired date. You must always ensure the crown is fully tightened before any use in water.*

Using the GMT hand for travel

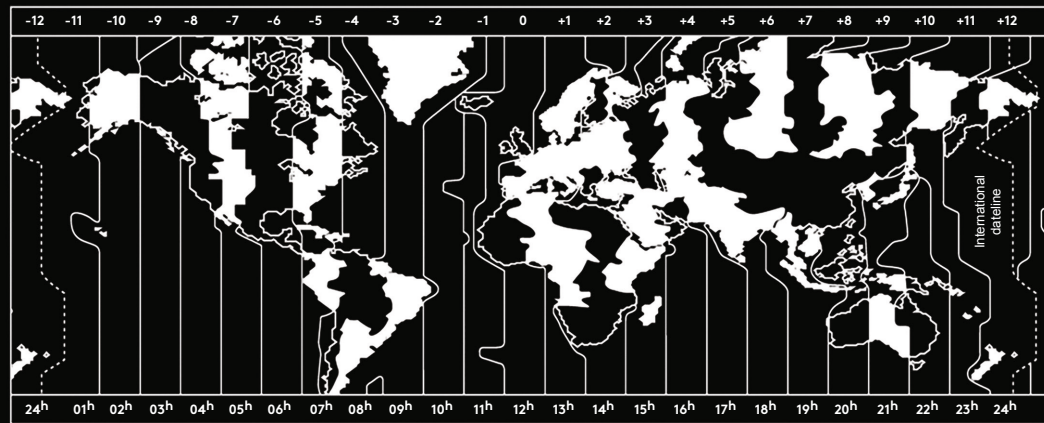
Set the time in your new destination by pulling the crown into position **4** and move the hour/ minute hands until they indicate the desired time.

Push crown into position **3** and wind, clockwise, the GMT hand around the 24-hour scale on the bezel until you have the right time at home. E.g. If you're travelling from London at 12.10 to New York, you would turn the hour/minute hands to 7.10 (New York time is five hours behind London) and wind the GMT hand around to the 12.10 position.

Once set, it means that, for example, you can gauge the time to ring your friends and family without waking them in the middle of the night.

PLEASE NOTE:

The table opposite can be used to determine the appropriate time zone when setting the hour/minute hands.



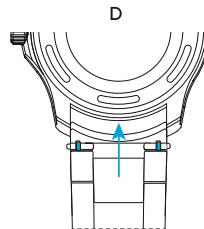
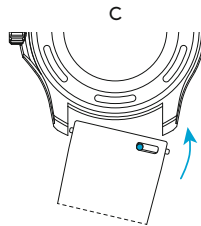
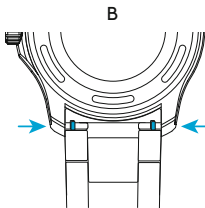
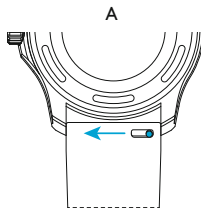
Straps and bracelets

As you would expect, we place as much emphasis on the quality of our straps and bracelets as we do our watches. We only use the finest materials in our straps, with quick-release pins also included for your convenience.

The following guidelines explain how easy it is to use, adjust and replace your Christopher Ward strap or bracelet.

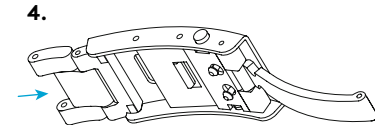
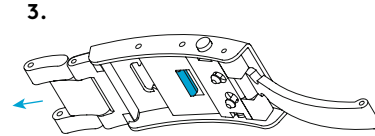
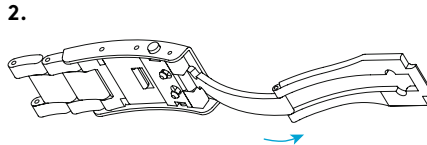
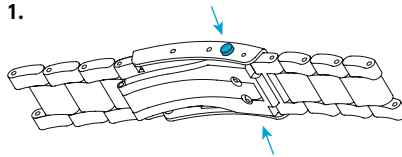
Using the quick-release pins on your strap/bracelet

1. Locate the quick-release pin (or pins) on your strap (A) or bracelet (B). Pull the pin(s) inwards to detach.
2. To reattach your strap (C) or bracelet (D), pull the pin(s) inwards, and align the spring bars so that they click securely into the lug holes on each side.



How to use the micro adjustment on your bracelet

1. Press buttons to release.
2. Pull open the clasp.
3. There are five micro adjustment positions, which allows for a maximum extension of 8.4mm. To extend, pull the lever to unlock and simultaneously pull on the bracelet into the desired position.
4. To shorten, simply push the bracelet back into the clasp.



Water resistance

Although your watch has been through vigorous static pressure testing, it is worth remembering that there are many variables that can affect the water resistance of your watch. For instance, arm movements during swimming and the sudden impact of diving and water sports will drastically increase the pressure the watch is under.

Wearing your watch in the bath, shower, or sauna can also have an effect as a rapid increase in temperature can cause seals to expand and in extreme cases, malfunction or create condensation.

For these reasons, the water resistance rating of your watch (as shown) should only ever be considered a guideline and we strongly recommend they are always adhered to.



1 ATM (10 metres)

Safe to wear your watch while washing your hands with tap water



15 ATM (150 metres)

Safe to use while snorkelling in open water



100 ATM (1000 metres)

Professional deep sea diving



3 ATM (30 metres)

Washing your car and/or general hose pipe usage



30 ATM (300 metres)

Ideal for experienced divers and those practising scuba-diving



5 ATM (50 metres)

Water resistant to most household shower units



60 ATM (600 metres)

Professional divers, experiencing prolonged exposure underwater

60|60 Guarantee

Your watch is constructed from the finest components and powered by a Swiss mechanical movement. As with all quality watches, with the right care and attention, your new timepiece has the potential to become an heirloom, giving joy to future generations.

It's for this reason we've created an industry-leading approach to after-sales care, starting with our famous 60|60 Guarantee – the most comprehensive warranty in watchmaking.

60-day free returns

We hope you'll be happy with your watch from the moment it arrives. However, if that's not the case you have 60 days to return it in perfect, unused condition (with all its accompanying paperwork) in order to receive a replacement or full refund.

60-month movement guarantee

Your watch is powered by a precision-engineered Swiss movement. In the rare event that your movement develops a fault within five years we'll repair it for free under warranty. Your watch will need to be sent to us for a full diagnosis before processing a repair under warranty. We will always keep you informed before carrying out any work.

Service and repairs: the Christopher Ward way

Our approach to service and repairs is about uncompromised quality and great value for money. The process, led by our expert technicians, won't cost the earth and will have the watch back on your wrist in reasonable time. We recommend you service your watch every three to four years to keep it in peak condition.

PLEASE NOTE:

The 60|60 Guarantee does not cover accidental damage. Any service or repair by a third-party retailer will void your 60|60 Guarantee. For more details, please visit our website.

Contact us

Keeping in touch with Christopher Ward

From humble beginnings in 2004 (our first workshop was a refurbished chicken shed!) Christopher Ward has won a global following – and can justifiably claim to make the most affordable luxury watches in the world.

For many of our fans, the philosophy of trying to put luxury watches within the reach of everyone, is as smart as the timepieces themselves. This open approach sees co-founders Mike France and

Peter Ellis communicate personally with customers and listen to their feedback. Something that helps us improve our offering to you. As the owner of a Christopher Ward watch, if you ever need to get hold of us we're at your service. And if you'd like to explore the CW world more, you can follow us on social media.



@ChristopherWardLondon



@ChrisWardLondon