



C63 True GMT
Owner's handbook



Time on your side

Your C63 True GMT watch has been designed in England and handbuilt in Switzerland by highly talented craftspeople. This ensures not only accurate and precise timekeeping, but also brings a real pride of ownership that only watches of the highest quality standards can hope to deliver.

You have made an investment, a good one, and the aim of this handbook is to help you make the most of that investment in what we hope will be a lifetime of ownership.

Mike France

CEO & co-founder

Mike

 Christopher
Ward



The features and technical details of your C63 True GMT

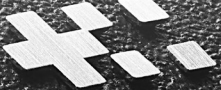
- Swiss Made COSC-certified chronometer with Côtes de Genève finishing
- Self-winding in-house Calibre CW-002 with True GMT function
- 120-hour power reserve with indicator
- Brushed and polished Light-catcher™ stainless steel case
- Embossed screw-down crown
- Anti-reflective box sapphire crystal and exhibition caseback
- Multi-layer dial with polished bevel detailing and applied indexes
- Hand-polished GMT bridge
- Eco-friendly luxury presentation case with owner's handbook

Calibre:	Calibre CW-002
Jewels:	33
Frequency:	28,000 vph (4 Hz)
Power reserve:	120 hours
Timing tolerance:	-4/+6 secs per day
Complications:	Date, Power Reserve Indicator and True GMT
Material:	Stainless steel
Diameter/Weight:	40.50mm : 74.15g
Height:	14.15mm
Lume:	Super-LumiNova® Grade X1 BL C1
Water resistance:	10 ATM (100 metres)
Strap width:	22mm



5 DAYS RESERV

CHRONOMETER



18

14

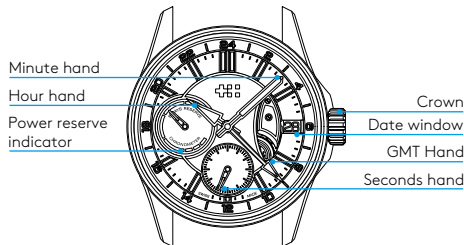
SWISS

Display and controls

Your C63 True GMT has a maximum power reserve of 120 hours when fully wound.

To re-power the watch after a period of non-use, unscrew the crown by turning it anti-clockwise until it releases from the case and moves to Position 1. In this position, turn the crown clockwise approximately 78 times to fully wind the watch and achieve maximum power reserve.

Normal wearing will very quickly allow the rotor to start re-powering the watch over time after putting it on your wrist.



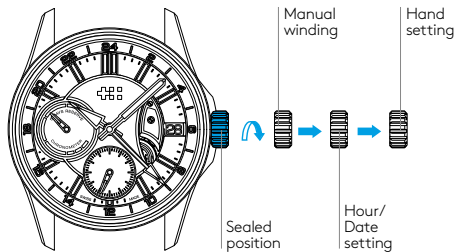
Setting the time, date and hour hand

Unscrew the crown by turning it anti-clockwise until it releases from the case and moves to Position 1.

To adjust the local hour hand, gently pull the crown out to Position 2. Turn the crown in either direction to move the hour hand in one-hour increments until the desired local time is reached.

Position 2 is also used to adjust the date. The date advances automatically as the local hour hand passes midnight and cannot be adjusted independently. To set the correct date, continue advancing or reversing the hour hand in one-hour increments until the desired date is displayed.

For full hand-setting, gently pull the crown out to Position 3. In this position, the seconds hand stops to allow precise time setting. Turn the crown to set the hour, minute, and GMT hands. The GMT hand can only be adjusted in this standard time-setting position and cannot be moved independently.



For precise time setting, it is recommended to advance the minute hand slightly past the desired time and then turn it back to align exactly.

*The screw-down crown should sit flush to the case in order to maintain water resistance.

Using the GMT hand for travel

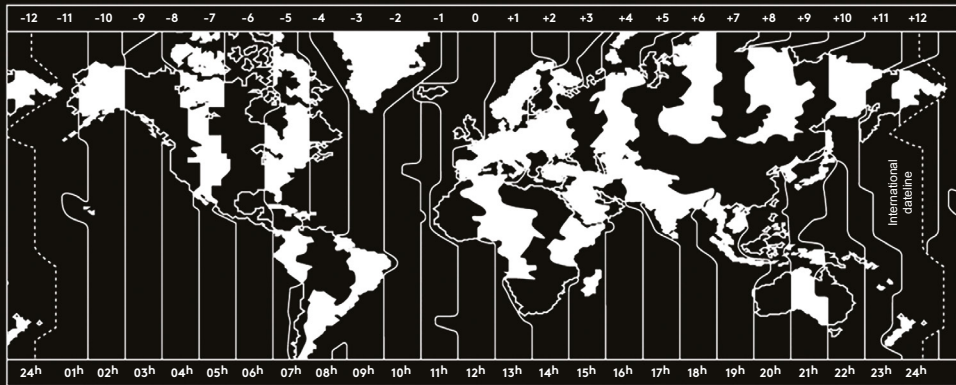
To set the time in your new destination, pull the crown gently to Position 2 and turn it in either direction to move the local hour hand in one-hour increments until it indicates the correct local time. The minute hand remains stationary during this adjustment, and the date will advance or reverse automatically as the hour hand passes midnight.

For example, when travelling from London at 12:10 to New York, you would move the hour hand back five one-hour increments until it reads 7:10, as New

York is five hours behind London. The GMT hand will continue to indicate London time on the 24-hour scale.

Once set, the GMT hand provides a constant reference to home time, allowing you to check the time there at a glance without the risk of calling friends or family in the middle of the night.

The table below can be used to determine the appropriate time zone when setting the hour/minute hands.

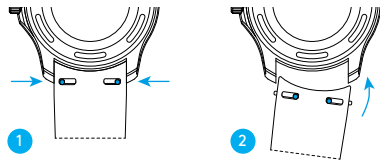




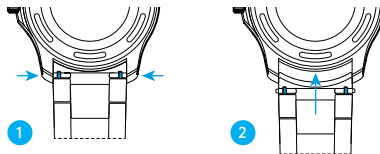
Changing your strap

- 1 Locate the quick-release pins on your strap or bracelet. Pinch the pins inwards to detach.
- 2 To reattach your strap or bracelet, pinch the pins inwards, and align the spring bars so they click securely into the lug holes on each side.

Detaching and reattaching a strap

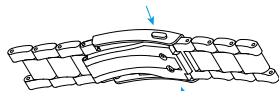


Detaching and reattaching a bracelet

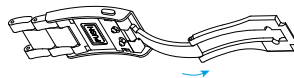


Using the micro adjustment on your bracelet

- 1 Press buttons to release.
- 2 Pull open the clasp.
- 3 There are three micro adjustment positions, which allows for a maximum extension of 6mm. To extend, push the button to unlock and simultaneously pull on the bracelet into the desired position.
- 4 To shorten, simply push the button and then slide the bracelet back into the clasp.



1



2



3



4

Servicing your watch

Our approach to service is about uncompromised quality and great value for money. The process, led by our expert technicians, won't cost the earth and will have the watch back on your wrist in reasonable time. We recommend you service your watch every three to four years to keep it in peak condition.



Your 60|60 Guarantee

Your Christopher Ward watch is covered by our industry-leading 60|60 Guarantee.

This means that you can return it 60 days after purchase and receive a full refund (as long as the watch is in perfect condition).

And if your watch develops a mechanical fault within five years (60 months), we'll repair it for free. Please use the warranty card opposite to arrange this.

If you ever need to get hold of us we're at your service. And if you'd like to explore the CW world more, you can follow us on social media.



ChristopherWardLondon



@chriswardlondon