

**C70** 3527 GT CHRONOMETER  
LIMITED EDITION

OWNER'S HANDBOOK

CHR. WARD  
L O N D O N

## TIME ON YOUR SIDE...

Your Christopher Ward watch has been designed and engineered by highly talented craftspeople to ensure not only accurate and precise timekeeping but also to bring a real pride of ownership that only luxury items of the highest quality can ever hope to deliver.

You have made an investment, a good one, and the aim of this handbook is to help you make the most of that investment during what I hope will be a lifetime of ownership.

A handwritten signature in black ink, reading 'Chris', with a stylized flourish at the end.

Christopher Ward

### CONTENTS

THE FERRARI 250 GTO	2-3
A PRECIOUS FRAGMENT OF MOTORSPORT HISTORY	4-5
C70 3527 GT CHRONOMETER LIMITED EDITION	6-7
TECHNICAL INFORMATION	8-9
THE COSC CERTIFIED CHRONOMETER	10-11
HOW TO OPERATE YOUR C70 CHRONOMETER	12-25
OUR WATCH CARE PROGRAMME	27
KEEPING IN TOUCH	28

## THE FERRARI 250 GTO

**"It's simply the greatest road-going Ferrari, as well as a great racer", says Ferrari 250 GTO owner and Pink Floyd drummer, Nick Mason, "Like a good musical instrument can turn a mediocre musician into a good one, the 250 GTO makes a bad driver good, a good driver great, while a great driver can get the trophy engraved without bothering to race,"**

It's a view that is obviously shared by the unnamed buyer who paid Connecticut based collector Paul Pappalardo \$52 million dollars for chassis #5111 GT in October 2013 – a world record amount for a car – but for many, the Ferrari 250 GTO is the greatest car ever built and, as such, is priceless.

And yet, the world has the launch of the Jaguar E-Type at the Geneva Motor Show in 1961 to thank for the creation of the 250 GTO. Jaguar's new GT had Enzo Ferrari all in a dither and he insisted his senior engineer, Giotto Bizzarrini, come up with something to beat it. Ultimately, after a typical Ferrari in-fight which saw Bizzarrini (as well as a few others) fired, another engineer, Mauro Forghieri and designer Segio Scaglietti, completed the car but it was Bizzarrini's team who must take the lion's share of the credit.

Bizzarrini decided to modify the GTO's forerunner, the 250 SWB, by moving the engine behind the front axle for better weight distribution. His team then gave the 2953 cc V12 engine a major massage, adding Testa Rossa heads, larger valves and six double-barrel Weber carburetors. The result was a car with astonishing poise and power as well as an engine tone, especially at 7000 rpm, that has to be heard to be believed.

And then there are those voluptuous, Beyoncé like curves, particularly across the bonnet and wings. Is it any wonder that this is the car most of the baby boomer generation grew up lusting after?

The car's racing pedigree is equally impressive. Homologated (approved) by the FIA for the Group 3 Grand Touring category, the 250 GTO was one of the last successful front engine racing cars. It finished second in its debut race, the 12 hours of Sebring, in 1962 and, more famously, won the International Championship for GT Manufacturers in the three years, 1962 to 1964. Its place in history was now assured.



## A PRECIOUS FRAGMENT OF MOTORSPORT HISTORY

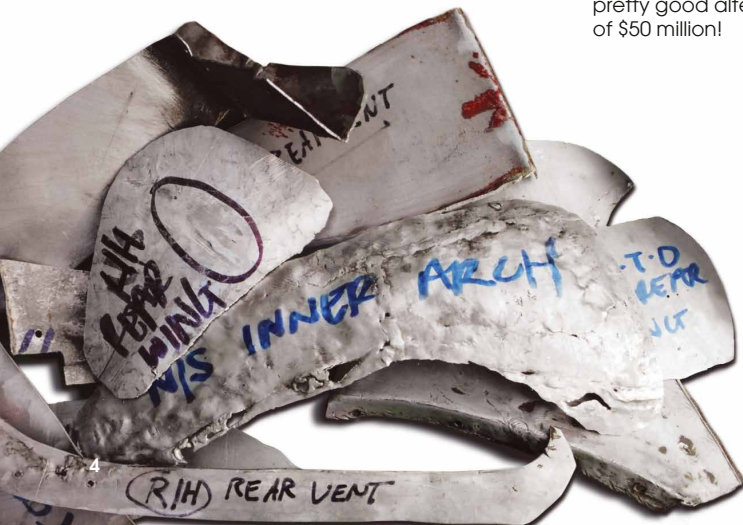
A few years ago historian Christopher Bennett acquired some fragile aluminium body panels from a 1962 Ferrari 250 GTO car during restoration activities. Bennett's London-based business, TMB Art Metal, scrupulously salvages original metals from very rare historic cars and aircraft and recycles it into unique collectible artefacts, such as cufflinks made from the remnants of a famous 1940 Battle of Britain Hurricane fighter. When he approached Christopher Ward Watches with an idea for a collaboration, the motor racing fanatics at CW's Maidenhead HQ took little persuading.

The "donor" material used in our 100 piece special limited edition chronometer originates from chassis number 3527GT, the seventh example built which left Ferrari's Maranello

factory on 22nd May 1962 and now bears the British registration "6 GTO".

Following a change of ownership, 3527GT underwent restoration in 2005/6 during which a small quantity of excessively corroded or damaged original exterior body panel sections were removed. It is from this very material that our master watchmaker, Johannes Jahnke, has overseen the task of cutting the discs and setting them beneath the finest museum-grade sapphire crystal. Even the number 6 of the registration plate has been carefully laser cut to replicate its shape perfectly.

To own a GTO may be out of reach of most of us but wearing a piece of this fabled car within a fine Christopher Ward timepiece is a pretty good alternative to spending upwards of \$50 million!



*Left:* The new owner of 3527GT was keen that the car should remain as original as possible and only small sections of aluminium panelling were removed, these being pieces deemed beyond recovery and that if left in situ would only deteriorate further.



*Top: The 3527GT heading the grid - Monterey 1962*

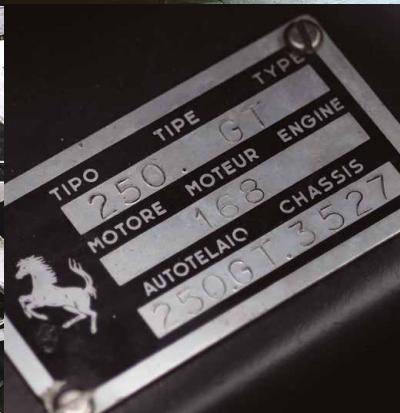
*Middle L-R: The GTO's body panelling, separated from chassis, is exposed pending removal of terminally damaged or corroded sections.*

A badly corroded and poorly repaired section of front wheel arch is surgically removed by skilled craftsmen.

*Bottom L-R: This is the extent of the original panelling removed from 3527GT during its restoration, only a tiny percentage of the total body shell.*

6 GTO's original chassis plate, identifying it as a 1962 vintage 3527GT.

Johannes Jahnke carefully preparing the historic metal to allow us to incorporate a medallion into the backplate of each of the 100 pieces of the special limited edition.



## C70 3527 GT CHRONOMETER LIMITED EDITION



In partnership with TMB Art Metal we are proud to offer you the chance of owning a small piece of one of the world's most iconic, and not to say valuable, cars – the Ferrari 250 GTO.

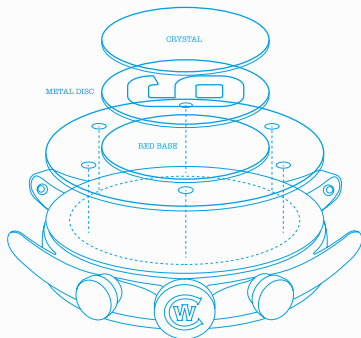
Embedded behind museum-grade sapphire crystal in the back-plate of this stunning chronometer is an original piece of exterior panelling from the seventh GTO (only 39 were ever built), which left the Ferrari factory on 22nd May, 1962. The date is actually featured in the watch's tachymeter.

To understand the GTO's importance in the annals of automotive history, one needs only to recall the world record \$52 million spent by an unnamed buyer in October 2013 to secure chassis number 5111GT from Connecticut-based collector Paul Pappalardo.

The chassis number of the C70's car, 3527GT, gives this strictly limited watch its nomenclature, and this is indicated on the side of the case.

The traditional Ferrari colouring of the beautifully executed dial serves as an impressive overture for the back-plate of the watch. The piece of original metal has been skillfully cut by experts in Switzerland to allow the numeral 6 from the car's number-plate to be shown in glorious Rosso Corsa livery.

To own a Ferrari 250 GTO is an impossible dream for all but a handful of billionaire collectors and ageing rock stars (Nick Mason of Pink Floyd owns one); but for a fortunate few, the dream can be at least partially realised in owning the C70 3527 GT.





# TECHNICAL INFORMATION

## FEATURES

- Swiss made chronometer
- Worldwide limited edition of only 100 pieces
- Includes historic precious metal from the seventh Ferrari 250 GTO in back-plate
- Thermo-compensated, 27 jewel, Swiss quartz chronometer with COSC Certification
- Chronograph with split minutes/seconds/tenth seconds
- Marine-grade stainless steel case
- Internal tachymeter bezel with Ferrari GTO-6 date markings
- Screw-in crown
- Museum-grade anti-reflective sapphire crystal covering dial and GTO metal disc on back-plate
- Water resistance 10 ATM
- Vintage Italian leather strap with Bader deployment
- Individually engraved serial number
- Deluxe presentation case and special edition owner's handbook including certificate of authenticity

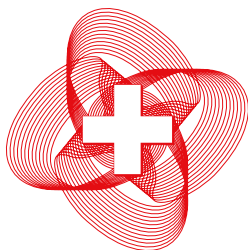
## TECHNICAL INFORMATION

Diameter:	42mm
Height:	11.8mm
Weight:	80g
Calibre:	ETA 251.233 COSC
Case:	316L stainless steel
Water Resistance:	10 ATM (100 metres)
Strap:	22mm Leather



## THE COSC CERTIFIED CHRONOMETER

To gain chronometer status, watchmakers submit their Swiss movements to COSC, an independent, non-profit making watch accuracy verification organisation based in Geneva, to be tested against the international standards of ISO and DIN.



# COSC

---

CONTRÔLE OFFICIEL SUISSE  
DES CHRONOMÈTRES  
BUREAU DE GENÈVE

Certification follows exhaustive testing. In achieving the coveted status of Certified Chronometer, a movement must not only be made from the highest quality components, but also be the object of special care on part of the finest horologists and technicians as it is painstakingly assembled.

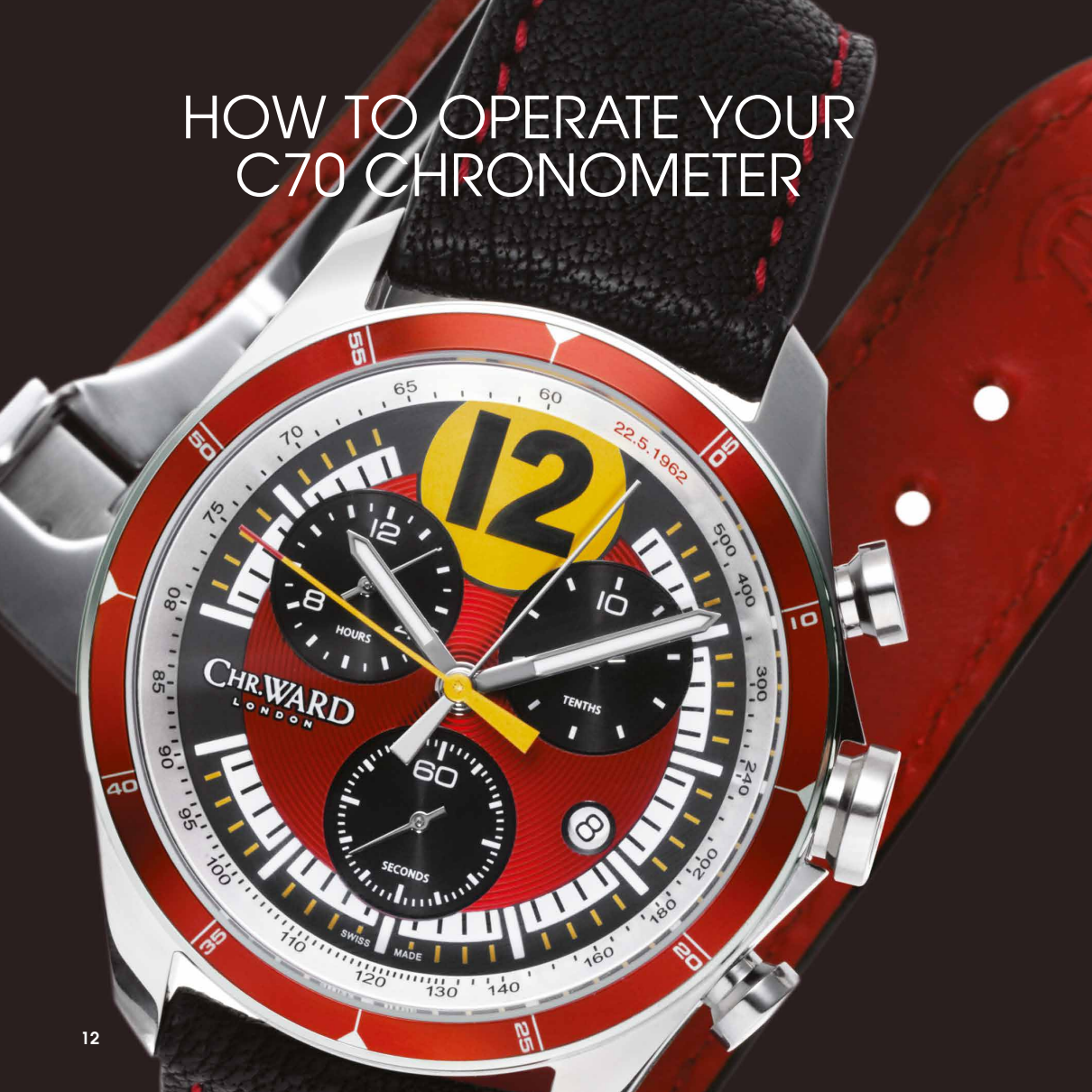
Only movements which meet the precision criteria are granted an official certificate. Each uncased movement is individually tested for fifteen days, in five positions, at three different temperatures. Movements are fitted with a second hand for tests and measurements are made daily with the aid of cameras. Based on all of these measurements, seven eliminatory criteria are calculated, each of which must be met.

The exacting and rigorous nature of the COSC certification process means that the achievement of Certified Chronometer status is extremely rare. In fact, of all the watches produced in Switzerland each year, **just 3% bear the coveted COSC 'bulletin de marche'** or certificate of watch performance. Which is why, when you read the words 'Certified Chronometer' on a Swiss watch you can be sure that the movement behind the elegant dial is a rare example of fine Swiss watchmaking which is accurate, precise... **and extremely rare.**





# HOW TO OPERATE YOUR C70 CHRONOMETER





## DISPLAY AND CONTROL BUTTONS

### DISPLAY ELEMENTS

Minute Hand

Tenths counter

60 Minute counter

Hour hand

Hour counter

60 Second counter

Seconds

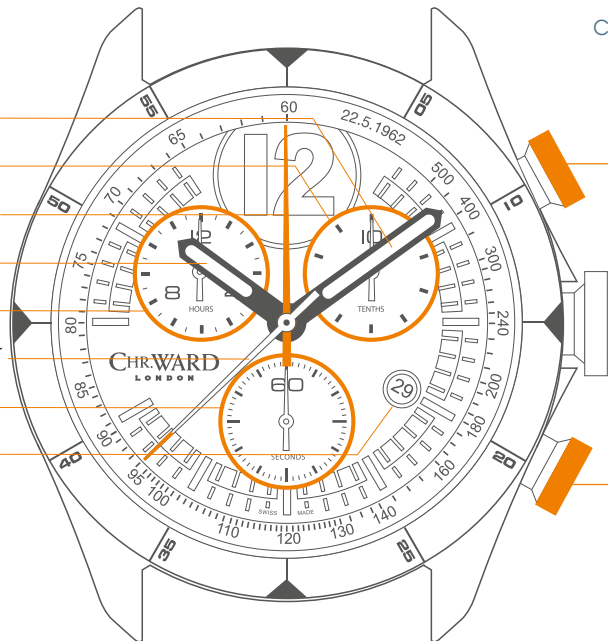
Date Window

### CONTROL BUTTONS

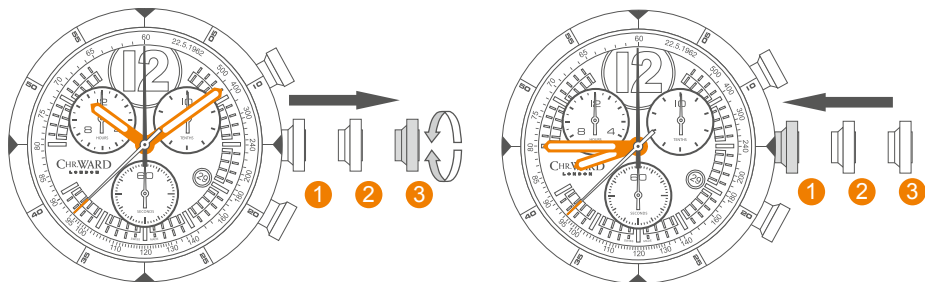
Push-button A

Crown

Push-button B



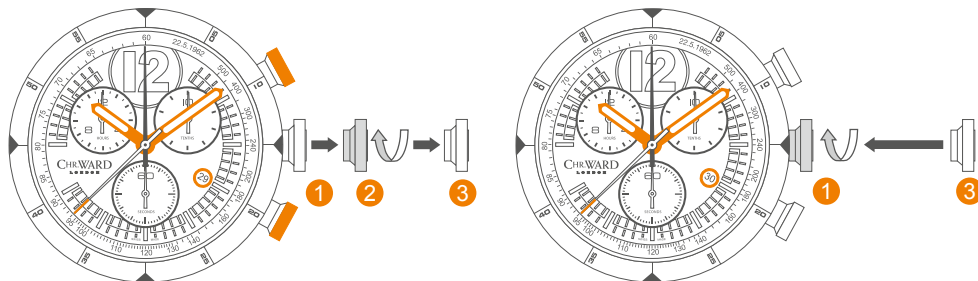
## SETTING THE TIME



For a superior water resistance your crown is of the screw-in type. To get to position ① turn the crown anti-clockwise until it releases itself.

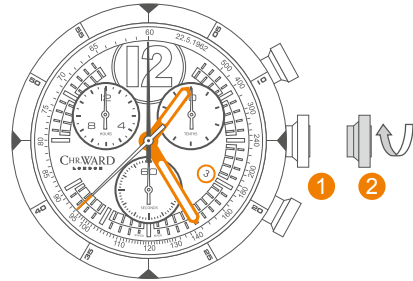
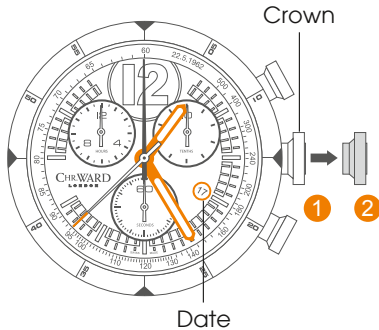
- Pull out the crown to position ③ (the watch stops).
- Turn the crown until you reach the correct time e.g. **08.45 hr.**
- Push the crown back into position ① and screw the crown in a clockwise direction in order to maintain water resistance. The crown should sit flush to the case.

## SETTING THE DATE (QUICK MODE)



- Pull out the crown to position 2 (the watch continues to run).
- Turn the crown clockwise, the hour hand moves in one hour increments until the correct date appears. The date will change when the hour hand passes 12.
- Pull the crown to position 3
- Push the crown back into position 1 until flush with the case and screw in.

## SETTING THE DATE/TIME

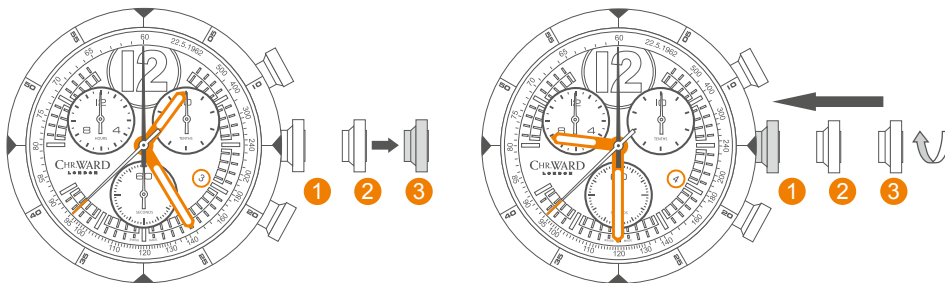


### Example:

Date / time on the watch: **17th / 01.25 hr**

Present date / time: **4th / 21.25 hr**

- Pull out the crown to position **2** (the watch continues to run).
- Turn the crown clockwise until yesterday's date appears ie. **3rd**.



- Pull out the crown to position 3 (the watch stops).
- Turn the crown clockwise until the correct date ie. **4th** appears (after passing through midnight).
- Continue to turn the crown until the correct time 21.30 hr appears.
- Push the crown back into position 1 until flush with the case and screw in.



## CHRONOGRAPH FUNCTIONS:

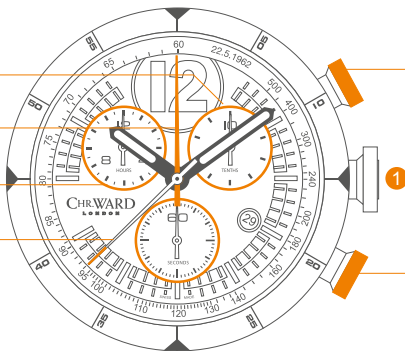
### DISPLAY ELEMENTS

Tenths

60 Minute counter

Hour counter

60 Second counter



### CONTROL BUTTONS

Push-button A  
(Start / Stop)

Push-button B  
(Reset)

- The **hour counter** measures 12 hours per rotation.
- The **minute counter** measures 60 minutes per rotation.
- The **centre stop-second** measures 60 seconds per rotation.
- The **1/10 second counter** measures 1 second per rotation.

PLEASE NOTE: Before using the chronograph functions, please ensure that:

- The crown is in position **1** (screwed in).
- The 4 chronograph hands are at zero position. Should this not be the case, the positions of the hands must be adjusted (see the chapter entitled 'Adjusting the chronograph hands to zero position').

## BASIC FUNCTIONS

(START / STOP / RESET)

**Example:**

- ❶ **Start:** Press push-button A.
- ❷ **Stop:** to stop the timing, press push-button A once more and read the 4 chronograph counters: 4 min / 38 sec / 6/10 sec.
- ❸ **Zero positioning:** Press push-button B. (The 4 chronograph hands will be reset to their zero positions).

**Example of use:**

Timing a runner over 100m.



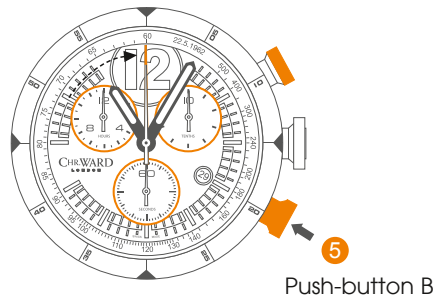
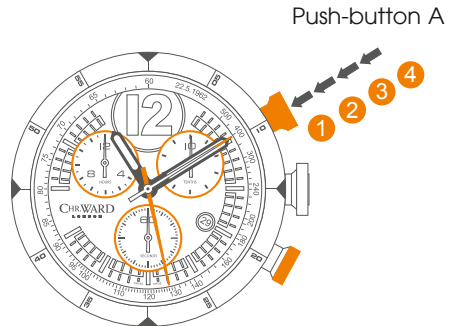
## ACCUMULATED TIMING

### Example:

- ➊ **Start:** (start timing).
- ➋ **Stop:** (e.g. 15 min 5 sec following ➊).
- ➌ **Restart:** (timing is resumed).
- ➍ **Stop:** (e.g. 13 min 5 sec following ➌).  
= 28 min 10 sec (accumulated measured time is shown)
- ➎ **Reset:** The 4 chronograph hands are returned to their zero positions.
- ➏ **Repeat:** as necessary.

### Example of use:

Overall time to complete a journey less the coffee breaks.



## INTERMEDIATE OR INTERVAL TIMING

### Example:

➊ **Start:** (start timing).

➋ **Display interval:**  
e.g. 10 minutes 10 seconds (timing continues in the background).

\* ➌ **Making up the measured time:**  
(the 4 chronograph hands are quickly advanced to the ongoing measured time).

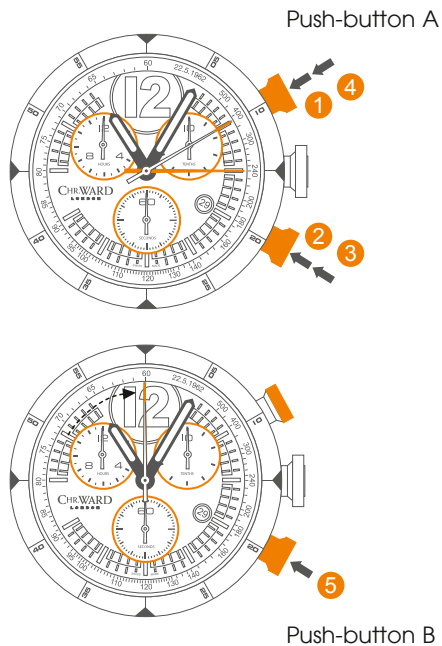
➍ **Stop:** (final time is displayed).

➎ **Reset:** The 3 chronograph hands are returned to their zero positions. →

### Please note:

\* Following ➌, further intervals or intermediates can be displayed by pressing **push-button B**.

**Example of use:** 4 x 100m relay.

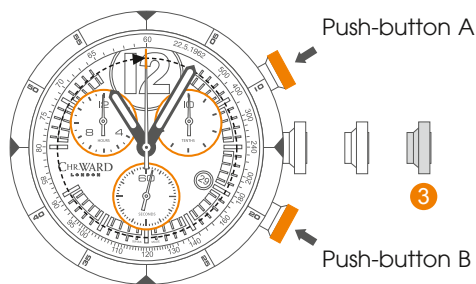
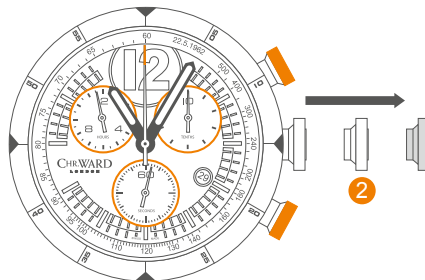


## ADJUSTING CHRONOGRAPH HANDS TO ZERO POSITION

### Example:

One or several chronograph hands are not in their correct zero positions and have to be adjusted (e.g. following a battery change).

- Pull out the crown to position ② press **Button A** to adjust the hour chronograph hand and **Button B** to reset the 60 minute counter to zero
- Pull out the crown to position ③. Push **Button A** to adjust the stop second hand and **Button B** to adjust the tenths seconds hand.





## WATER RESISTANCE

Although your watch has been through vigorous static pressure testing, it is worth remembering that there are many variables that can affect the water resistance of your watch.

For instance, arm movements during swimming and the sudden impact of diving and water sports will drastically increase the pressure the watch is under. Wearing your watch in the bath, shower, or sauna can also have an effect as a rapid increase in temperature can cause seals to expand and in extreme cases, malfunction or create condensation.

For these reasons, the water resistance rating of your watch (as shown) **should only ever be considered a guideline** and we strongly recommend they are always adhered to.



### **1 ATM (10 METRES)**

Safe to wear your watch while washing your hands with tap water.



### **3 ATM (30 METRES)**

Washing your car and/or general hose pipe usage.



### **5 ATM (50 METRES)**

Water resistant to most household shower units.



### **10 ATM (100 METRES)**

Safe to use while snorkelling in open water.



### **30 ATM (300 METRES)**

Ideal for experienced divers and those practising scuba-diving.



### **50 ATM (500 METRES)**

Professional divers, experiencing prolonged exposure underwater.



### **100 ATM (1000 METRES)**

Professional deep sea diving.

## STRAPS & BRACELETS


As you would expect, we place as much emphasis on the quality of our straps and bracelets as we do our watches. We only use the finest leathers for our straps and our premium alligator straps are all ethically sourced from CITES approved farms in Louisiana.

Similarly, we only use the finest metals in the construction of our bracelets, all of which are precision engineered for durability, efficiency and comfort. The following guidelines explain how easy it is to use and adjust your Christopher Ward strap with Bader deployment.

### LEATHER STRAP WITH BADER DEPLOYMENT



1. Press to release
2. Pull open the clasp
3. Locate the opening and thread the strap through
4. Close the clasp



"We have taken as much  
care developing the Bader  
deployment as we would  
take modifying a movement"



## OUR WATCH CARE PROGRAMME

Your watch is constructed from the finest components and materials available, including one of Switzerland's finest mechanical movements. As with all watches of this quality, with the right care and attention, your new Christopher Ward watch has the potential to become an heirloom piece giving further joy to future generations. It's for this reason we have created our industry leading approach to after-sales care, starting with our famous 60/60 Guarantee which remains the most comprehensive guarantee in the world of watchmaking.

Visit our website for more details about our 60/60 Guarantee and Service and Repair Programme.

Christopher Ward's 60/60 Guarantee is designed to deliver you complete peace of mind and the best support possible throughout the lifetime of your ownership. The guarantee has two key elements and sits alongside our Servicing and Repairs Programme:

### 60/60 GUARANTEE

#### 1. 60 DAY FREE RETURNS

Our success depends on you being completely happy with your new Christopher Ward watch. You have up to 60 days to return your watch, absolutely free of charge, and receive a replacement or full refund by return – so long as it has not been worn and is returned in box-perfect condition.

#### 2. 60 MONTH MOVEMENT GUARANTEE

Your watch, at its heart, has a top quality precision engineered Swiss movement – so it's very unlikely to give you problems with the minimum amount of care and attention, including a regular service. We recommend you return your watch to us every 3/4 years for a service, so our expert technicians can keep your fine timepiece in peak condition.

### SERVICING & REPAIRS...

#### THE CHRISTOPHER WARD WAY...

Our innovative approach to servicing and repairing your Christopher Ward watch means that having your watch serviced or repaired doesn't mean months of waiting followed by an exorbitant bill – which is more or less the experience guaranteed by every other luxury watch brand. We have developed an easy, quick and affordable expert service and repairs programme that doesn't cost the earth and has your watch back where it belongs – on your wrist – in double-quick time.



## KEEPING IN TOUCH WITH CHRISTOPHER WARD

From small beginnings just a few short years ago (our first workshop was actually a refurbished chicken shed!), Christopher Ward has won a worldwide following for his eponymous watch brand and can justifiably claim to manufacture the most affordable luxury watches in the world.

For many, the philosophy behind the brand, of trying to put luxury watches within the reach of everyone, is as attractive as the watches themselves, as is the very open approach of the business which means that Chris and the team spend a lot of time communicating personally with our customers – many of whom have become friends.

As the owner of a Christopher Ward watch, if ever you need to get hold of us we are at your service. We have listed some useful contact details on the back cover.

There is also always something new going on at our website at [www.christopherward.co.uk](http://www.christopherward.co.uk) and, if you haven't already discovered the independent forum dedicated to our brand at [www.christopherwardforum.com](http://www.christopherwardforum.com) we would recommend a visit. Informative and fun, it's a great place to hear the unexpurgated view of Christopher Ward of London!

# CHR. WARD

L O N D O N

## **HEAD OFFICE**

Christopher Ward (London) Limited,  
1 Park Street, Maidenhead,  
Berkshire SL6 1SL United Kingdom  
+44 (0)1628 763040

## **CUSTOMER SERVICES**

UNITED KINGDOM: +44 (0)1628 763040  
UNITED STATES OF AMERICA: 1.877.226.8224  
[customerservices@christopherward.co.uk](mailto:customerservices@christopherward.co.uk)  
[technical@christopherward.co.uk](mailto:technical@christopherward.co.uk)

## **WEBSITE**

[www.christopherward.co.uk](http://www.christopherward.co.uk)  
[www.christopherward.com](http://www.christopherward.com)  
[www.christopherward.eu](http://www.christopherward.eu)