

# C63 SH21 Snow Leopard

Owner's Handbook



## Time on your side

Your Christopher Ward watch has been designed in Britain and engineered in Switzerland by highly talented craftspeople. This ensures not only accurate and precise timekeeping, but also brings a real pride of ownership that only watches of the highest quality standards can hope to deliver.

You have made an investment, a good one, and the aim of this manual is to help you make the most of that investment in what we hope will be a lifetime of ownership.

Mike France  
CEO & co-founder



### C63 SH21 Snow Leopard Limited Edition

Congratulations on the purchase of your C63 SH21 Snow Leopard.

A watch that will not only give you years of pleasure but whose legacy will be a contribution to the survival and growth of the Central Asian snow leopard.

Five percent from the cost of your watch has been donated to the David Shepherd Wildlife Foundation, a charity that preserves the habitats of our most endangered species. Even better, by buying the watch we'll adopt a snow leopard on your behalf and support it for 12 months.

Of course, this is also an exceptional timepiece.

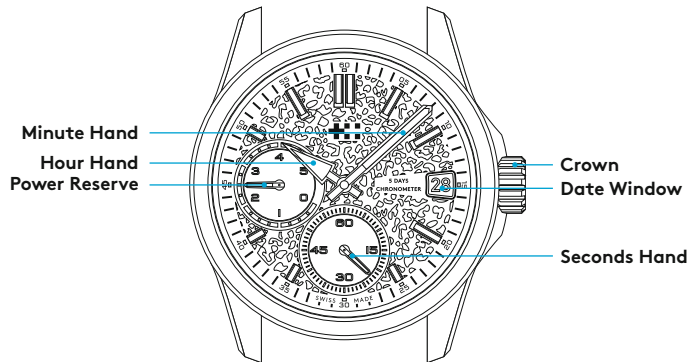
When it comes to movements, Calibre SH21 is up there with the best: thanks to its twin-barrel architecture, it boasts a five-day power reserve, which means you can take it off for five days and it'll still keep ticking. And because it's a chronometer, it's in the top six percent of Swiss-made watches for accuracy.

So wherever you take your C63 SH21 Snow Leopard (it's waterproof to 150m), you'll know that it's not just playing its part in the preservation of the snow leopard, but also making sure you're always on time.



## Display and controls

Your C63 SH21 Snow Leopard has a maximum power reserve of 120 hours when fully wound. To re-power the watch after a period of non-use, simply wind the crown for approximately 40 revolutions. Normal wearing will very quickly allow the rotor to start re-powering the watch over time after putting it on your wrist.



## Features

- Swiss made
- Limited edition of 150 pieces
- In-house 33 jewel Calibre SH21 automatic movement
- Chronometer (COSC) certified
- 120-hour power reserve
- Anti-shock system
- Hacking small seconds
- Date calendar
- Power reserve indicator
- Brushed and polished marine-grade stainless steel case
- Custom exhibition caseback with limited edition number
- Circular brushed and polished fixed steel bezel
- Embossed screw-down crown
- Anti-reflective sapphire crystal
- Stamped matte dial with unique pattern
- Top-brushed gun metal indexes with diamond polished facets
- Brushed and polished gun metal steel hands
- Super-LumiNova® Grade X1 BL C1-filled hands and indexes
- Eco-friendly luxury presentation case and owner's handbook

## Technical Information

Calibre	<b>SH21 Automatic Chronometer (COSC)</b>
Case	<b>Stainless steel</b>
Diameter	<b>41mm</b>
Height	<b>13.10mm</b>
Lug to lug	<b>48.20mm</b>
Weight	<b>80g</b>
Water resistance	<b>15 ATM (150 metres)</b>
Vibrations	<b>28,800 per hour (4Hz)</b>
Timing tolerance	<b>-4/+6 seconds per day</b>
Strap width	<b>22mm</b>

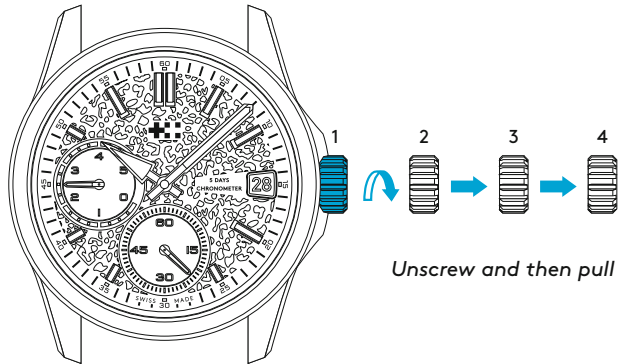




## Setting the time and date

For a superior water resistance your crown is of the screw-down type. The crown should sit flush to the case (position **1**) in order to maintain water resistance.

- First unscrew the crown anti-clockwise from the case to position **2** for winding in power. Wind in a clockwise direction to re-power the watch. Your C63 SH21 Snow Leopard has a maximum power reserve of 120 hours when fully wound.
- Pull gently into position **3**. For rapid date correction, turn in an anti-clockwise direction.
- Pull gently into position **4**. This position is used for handsetting and stopping of the seconds hand. For precise time setting it is recommended to pass beyond the desired minute and to set the hand backwards.



1. Crown screw-down position
2. Manual winding
3. Date setting
4. Time setting

**PLEASE NOTE:**

*Date correction should not be carried out between 20.00 hr and 02.00 hr as the watch gearing will already be aligning itself to change the date. The crown should always be pushed in after adjustment, and it is best to do so from position **3** to avoid advancing beyond the desired date. You must always ensure the crown is fully tightened before any use in water.*

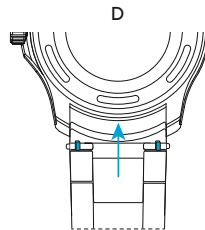
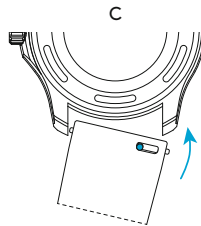
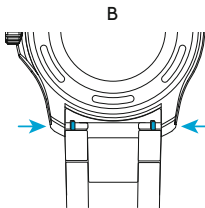
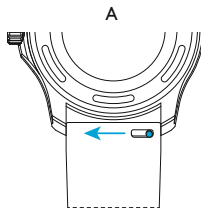
## Straps and bracelets

As you would expect, we place as much emphasis on the quality of our straps and bracelets as we do our watches. We only use the finest materials in our straps, with quick-release pins also included for your convenience.

The following guidelines explain how easy it is to use, adjust and replace your Christopher Ward strap or bracelet.

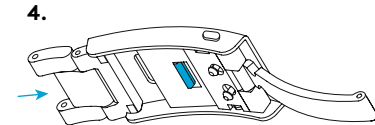
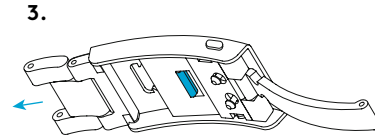
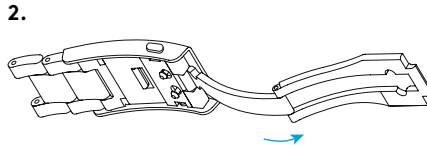
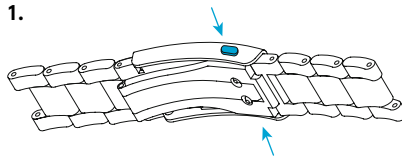
### Using the quick-release pins on your strap/bracelet

1. Locate the quick-release pin (or pins) on your strap (A) or bracelet (B). Pull the pin(s) inwards to detach.
2. To reattach your strap (C) or bracelet (D), pull the pin(s) inwards, and align the spring bars so that they click securely into the lug holes on each side.



## How to use the micro adjustment on your bracelet

1. Press buttons to release.
2. Pull open the clasp.
3. There are five micro adjustment positions, which allows for a maximum extension of 10mm. To extend, pull the lever to unlock and simultaneously pull on the bracelet into the desired position.
4. To shorten, simply pull the lever to unlock and push the bracelet back into the clasp.



## Water resistance

Although your watch has been through vigorous static pressure testing, it is worth remembering that there are many variables that can affect the water resistance of your watch. For instance, arm movements during swimming and the sudden impact of diving and water sports will drastically increase the pressure the watch is under.

Wearing your watch in the bath, shower, or sauna can also have an effect as a rapid increase in temperature can cause seals to expand and in extreme cases, malfunction or create condensation.

For these reasons, the water resistance rating of your watch (as shown) should only ever be considered a guideline and we strongly recommend they are always adhered to.



**1 ATM (10 metres)**

Safe to wear your watch while washing your hands with tap water



**15 ATM (150 metres)**

Safe to use while snorkelling in open water



**100 ATM (1000 metres)**

Professional deep sea diving



**3 ATM (30 metres)**

Washing your car and/or general hose pipe usage



**30 ATM (300 metres)**

Ideal for experienced divers and those practising scuba-diving



**5 ATM (50 metres)**

Water resistant to most household shower units



**60 ATM (600 metres)**

Professional divers, experiencing prolonged exposure underwater

## 60|60 Guarantee

Your watch is constructed from the finest components and powered by a Swiss mechanical movement. As with all quality watches, with the right care and attention, your new timepiece has the potential to become an heirloom, giving joy to future generations.

It's for this reason we've created an industry-leading approach to after-sales care, starting with our famous 60|60 Guarantee – the most comprehensive warranty in watchmaking.

### **60-day free returns**

We hope you'll be happy with your watch from the moment it arrives. However, if that's not the case you have 60 days to return it in perfect, unused condition (with all its accompanying paperwork) in order to receive a replacement or full refund.

### **60-month movement guarantee**

Your watch is powered by a precision-engineered Swiss movement. In the rare event that your movement develops a fault within five years we'll repair it for free under warranty. Your watch will need to be sent to us for a full diagnosis before processing a repair under warranty. We will always keep you informed before carrying out any work.

**Service and repairs: the Christopher Ward way**

Our approach to service and repairs is about uncompromised quality and great value for money. The process, led by our expert technicians, won't cost the earth and will have the watch back on your wrist in reasonable time. We recommend you service your watch every three to four years to keep it in peak condition.

**PLEASE NOTE:**

*The 60|60 Guarantee does not cover accidental damage. Any service or repair by a third-party retailer will void your 60|60 Guarantee. For more details, please visit our website.*



Contact us

## Keeping in touch with Christopher Ward

From humble beginnings in 2004 (our first workshop was a refurbished chicken shed!) Christopher Ward has won a global following – and can justifiably claim to make the most affordable luxury watches in the world.

For many of our fans, the philosophy of trying to put luxury watches within the reach of everyone, is as smart as the timepieces themselves. This open approach sees co-founders Mike France and

Peter Ellis communicate personally with customers and listen to their feedback. Something that helps us improve our offering to you. As the owner of a Christopher Ward watch, if you ever need to get hold of us we're at your service. And if you'd like to explore the CW world more, you can follow us on social media.



@ChristopherWardLondon



@ChrisWardLondon

#### **Head office**

1 Park Street, Maidenhead,  
Berkshire SL6 1SL  
United Kingdom

#### **Customer support**

UK and EU Tel: +44 (0)1628 763040  
US Tel: +1 (877) 380 2288  
ROW Tel: +1 (877) 380 2288  
[customerservices@christopherward.co.uk](mailto:customerservices@christopherward.co.uk)  
[technical@christopherward.co.uk](mailto:technical@christopherward.co.uk)

**[christopherward.com](http://christopherward.com)**

