

The C70 COSC Racing Series

O W N E R ' S H A N D B O O K

Time on your side...

Your Christopher Ward watch has been designed and engineered by highly talented craftspeople to ensure not only accurate and precise timekeeping but also to bring a real pride of ownership that only luxury items of the highest quality can ever hope to deliver.

You have made an investment, a good one, and the aim of this handbook is to help you make the most of that investment during what I hope will be a lifetime of ownership.

A handwritten signature in black ink, appearing to read 'Chris', written in a fluid, cursive style.

Christopher Ward



C70 DBR1 **COSC**

Caring for your Christopher Ward quartz watch

Your C70 COSC Racing Series Chronometer is constructed from the finest components and materials available including one of Switzerland's finest quartz movements.

As with all watches of this quality, with just a little care, it has the potential to become an heirloom piece giving further joy to future generations.

Here are a few hints to help keep your watch working perfectly over the years:

- Although the battery in your watch may last longer, we recommend you have it changed every 2/3 years by a reputable watch repairer.
- At the same time as having the battery changed it makes sense to have the watch repairer clean and lubricate your watch as necessary.
- Make sure the crown is screwed down fully before putting the watch into water. Adhere to the water resistance ratings towards the end of the handbook to prevent water getting to the movement which could result in a very costly repair or the need for a replacement movement.
- Your watch is shock resistant to minor impacts but dropping from height onto a hard surface may damage the movement.

Should you need a replacement part - don't worry, we keep stocks of spare parts for years, even for discontinued models. It's all part of the Christopher Ward service.

Finally, don't forget our **CW360° Care Programme** allows you to return your watch absolutely free, for any reason, and with no quibbles, for up to 60 days after purchase and we also guarantee your movement for up to 60 months, so long as it is regularly serviced. After all, why shouldn't you enjoy peace of mind as much as you enjoy your watch?

COSC Certification

COSC (*Contrôle Officiel Suisse des Chronomètres*) is the Official Swiss Chronometer Testing Institute responsible for certifying both the accuracy and precision of wristwatches in Switzerland.

Only movements which meet the precision criteria are granted an official certificate. Each uncased movement is individually tested for 15 days, in 5 positions, at 3 different temperatures. The movements are fitted with a seconds hand for tests and measurements are made daily with the aid of cameras. Based on all these measurements, 7 eliminatory criteria are calculated, each of which must be met.





The C70 COSC Racing Series

Features

27 jewel Swiss quartz movement

COSC (*Contrôle Officiel Suisse des Chronomètres*)
Certification

Multi-function chronograph

Date window

Convex sapphire crystal with ant-reflective coating

Water resistant to 10 atm

Adjustable quick-release butterfly clasp

Screw-in crown

Chronographic dials with split
minutes / seconds / 1/10 seconds

Tachymeter bezel and engraved backplate

Technical Data

Diameter: 42mm

Height: 10.7mm

Weight: 90g

Case: 316L Stainless steel

Calibre: ETA 251.232 COSC

Type: Chronometer

Description of the display and control buttons

Display elements

Minute Hand

Tenths

60 Minute Counter

Hour hand

Hours

60 Second Counter

Seconds

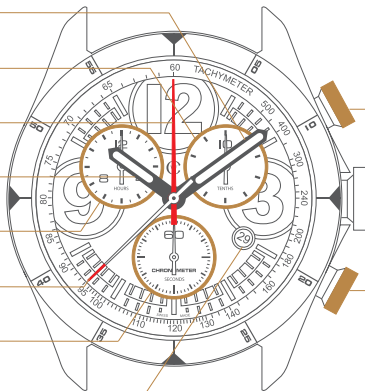
Date Window

Control buttons

Push-button A

Crown

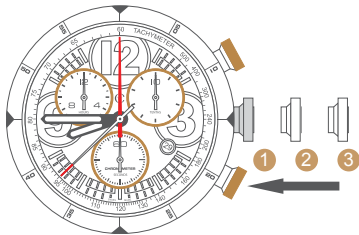
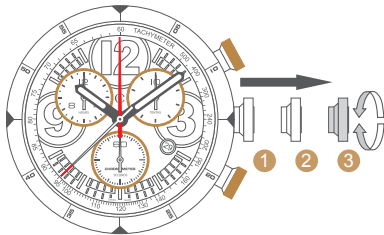
Push-button B



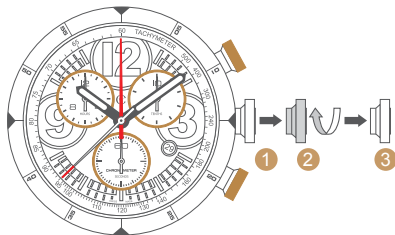
Setting the time

For a superior water resistance your crown is of the screw-in type. To get to position ① turn the crown anti-clockwise until it releases itself.

- Pull out the crown to position ③ (the watch stops).
- Turn the crown until you reach the correct time e.g. **08.45 hr.**
- Push the crown back into position ① and screw the crown in a clockwise direction in order to maintain water resistance. The crown should sit flush to the case.

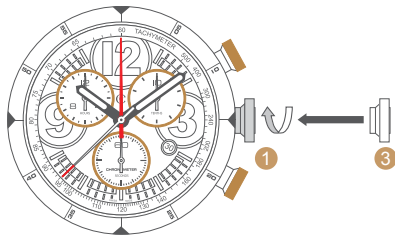


Setting the date (quick mode)



- Pull out the crown to position ② (the watch continues to run).
- Turn the crown clockwise until the correct date appears. The hour hand moves in one hour increments.
- Pull the crown to position ③

Push the crown back into position ① until flush with the case and screw in.



Please note:

The date can not be changed during the date changing phase between 21.00 hr and 02.00 hr as the watch gearing will already be aligning itself to change the date.

The crown should always be screwed in after adjustment, and it is best to do so from position 3 to avoid advancing beyond the desired date.

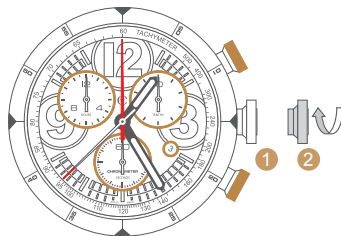
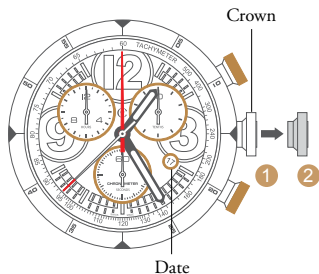
Setting the date/time

Example:

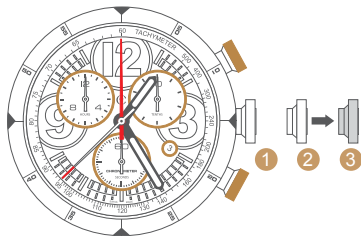
Date / time on the watch: **17th** / 01.25 hr

Present date / time: **4th** / 20.30 hr

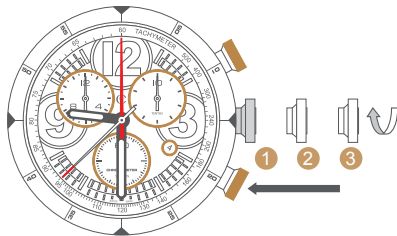
- Pull out the crown to position **2** (the watch continues to run).



- Turn the crown clockwise until yesterday's date appears ie. **3rd**.



- Pull out the crown to position **3** (the watch stops).



- Turn the crown clockwise until the correct date ie. **4th** appears (after passing through midnight).
- Continue to turn the crown until the correct time 21.30 hr appears.
- Push the crown back into position **1** until flush with the case and screw in.

Chronograph:

- The **hour counter** measures 12 hours per rotation.
- The **minute counter** measures 60 minutes per rotation.
- The **centre stop-second** measures 60 seconds per rotation.
- The **1/10 second counter** measures 1 second per rotation.

Display elements

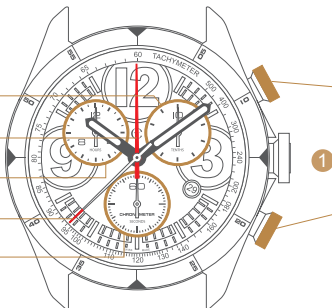
Tenths

60 Minute Counter

Hours

60 Second Counter

Seconds



Control buttons

Push-button A
(Start / Stop)

Push-button B
(Reset)

Please note:

Before using the chronograph functions, please ensure that:

- The crown is in **position ①** (screwed in).
- The 4 chronograph hands are at zero position. Should this not be the case, the positions of the hands must be adjusted (see the chapter entitled 'Adjusting the chronograph hands to zero position').

Chronograph: Basic function

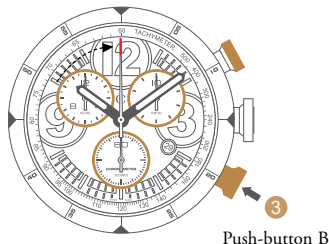
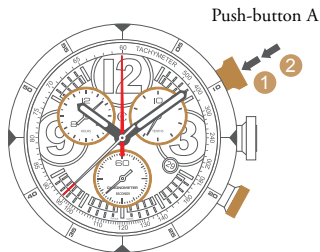
(Start / Stop / Reset)

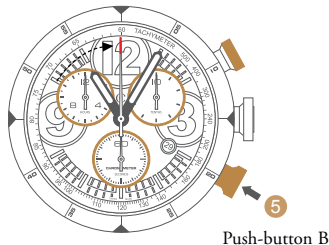
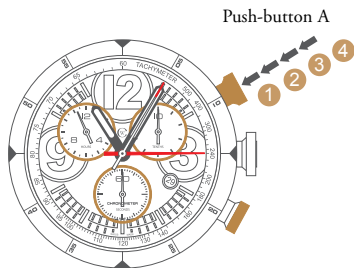
Example:

- 1 **Start:** Press push-button **A**.
- 2 **Stop:** to stop the timing, press push-button **A** once more and read the 4 chronograph counters:
- 3 **Zero positioning:** Press push-button **B**.
(The 3 chronograph hands will be reset to their zero positions).

Example of use:

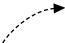
Timing a runner over 100m.





Chronograph: Accumulated timing

Example:

- 1 **Start:** (start timing).
- 2 **Stop:** (e.g. 15 min 5 sec following 1).
- 3 **Restart:** (timing is resumed).
- 4 **Stop:** (e.g. 13 min 5 sec following 3)
= 28 min 10 sec
(the accumulated measured time is shown)
- 5 **Reset:** 
The 4 chronograph hands are returned to their zero positions.
- 6 **Repeat:** as necessary.

Example of use:

Overall time to complete a journey less the coffee breaks.

Chronograph: Intermediate or interval timing

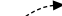
Example:

① **Start:** (start timing).

→ ② **Display interval:**
e.g. 10 minutes 10 seconds (timing continues in the background).

* ③ **Making up the measured time:**
(the 4 chronograph hands are quickly advanced to the ongoing measured time).

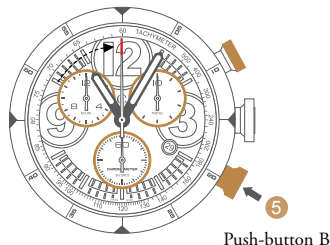
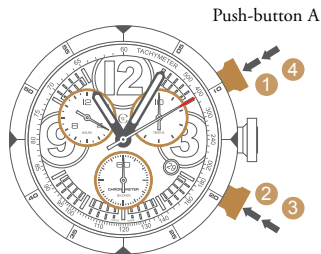
④* **Stop:** (final time is displayed).

⑤ **Reset:** 
The 3 chronograph hands are returned to their zero positions.

Please note:

* Following ③, further intervals or intermediates can be displayed by pressing **push-button B**.

Example of use: 4 x 100m relay.

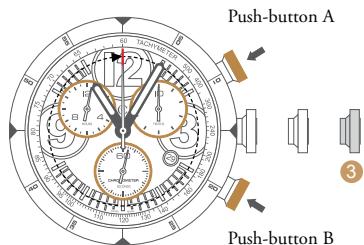
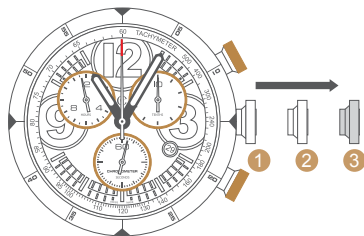


Adjusting the chronograph hands to zero position

Example:

One or several chronograph hands are not in their correct zero positions and have to be adjusted (e.g. following a battery change).

- Pull out the crown to position ② press **Button B** to reset the 30 minute counter to zero
- Pull out the crown to position ③. Push **Button A** to adjust the stop second hand and **Button B** to adjust the tenths seconds hand.



Fitting the bracelet

If you find the bracelet needs adjusting to your wrist we recommend you have it re-sized by a reputable watch repairer or jeweller. Most local jewellers will either do this for free or perhaps make a nominal charge for what is a job that should only take a few minutes. It is always best to be present so a comfortable fit is achieved.

Establishing the length of the bracelet

Place the watch with its separated bracelet on your wrist and estimate the number of links you need to remove. If you need to remove several links, try to keep the numbers removed from both halves of the bracelet as equal as possible to ensure that the clasp remains roughly in the middle of your wrist.



To open your bracelet simply press either side of the clasp to release as shown.

The quick-release butterfly clasp

The strap versions of the C70 COSC Racing Series use quick-release butterfly clasps. If you are unfamiliar with the butterfly clasp system just follow our 8 step guide below.



Step 1 Locate the clasp



Step 2 Click quick-release



Step 3 Pull open clasp



Step 4 Prise cover open



Step 5 Thread strap through



Step 6 Snap back



Step 7 Close clasp



Step 8 Complete

Water resistance

Please note. these are only guidelines but we strongly urge you to adhere to them to retain the integrity of your watch. If you have any queries regarding this please contact us direct.



1 ATM
(10 Metres)

Safe to wear your watch while washing your hands with tap water.



3 ATM
(30 Metres)

Washing your car and or general hosepipe usage.



5 ATM
(50 Metres)

Water resistant to most household shower units.



10 ATM
(100 Metres)

Safe to use while snorkelling in open water, it is not advisable to dive with your watch.



30 ATM
(300 Metres)

Ideal for experienced divers and, in general, anybody practising scuba-diving.



50 ATM
(500 Metres)

Professional divers, experienced prolonged exposure underwater.

NB. To safeguard watch movement please ensure the crown is, at all times, secured correctly.

Keeping in touch with Christopher Ward...

From small beginnings just a few short years ago (our first workshop was actually a refurbished chicken shed!), Christopher Ward has won a worldwide following for his eponymous watch brand and can justifiably claim to manufacture the most affordable luxury watches in the world.

For many, the philosophy behind the brand, trying to put luxury watches within the reach of everyone, is as attractive as the watches themselves as is the very open approach of the business which means that Chris and the team spend a lot of time communicating personally with our customers - many of whom have become friends.

As the owner of a Christopher Ward watch, if ever you need to get hold of us we are at your service. We have listed some useful contact details on the back cover.

There is also always something new going on at our website at **www.christopherward.co.uk** and, if you haven't already discovered the independent forum dedicated to our brand at **www.christopherwardforum.com** we would recommend a visit. Informative and fun, it's a great place to hear the unexpurgated view of Christopher Ward of London!